



Wisconsin Department of Transportation

November 30, 2022

Division of Transportation Systems Development

Bureau of Project Development
4822 Madison Yards Way, 4th Floor South
Madison, WI 53705

Telephone: (608) 266-1631
Facsimile (FAX): (608) 266-8459

NOTICE TO ALL CONTRACTORS:

Proposal #24: 9160-17-71, WISC 2023107
Pound – Marinette
USH 141 – CTH E
STH 64
Marinette County

9160-19-71, WISC 2023108
Pound – Marinette
CTH E – STH 180
STH 64
Marinette County

Letting of December 13, 2022

This is Addendum No. 01, which provides for the following:

Plan Sheets:

Added Plan Sheets – 9160-17-71	
Plan Sheet	Plan Sheet Title (brief description of why sheet was added)
17A	Plan Details (Culvert Detail for Station 123+63)
17B	Plan Details (Guardrail Detail at Little Peshtigo River)

The responsibility for notifying potential subcontractors and suppliers of these changes remains with the prime contractor.

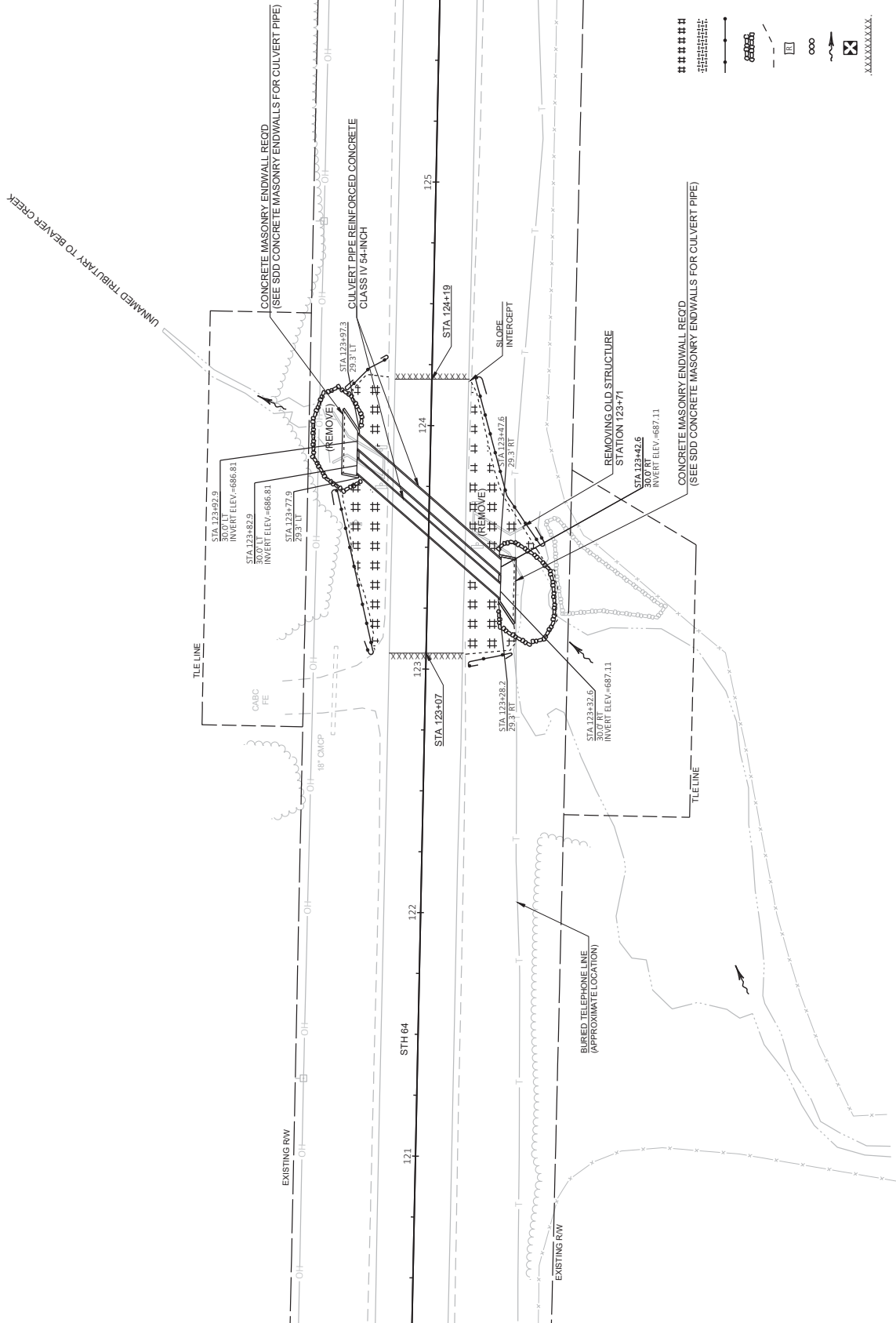
Sincerely,

Mike Coleman

Proposal Development Specialist
Proposal Management Section

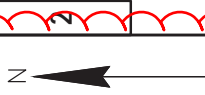
END OF ADDENDUM

Addendum No. 01
 ID 9160-17-71
 Added Sheet 17A
 November 30, 2022



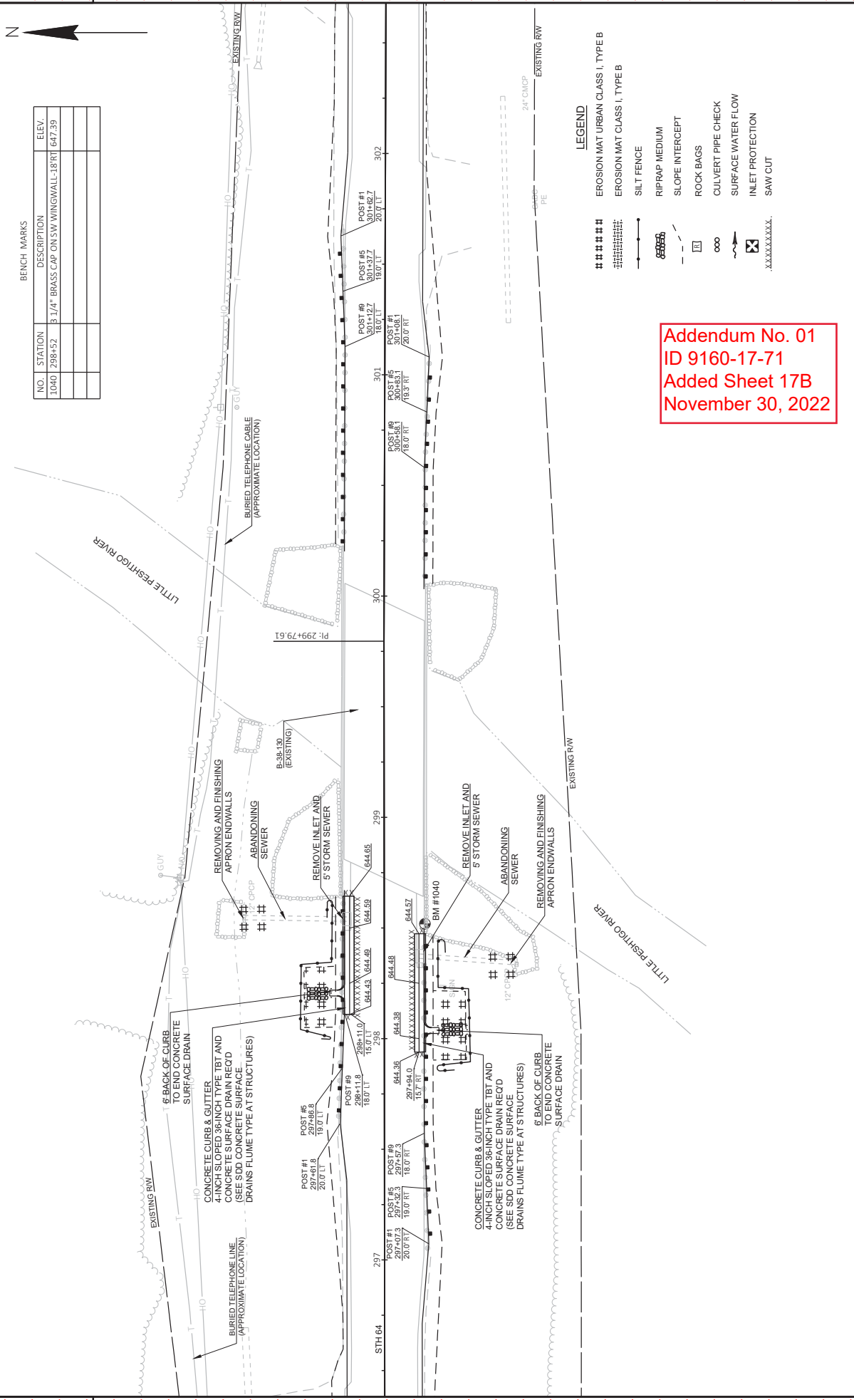
- LEGEND**
- #### EROSION MAT URBAN CLASS I, TYPE B
 - ##### EROSION MAT CLASS I, TYPE B
 - SILT FENCE
 - RIPRAP MEDIUM
 - SLOPE INTERCEPT
 - ROCK BAGS
 - CULVERT PIPE CHECK
 - SURFACE WATER FLOW
 - INLET PROTECTION
 - SAW CUT

PROJECT NO: 9160-17-71	COUNTY: MARINETTE	PLAN DETAIL - BOX CULVERT REPLACEMENT	SHEET 17A
FILE NAME: I:\MS04\0338\5164\MARINETTE\01\USH\41-CT\ENC38\REDESIGN\0214-POD\DWG	DATE: 11/29/2022 8:30 AM	FILE BY: VERLE PHEP	DATE: 11/29/2022 8:30 AM
PROJECT NO: 9160-17-71	COUNTY: MARINETTE	PLAN DETAIL - BOX CULVERT REPLACEMENT	SHEET 17A



BENCH MARKS

NO.	STATION	DESCRIPTION	ELEV.
1040	298+52	B 1/4" BRASS CAP ON SW WINGWALL-18RT	647.39



**Addendum No. 01
 ID 9160-17-71
 Added Sheet 17B
 November 30, 2022**

- LEGEND**
- ##### EROSION MAT URBAN CLASS I, TYPE B
 - ##### EROSION MAT CLASS I, TYPE B
 - SILT FENCE
 - ##### RIPRAP MEDIUM
 - SLOPE INTERCEPT
 - ##### ROCK BAGS
 - ##### CULVERT PIPE CHECK
 - ##### SURFACE WATER FLOW
 - ##### INLET PROTECTION
 - ##### SAW CUT

