



Wisconsin Department of Transportation

Division of Transportation Systems Development

Bureau of Project Development
4822 Madison Yards Way, 4th Floor South
Madison, WI 53705

January 9, 2023

Telephone: (608) 266-1631
Facsimile (FAX): (608) 266-8459

NOTICE TO ALL CONTRACTORS:

**Proposal #10: 6010-00-73, WISC 2023153
Arlington – Columbus
STH 22 to Commerce Drive
STH 60
Columbia County**

Letting of January 10, 2023

This is Addendum No. 02, which provides for the following:

Schedule of Items:

Revised Bid Item Quantities					
Bid Item	Item Description	Unit	Proposal Total Prior to Addendum	Proposal Quantity Change (-)	Proposal Total After Addendum
205.0100	Excavation Common	CY	31,936	-12,087	19,849
305.0110	Base Aggregate Dense 3/4-Inch	TON	19,894	-572	19,322
305.0120	Base Aggregate Dense 1 1/4-Inch	TON	29,811	-10,680	19,131
311.0110	Breaker Run	TON	32,282	-12,682	19,600
465.0105	Asphaltic Surface	TON	8,641	-3,077	5,564

Plan Sheets:

Revised Plan Sheets	
Plan Sheet	Plan Sheet Title (brief description of changes to sheet)
12	Construction Detail – Culvert Pipe Transition Detail “or Native” was removed from backfill material note in legend
106	Quantities for the following bid items changed: 205.0100 Excavation Common, 305.0110 Base Aggregate Dense 3/4-Inch, 305.0120 Base Aggregate Dense 1 1/4-Inch, 465.0105 Asphaltic Surface, and 3110.0110 Breaker Run

Schedule of Items

Attached, dated January 9, 2023, are the revised Schedule of Items Pages 1 – 3.

Plan Sheets

The following 8½ x 11-inch sheets are attached and made part of the plans for this proposal:

Revised: 12 and 106

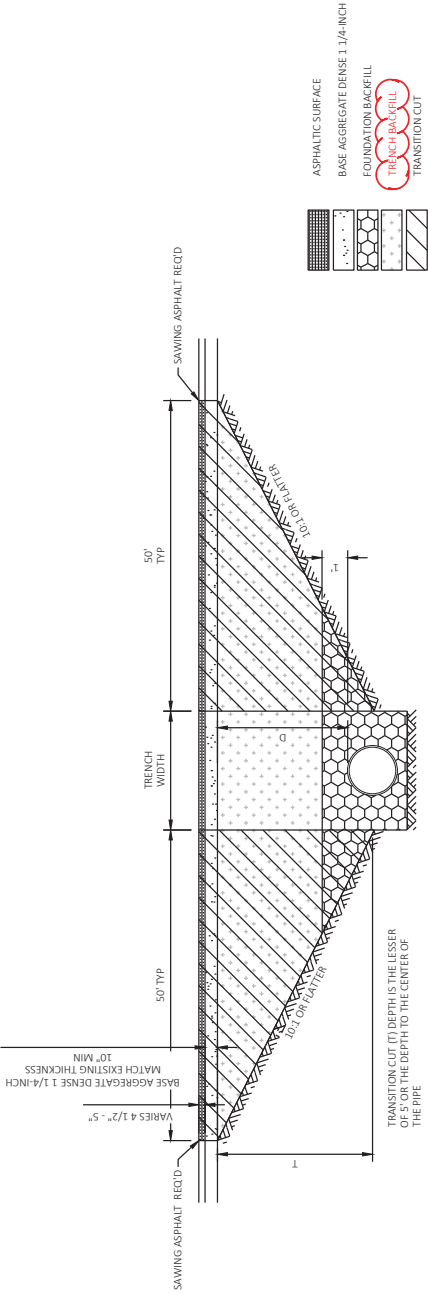
The responsibility for notifying potential subcontractors and suppliers of these changes remains with the prime contractor.

Sincerely,

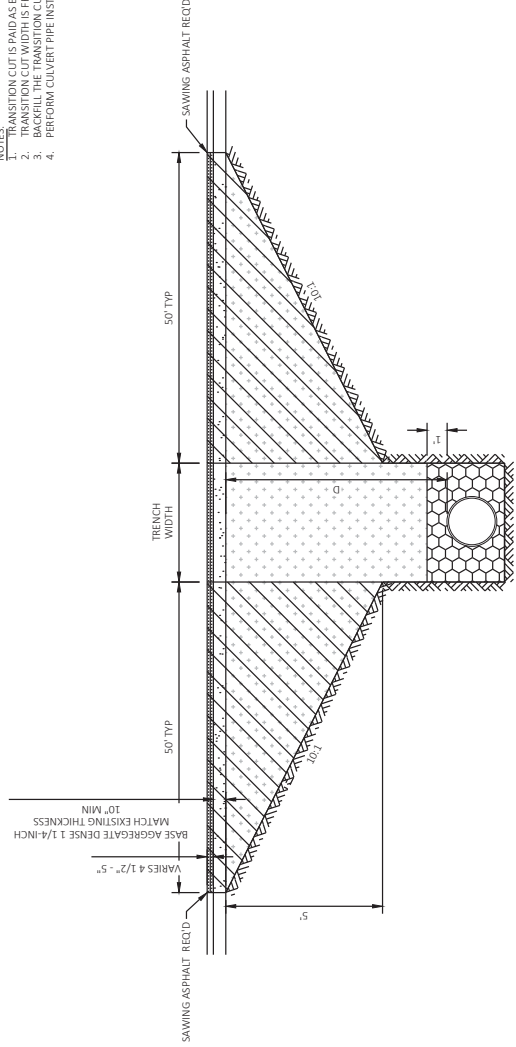
Mike Coleman

Proposal Development Specialist
Proposal Management Section

END OF ADDENDUM



- NOTES:
1. TRANSITION CUT IS BAND AS EXCAVATION COMMON.
 2. TRANSITION CUT WIDTH IS FROM SUBGRADE SHOULDER POINT TO SUBGRADE SHOULDER POINT
 3. BACKFILL THE TRANSITION CUT AREAS AS SPECIFIED IN STANDARD SPEC 520.
 4. PERFORM CULVERT PIPE INSTALLATION BEFORE MILLING AND PAVING OPERATIONS.



CULVERT PIPE TRANSITION DETAIL

Addendum No. 02
 ID 6010-00-73
 Revised Sheet 12
 Januar 9, 2023

Addendum No. 02
ID 6010-00-73
Revised Sheet 106
January 9, 2023

FATHWORK

DIVISION	STATION-START	LOCATION	205.0100 EXCAVATION COMMON (CY)		# SALVAGED/ UNUSABLE PAVEMENT MATERIAL (CY)	# AVAILABLE MATERIAL (2) CY	# UNEXPANDED FILL (CY)	# EXPANDED FILL (CY)	# MASS ORDINATE +/- (CY) (4)	# WASTE CY	208.0100 BORROW CY	208.0100 BORROW CY	# 305.0110 BASE AGGREGATE DENSE 3/4-INCH TON	# 305.0120 BASE AGGREGATE DENSE 1 1/4-INCH TON	# 465.0105 ASPHALTIC SURFACE TON	311.0110 BREAKER RUN TON
			CUT (1)	# CUT												
		HARVEY RD	-	-	-	0	12	13	-13	-	-	-	-	-	-	-
		KRONCKERD	-	-	-	0	12	13	-13	-	-	-	-	-	-	-
		BRADLEY RD	-	-	-	0	20	22	-22	-	-	-	-	-	-	-
		CTHC	-	-	-	0	23	25	-25	-	-	-	-	-	-	-
		OLD CTHF	-	-	-	0	19	21	-21	-	-	-	-	-	-	-
		MASEY RD	-	-	-	0	6	7	-7	-	-	-	-	-	-	-
		CTRN (SOUTH)	-	-	-	0	20	22	-22	-	-	-	-	-	-	-
		CTRN (NORTH)	-	-	-	0	15	17	-17	-	-	-	-	-	-	-
		PAIRPART RD	-	-	-	0	11	12	-12	-	-	-	-	-	-	-
		CTHA	-	-	-	0	3	29	-26	-	-	-	-	-	-	-
		WINDT RD	-	-	-	0	14	15	-15	-	-	-	-	-	-	-
		BOELTE RD	-	-	-	0	2	25	-23	-	-	-	-	-	-	-
		SCHAEFER RD	-	-	-	0	10	11	-11	-	-	-	-	-	-	-
		TRANSIT RD	-	-	-	0	7	8	-8	-	-	-	-	-	-	-
		SUBTOTAL	-	-	-	5	220	243	-238	-	-	-	-	-	-	-
		114+55-118+06	-	-	-	0	12	13	-13	-	13	-	-	-	-	-
		140+82-143+02	-	-	-	0	9	10	-10	-	-	-	-	-	-	-
		507+29-509+77	-	-	-	0	8	9	-9	-	9	-	-	-	-	-
		682+53-684+74	-	-	-	0	8	9	-9	-	-	-	-	-	-	-
		736+44-739+83	-	-	-	0	12	13	-13	-	13	-	-	-	-	-
		775+11-776+49	-	-	-	0	5	6	-6	-	6	-	-	-	-	-
		SUBTOTAL	-	-	-	-	54	60	-60	-	60	-	-	-	-	-
		81+57	99	-	-	99	99	109	-10	0	10	-	-	-	-	-
		83+07	120	-	-	120	120	132	-12	0	12	-	-	-	-	-
		128+57	120	-	-	120	130	132	-12	0	12	-	-	-	-	-
		168+00	120	-	-	120	120	132	-12	0	12	-	-	-	-	-
		198+00	120	-	-	120	120	132	-12	0	12	-	-	-	-	-
		306+26	124	-	-	124	124	136	-12	0	12	-	-	-	-	-
		687+38	465	-	-	465	465	512	-47	0	47	-	-	-	-	-
		SUBTOTAL	1,168	-	-	1,168	1,168	1,285	-117	-	117	-	-	-	-	-
		562+60-576+80	4,813	-	-	4,813	-	-	-	4,813	-	-	228	4,252	1,225	5,050
		656+00-669+20	4,474	-	-	4,474	-	-	-	4,474	-	-	212	3,573	1,139	4,694
		682+40-710+12	9,394	-	-	9,394	-	-	-	9,394	-	-	444	8,301	2,391	9,856
		SUBTOTAL	18,681	-	-	18,681	-	-	-	18,681	-	-	884	16,126	4,755	19,600
		SUBTOTALS	19,849	5	0	19,854	1,442	1,588	-415	18,681	177	238	884	16,126	4,755	19,600
		TOTAL 0010	19,849	5	0	19,854	1,442	1,588	-415	18,681	177	238	884	16,126	4,755	19,600

NOTES:
 # NOT A BID ITEM. FOR INFORMATION ONLY.
 ## FOR INFORMATION ONLY. QUANTITY TO BE USED WITH ITEM 205.016 S GRADING SHAPING AND FINISHING INTERSECTION.
 ### ADDITIONAL QUANTITIES SHOWN IN FSW HERE. SEE "AGGREGATE" AND "ASPHALT" TABLES.
 @ PIPE TRENCH EXCAVATION IS INCIDENTAL TO THE PIPE ITEMS.
 @ AVAILABLE MATERIAL - CUT - SALVAGED/UNUSABLE PAVEMENT MATERIAL
 @ EXPANDED FILL +/- UNEXPANDED FILL X EXPANSION FACTOR
 @ MASS ORDINATE +/- AVAILABLE MATERIAL - EXPANDED FILL: THE MASS ORDINATE +/- OR - QUANTITY CALCULATED FOR THE ROADWAY SEGMENT. "PLUS" INDICATES AN EXCESS OF MATERIAL WITHIN THE ROADWAY SEGMENT. "MINUS" INDICATES A SHORTAGE OF MATERIAL WITHIN THE ROADWAY SEGMENT. MATERIAL IS AVAILABLE FROM OTHER ROADWAY SEGMENTS.



Proposal Schedule of Items

Proposal ID: 20230110010 Project(s): 6010-00-73

Federal ID(s): WISC 2023153

SECTION: 0001 Contract Items

Alt Set ID: Alt Mbr ID:

Proposal Line Number	Item ID Description	Approximate Quantity and Units	Unit Price	Bid Amount
0002	203.0100 Removing Small Pipe Culverts	6.000 EACH	_____.	_____.
0004	204.0110 Removing Asphaltic Surface	1,773.000 SY	_____.	_____.
0006	204.0115 Removing Asphaltic Surface Butt Joints	2,112.000 SY	_____.	_____.
0008	204.0120 Removing Asphaltic Surface Milling	257,207.000 SY	_____.	_____.
0010	204.0150 Removing Curb & Gutter	4,878.000 LF	_____.	_____.
0012	204.0165 Removing Guardrail	1,343.000 LF	_____.	_____.
0014	204.0185 Removing Masonry	11.000 CY	_____.	_____.
0016	204.9060.S Removing (item description) 01. Apron Endwalls	2.000 EACH	_____.	_____.
0018	205.0100 Excavation Common	19,849.000 CY	_____.	_____.
0020	205.9016.S Grading Shaping and Finishing Intersection (location) 01. Harvey Rd	1.000 EACH	_____.	_____.
0022	205.9016.S Grading Shaping and Finishing Intersection (location) 02. Kroncke Rd	1.000 EACH	_____.	_____.
0024	205.9016.S Grading Shaping and Finishing Intersection (location) 03. Bradley Rd	1.000 EACH	_____.	_____.
0026	205.9016.S Grading Shaping and Finishing Intersection (location) 04. CTH C	1.000 EACH	_____.	_____.
0028	205.9016.S Grading Shaping and Finishing Intersection (location) 05. Old CTH F	1.000 EACH	_____.	_____.
0030	205.9016.S Grading Shaping and Finishing Intersection (location) 06. Hasey Rd	1.000 EACH	_____.	_____.



Proposal Schedule of Items

Proposal ID: 20230110010 Project(s): 6010-00-73

Federal ID(s): WISC 2023153

SECTION: 0001 Contract Items

Alt Set ID: Alt Mbr ID:

Proposal Line Number	Item ID Description	Approximate Quantity and Units	Unit Price	Bid Amount
0032	205.9016.S Grading Shaping and Finishing Intersection (location) 07. CTH N (South)	1.000 EACH	_____.	_____.
0034	205.9016.S Grading Shaping and Finishing Intersection (location) 08. CTH N (North)	1.000 EACH	_____.	_____.
0036	205.9016.S Grading Shaping and Finishing Intersection (location) 09. Parpart Rd	1.000 EACH	_____.	_____.
0038	205.9016.S Grading Shaping and Finishing Intersection (location) 10. CTH A	1.000 EACH	_____.	_____.
0040	205.9016.S Grading Shaping and Finishing Intersection (location) 11. Wendt Rd	1.000 EACH	_____.	_____.
0042	205.9016.S Grading Shaping and Finishing Intersection (location) 12. Boelte Rd	1.000 EACH	_____.	_____.
0044	205.9016.S Grading Shaping and Finishing Intersection (location) 13. Schaefer Rd	1.000 EACH	_____.	_____.
0046	205.9016.S Grading Shaping and Finishing Intersection (location) 14. Transit Dr	1.000 EACH	_____.	_____.
0048	208.0100 Borrow	177.000 CY	_____.	_____.
0050	211.0400 Prepare Foundation for Asphaltic Shoulders	1,540.000 STA	_____.	_____.
0052	211.0700.S Prepare Foundation for CIR Base Layer (project) 01. 6010-00-73	1.000 EACH	_____.	_____.
0054	211.0800.S Base Repair for CIR Layer	8,590.000 CY	_____.	_____.
0056	213.0100 Finishing Roadway (project) 01. 6010-00-73	1.000 EACH	_____.	_____.
0058	305.0110 Base Aggregate Dense 3/4-Inch	19,322.000 TON	_____.	_____.



Proposal Schedule of Items

Proposal ID: 20230110010 Project(s): 6010-00-73

Federal ID(s): WISC 2023153

SECTION: 0001 Contract Items

Alt Set ID: Alt Mbr ID:

Proposal Line Number	Item ID Description	Approximate Quantity and Units	Unit Price	Bid Amount
0060	305.0120 Base Aggregate Dense 1 1/4-Inch	19,131.000 TON	_____.	_____.
0062	305.0500 Shaping Shoulders	1,446.000 STA	_____.	_____.
0064	311.0110 Breaker Run	19,600.000 TON	_____.	_____.
0066	327.1000.S CIR Asphaltic Base Layer	256,144.000 SY	_____.	_____.
0068	330.0100 Mill and Relay	14,585.000 SY	_____.	_____.
0070	455.0605 Tack Coat	36,693.000 GAL	_____.	_____.
0072	455.0770.S Asphalt Stabilizing Agent	1,179.000 TON	_____.	_____.
0074	460.0105.S HMA Percent Within Limits (PWL) Test Strip Volumetrics	1.000 EACH	_____.	_____.
0076	460.0110.S HMA Percent Within Limits (PWL) Test Strip Density	2.000 EACH	_____.	_____.
0078	460.2000 Incentive Density HMA Pavement	13,780.000 DOL	1.00000	13,780.00
0080	460.2005 Incentive Density PWL HMA Pavement	44,140.000 DOL	1.00000	44,140.00
0082	460.2007 Incentive Density HMA Pavement Longitudinal Joints	38,430.000 DOL	1.00000	38,430.00
0084	460.2010 Incentive Air Voids HMA Pavement	65,656.000 DOL	1.00000	65,656.00
0086	460.6224 HMA Pavement 4 MT 58-28 S	65,656.000 TON	_____.	_____.
0088	465.0105 Asphaltic Surface	5,564.000 TON	_____.	_____.
0090	465.0120 Asphaltic Surface Driveways and Field Entrances	195.000 TON	_____.	_____.

