



Wisconsin Department of Transportation

Division of Transportation Systems Development

Bureau of Project Development
4822 Madison Yards Way, 4th Floor South
Madison, WI 53705

December 20, 2022

Telephone: (608) 266-1631
Facsimile (FAX): (608) 266-8459

NOTICE TO ALL CONTRACTORS:

Proposal #43: 1228-22-74, WISC 2023175
IH43 North-South Freeway
Hampton Ave.-SB Ramp over Milw Rvr
IH-43
Milwaukee County

Letting of January 10, 2023

This is Addendum No. 1, which provides for the following:

Special Provisions:

Revised Special Provisions	
Article No.	Description
3	Prosecution and Progress
20	Traffic Meetings and Traffic Control Scheduling
71	Management of Contaminated Soil and Contaminated Sediment, Item SPV.0165.0001

Schedule of Items:

Revised Bid Item Quantities					
Bid Item	Item Description	Unit	Proposal Total Prior to Addendum	Proposal Quantity Change (-)	Proposal Total After Addendum
201.0105	Clearing	STA	6	5	11
201.0205	Grubbing	STA	6	5	11
305.0120	Base Aggregate Dense 1 1/4 Inch	TON	1,753	-70	1,683
310.0110	Base Aggregate Open Graded	TON	19	40	59
312.0110	Select Crushed Material	TON	1,600	-110	1,490
520.8000	Concrete Collars for Pipe	EACH	4	-3	1
608.0312	Storm Sewer Pipe Reinforced Concrete Class III 12-Inch	LF	46	12	58
611.0639	Inlet Covers Type H-S	EACH	1	1	2
611.8115	Adjusting Inlet Covers	EACH	2	1	3
630.0170	Seeding Mixture No. 70	LB	236	2	238
632.9101	Landscape Planting Surveillance and Care Cycles	EACH	10	10	20
634.0618	Posts Wood 4x6-Inch x 18 FT	EACH	11	2	13

637.2215	Signs Type II Reflective H Folding	SF	32.38	10	42.38
638.2602	Removing Signs Type II	EACH	17	1	18
638.3000	Removing Small Sign Supports	EACH	11	2	13
653.0905	Removing Pull Boxes	EACH	2	1	3
SPV.0060.8004	Pipe Connection to Existing Structure	EACH	3	1	4

Added Bid Item Quantities					
Bid Item	Item Description	Unit	Proposal Total Prior to Addendum	Quantity Added	Proposal Total After Addendum
611.0430	Reconstructing Inlets	EACH	0	2	2

Plan Sheets:

Revised Plan Sheets	
Plan Sheet	Plan Sheet Title (brief description of changes to sheet)
9	Typical Sections; Changed base material above moment slab from Base Aggregate Dense 1 1/4-Inch to Base Aggregate Open-Graded.
21	Removals; Additional clearing & grubbing for existing fence removal.
24	Plan Details; STA/OFF callouts added to MGS and EAT.
47	Storm Sewer Details; Modified notes referring to standard spec book.
48-49	Storm Sewer Plan & Profile; Added an inlet and pipe, and changed an inlet replacement to a reconstruct.
52	Permanent Signing; Additional existing sign removal and replacement.
55	Lighting Plans; Additional pullbox removal.
93	Miscellaneous Quantities - Roadway; Additional clearing & grubbing for existing fence removal.
95	Miscellaneous Quantities - Roadway; Changed base material above moment slab from Base Aggregate Dense 1 1/4-Inch to Base Aggregate Open-Graded.
103-104	Miscellaneous Quantities - Drainage; Updated drainage quantities.
105	Miscellaneous Quantities - Landscaping; Increased quantity of surveillance and care cycles.
108	Miscellaneous Quantities - Lighting; Additional lighting pullbox removal.
110	Miscellaneous Quantities - Signing; Additional existing sign removal and replacement.

The responsibility for notifying potential subcontractors and suppliers of these changes remains with the prime contractor.

Sincerely,

Mike Coleman

Proposal Development Specialist
Proposal Management Section

ADDENDUM NO. 01

1228-22-74

December 20, 2022

Special Provisions

3. Prosecution and Progress

Replace paragraph one under section titled Interim Completion and Liquidated Damages – Causeway: August 14, 2023 with the following:

All activities in which the causeway is necessary for construction shall be completed by August 14, 2023.

*Add the following to the section titled **Work Zone Ingress/Egress**:*

Access into the work zones from the freeway will be allowed at other times and require lane and shoulder closures, subject to the approval by the engineer. Exiting work zones directly onto the freeway is not allowed during Peak and Off-Peak Hours. Exiting work zones directly onto the freeway will be allowed at other times and require lane and shoulder closures, subject to the approval by the engineer.

20. Traffic Meetings and Traffic Control Scheduling.

Replace entire article language with the following:

Every Thursday by 9:00 AM, submit a detailed proposed 2-week look-ahead traffic closure schedule to the engineer. Type the detailed proposed 2-week look-ahead closure schedule into an Excel spreadsheet provided by the engineer. Enter information such as closure dates, duration, work causing the closure and detours to be used. Also enter information such as ongoing long-term closures, emergency contacts and general 2-month look-ahead closure information into the excel spreadsheet.

Meet with the engineer at 10:00 AM on Thursdays at the project field office to discuss and answer questions on the proposed schedule. Edit, delete and add closures to the detailed proposed 2-week look-ahead schedule, as directed by the engineer, so that proposed closures meet specification requirements. Other edits, deletions or additions unrelated to meeting specification requirements may also be agreed upon with the engineer during the 10:00 AM meeting.

Every Thursday at 2:00 PM, or as scheduled by the engineer, attend a weekly traffic meeting. The meeting will bring local agencies, project stakeholders, owner managers, owner engineers, contractors, document control and construction engineering personnel together to discuss traffic staging, closures and general impacts. Upon obtaining feedback from the meeting attendees, edit, delete and add information to the detailed 2-week look-ahead closure schedule, as needed. Submit the revised 2-week look-ahead to the engineer.

Obtain approval from the engineer for any mid-week changes to the closure schedule. Revise the 2-week look-ahead as required and obtain engineer approval.

71. Management of Contaminated Sediment, Item SPV.0195.0001.

Replace paragraph two under section titled A.2 Notice to the Contractor-Solid Waste Location with the following:

Contaminated Sediment:

- Station 978HAB+50 to 980HAB+75, from construction limits left to construction limits right. Depths of contamination range from the sediment surface to bedrock (0-2' below the sediment surface). The estimated volume of PAH-, PCB-, and metal-contaminated sediment to be excavated at this location is 126 cubic yards (approximately 170 tons).

Schedule of Items

Attached, dated December 20, 2022, are the revised Schedule of Items Pages 1 – 15.

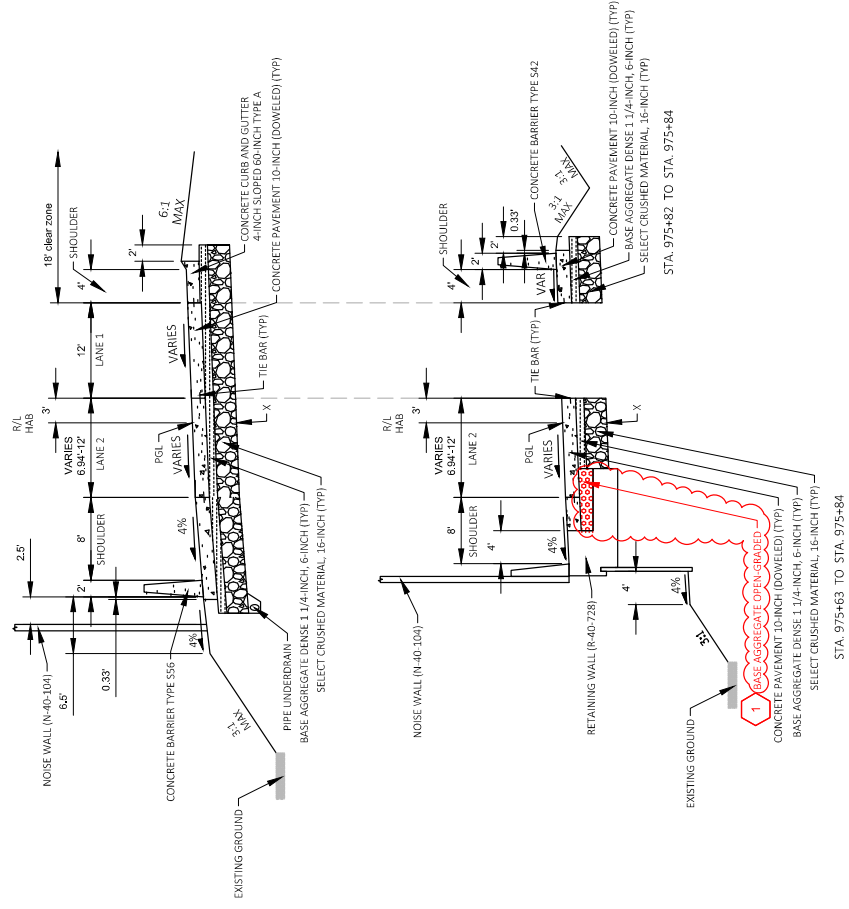
Plan Sheets

The following 8½ x 11-inch sheets are attached and made part of the plans for this proposal:

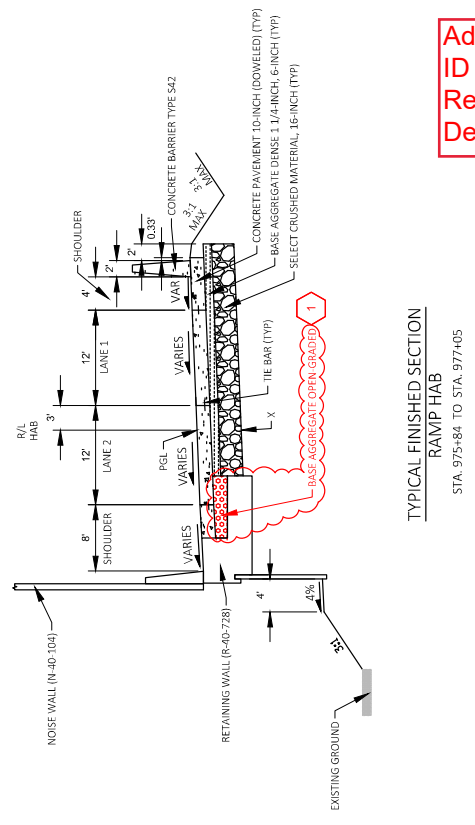
Revised: 9, 21, 24, 47, 48-49, 52, 55, 93, 95, 103-104, 105, 108 and 110.

END OF ADDENDUM

Addendum No. 01
ID 228-22-74
Revised Sheet 9
December 20, 2023



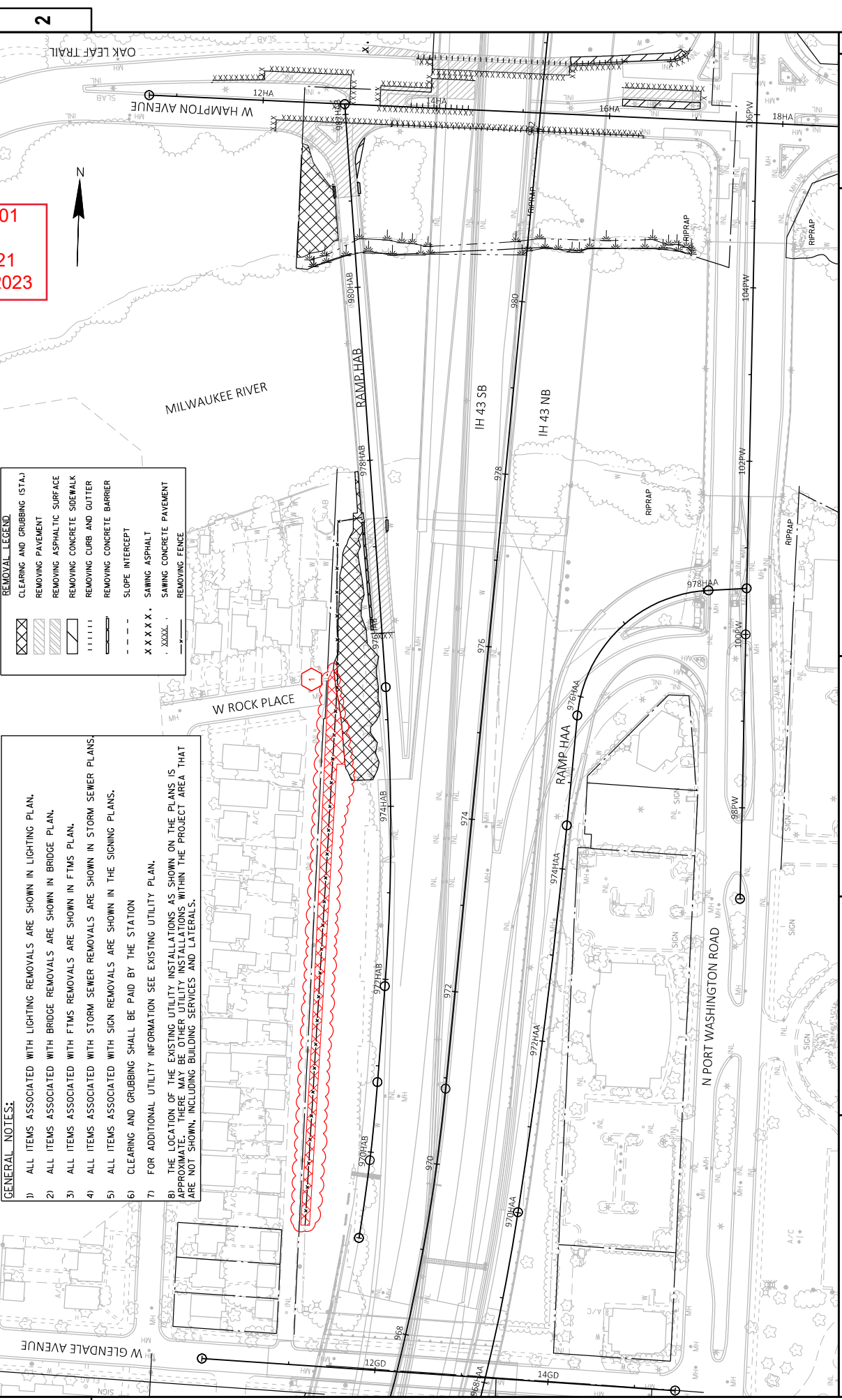
TYPICAL FINISHED SECTION
RAMP HAB
 STA. 974+31 TO STA. 975+84



TYPICAL FINISHED SECTION
RAMP HAB
 STA. 975+84 TO STA. 977+05

NOTES:
 X = POINT REFERRED TO ON CROSS-SECTION
 PGL = POINT REFERRED TO ON PROFILE AND
 PIVOT POINT FOR SUPERELEVATIONS

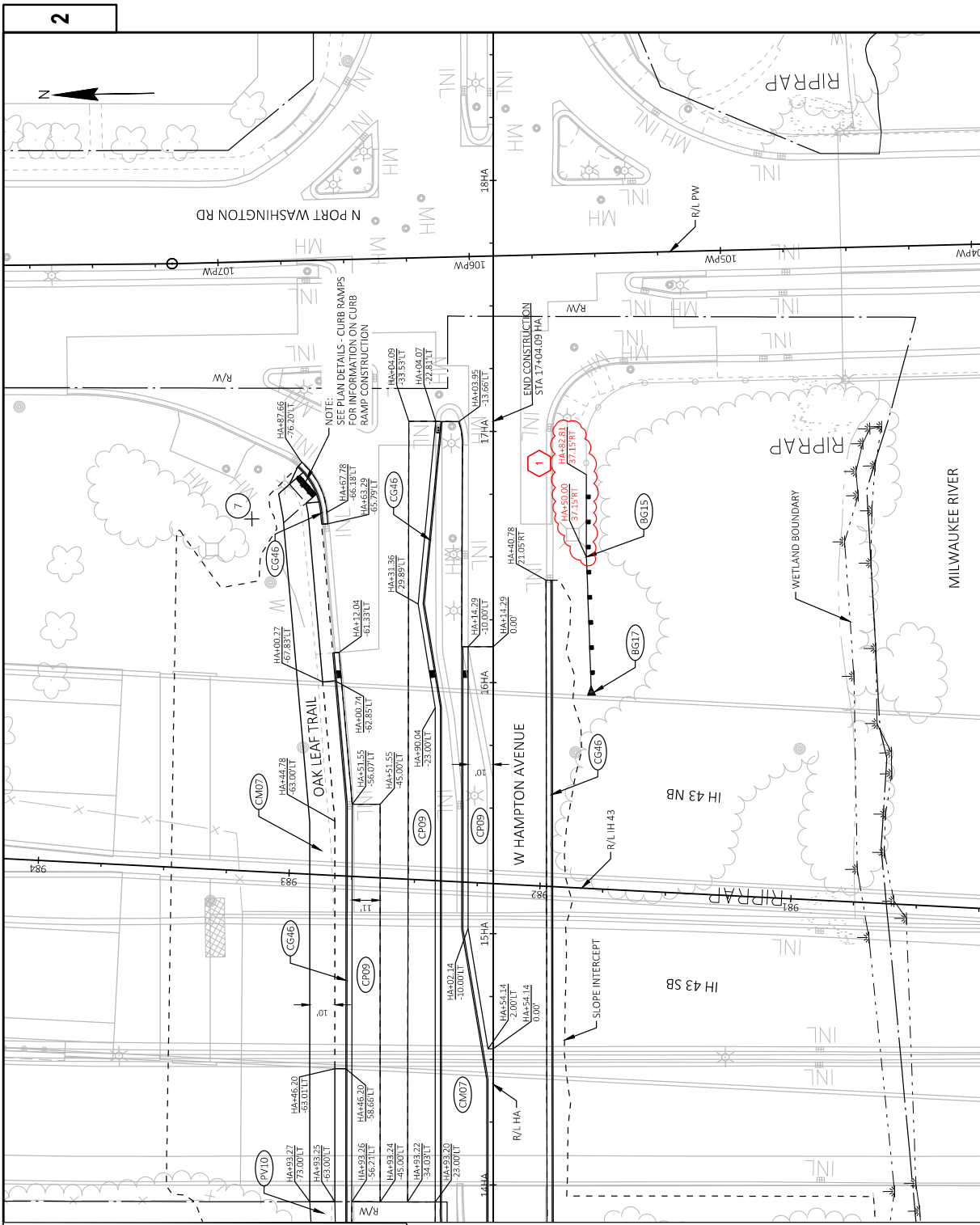
Addendum No. 01
 ID 228-22-74
 Revised Sheet 21
 December 20, 2023



REMOVAL LEGEND

	CLEARING AND GRUBBING (STA.)
	REMOVING PAVEMENT
	REMOVING ASPHALTIC SURFACE
	REMOVING CONCRETE SIDEWALK
	REMOVING CURB AND GUTTER
	REMOVING CONCRETE BARRIER
	SLOPE INTERCEPT
	SAWING ASPHALT
	SAWING CONCRETE PAVEMENT
	REMOVING FENCE

- GENERAL NOTES:**
- 1) ALL ITEMS ASSOCIATED WITH LIGHTING REMOVALS ARE SHOWN IN LIGHTING PLAN.
 - 2) ALL ITEMS ASSOCIATED WITH BRIDGE REMOVALS ARE SHOWN IN BRIDGE PLAN.
 - 3) ALL ITEMS ASSOCIATED WITH FIMS REMOVALS ARE SHOWN IN FIMS PLAN.
 - 4) ALL ITEMS ASSOCIATED WITH STORM SEWER REMOVALS ARE SHOWN IN STORM SEWER PLANS.
 - 5) ALL ITEMS ASSOCIATED WITH SIGN REMOVALS ARE SHOWN IN THE SIGNING PLANS.
 - 6) CLEARING AND GRUBBING SHALL BE PAID BY THE STATION.
 - 7) FOR ADDITIONAL UTILITY INFORMATION SEE EXISTING UTILITY PLAN.
 - 8) THE LOCATION OF THE EXISTING UTILITY INSTALLATIONS AS SHOWN ON THE PLANS IS APPROXIMATE. THERE MAY BE OTHER UTILITY INSTALLATIONS WITHIN THE PROJECT AREA THAT ARE NOT SHOWN, INCLUDING BUILDING SERVICES AND LATERALS.



- LEGEND:**
- (CP09) CONCRETE PAVEMENT 9-INCH, DOWELED AND TINED
 - (CP13) CONCRETE PAVEMENT 10-INCH, DOWELED AND TINED
 - (PVD) CONCRETE PAVEMENT APPROACH SLAB
 - (PVD) ASPHALTIC SURFACE, 3-INCH
 - (CG33) CONCRETE CURB AND GUTTER 4-INCH SLOPED 60-INCH TYPE A
 - (CG46) CONCRETE CURB AND GUTTER 30-INCH TYPE A
 - (CG55) CONCRETE CURB AND GUTTER 54-INCH TYPE A
 - (CM01) CONCRETE MEDIAN SLOPED NOSE TYPE 1
 - (CM02) CONCRETE MEDIAN SLOPED NOSE TYPE 2
 - (CM07) CONCRETE SIDEWALK 5-INCH
 - (CM08) CONCRETE SIDEWALK 6-INCH
 - (CB02) CONCRETE BARRIER TYPE S42
 - (CB03) CONCRETE BARRIER TYPE S56
 - (CB04) CONCRETE BARRIER TYPE S42B
 - (BG5) MGS GUARDRAIL 3
 - (BG7) MGS GUARDRAIL TERMINAL EAT
- NOTES:**
1. CURB AND GUTTER RADII AND ANGLE POINT OFFSETS ARE MEASURED TO FLANGE LINE, UNLESS OTHERWISE NOTED.

MATCHLINE 13+85HA

RADIUS TABLE		
POINT	STATION	RADIUS
7	16+85.18 HA	96.06' LT
		30'

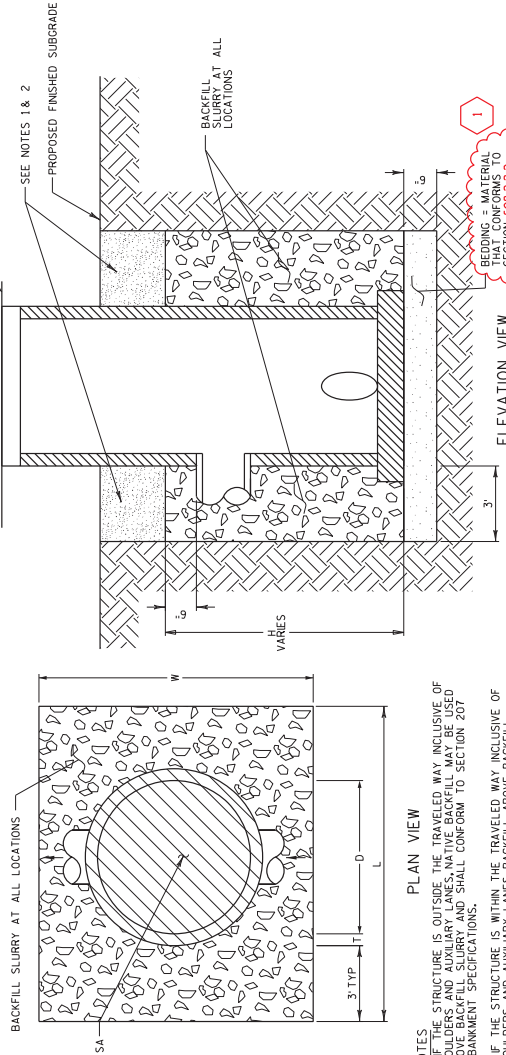
Addendum No. 01
ID 228-22-74
Revised Sheet 24
December 20, 2023

BACKFILL SLURRY STRUCTURES

DIAMETER / RECTANGULAR STRUCTURE WIDTH	THICKNESS	SIAB THICKNESS	STRUCTURE LENGTH	STRUCTURE EXCAVATION WIDTH	STRUCTURE EXCAVATION AREA	STRUCTURE AREA	BACKFILL SLURRY AREA
D	T	ST	L	W	SA	SB	SC
FT	INCH	INCH	FT	FT	SF	SF	S ²
2	5	5	8.83	9.25	82.41	9.11	7300
4	5	5	10.00	10.00	117.96	20.00	9400
NICTS-4-TT							

H = UP TO 6" ABOVE THE TOP OF THE HIGHEST PIPE IN THE STRUCTURE
 BACKFILL SLURRY VOLUME (CUBIC YARDS) = (PIPE AREA) X PIPE PLAN LENGTH

27



PLAN VIEW

NOTES
 (1) IF THE STRUCTURE IS OUTSIDE THE TRAVELED WAY INCLUSIVE OF SHOULDERS AND AUXILIARY LANES, NATIVE BACKFILL MAY BE USED ABOVE BACKFILL SLURRY AND SHALL CONFORM TO SECTION 207 EMBANKMENT SPECIFICATIONS.
 (2) IF THE STRUCTURE IS WITHIN THE TRAVELED WAY INCLUSIVE OF SHOULDERS AND AUXILIARY LANES, BACKFILL ABOVE BACKFILL SLURRY SHALL CONFORM TO SECTION 209.
 (3) BACKFILL SLURRY IS CONSIDERED INCIDENTAL TO DRAINAGE STRUCTURES. NO SEPARATE PAYMENTS WILL BE MADE.
 (4) WHEN TEMPORARY SUBGRADE IS HIGHER THAN PROPOSED FINISHED SUBGRADE, PROVIDE GRANULAR BACKFILL AT LOCATIONS. COST FOR GRANULAR BACKFILL IS CONSIDERED INCIDENTAL TO CONSTRUCTION.
 (5) AT DIRECTION OF ENGINEER, BACKFILL SLURRY CAN BE ELIMINATED IN HIGH EMBANKMENT AREAS.

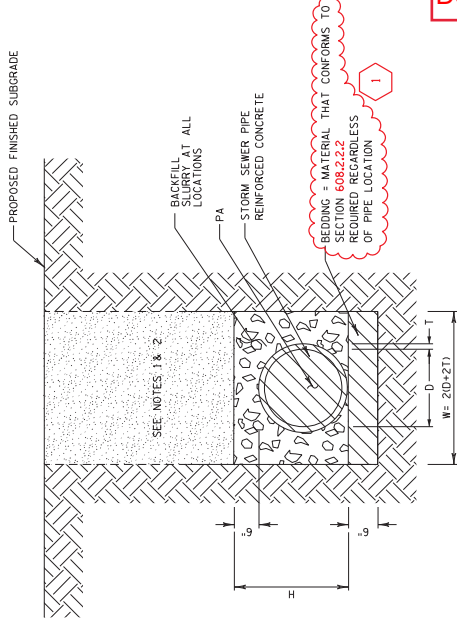
1
 BEDDING = MATERIAL TO SECTION 608.2.2.2 REQUIRED REGARDLESS OF STRUCTURE LOCATION.

BACKFILL SLURRY TRENCHES (FOR INFORMATION ONLY)

PIPE DIAMETER	PIPE HEIGHT	PIPE WIDTH	WALL THICKNESS	TRENCH WIDTH	HEIGHT OF PIPE ZONE	AREA OF PIPE ZONE	BACKFILL SLURRY AREA
D	P-H	P-W	T	W	H	SA	SC
INCHES	INCHES	INCHES	INCHES	FT	FT	SF	S ²
12	12	12	2.20	2.97	1.83	4.39	1.40
15	15	15	2.25	3.25	2.13	6.91	2.07
18	18	18	2.50	3.93	2.42	9.26	2.89

BACKFILL SLURRY VOLUME (CUBIC YARDS) = (PIPE AREA) X PIPE PLAN LENGTH

27



NOTES
 (1) IF THE PIPE IS OUTSIDE THE TRAVELED WAY INCLUSIVE OF SHOULDERS AND AUXILIARY LANES, NATIVE BACKFILL MAY BE USED ABOVE BACKFILL SLURRY AND SHALL CONFORM TO SECTION 207 EMBANKMENT SPECIFICATIONS.
 (2) IF THE PIPE IS WITHIN THE TRAVELED WAY INCLUSIVE OF SHOULDERS AND AUXILIARY LANES, BACKFILL ABOVE BACKFILL SLURRY SHALL CONFORM TO SECTION 209.
 (3) BACKFILL SLURRY IS CONSIDERED INCIDENTAL TO DRAINAGE PIPE. NO SEPARATE PAYMENTS WILL BE MADE.
 (4) WHEN TEMPORARY SUBGRADE IS HIGHER THAN PROPOSED FINISHED SUBGRADE, PROVIDE GRANULAR BACKFILL AT LOCATIONS. COST FOR GRANULAR BACKFILL IS CONSIDERED INCIDENTAL TO CONSTRUCTION.
 (5) AT DIRECTION OF ENGINEER, BACKFILL SLURRY CAN BE ELIMINATED IN HIGH EMBANKMENT AREAS.

1
 BEDDING = MATERIAL THAT CONFORMS TO SECTION 608.2.2.2 REQUIRED REGARDLESS OF PIPE LOCATION

Addendum No. 01
 ID 228-22-74
 Revised Sheet 47
 December 20, 2023

BACKFILL SLURRY DETAIL - STORM SEWER STRUCTURES

BACKFILL SLURRY DETAIL - STORM SEWER TRENCH

PROJECT NO: 1228-22-74

HWY: IH 43

COUNTY: MILWAUKEE

STORM SEWER CONSTRUCTION DETAILS

SHEET

47

E
 WISDOT/CADD SHEET 42

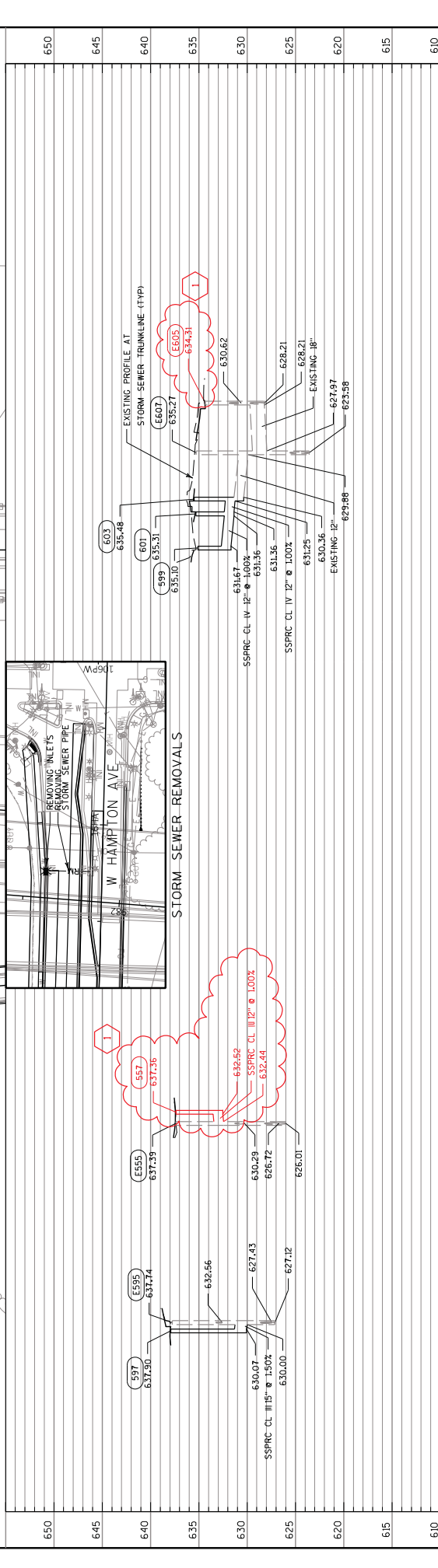
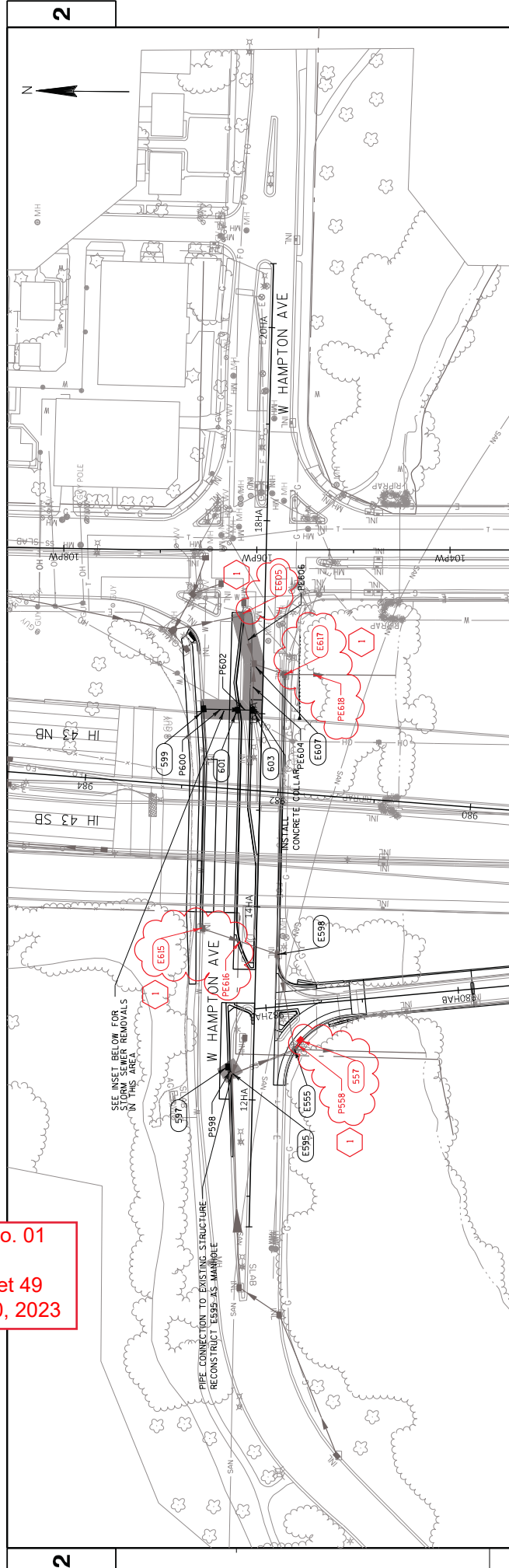
FILE NAME : S:\DOT\DOT_SE\1300224_143_N-S\FreeWay_North\Hampton\Des\IGN\DDN\12282274_Ramp\Plansheets\022500-SS.dgn

PLOT DATE : 12/9/2022

PLOT NAME : WWSL08K

PLOT SCALE : 1:200

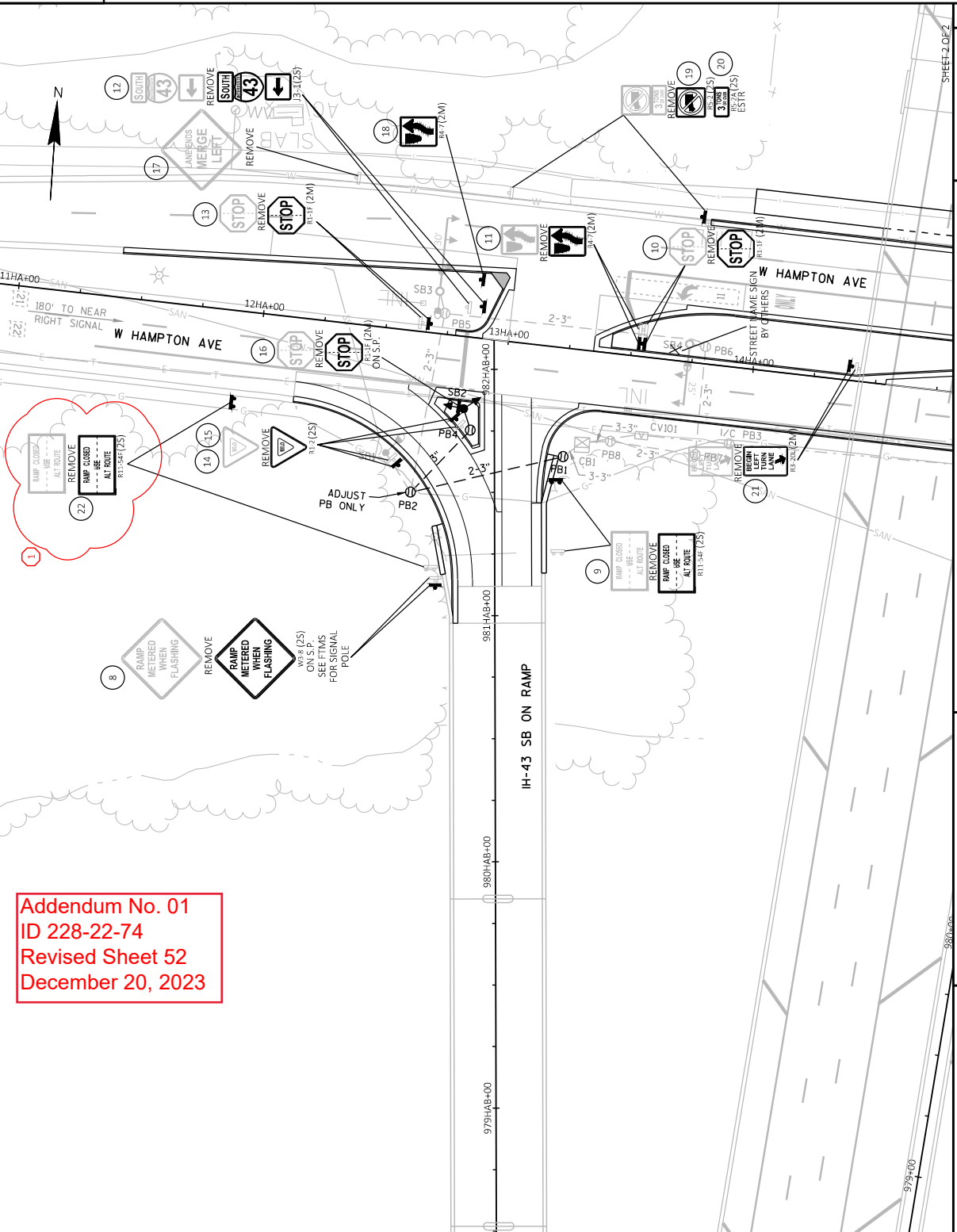
Addendum No. 01
 ID 228-22-74
 Revised Sheet 49
 December 20, 2023



PROJECT NO:	COUNTY:	HWY:	SHEET
1228-22-74	MILWAUKEE	IH 43	49
STORM SEWER PLAN AND PROFILE			E
FILE NAME : S:\DDOT\DOT_SE\190224_145_N-S\FreeWay_NorTh-Hampton\Des\IGN\IGN\12282274_Ramp\Plansheets\022553_SS.dgn			WISDOT/CADD SHEET 41
PLOT DATE : 12/14/2022			PLOT SCALE : 1:100
PLOT BY : wwoLok			

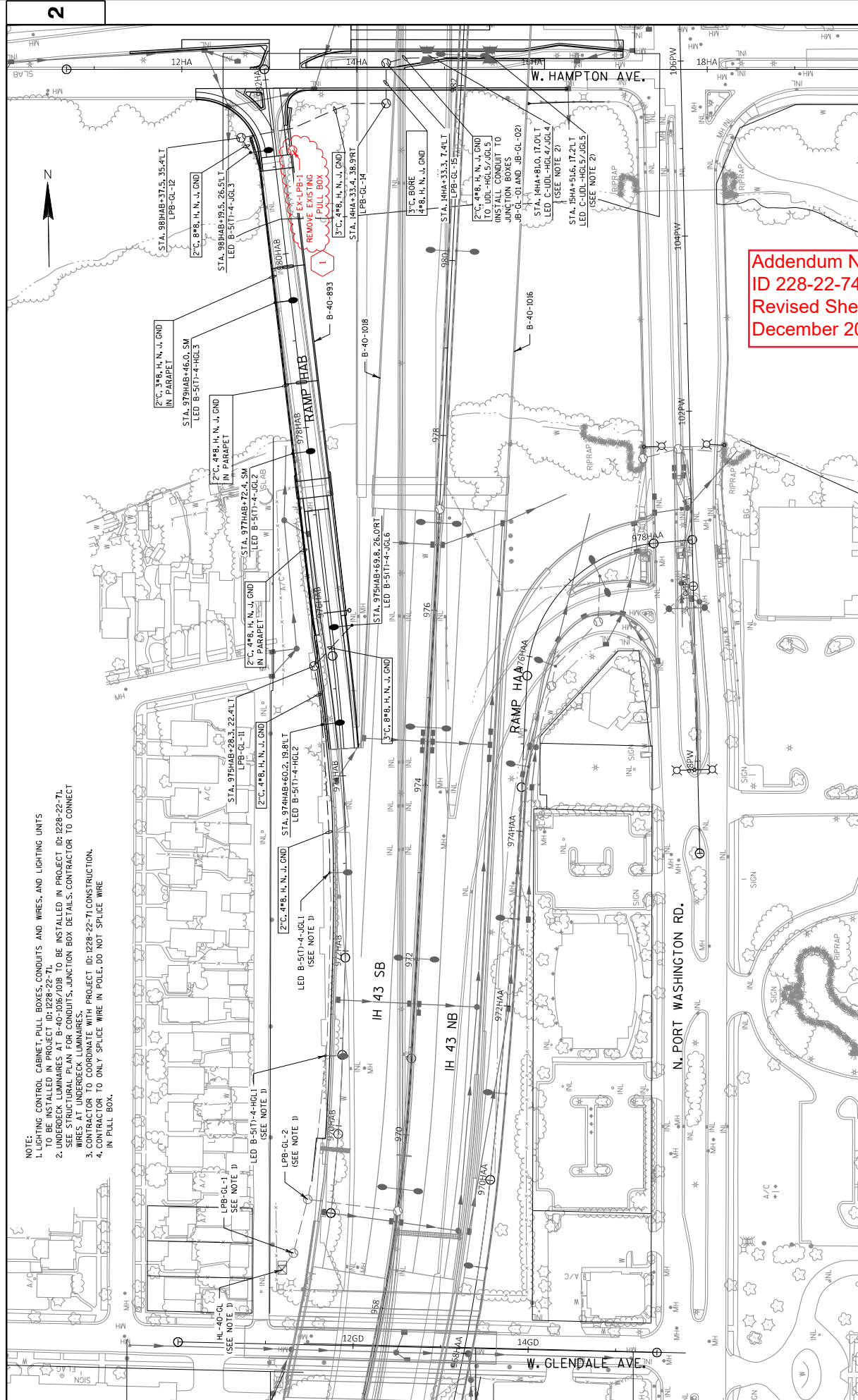
Addendum No. 01
ID 228-22-74
Revised Sheet 52
December 20, 2023

LEGEND
 EXISTING SIGN MOUNTED ON POST(S)
 EXISTING SIGN MOUNTED ON BRIDGE OR SIGN BRIDGE
 PROPOSED SIGN MOUNTED ON POST(S)
 PROPOSED SIGN MOUNTED ON BRIDGE OR SIGN BRIDGE
 VARIABLE MESSAGE SIGN
 EXISTING LIGHT OR SIGNAL POLE
 SIGN BRIDGE
 CANTILEVER SIGN BRIDGE
 (XX) DENOTES SIGN NUMBER
 (X) INDICATES SIGN SIZE
 ESTR EXISTING SIGN TO REMAIN



2

PROJECT NO: 1228-22-74	HWY: IH-43	COUNTY: MILWAUKEE	PERMANENT SIGNING PLAN	PLOT NAME: WAGNER_SOUTH	PLOT SCALE: 1 IN=40 FT	SHEET 52	E
FILE NAME: N:\PDS\3\CD\122822\1\4\SIGN\02301_L_P5_1B.DWG	LAYOUT NAME: 02302_L_P52	PLOT DATE: 11/15/2023 8:15 AM					WISDOT/CADD/SHEET 42



NOTE:
 1. LIGHTING CONTROL CABINET, PULL BOXES, CONDUITS AND WIRES, AND LIGHTING UNITS TO BE INSTALLED IN PROJECT ID: 1228-22-71.
 2. UNDERDECK LUMINAIRES AT B-40-1016/1018 TO BE INSTALLED IN PROJECT ID: 1228-22-71. SEE STRUCTURAL PLAN FOR CONDUITS, JUNCTION BOX DETAILS. CONTRACTOR TO CONNECT WIRES AT UNDERDECK LUMINAIRES.
 3. CONTRACTOR TO COORDINATE WITH PROJECT ID: 1228-22-71 CONSTRUCTION.
 4. CONTRACTOR TO ONLY SPLICE WIRE IN POLE, DO NOT SPLICE WIRE IN PULL BOX.

Addendum No. 01
 ID 228-22-74
 Revised Sheet 55
 December 20, 2023

CLEARING AND GRUBBING ITEMS

ROADWAY	STATION	TO	STATION	OFFSET	STA	STA
<u>RAMP HAB</u>	969+00 HAB	-	978+00 HAB	LT	9	1
	980+00 HAB	-	982+00 HAB	LT	2	2
TOTAL						11

ROADWAY	STATION	TO	STATION	SY
<u>RAMP HAB</u>	976+00 HAB	-	977+33 HAB	360
	981+05 HAB	-	981+90 HAB	460
<u>W HAMPTON AVENUE</u>	10+74 HA	-	17+05 HA	570
	TOTAL			

REMOVING ASPHALTIC SURFACE ITEM

ROADWAY	STATION	TO	STATION	OFFSET	SY
<u>W HAMPTON AVENUE</u>	13+18 HA	-	15+53 HA	LT	360
TOTAL					360

REMOVING CONCRETE PAVEMENT ITEM

ROADWAY	STATION	TO	STATION	SY
<u>RAMP HAB</u>	976+00 HAB	-	977+33 HAB	360
	981+05 HAB	-	981+90 HAB	460
<u>W HAMPTON AVENUE</u>	10+74 HA	-	17+05 HA	570
	TOTAL			

REMOVING CURB & GUTTER ITEM

ROADWAY	STATION	TO	STATION	LF
<u>W HAMPTON AVENUE</u>	13+71 HA	-	16+86 HA	630
TOTAL				630

REMOVING CONCRETE BARRIER ITEM

ROADWAY	STATION	TO	STATION	OFFSET	LF
<u>RAMP HAB</u>	976+00 HAB	-	977+32 HAB	LT	130
	977+16 HAB	-	977+33 HAB	RT	20
	981+05 HAB	-	981+18 HAB	LT	15
<u>W HAMPTON AVENUE</u>	981+05 HAB	-	981+19 HAB	RT	15
	TOTAL				

REMOVING SIDEWALK ITEM

ROADWAY	STATION	TO	STATION	SY	
<u>RAMP HAB</u>	981+26 HAB	-	981+72 HAB	RT	20
	13+09 HA	-	17+05 HA	LT/RT	190
TOTAL					210

Addendum No. 01
ID 228-22-74
Revised Sheet 93
December 20, 2023

*ADDITIONAL QUANTITIES FOUND ELSEWHERE
CATEGORY 1000 UNLESS OTHERWISE NOTED

CONCRETE PAVEMENT ITEMS			
ROADWAY	STATION TO STATION	SY	SY
		415.0009 CONCRETE PAVEMENT 9-INCH	415.0410 CONCRETE PAVEMENT APPROACH SLAB
RAMP HAB	974+31 HAB - 977+20 HAB 980+97 HAB - 981+90 HAB	- -	1000 440
W HAMPTON AVENUE	12+00 HA - 17+05 HA	808	-
TOTAL		808	1440

BASE AGGREGATE ITEMS *			
ROADWAY	STATION TO STATION	TON	TON
		310.0110 BASE AGGREGATE OPEN-GRADED	312.0110 SELECT CRUSHED MATERIAL
RAMP HAB	974+31 HAB - 977+20 HAB 980+97 HAB - 981+90 HAB	360 230	920 570
W HAMPTON AVENUE	11+40 HA - 17+04 HA	670	-
TOTAL		1260	1490

ASPHALTIC ITEMS			
ROADWAY	STATION TO STATION	TON	TON
		465.0105 ASPHALTIC SURFACE	
W HAMPTON AVENUE	13+18 HA - 13+93 HA	12	12
TOTAL			12

DRILLED BAR ITEMS			
ROADWAY	STATION TO STATION	OFFSET	EACH
			416.0610 DRILLED TIE BARS
RAMP HAB	974+31 HAB - 974+31 HAB 981+90 HAB - 982+00 HAB	LT/RT LT/RT	28 11
W HAMPTON AVENUE	10+74 HA - 17+04 HA	LT	450
TOTAL			450

COLD PATCH ITEM			
ROADWAY	STATION TO STATION	TON	TON
		495.1000.S COLD PATCH	
W HAMPTON AVENUE		1	1
TOTAL			1

BASE PATCHING ITEMS			
ROADWAY	STATION TO STATION	SY	LF
		390.0403 BASE PATCHING CONCRETE	416.0620 DRILLED DOWEL BARS
W HAMPTON AVENUE	13+42 HA - 17+04 HA	500	275
TOTAL		500	275

Addendum No. 01
ID 228-22-74
Revised Sheet 95
December 20, 2023

*ADDITIONAL QUANTITIES FOUND ELSEWHERE
CATEGORY 1000 UNLESS OTHERWISE NOTED

STORM SEWER PIPE REMOVALS

ROADWAY	STATION	OFFSET	TO	STATION	OFFSET	204.0245.0001 REMOVING STORM SEWER 12-INCH		204.0245.0002 REMOVING STORM SEWER 15-INCH	
						LF	LF	LF	LF
RAMP HAB	976HAB+98	8' LT	-	976HAB+93	15' RT	23			
	976HAB+98	35' LT	-	976HAB+98	12' LT	23			
HAMPTON AVE	15HA+50.58	57' LT	-	15HA+51.34	13' LT			44	
	TOTALS					46		44	

REMOVING INLETS

STATION	OFFSET	204.0220 REMOVING INLETS	
		EACH	EACH
RAMP HAB	976+93	17' RT	1
	976+98	9' LT	1
HAMPTON AVE	15HA+52	12' LT	1
	TOTAL		3

ADJUSTING / RECONSTRUCTING STRUCTURES

LOCATION	STRUCTURE ID	STATION	OFFSET FT	EXISTING RIM* ELEVATION	PROPOSED RIM** ELEVATION	611.0420 RECONSTRUCTING MANHOLES		611.0530*** MANHOLE COVERS TYPE J		611.0624*** INLET COVERS TYPE H		611.8115 ADJUSTING INLET COVERS	
						EACH	EACH	EACH	EACH	EACH	EACH	EACH	EACH
RAMP HAB	E551	975HAB+51	40' LT	635.95	636.57	1							
	E553	976HAB+98	37' LT	632.02	630.08	1							
	E555	981HAB+73	46' LT	637.02	637.39								
HAMPTON AVE	E595	12HA+26	21' LT	638.06	637.74	1							
	E598	13HA+51	24' RT	636.77	637.04								
	E605	17HA+01	21' LT	634.50	634.31								
	E615	13HA+76	57' LT	636.78	636.99								
TOTALS						3	2	1	1	2	2	3	1

* VERIFY EXISTING RIM ELEVATION IN FIELD
 ** FINAL RIM ELEVATION TO BE DETERMINED IN FIELD
 *** ADDITIONAL QUANTITIES SHOWN ELSEWHERE

CONCRETE COLLARS FOR PIPE

ROADWAY	STATION	OFFSET	PIPE ID	SIZE (IN)	EACH
HAMPTON AVE	16+06.90	10' LT	PE604	12	1
	TOTAL				1

PIPE CONNECTION TO EXISTING STRUCTURE

ROADWAY	STRUCTURE ID	STATION	OFFSET	EACH
RAMP HAB	E433	974HAB+42	24' RT	1
	E553	976HAB+98	35' LT	1
	E555	981HAB+73	44' LT	1
	E595	12HA+26	22' LT	1
TOTAL				4

Addendum No. 01
 ID 228-22-74
 Revised Sheet 103
 December 20, 2023

STORM SEWER STRUCTURES

STORM SEWER PIPES

STORM SEWER PIPES

ROADWAY	STRUCTURE NO.	STATION	OFFSET (FT)	LOCATION	RIM OR FLOW ELEV	STRUCTURE TYPE	INLET MANHOLE COVERS	DEPTH (FT)	BACKFILL SLURRY CY	STRUCTURE COMMENTS	PPE ID	FROM STR	TO STR	INLET ELEV	DBCH SLOPE ^A %	PIPE LENGTH ^B (FT)	PIPE LENGTH ^C (FT)	PIPE CLASS	PIPE SIZE (INCH)	BACKFILL SLURRY CY	PIPE COMMENTS	TOTAL BACKFILL SLURRY CY
RAMP HAB	429	974+50.00	11.5	LT	642.57	INLETS 2x2.5-FT	V	4.96	7	—	P430	429	E433	637.61	1.00	35	38	IV	18	8	—	15
RAMP HAB	E433	974+41.35	24.3	RT	644.15	—	—	—	—	—	—	—	—	—	—	—	—	—	—	—	—	—
RAMP HAB	547	976+85.86	15.0	LT	641.41	INLETS 2x2.5-FT	V	6.05	6	—	P548	547	549	635.36	1.00	8	10	III	12	1	—	7
RAMP HAB	549	976+95.68	15.0	LT	641.36	INLETS 2x2.5-FT	V	10.70	6	—	P550	549	E553	630.66	25.00	20	23	V	15	4	—	10
RAMP HAB	E551	975+50.51	39.8	LT	636.57	—	J	—	—	RECONSTRUCT STRUCTURE AND INSTALL NEW COVER	—	—	—	—	—	—	—	—	—	—	—	—
RAMP HAB	E553	976+97.71	37.0	LT	629.84	—	C	—	—	RECONSTRUCT STRUCTURE AND INSTALL NEW COVER	—	—	—	—	—	—	—	—	—	—	—	—
RAMP HAB	E555	981+73.26	46.3	LT	637.39	—	H-S	—	—	ADJUST STRUCTURE AND INSTALL NEW COVER	—	—	—	—	—	—	—	—	—	—	—	—
RAMP HAB	557	981+65.92	37.9	LT	637.36	INLETS 4-FT DIAMETER	H-S	4.84	8	—	P558	557	E555	632.52	1.00	8	12	III	12	1	—	9
HAMPTON AVE	597	12+33.42	23.9	LT	637.90	INLETS 4-FT DIAMETER	H	7.83	9	—	P598	597	E595	630.07	1.50	5	9	III	15	1	—	10
HAMPTON AVE	803	16+03.31	12.0	LT	636.07	INLETS 4-FT DIAMETER	H	5.58	8	—	PE604	803	E607	630.49	—	—	—	—	12	—	EXIST PIPE INTERPOL ELEV	8
HAMPTON AVE	801	16+03.35	23.2	LT	636.13	INLETS 4-FT DIAMETER	H	4.83	8	—	P602	801	603	631.30	1.00	9	13	IV	12	1	—	9
HAMPTON AVE	E605	17+00.95	21.2	LT	634.31	—	—	—	—	RECONSTRUCT STRUCTURE AND INSTALL EXISTING COVER	PE606	605	E607	628.21	—	—	—	—	18	—	EXIST PIPE INTERPOL ELEV	—
HAMPTON AVE	599	16+03.30	62.6	LT	636.02	INLETS 4-FT DIAMETER	H	3.89	8	—	P600	599	601	632.13	1.08	32	36	III	12	4	—	12
HAMPTON AVE	E615	19+75.83	56.9	LT	636.99	—	—	—	—	ADJUST STRUCTURE AND INSTALL NEW COVER	PE616	E615	E608	—	—	—	—	—	12	—	EXIST PIPE INTERPOL ELEV	—
HAMPTON AVE	E617	16+40.79	21.0	RT	635.26	—	—	—	—	ADJUST STRUCTURE AND INSTALL EXISTING COVER	PE618	E617	E618A	—	—	—	—	—	12	—	EXIST PIPE INTERPOL ELEV	—

Addendum No. 01
ID 228-22-74
Revised Sheet 104
December 20, 2023

STORM SEWER PIPE SUMMARY

608.0312 PIPE REINFORCED CONCRETE CLASS III 12-INCH LF	608.0315 PIPE REINFORCED CONCRETE CLASS III 15-INCH LF	608.0412 PIPE REINFORCED CONCRETE CLASS IV 12-INCH LF	608.0418 PIPE REINFORCED CONCRETE CLASS IV 18-INCH LF	608.0515 PIPE REINFORCED CONCRETE CLASS V 15-INCH LF
58	9	13	38	23

STORM SEWER STRUCTURE SUMMARY

611.3225 INLETS 2x2.5-FT EACH	611.3004 INLETS 4-FT EACH	611.0530* MANHOLE COVERS	611.0612 INLET COVERS	611.0624* INLET COVERS	611.0639 COVERS	611.0654 INLET COVERS
3	5	1	1	4	2	3

*ADDITIONAL QUANTITIES SHOWN ELSEWHERE

^A SLOPE CALCULATED BASED ON PIPE LENGTH. PIPE LENGTH REPRESENTS LENGTH OF PIPE ^B PIPE LENGTH SHOWN FOR SLOPE CALCULATION ONLY. ^C PIPE LENGTH SHOWN FOR PAY QUANTITY.
^D DEPTH = RIM OR FLOW ELEV - LOWEST PIPE INVERT ELEVATION MEASURED FROM INSIDE FACE OF STRUCTURE TO INSIDE FACE OF STRUCTURE NOT INTENDED FOR PAY QUANTITY.

LANDSCAPE PLANTINGS

BID ITEMS	SYMBOL	COMMON NAME	SCIENTIFIC NAME	QUANTITY (EACH)	TYPE	AVG. MATURE HEIGHT	SIZE WHEN PLANTED	ROOT ZONE MODE	MINIMUM BALL OR POT SIZE		MINIMUM HOLE SIZE		BRACE OR GUY	FERT. UNITS REQ'D	RODENT PROT'CT REQ'D	MULCH RING DIAM.	
									DIAM.	DEPTH	DIAM.	DEPTH					
Deciduous Trees:																	
632.0101.0001	ABS	Autumn Brilliance Serviceberry	Amelanchier x grandiflora 'Autumn Brilliance'	9	3T	20'	2" CAL	B&B	24"	14"	48"	14"	GUY	3	YES	60"	
632.0101.0002	CHB	Common Hackberry	Celtis occidentalis	6	2T	50'	2.5" CAL	B&B	28"	17"	52"	17"	GUY	4	YES	64"	
632.0101.0003	NC	Northern Catalpa	Catalpa speciosa	7	1T	50'	2.5" CAL	B&B	28"	17"	52"	17"	GUY	4	YES	64"	
632.0101.0004	PB	Paper Birch	Betula papyrifera	6	1T	30'	2.5" CAL	B&B	28"	17"	52"	17"	GUY	4	YES	64"	
632.0101.0005	PFC	Prairie Fire Crabapple	Malus x 'Prairie Fire'	12	3T	20'	2" CAL	B&B	24"	14"	48"	14"	GUY	3	YES	60"	
632.0101.0006	RHS	Robin Hill Serviceberry	Amelanchier x grandiflora 'Robin Hill'	11	3T	20'	2" CAL	B&B	24"	14"	48"	14"	GUY	3	YES	60"	
632.0101.0007	RJC	Red Jewel Crabapple	Malus 'Jewelcole'	8	3T	20'	2" CAL	B&B	24"	14"	48"	14"	GUY	3	YES	60"	
632.0101.0008	RRC	Royal Raindrops Crabapple	Malus x 'Royal Raindrops'	13	3T	20'	2" CAL	B&B	24"	14"	48"	14"	GUY	3	YES	60"	
632.0101.0009	SWO	Swamp White Oak	Quercus bicolor	7	1T	50'	2.5" CAL	B&B	28"	17"	52"	17"	GUY	4	YES	64"	
Deciduous Shrubs:																	
632.0201.0001	AWV	Arrowwood Viburnum	Viburnum dentatum	73	3S	6'	24"	CONT.	14"	8"	34"	8"	N/A	1	NO	46"	
632.0201.0002	RTD	Redtwig Dogwood	Cornus sericea	76	3S	8'	24"	CONT.	14"	8"	34"	8"	N/A	1	NO	46"	
Perennials:																	
632.0301.0001	SEED MIX 70	Mix 70 Native Seed Mix	WisDOT Spec 630 Seeding	2 lbs	3'	2.5'	N/A	SEED	N/A	N/A	N/A	N/A	N/A	N/A	NO	N/A	

NOTE: Installation contractor is responsible for verifying plant count from plan. Plan quantities take precedence over list.

LANDSCAPE PLANTING

632.9101	630.0170*	
SURVEILLANCE AND SEEDING MIXTURE		
CARE CYCLES	NO. 70	
LOCATION	EACH	LB
143	20	--
UNDISTRIBUTED	--	2
PROJECT 1228-22-74 TOTAL	20	2

*ADDITIONAL QUANTITIES SHOWN ELSEWHERE IN THE PLAN

Addendum No. 01
ID 228-22-74
Revised Sheet 105
December 20, 2023

Addendum No. 01
 ID 228-22-74
 Revised Sheet 108
 December 20, 2023

LIGHTING AND MISCELLANEOUS - FINAL

CATEGORY	STAGE	DESCRIPTION	LOCATION	EACH	EACH	LF	LF	EACH	EACH	EACH	EACH	EACH	EACH	EACH	REMARKS
1100		HGL2	974HAB+60.2	1	195	--	--	1	1	1	1	1	1	1	
		JGL2	977HAB+72.4	--	--	195	--	--	1	1	1	1	1	1	
		HGL3	979HAB+46.0	--	--	195	--	--	1	1	1	1	1	1	
		JGL3	981HAB+19.5	1	195	--	--	1	1	1	1	1	1	1	
		JGL6	975HAB+69.8	1	195	--	--	1	1	1	1	1	1	1	
		LPB-GL-11	975HAB+28.3	1	--	50	--	--	--	--	--	--	--	--	
		LPB-GL-12	981HAB+37.5	1	--	50	--	--	--	--	--	--	--	--	
		LPB-GL-14	14HA+33.4	1	--	50	--	--	--	--	--	--	--	--	
		LPB-GL-15	14HA+33.3	1	--	50	--	--	--	--	--	--	--	--	
		HGL4/JGL4	14HA+81.0	1	100	--	--	--	--	--	--	--	--	--	UDL INSTALLED IN PROJECT 1228-22-71
		HGL5/JGL5	15HA+51.6	1	100	--	--	--	--	--	--	--	--	--	UDL INSTALLED IN PROJECT 1228-22-71
		EX-LPB-1	981HAB+17	1	--	--	--	--	--	--	--	--	--	--	
				1	4	3	200	3	5	5	5	5	5	5	
TOTALS					1,175		200	3	5	5	5	5	5	5	

653.0905* REMOVING PULL BOX

1

1

*ADDITIONAL QUANTITIES FOUND ELSEWHERE

TYPE II PERMANENT SIGNING 1228-22-74

SIGN NO.	SIGN CODE & SIZE	SIGN MESSAGE	SIGN SIZE W x H [IN.] x [IN.]	637.2210 SIGN TYPE II REFLECTIVE H [SF]	637.2230 SIGN TYPE II REFLECTIVE F [SF]	637.2215 SIGN TYPE II REFLECTIVE H FOLDING [SF]	638.2102 MOVING SIGN TYPE II [EA]	638.2602 REMOVING SIGN TYPE II [EA]	638.3000 REM SMALL SIGN SUP [EA]	634.0618 POSTS WOOD 4" X 6" X 18" [EA]	634.0809 POSTS TUBULAR STEEL 2 X 2 X 9.5 FT (EA)	MOUNT ON SAME POST AS SIGN #	REMARKS / NEW SIGN LOCATION
1	R3-58(2S)		24 X 30	5,000							1		MOUNT ON TOP OF BARRIER WALL . SEE DETAIL-BRACKET INCIDENTAL
2	R10-6(2S)		24 X 36	6,000			1				1		OLD SIGN IS ON SIGNAL POLE. MOUNT NEW SIGN ON TOP OF BARRIER WALL . SEE DETAIL-BRACKET INCIDENTAL
3	R10-65R (2S)		24 X 30	5,000			1						OLD SIGN IS ON SIGNAL POLE. NEW SIGN WILL BE ON S-40-3103 OVERHEAD
4	R3-58(2S)	MILE 77	24 X 30	5,000			1		1	1		4	OLD SIGN IS ON SIGNAL POLE. MOUNT NEW SIGN ON WOOD POST
5	D10-2		24 X 36	6,000			1			1			OLD SIGN IS ON SIGNAL POLE. NEW SIGN WILL BE ON S-40-3103 OVERHEAD
6	R10-6 MODIFIED (2S)		24 X 30	5,000	16,000								MOUNT ON SIGNAL POLE
7	R10-65L(2S)		24 X 30	5,000					2	2		10	
8	W3-8(2S)		48 X 48			10,000							
9	R11-54F(2S)		48 X 30			7,460			1	1			
10	R1-1F(2M)		36 X 36						1	1			
11	R4-7(2M)		24 X 30	5,000					1	1			
12	J3-1(2S)		24 X 57	9,500					1	1			
13	MB3-3	IH 43	24 X 12										
14	M1-1		24 X 24										
15	MB6-1		21 X 21										
16	R1-1F(2M)		36 X 36	3,880		7,460			1	1			MOUNT ON SIGNAL POLE
17	R1-2(2S)		36 X 31	3,880					1	1			MOUNT ON SIGNAL POLE
18	R1-1F(2M)		36 X 36			7,460			1	1			
19	W9-2L		24 X 30	5,000									
20	R4-7(2M)		24 X 24	4,000					1	1			
21	R5-2(2S)		24 X 12	2,000					1	1			
22	R5-2A(2S)	3 TONS	24 X 12	2,000					1	1			
23	R3-58(2S)		24 X 30	6,000					1	1			
24	R11-54F(2S)		48 X 30			10,000			2	2			
TOTALS				71,260	16,000	42,380	1	18	13	13	2		

Addendum No. 01
 ID 228-22-74
 Revised Sheet 110
 December 20, 2023



Proposal Schedule of Items

Proposal ID: 20230110043 Project(s): 1228-22-74

Federal ID(s): WISC 2023175

SECTION: 0001 Contract Items

Alt Set ID: Alt Mbr ID:

Proposal Line Number	Item ID Description	Approximate Quantity and Units	Unit Price	Bid Amount
0002	201.0105 Clearing	11.000 STA	_____.	_____.
0004	201.0205 Grubbing	11.000 STA	_____.	_____.
0006	203.0260 Removing Structure Over Waterway Minimal Debris (structure) 0001. B-40- 893	1.000 EACH	_____.	_____.
0008	204.0100 Removing Concrete Pavement	1,390.000 SY	_____.	_____.
0010	204.0110 Removing Asphaltic Surface	360.000 SY	_____.	_____.
0012	204.0150 Removing Curb & Gutter	630.000 LF	_____.	_____.
0014	204.0155 Removing Concrete Sidewalk	210.000 SY	_____.	_____.
0016	204.0157 Removing Concrete Barrier	180.000 LF	_____.	_____.
0018	204.0170 Removing Fence	840.000 LF	_____.	_____.
0020	204.0195 Removing Concrete Bases	1.000 EACH	_____.	_____.
0022	204.0220 Removing Inlets	3.000 EACH	_____.	_____.
0024	204.0245 Removing Storm Sewer (size) 0001. 12- inch	46.000 LF	_____.	_____.
0026	204.0245 Removing Storm Sewer (size) 0002. 15- inch	44.000 LF	_____.	_____.
0028	205.0100 Excavation Common	3,118.000 CY	_____.	_____.
0030	206.1001 Excavation for Structures Bridges (structure) 0001. B-40-893	1.000 EACH	_____.	_____.



Proposal Schedule of Items

Proposal ID: 20230110043 Project(s): 1228-22-74

Federal ID(s): WISC 2023175

SECTION: 0001 Contract Items

Alt Set ID: Alt Mbr ID:

Proposal Line Number	Item ID Description	Approximate Quantity and Units	Unit Price	Bid Amount
0032	206.5001 Cofferdams (structure) 0001. B-40-893	1.000 EACH	_____.	_____.
0034	210.1500 Backfill Structure Type A	551.000 TON	_____.	_____.
0036	211.0201 Prepare Foundation for Concrete Pavement (project) 0001. 1228-22-74	1.000 EACH	_____.	_____.
0038	213.0100 Finishing Roadway (project) 0001. 1228-22-74	1.000 EACH	_____.	_____.
0040	305.0120 Base Aggregate Dense 1 1/4-Inch	1,683.000 TON	_____.	_____.
0042	310.0110 Base Aggregate Open-Graded	59.000 TON	_____.	_____.
0044	312.0110 Select Crushed Material	1,490.000 TON	_____.	_____.
0046	390.0403 Base Patching Concrete Shes	500.000 SY	_____.	_____.
0048	415.0090 Concrete Pavement 9-Inch	808.000 SY	_____.	_____.
0050	415.0100 Concrete Pavement 10-Inch	1,440.000 SY	_____.	_____.
0052	415.0410 Concrete Pavement Approach Slab	110.000 SY	_____.	_____.
0054	416.0610 Drilled Tie Bars	725.000 EACH	_____.	_____.
0056	416.0620 Drilled Dowel Bars	214.000 EACH	_____.	_____.
0058	465.0105 Asphaltic Surface	12.000 TON	_____.	_____.
0060	495.1000.S Cold patch	1.000 TON	_____.	_____.
0062	502.0100 Concrete Masonry Bridges	1,130.000 CY	_____.	_____.



Proposal Schedule of Items

Proposal ID: 20230110043 Project(s): 1228-22-74

Federal ID(s): WISC 2023175

SECTION: 0001 Contract Items

Alt Set ID: Alt Mbr ID:

Proposal Line Number	Item ID Description	Approximate Quantity and Units	Unit Price	Bid Amount
0064	502.3101 Expansion Device	72.000 LF	_____.	_____.
0066	502.3200 Protective Surface Treatment	1,577.000 SY	_____.	_____.
0068	502.3210 Pigmented Surface Sealer	488.000 SY	_____.	_____.
0070	503.0172 Prestressed Girder Type I 72W-Inch	1,408.000 LF	_____.	_____.
0072	504.0500 Concrete Masonry Retaining Walls	176.000 CY	_____.	_____.
0074	505.0400 Bar Steel Reinforcement HS Structures	44,960.000 LB	_____.	_____.
0076	505.0600 Bar Steel Reinforcement HS Coated Structures	174,590.000 LB	_____.	_____.
0078	505.0800.S Bar Steel Reinforcement HS Stainless Structures	680.000 LB	_____.	_____.
0080	506.2605 Bearing Pads Elastomeric Non-Laminated	16.000 EACH	_____.	_____.
0082	506.2610 Bearing Pads Elastomeric Laminated	8.000 EACH	_____.	_____.
0084	506.4000 Steel Diaphragms (structure) 0001. B-40-893	18.000 EACH	_____.	_____.
0086	516.0500 Rubberized Membrane Waterproofing	39.000 SY	_____.	_____.
0088	520.8000 Concrete Collars for Pipe	1.000 EACH	_____.	_____.
0090	531.2042 Drilling Shaft 42-Inch	18.000 LF	_____.	_____.
0092	531.5130 Foundation Single-Shaft Type MC-III (structure) 0001. S-40-3103	1.000 EACH	_____.	_____.



Proposal Schedule of Items

Proposal ID: 20230110043 Project(s): 1228-22-74

Federal ID(s): WISC 2023175

SECTION: 0001 Contract Items

Alt Set ID: Alt Mbr ID:

Proposal Line Number	Item ID Description	Approximate Quantity and Units	Unit Price	Bid Amount
0094	531.8990 Anchor Assemblies Poles on Structures	2.000 EACH	_____.	_____.
0096	532.5130 Monotube Cantilever Type III (structure) 0001. S-40-3103	1.000 EACH	_____.	_____.
0098	541.0300.S Noise Barriers Double-Sided Sound Absorptive (structure) 0001. N-40-104	16,423.000 SF	_____.	_____.
0100	550.0020 Pre-Boring Rock or Consolidated Materials	495.000 LF	_____.	_____.
0102	550.1140 Piling Steel HP 14-Inch X 73 Lb	559.000 LF	_____.	_____.
0104	601.0409 Concrete Curb & Gutter 30-Inch Type A	1,616.000 LF	_____.	_____.
0106	602.0410 Concrete Sidewalk 5-Inch	8,030.000 SF	_____.	_____.
0108	602.0415 Concrete Sidewalk 6-Inch	350.000 SF	_____.	_____.
0110	602.0505 Curb Ramp Detectable Warning Field Yellow	24.000 SF	_____.	_____.
0112	603.1142 Concrete Barrier Type S42	187.000 LF	_____.	_____.
0114	603.1156 Concrete Barrier Type S56	648.000 LF	_____.	_____.
0116	603.1342 Concrete Barrier Type S42B	20.000 LF	_____.	_____.
0118	603.8000 Concrete Barrier Temporary Precast Delivered	975.000 LF	_____.	_____.
0120	603.8125 Concrete Barrier Temporary Precast Installed	975.000 LF	_____.	_____.
0122	603.8500 Anchoring Concrete Barrier Temporary Precast	250.000 LF	_____.	_____.



Proposal Schedule of Items

Proposal ID: 20230110043 Project(s): 1228-22-74

Federal ID(s): WISC 2023175

SECTION: 0001 Contract Items

Alt Set ID: Alt Mbr ID:

Proposal Line Number	Item ID Description	Approximate Quantity and Units	Unit Price	Bid Amount
0124	604.0500 Slope Paving Crushed Aggregate	88.000 SY	_____.	_____.
0126	606.0300 Riprap Heavy	350.000 CY	_____.	_____.
0128	608.0312 Storm Sewer Pipe Reinforced Concrete Class III 12-Inch	58.000 LF	_____.	_____.
0130	608.0315 Storm Sewer Pipe Reinforced Concrete Class III 15-Inch	9.000 LF	_____.	_____.
0132	608.0412 Storm Sewer Pipe Reinforced Concrete Class IV 12-Inch	13.000 LF	_____.	_____.
0134	608.0418 Storm Sewer Pipe Reinforced Concrete Class IV 18-Inch	38.000 LF	_____.	_____.
0136	608.0515 Storm Sewer Pipe Reinforced Concrete Class V 15-Inch	23.000 LF	_____.	_____.
0138	611.0420 Reconstructing Manholes	3.000 EACH	_____.	_____.
0140	611.0530 Manhole Covers Type J	2.000 EACH	_____.	_____.
0142	611.0612 Inlet Covers Type C	1.000 EACH	_____.	_____.
0144	611.0624 Inlet Covers Type H	6.000 EACH	_____.	_____.
0146	611.0639 Inlet Covers Type H-S	2.000 EACH	_____.	_____.
0148	611.0654 Inlet Covers Type V	3.000 EACH	_____.	_____.
0150	611.3004 Inlets 4-FT Diameter	5.000 EACH	_____.	_____.
0152	611.3225 Inlets 2x2.5-FT	3.000 EACH	_____.	_____.



Proposal Schedule of Items

Proposal ID: 20230110043 Project(s): 1228-22-74

Federal ID(s): WISC 2023175

SECTION: 0001 Contract Items

Alt Set ID: Alt Mbr ID:

Proposal Line Number	Item ID Description	Approximate Quantity and Units	Unit Price	Bid Amount
0154	611.8115 Adjusting Inlet Covers	3.000 EACH	_____.	_____.
0156	612.0106 Pipe Underdrain 6-Inch	507.000 LF	_____.	_____.
0158	612.0406 Pipe Underdrain Wrapped 6-Inch	421.000 LF	_____.	_____.
0160	614.2300 MGS Guardrail 3	84.000 LF	_____.	_____.
0162	614.2610 MGS Guardrail Terminal EAT	1.000 EACH	_____.	_____.
0164	616.0206 Fence Chain Link 6-FT	816.000 LF	_____.	_____.
0166	616.0329 Gates Chain Link (width) 0002. 12-FT	1.000 EACH	_____.	_____.
0168	619.1000 Mobilization	1.000 EACH	_____.	_____.
0170	620.0300 Concrete Median Sloped Nose	245.000 SF	_____.	_____.
0172	623.0200 Dust Control Surface Treatment	3,900.000 SY	_____.	_____.
0174	624.0100 Water	45.000 MGAL	_____.	_____.
0176	627.0200 Mulching	43,680.000 SY	_____.	_____.
0178	628.1104 Erosion Bales	10.000 EACH	_____.	_____.
0180	628.1504 Silt Fence	1,445.000 LF	_____.	_____.
0182	628.1520 Silt Fence Maintenance	1,445.000 LF	_____.	_____.
0184	628.1550 Silt Screen	1,000.000 LF	_____.	_____.
0186	628.2004 Erosion Mat Class I Type B	3,382.000 SY	_____.	_____.



Proposal Schedule of Items

Proposal ID: 20230110043 Project(s): 1228-22-74

Federal ID(s): WISC 2023175

SECTION: 0001 Contract Items

Alt Set ID: Alt Mbr ID:

Proposal Line Number	Item ID Description	Approximate Quantity and Units	Unit Price	Bid Amount
0188	628.2027 Erosion Mat Class II Type C	3,918.000 SY	_____.	_____.
0190	628.6505 Soil Stabilizer Type A	1.000 ACRE	_____.	_____.
0192	628.6510 Soil Stabilizer Type B	1.000 ACRE	_____.	_____.
0194	628.7005 Inlet Protection Type A	11.000 EACH	_____.	_____.
0196	628.7010 Inlet Protection Type B	1.000 EACH	_____.	_____.
0198	628.7015 Inlet Protection Type C	6.000 EACH	_____.	_____.
0200	628.7020 Inlet Protection Type D	20.000 EACH	_____.	_____.
0202	628.7504 Temporary Ditch Checks	48.000 LF	_____.	_____.
0204	628.7560 Tracking Pads	2.000 EACH	_____.	_____.
0206	629.0210 Fertilizer Type B	34.000 CWT	_____.	_____.
0208	630.0120 Seeding Mixture No. 20	294.000 LB	_____.	_____.
0210	630.0170 Seeding Mixture No. 70	238.000 LB	_____.	_____.
0212	630.0500 Seed Water	1,146.000 MGAL	_____.	_____.
0214	632.0101 Trees (species) (size) (root) 0001. Autumn Brilliance Serviceberry 2" CAL B&B	9.000 EACH	_____.	_____.
0216	632.0101 Trees (species) (size) (root) 0002. Common Hackberry 2.5" CAL B&B	6.000 EACH	_____.	_____.



Proposal Schedule of Items

Proposal ID: 20230110043 Project(s): 1228-22-74

Federal ID(s): WISC 2023175

SECTION: 0001 Contract Items

Alt Set ID: Alt Mbr ID:

Proposal Line Number	Item ID Description	Approximate Quantity and Units	Unit Price	Bid Amount
0218	632.0101 Trees (species) (size) (root) 0003. Northern Catalpa 2.5" CAL B&B	7.000 EACH	_____.	_____.
0220	632.0101 Trees (species) (size) (root) 0004. Paper Birch 2.5" CAL B&B	6.000 EACH	_____.	_____.
0222	632.0101 Trees (species) (size) (root) 0005. Prairifire Crabapple 2" CAL B&B	12.000 EACH	_____.	_____.
0224	632.0101 Trees (species) (size) (root) 0006. Robin Hill Serviceberry 2" CAL B&B	11.000 EACH	_____.	_____.
0226	632.0101 Trees (species) (size) (root) 0007. Red Jewel Crabapple 2" CAL B&B	8.000 EACH	_____.	_____.
0228	632.0101 Trees (species) (size) (root) 0008. Royal Raindrops Crabapple 2" CAL B&B	13.000 EACH	_____.	_____.
0230	632.0101 Trees (species) (size) (root) 0009. Swamp White Oak 2.5" CAL B&B	7.000 EACH	_____.	_____.
0232	632.0201 Shrubs (species) (size) (root) 0001. Arrowwood Viburnum 24" CG.	73.000 EACH	_____.	_____.
0234	632.0201 Shrubs (species) (size) (root) 0002. Redtwig Dogwood 24" CG.	76.000 EACH	_____.	_____.
0236	632.9101 Landscape Planting Surveillance and Care Cycles	20.000 EACH	_____.	_____.
0238	634.0618 Posts Wood 4x6-Inch X 18-FT	13.000 EACH	_____.	_____.
0240	634.0809 Posts Tubular Steel 2x2-Inch X 9.5-FT	2.000 EACH	_____.	_____.
0242	637.2210 Signs Type II Reflective H	71.260 SF	_____.	_____.
0244	637.2215 Signs Type II Reflective H Folding	42.380 SF	_____.	_____.



Proposal Schedule of Items

Proposal ID: 20230110043 Project(s): 1228-22-74

Federal ID(s): WISC 2023175

SECTION: 0001 Contract Items

Alt Set ID: Alt Mbr ID:

Proposal Line Number	Item ID Description	Approximate Quantity and Units	Unit Price	Bid Amount
0246	637.2230 Signs Type II Reflective F	16.000 SF	_____.	_____.
0248	638.2102 Moving Signs Type II	1.000 EACH	_____.	_____.
0250	638.2602 Removing Signs Type II	18.000 EACH	_____.	_____.
0252	638.3000 Removing Small Sign Supports	13.000 EACH	_____.	_____.
0254	643.0300 Traffic Control Drums	22,330.000 DAY	_____.	_____.
0256	643.0420 Traffic Control Barricades Type III	2,400.000 DAY	_____.	_____.
0258	643.0705 Traffic Control Warning Lights Type A	4,800.000 DAY	_____.	_____.
0260	643.0715 Traffic Control Warning Lights Type C	3,260.000 DAY	_____.	_____.
0262	643.0800 Traffic Control Arrow Boards	500.000 DAY	_____.	_____.
0264	643.0900 Traffic Control Signs	7,685.000 DAY	_____.	_____.
0266	643.0920 Traffic Control Covering Signs Type II	2.000 EACH	_____.	_____.
0268	643.3150 Temporary Marking Line Removable Tape 4-Inch	1,185.000 LF	_____.	_____.
0270	643.3250 Temporary Marking Line Removable Tape 8-Inch	70.000 LF	_____.	_____.
0272	643.3960 Temporary Marking Removable Mask Out Tape 6-Inch	60.000 LF	_____.	_____.
0274	643.5000 Traffic Control	1.000 EACH	_____.	_____.
0276	644.1810 Temporary Pedestrian Barricade	400.000 LF	_____.	_____.



Proposal Schedule of Items

Proposal ID: 20230110043 Project(s): 1228-22-74

Federal ID(s): WISC 2023175

SECTION: 0001 Contract Items

Alt Set ID: Alt Mbr ID:

Proposal Line Number	Item ID Description	Approximate Quantity and Units	Unit Price	Bid Amount
0278	645.0111 Geotextile Type DF Schedule A	345.000 SY	_____.	_____.
0280	645.0120 Geotextile Type HR	567.000 SY	_____.	_____.
0282	646.1020 Marking Line Epoxy 4-Inch	179.000 LF	_____.	_____.
0284	646.1040 Marking Line Grooved Wet Ref Epoxy 4-Inch	1,515.000 LF	_____.	_____.
0286	646.1555 Marking Line Grooved Contrast Permanent Tape 4-Inch	77.000 LF	_____.	_____.
0288	646.3020 Marking Line Epoxy 8-Inch	357.000 LF	_____.	_____.
0290	646.3555 Marking Line Grooved Contrast Permanent Tape 8-Inch	366.000 LF	_____.	_____.
0292	646.5020 Marking Arrow Epoxy	3.000 EACH	_____.	_____.
0294	646.5120 Marking Word Epoxy	1.000 EACH	_____.	_____.
0296	646.6120 Marking Stop Line Epoxy 18-Inch	45.000 LF	_____.	_____.
0298	646.8120 Marking Curb Epoxy	105.000 LF	_____.	_____.
0300	646.8220 Marking Island Nose Epoxy	3.000 EACH	_____.	_____.
0302	646.9000 Marking Removal Line 4-Inch	52.000 LF	_____.	_____.
0304	652.0125 Conduit Rigid Metallic 2-Inch	239.000 LF	_____.	_____.
0306	652.0225 Conduit Rigid Nonmetallic Schedule 40 2-Inch	2,377.000 LF	_____.	_____.



Proposal Schedule of Items

Proposal ID: 20230110043 Project(s): 1228-22-74

Federal ID(s): WISC 2023175

SECTION: 0001 Contract Items

Alt Set ID: Alt Mbr ID:

Proposal Line Number	Item ID Description	Approximate Quantity and Units	Unit Price	Bid Amount
0308	652.0235 Conduit Rigid Nonmetallic Schedule 40 3-Inch	410.000 LF	_____.	_____.
0310	652.0615 Conduit Special 3-Inch	51.000 LF	_____.	_____.
0312	652.0700.S Install Conduit into Existing Item	1.000 EACH	_____.	_____.
0314	652.0800 Conduit Loop Detector	465.000 LF	_____.	_____.
0316	653.0140 Pull Boxes Steel 24x42-Inch	12.000 EACH	_____.	_____.
0318	653.0220 Junction Boxes 18x6x6-Inch	2.000 EACH	_____.	_____.
0320	653.0222 Junction Boxes 18x12x6-Inch	5.000 EACH	_____.	_____.
0322	653.0900 Adjusting Pull Boxes	1.000 EACH	_____.	_____.
0324	653.0905 Removing Pull Boxes	3.000 EACH	_____.	_____.
0326	654.0101 Concrete Bases Type 1	2.000 EACH	_____.	_____.
0328	654.0105 Concrete Bases Type 5	3.000 EACH	_____.	_____.
0330	655.0230 Cable Traffic Signal 5-14 AWG	618.000 LF	_____.	_____.
0332	655.0240 Cable Traffic Signal 7-14 AWG	272.000 LF	_____.	_____.
0334	655.0320 Cable Type UF 2-10 AWG Grounded	171.000 LF	_____.	_____.
0336	655.0515 Electrical Wire Traffic Signals 10 AWG	535.000 LF	_____.	_____.
0338	655.0610 Electrical Wire Lighting 12 AWG	1,175.000 LF	_____.	_____.



Proposal Schedule of Items

Proposal ID: 20230110043 Project(s): 1228-22-74

Federal ID(s): WISC 2023175

SECTION: 0001 Contract Items

Alt Set ID: Alt Mbr ID:

Proposal Line Number	Item ID Description	Approximate Quantity and Units	Unit Price	Bid Amount
0340	655.0615 Electrical Wire Lighting 10 AWG	200.000 LF	_____.	_____.
0342	655.0620 Electrical Wire Lighting 8 AWG	5,084.000 LF	_____.	_____.
0344	655.0700 Loop Detector Lead In Cable	2,040.000 LF	_____.	_____.
0346	655.0800 Loop Detector Wire	1,205.000 LF	_____.	_____.
0348	657.0255 Transformer Bases Breakaway 11 1/2-Inch Bolt Circle	3.000 EACH	_____.	_____.
0350	657.0322 Poles Type 5-Aluminum	5.000 EACH	_____.	_____.
0352	657.0605 Luminaire Arms Single Member 4 1/2-Inch Clamp 4-FT	5.000 EACH	_____.	_____.
0354	658.0171 Traffic Signal Face 1S 12-Inch	2.000 EACH	_____.	_____.
0356	658.0174 Traffic Signal Face 4S 12-Inch	1.000 EACH	_____.	_____.
0358	658.5070 Signal Mounting Hardware (location) 0001. IH-43 SB Ramp & W Hampton Ave	1.000 EACH	_____.	_____.
0360	659.1120 Luminaires Utility LED B	5.000 EACH	_____.	_____.
0362	659.5000.S Lamp, Ballast, LED, Switch Disposal by Contractor	3.000 EACH	_____.	_____.
0364	670.0101 Field System Integrator	1.000 EACH	_____.	_____.
0366	670.0201 ITS Documentation	1.000 EACH	_____.	_____.
0368	674.0300 Remove Cable	709.000 LF	_____.	_____.
0370	674.0400 Reinstall Cable	566.000 LF	_____.	_____.



Proposal Schedule of Items

Proposal ID: 20230110043 Project(s): 1228-22-74

Federal ID(s): WISC 2023175

SECTION: 0001 Contract Items

Alt Set ID: Alt Mbr ID:

Proposal Line Number	Item ID Description	Approximate Quantity and Units	Unit Price	Bid Amount
0372	678.0501 Communication System Testing	1.000 EACH	_____.	_____.
0374	690.0150 Sawing Asphalt	8.000 LF	_____.	_____.
0376	690.0250 Sawing Concrete	3,334.000 LF	_____.	_____.
0378	715.0502 Incentive Strength Concrete Structures	7,836.000 DOL	1.00000	7,836.00
0380	715.0603 Incentive Strength Concrete Barrier	170.000 DOL	1.00000	170.00
0382	715.0720 Incentive Compressive Strength Concrete Pavement	708.000 DOL	1.00000	708.00
0384	999.2000.S Installing and Maintaining Bird Deterrent System (station) 0001. 977+33	1.000 EACH	_____.	_____.
0386	ASP.1T0A On-the-Job Training Apprentice at \$5.00/HR	3,200.000 HRS	5.00000	16,000.00
0388	ASP.1T0G On-the-Job Training Graduate at \$5.00/HR	14,400.000 HRS	5.00000	72,000.00
0390	SPV.0060 Special 0001. Survey Project 1228-22-74	1.000 EACH	_____.	_____.
0392	SPV.0060 Special 0002. Maintain and Improve Temporary Causeway Left-In-Place	1.000 EACH	_____.	_____.
0394	SPV.0060 Special 0006. Baseline CPM Progress Schedule	1.000 EACH	_____.	_____.
0396	SPV.0060 Special 0007. Monthly CPM Progress Schedule Updates	6.000 EACH	_____.	_____.
0398	SPV.0060 Special 0603. Exposing Existing Infrastructure Paved Area	3.000 EACH	_____.	_____.



Proposal Schedule of Items

Proposal ID: 20230110043 Project(s): 1228-22-74

Federal ID(s): WISC 2023175

SECTION: 0001 Contract Items

Alt Set ID: Alt Mbr ID:

Proposal Line Number	Item ID Description	Approximate Quantity and Units	Unit Price	Bid Amount
0400	SPV.0060 Special 0604. Exposing Existing Infrastructure Unpaved Area	3.000 EACH	_____.	_____.
0402	SPV.0060 Special 2021. Signal Assembly Ramp Control Overhead	2.000 EACH	_____.	_____.
0404	SPV.0060 Special 2022. Signal Assembly Advance Flasher Type 1	1.000 EACH	_____.	_____.
0406	SPV.0060 Special 3001. Relocate Existing Signal Pole and Heads SB2	1.000 EACH	_____.	_____.
0408	SPV.0060 Special 4001. Anchor Assemblies Noise Barrier Structures R-40-728	14.000 EACH	_____.	_____.
0410	SPV.0060 Special 8004. Pipe Connection to Existing Structure	4.000 EACH	_____.	_____.
0412	SPV.0075 Special 0001. Pavement Cleanup Project 1228-22-74	500.000 HRS	_____.	_____.
0414	SPV.0090 Special 0001. Concrete Curb & Gutter 4-inch Sloped 60-inch Type A	152.000 LF	_____.	_____.
0416	SPV.0090 Special 0002. Concrete Curb & Gutter 54-inch Type A	10.000 LF	_____.	_____.
0418	SPV.0165 Special 4001. Wall Concrete Panel Mechanically Stabilized Earth R-40-728	872.000 SF	_____.	_____.
0420	SPV.0180 Special 0301. Topsoil Special	50,979.000 SY	_____.	_____.
0422	SPV.0195 Special 0001. Management of Contaminated Sediment	170.000 TON	_____.	_____.
0424	SPV.0195 Special 2001. Select Crushed Material for Travel Corridor	18.000 TON	_____.	_____.



Proposal Schedule of Items

Proposal ID: 20230110043 Project(s): 1228-22-74

Federal ID(s): WISC 2023175

SECTION: 0001 Contract Items

Alt Set ID: Alt Mbr ID:

Proposal Line Number	Item ID Description	Approximate Quantity and Units	Unit Price	Bid Amount
0426	611.0430 Reconstructing Inlets	2.000 EACH	_____.	_____.
		Section: 0001	Total:	_____.
			Total Bid:	_____.