



Wisconsin Department of Transportation

Division of Transportation Systems Development

Bureau of Project Development
4822 Madison Yards Way, 4th Floor South
Madison, WI 53705

February 2, 2023

Telephone: (608) 266-1631
Facsimile (FAX): (608) 266-8459

NOTICE TO ALL CONTRACTORS:

Proposal #03: 1620-05-70, WIS 2023236
New Lisbon - Necedah
25th St W to 400' N of Kingsbury Dr
STH 80
Juneau County

Letting of February 14, 2023

This is Addendum No. 01, which provides for the following:

Special Provisions:

Revised Special Provisions	
Article No.	Description
15	Exclusion Fencing, Item SPV.0090.01

Schedule of Items:

Revised Bid Item Quantities					
Bid Item	Item Description	Unit	Proposal Total Prior to Addendum	Proposal Quantity Change (-)	Proposal Total After Addendum
204.0165	Removing Guardrail	LF	201	-51	150
628.7504	Temporary Ditch Checks	LF	150	120	270
643.3105	Temporary Marking Line Paint 4-Inch	LF	13,800	-6,900	6,900

Added Bid Item Quantities					
Bid Item	Item Description	Unit	Proposal Total Prior to Addendum	Quantity Added	Proposal Total After Addendum
614.0370	Steel Plate Beam Guard Energy Absorbing Terminal	EACH	0	3	3
628.1504	Silt Fence	LF	0	500	500
628.1520	Silt Fence Maintenance	LF	0	500	500
646.4520	Marking Line Same Day Epoxy 4-Inch	LF	0	10,640	10,640

Deleted Bid Item Quantities					
Bid Item	Item Description	Unit	Proposal Total Prior to Addendum	Proposal Quantity Change (-)	Proposal Total After Addendum
614.2500	MGS Thrie Beam Transition	LF	51	-51	0
614.2610	MGS Guardrail Terminal EAT	EACH	3	-3	0
646.1020	Marking Line Epoxy 4-Inch	LF	10,640	-10,640	0

Plan Sheets:

Revised Plan Sheets	
Plan Sheet	Plan Sheet Title (brief description of changes to sheet)
14-17	Permanent Signing and Marking (Change centerline marking call outs to same day)
18	Traffic Control Overview (Update marking notes)
26, 28-30	Miscellaneous Quantities (3 Revised Bid Item, 4 Added Bid Items, 3 Deleted Bid Items)
34	Plan Sheet (Updated Notes/Callouts and Exclusion Fencing layout)
100-103	Cross Sections (Removed callouts of MGS EATs)

The responsibility for notifying potential subcontractors and suppliers of these changes remains with the prime contractor.

Sincerely,

Mike Coleman

Proposal Development Specialist
Proposal Management Section

ADDENDUM NO. 01

1620-05-70

February 2, 2023

Special Provisions

15. Exclusion Fencing, Item SPV.0090.01.

Replace entire section titled B Materials with the following:

B Materials

Furnish Exclusion Fencing materials in accordance with standard specification 628.2.

Replace entire section titled C Construction with the following:

C Construction

Installation, inspection, maintenance, and removal of Exclusion Fencing shall conform to standard spec 628.3.4 and the plan details except as noted below:

Furnish and install the Exclusion Fencing as shown on the plans or as directed by the engineer prior to April 15.

Install Exclusion Fencing with turn-arounds at the ends and at any access openings needed in the fencing.

Inspect Exclusion Fencing at least twice weekly on non-consecutive days and after any significant rain event (defined as a ¾-inch downpour or 1.5 inches of rain in any 24-hour period). Repairs to the fencing must be made immediately.

The non-construction side of the fence shall be kept free of tall vegetation that could also allow animals to maneuver over the fencing at the direction of the engineer.

Remove the fence only after construction activities have been completed or the active period of the Timber Rattlesnake ends (March 31 to November 16), whichever occurs first. If so directed by the engineer, remove trapped silt prior to removing the fence.

Schedule of Items

Attached, dated February 2, 2023, are the revised Schedule of Items Pages 1 – 4.

Plan Sheets

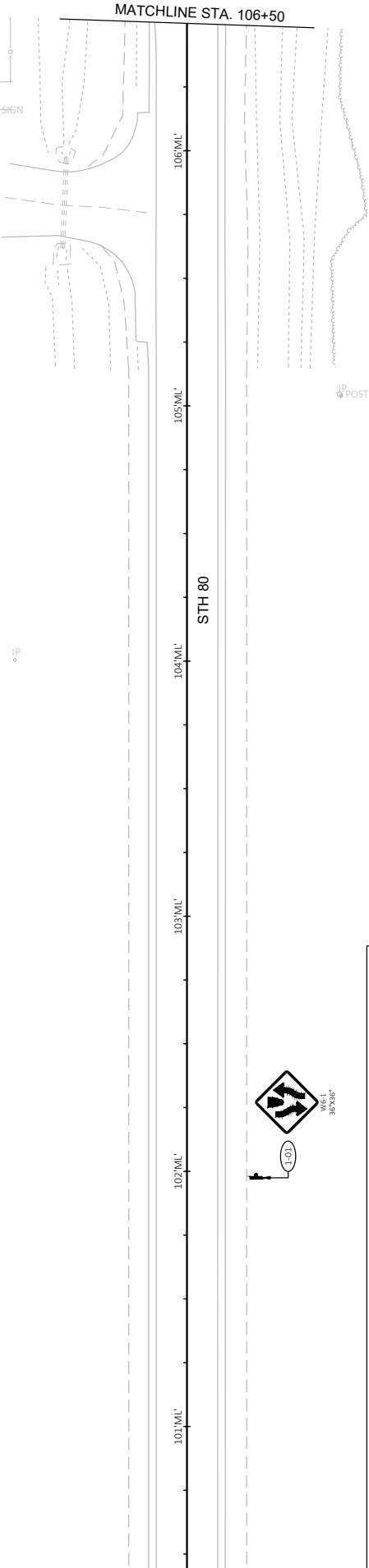
The following 8½ x 11-inch sheets are attached and made part of the plans for this proposal:

Revised: 14-18, 26, 28-30, 34 and 100-103.

END OF ADDENDUM

MATCHLINE STA. 106+50

MATCHLINE STA. 112+00

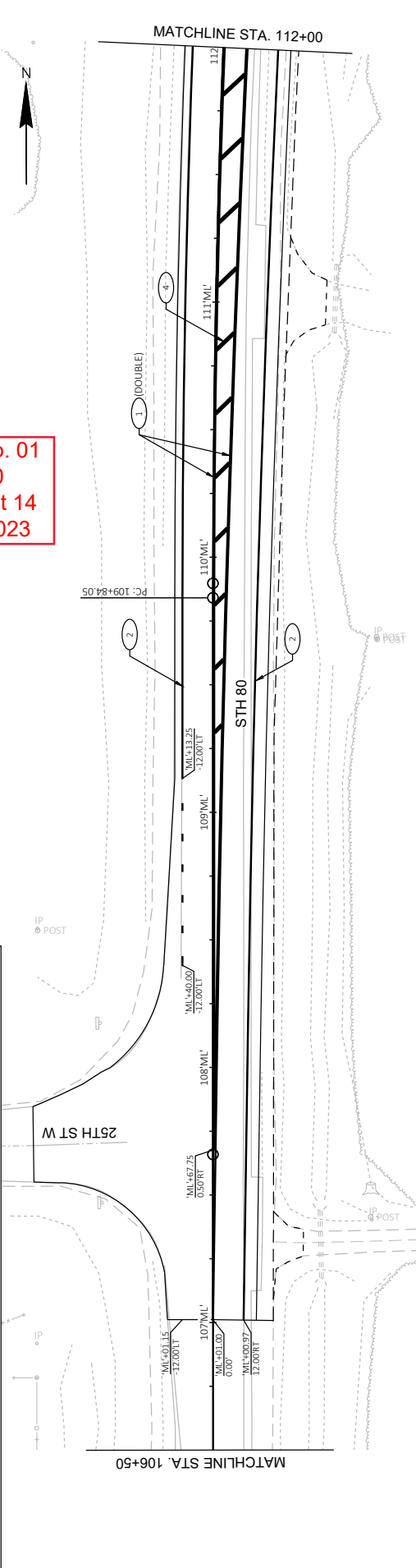


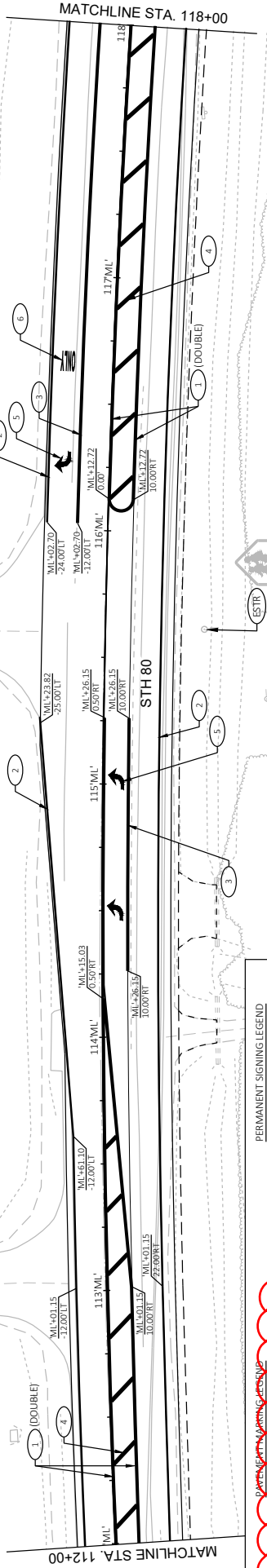
Addendum No. 01
 ID 1620-05-70
 Revised Sheet 14
 February 2, 2023

PERMANENT SIGNING LEGEND

<ol style="list-style-type: none"> 1 MARKING LINE SAME DAY EPOXY 4-INCH (YELLOW) 2 MARKING LINE 8-00-05 WET EPOXY 2-INCH (WHITE) 3 MARKING LINE GROOVED WET EPOXY 8-INCH (WHITE) 4 MARKING DIAGONAL EPOXY 12-INCH (YELLOW) (25' SPACING) 5 MARKING ARROW EPOXY 6 MARKING WORDS EPOXY 	<ol style="list-style-type: none"> (ESTR) PERMANENT SIGN TO REMAIN EXISTING SIGN POST PROPOSED SIGN POST
--	---

NOTE: SEE SDD PAVEMENT MARKING (TURN LANES) FOR MORE DETAILS.



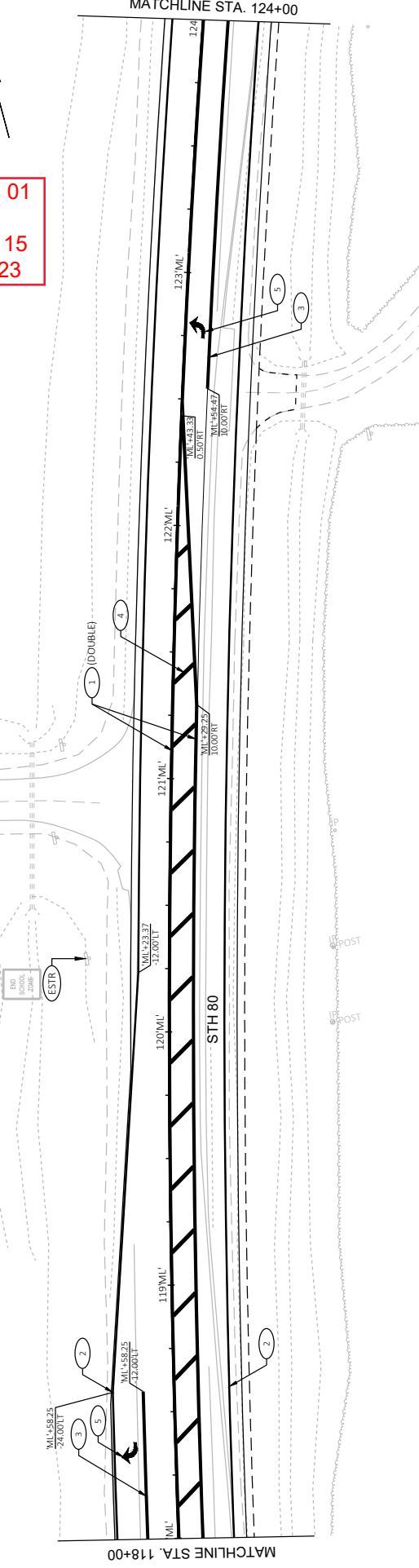


Addendum No. 01
ID 1620-05-70
Revised Sheet 15
February 2, 2023

PERMANENT SIGNING LEGEND

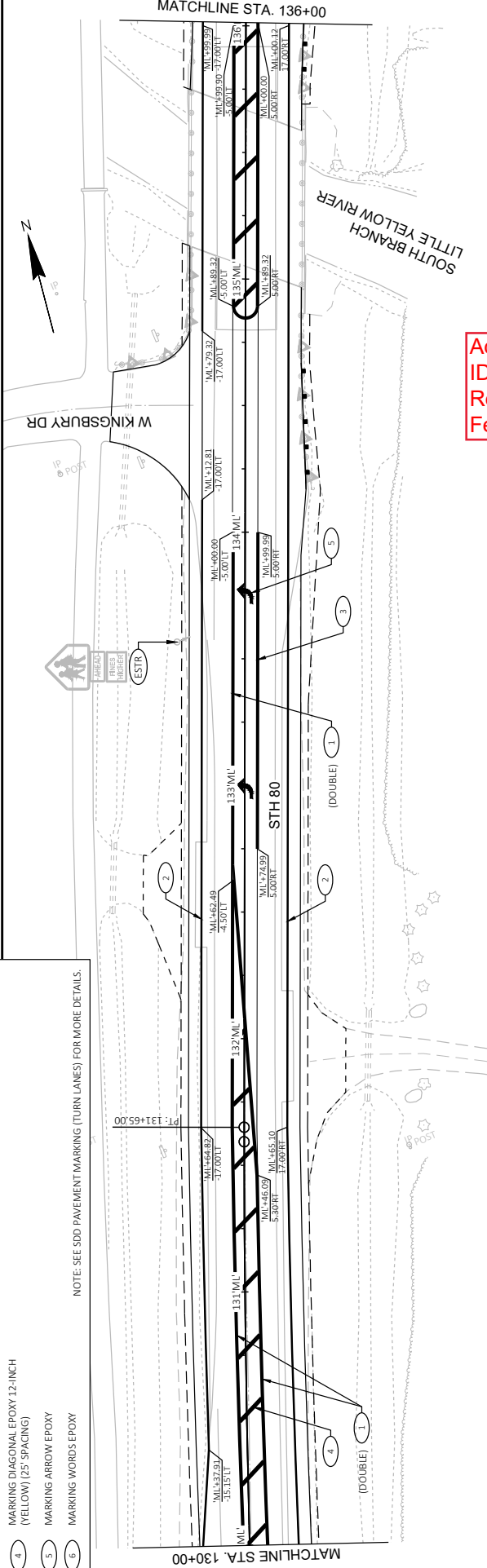
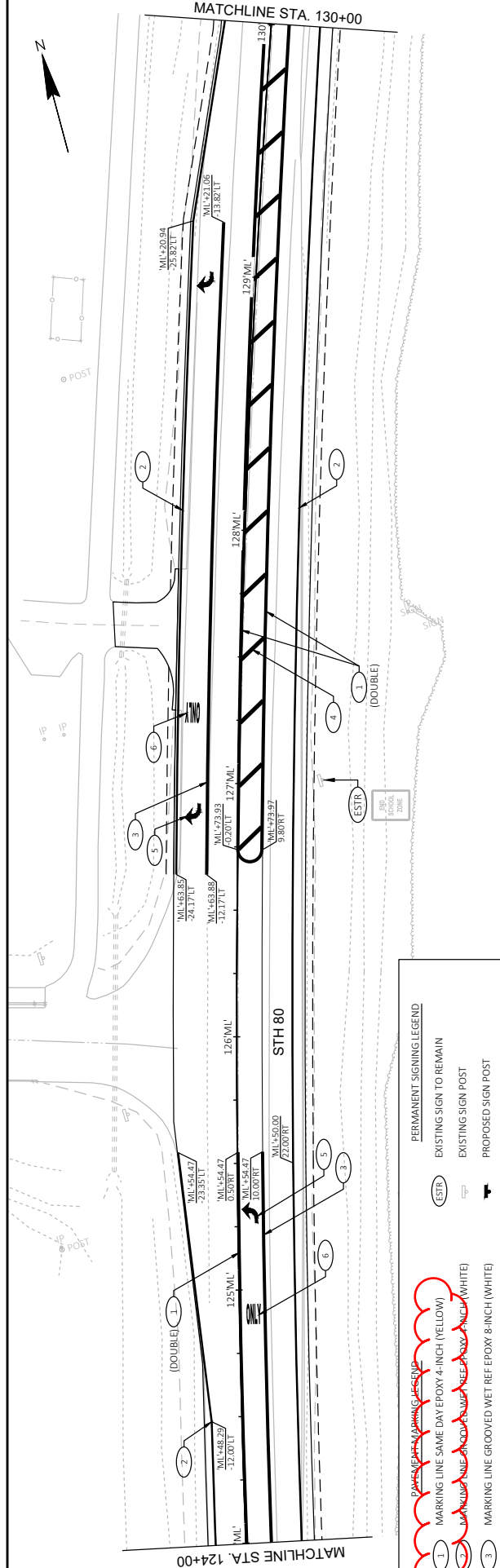
1	MARKING LINE SAME DAY EPOXY 4-INCH (YELLOW)	ESTR	EXISTING SIGN TO REMAIN
2	MARKING LINE GROOVED WET REF EPOXY 8-INCH (WHITE)	EXISTING SIGN POST	EXISTING SIGN POST
3	MARKING LINE GROOVED WET REF EPOXY 8-INCH (WHITE)	PROPOSED SIGN POST	PROPOSED SIGN POST
4	MARKING DIAGONAL EPOXY 12-INCH (YELLOW) [25' SPACING]		
5	MARKING ARROW EPOXY		
6	MARKING WORDS EPOXY		

NOTE: SEE SDD PAVEMENT MARKING (TURN LANES) FOR MORE DETAILS.



MATCHLINE STA. 130+00

MATCHLINE STA. 136+00



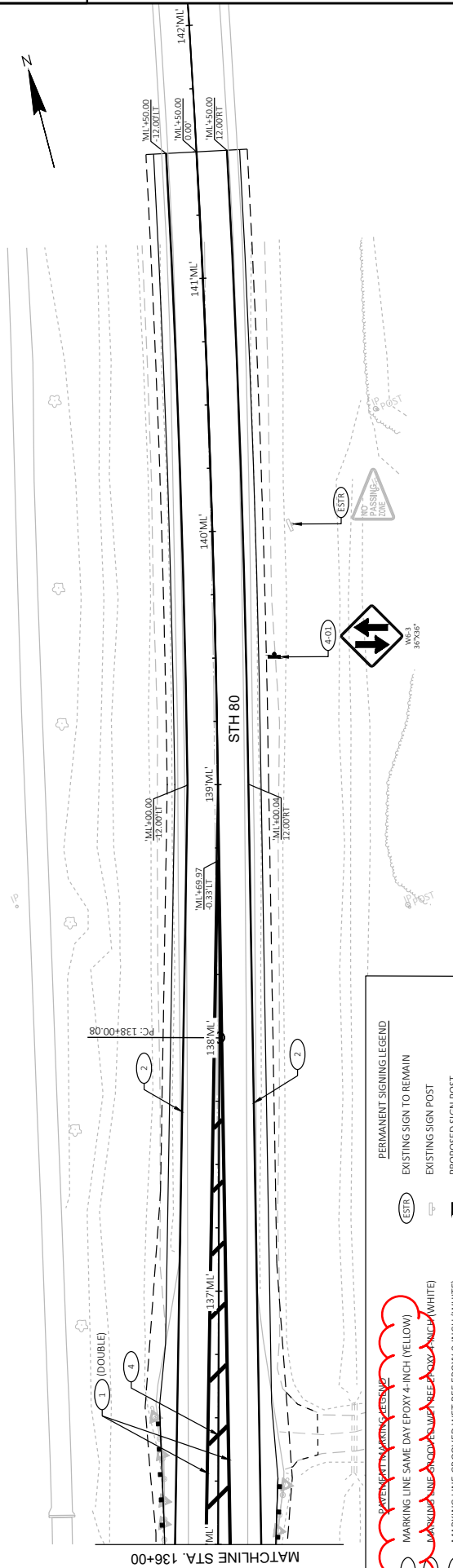
PERMANENT SIGNING LEGEND

1	MARKING LINE SAME DAY EPOXY 4-INCH (YELLOW)	(ESTR)	EXISTING SIGN TO REMAIN
2	MARKING LINE SAME DAY EPOXY 4-INCH (WHITE)	☐	EXISTING SIGN POST
3	MARKING LINE SAME DAY EPOXY 8-INCH (WHITE)	↔	PROPOSED SIGN POST
4	MARKING LINE GROOVED WET REF EPOXY 8-INCH (WHITE)		
5	MARKING DIAGONAL EPOXY 12-INCH (YELLOW) [25' SPACING]		
6	MARKING ARROW EPOXY		
	MARKING WORDS EPOXY		

PAVEMENT MARKING LEGEND

NOTE: SEE SDD PAVEMENT MARKING (TURN LANES) FOR MORE DETAILS.

Addendum No. 01
 ID 1620-05-70
 Revised Sheet 16
 February 2, 2023

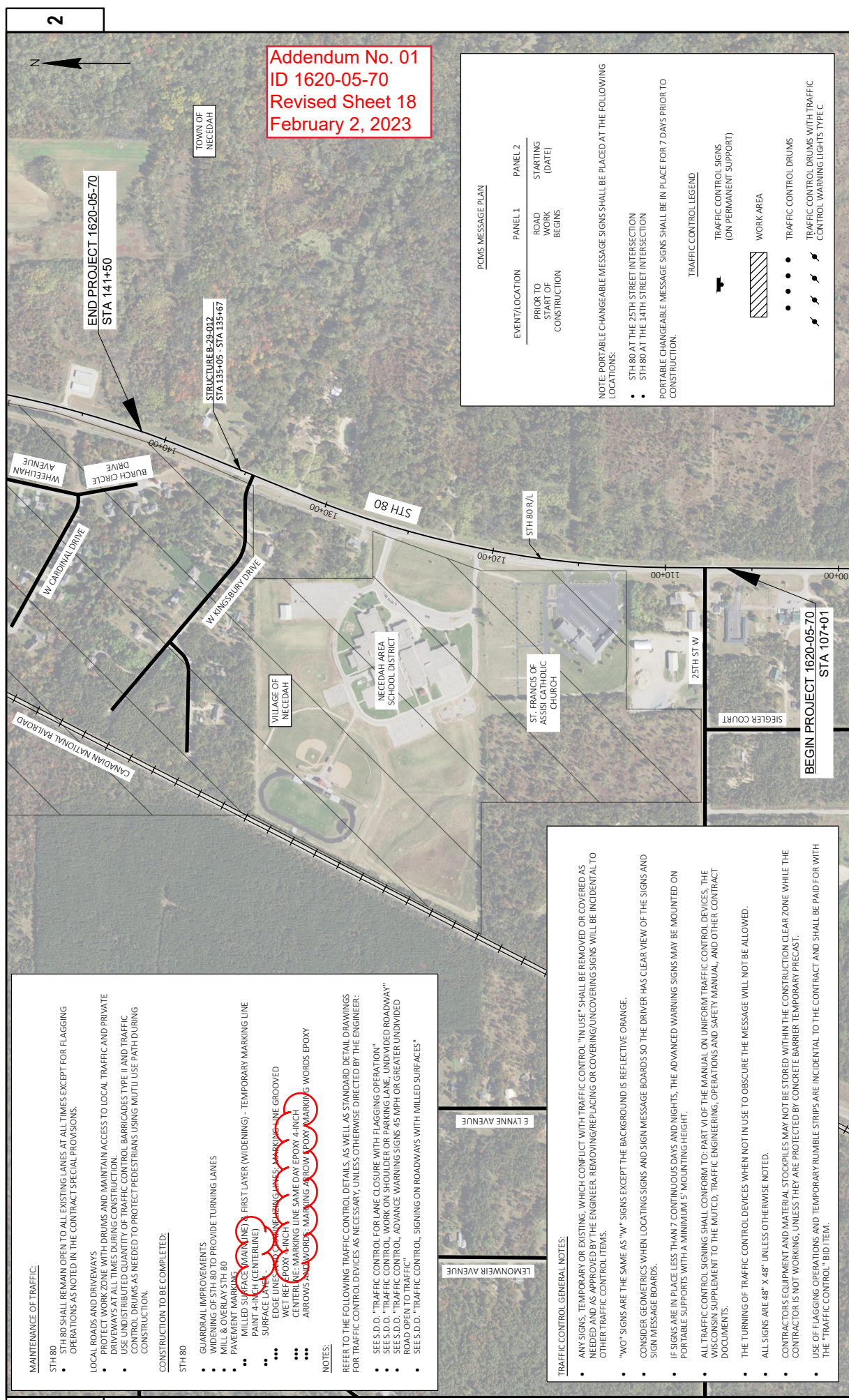


PERMANENT SIGNING LEGEND

1	MARKING LINE SAME DAY EPOXY 4-INCH (YELLOW)	EXISTING SIGN TO REMAIN
2	MARKING LINE GROOVED WET REF EPOXY 8-INCH (WHITE)	EXISTING SIGN POST
3	MARKING LINE GROOVED WET REF EPOXY 12-INCH (YELLOW) (25' SPACING)	PROPOSED SIGN POST
4	MARKING ARROW EPOXY	
5	MARKING WORDS EPOXY	
6		

NOTE: SEE SDD PAVEMENT MARKING (TURN LANES) FOR MORE DETAILS.

Addendum No. 01
 ID 1620-05-70
 Revised Sheet 17
 February 2, 2023



Addendum No. 01
ID 1620-05-70
Revised Sheet 18
February 2, 2023

MAINTENANCE OF TRAFFIC:

- STH 80 SHALL REMAIN OPEN TO ALL EXISTING LANES AT ALL TIMES EXCEPT FOR FLAGGING OPERATIONS AS NOTED IN THE CONTRACT SPECIAL PROVISIONS.
- LOCAL ROADS AND DRIVEWAYS
 - PROTECT WORK ZONE WITH DRUMS AND MAINTAIN ACCESS TO LOCAL TRAFFIC AND PRIVATE DRIVEWAYS AT ALL TIMES DURING CONSTRUCTION.
 - USE UNDISTRIBUTED QUANTITY OF TRAFFIC CONTROL BARRICADES TYPE II AND TRAFFIC CONTROL DRUMS AS NEEDED TO PROTECT PEDESTRIANS USING MULTI USE PATH DURING CONSTRUCTION.

CONSTRUCTION TO BE COMPLETED:

- STH 80
- GUARDRAIL IMPROVEMENTS
- WIDENING OF STH 80 TO PROVIDE TURNING LANES
- MILL & OVERLAY STH 80
- PAVEMENT MARKING
- MILLED SURFACE MAIN LINE 3' FIRST LAYER (WIDENING) - TEMPORARY MARKING LINE PAINT 4-INCH (CENTERLINE)
- SURFACE LANE
- EDGE LINES AND CENTER LINES - MARKING WITH GROOVED
- WET REF EPOXY 4-INCH
- CENTER LINE MARKING LINE SAME DAY EPOXY 4-INCH
- ARROWS AND WORDS MARKING WITH EPOXY WORDS EPOXY

NOTES:

REFER TO THE FOLLOWING TRAFFIC CONTROL DETAILS, AS WELL AS STANDARD DETAIL DRAWINGS FOR TRAFFIC CONTROL DEVICES AS NECESSARY, UNLESS OTHERWISE DIRECTED BY THE ENGINEER:

- SEE S.D.D. "TRAFFIC CONTROL FOR LANE CLOSURE WITH FLAGGING OPERATION"
- SEE S.D.D. "TRAFFIC CONTROL WORK ON SHOULDER OR PARKING LANE, UNDIVIDED ROADWAY"
- SEE S.D.D. "TRAFFIC CONTROL ADVANCE WARNING SIGNS 45 MPH OR GREATER UNDIVIDED ROAD OPEN TO TRAFFIC"
- SEE S.D.D. "TRAFFIC CONTROL SIGNING ON ROADWAYS WITH MILLED SURFACES"

TRAFFIC CONTROL GENERAL NOTES:

- ANY SIGNS, TEMPORARY OR EXISTING, WHICH CONFLICT WITH TRAFFIC CONTROL "IN USE" SHALL BE REMOVED OR COVERED AS NEEDED AND AS APPROVED BY THE ENGINEER. REMOVING/REPLACING OR COVERING/UNCOVERING SIGNS WILL BE INCIDENTAL TO OTHER TRAFFIC CONTROL ITEMS.
- "WO" SIGNS ARE THE SAME AS "W" SIGNS EXCEPT THE BACKGROUND IS REFLECTIVE ORANGE.
- CONSIDER GEOMETRICS WHEN LOCATING SIGNS AND SIGN MESSAGE BOARDS SO THE DRIVER HAS CLEAR VIEW OF THE SIGNS AND SIGN MESSAGE BOARDS.
- IF SIGNS ARE IN PLACE LESS THAN 7 CONTINUOUS DAYS AND NIGHTS, THE ADVANCED WARNING SIGNS MAY BE MOUNTED ON PORTABLE SUPPORTS WITH A MINIMUM 5' MOUNTING HEIGHT.
- ALL TRAFFIC CONTROL SIGNING SHALL CONFORM TO: PART VI OF THE MANUAL ON UNIFORM TRAFFIC CONTROL DEVICES, THE WISCONSIN SUPPLEMENT TO THE MUTCD, TRAFFIC ENGINEERING, OPERATIONS AND SAFETY MANUAL, AND OTHER CONTRACT DOCUMENTS.
- THE TURNING OF TRAFFIC CONTROL DEVICES WHEN NOT IN USE TO OBSCURE THE MESSAGE WILL NOT BE ALLOWED.
- ALL SIGNS ARE 48" X 48" UNLESS OTHERWISE NOTED.
- CONTRACTORS EQUIPMENT AND MATERIAL STOCKPILES MAY NOT BE STORED WITHIN THE CONSTRUCTION CLEAR ZONE WHILE THE CONTRACTOR IS NOT WORKING, UNLESS THEY ARE PROTECTED BY CONCRETE BARRIER, TEMPORARY PRECAST.
- USE OF FLAGGING OPERATIONS AND TEMPORARY RUMBLE STRIPS ARE INCIDENTAL TO THE CONTRACT AND SHALL BE PAID FOR WITH THE "TRAFFIC CONTROL" BID ITEM.

PCMS MESSAGE PLAN

EVENT/LOCATION	PANEL 1	PANEL 2
PRIOR TO ROAD WORK BEGINS	ROAD WORK BEGINS	STARTING (DATE)

NOTICE: PORTABLE CHANGEABLE MESSAGE SIGNS SHALL BE PLACED AT THE FOLLOWING LOCATIONS:

- STH 80 AT THE 25TH STREET INTERSECTION
- STH 80 AT THE 14TH STREET INTERSECTION

PORTABLE CHANGEABLE MESSAGE SIGNS SHALL BE IN PLACE FOR 7 DAYS PRIOR TO CONSTRUCTION.

TRAFFIC CONTROL LEGEND

- TRAFFIC CONTROL SIGNS (ON PERMANENT SUPPORT)
- WORK AREA
- TRAFFIC CONTROL DRUMS
- TRAFFIC CONTROL DRUMS WITH TRAFFIC CONTROL WARNING LIGHTS TYPE C

REMOVING ASPHALTIC SURFACE MILLING

PROJECT CATEGORY	LOCATION	STATION - STATION	SY
1620-05-70	0020		204.0120
	BOP - CHURCH DWY	107+01 - 115+60	3,426
	CHURCH DWY - SCHOOL DWY	115+60 - 126+00	4,344
	SCHOOL DWY - EOP	126+00 - 141+50	5,680
CAT 0020 SUBTOTAL			13,450
PROJECT 1620-05-70 TOTAL			13,450

REMOVING GUARDRAIL

PROJECT CATEGORY	LOCATION	STATION - STATION	LF
1620-05-70	0010		204.0165
	SCHOOL DWY - EOP	126+00 - 141+50	100
CAT 0010 SUBTOTAL			100
PROJECT 1620-05-70 TOTAL			150

Addendum No. 01
ID 1620-05-70
Revised Sheet 26
February 2, 2023

DIVISION	FROM/TO STATION	LOCATION	205.0100 COMMON EXCAVATION		SALVAGED/UNUSABLE PAVEMENT MATERIAL (4)	AVAILABLE MATERIAL (5)	UNEXPANDED FILL	EXPANDED FILL (13) FACTOR 3-25	MASS ORDINATE +/- (14)	WASTE	208.0100 BORROW	COMMENT
			CUT (1)	(2)								
DIVISION 1												
STH 80	107+00.895/141+13.875	STH 80	4,145		740	3,405	622	778	2,628	2,628	0	EXCESS MATERIAL AVAILABLE
DIVISION 1 SUBTOTAL			4,145		740	3,405	622	778	2,628	2,628	0	
GRAND TOTAL			4,145		740	3,405	622	778	2,628	2,628	0	

NOTES:
(1) COMMON EXCAVATION IS THE SUM OF THE CUT AND EBS EXCAVATION COLUMNS. ITEM NUMBER 205.0100
(2) SALVAGED/UNUSABLE PAVEMENT MATERIAL IS INCLUDED IN CUT.
(3) AVAILABLE MATERIAL = CUT - SALVAGED/UNUSABLE PAVEMENT MATERIAL
(4) SALVAGED/UNUSABLE PAVEMENT MATERIAL
(5) AVAILABLE MATERIAL = CUT - SALVAGED/UNUSABLE PAVEMENT MATERIAL
(13) EXPANDED FILL FACTOR = X.6X
DEPENDENT ON SELECTIONS:
OR
OR
OR

EXPANDED FILL = (UNEXPANDED FILL - EXPANDED ROCK - REDUCED MARSH - REDUCED EBS) * FILL FACTOR
EXPANDED FILL = (UNEXPANDED FILL - EXPANDED ROCK - REDUCED MARSH) * FILL FACTOR
EXPANDED FILL = (UNEXPANDED FILL - EXPANDED ROCK) * FILL FACTOR

(14) THE MASS ORDINATE + OR - QTY CALCULATED FOR THE DIVISION. PLUS QUANTITY INDICATES AN EXCESS OF MATERIAL WITHIN THE DIVISION. MINUS INDICATES A SHORTAGE OF MATERIAL WITHIN THE DIVISION.

LANDSCAPING

PROJECT CATEGORY	LOCATION	STATION - STATION	SALVAGED TOPSOIL SY	MULCHING SY	FERTILIZER TYPE B CWT	SEEDING MIXTURE NO. 20 LB	SEED WATER MGAL
1620-05-70	0010						
	BOP - CHURCHDHWY	107+01 - 115+60	727	727	0.26	26	58
	CHURCHDHWY - SCHOOLDHWY	115+60 - 126+00	1,101	1,101	0.37	37	81
	SCHOOLDHWY - EOP	126+00 - 141+50	3,378	3,378	0.94	94	205
	UNDISTRIBUTED		1,304	1,304	0.43	42	87
CAT 0010 SUBTOTAL			6,510	6,510	2	200	430
PROJECT 1620-05-70 TOTAL			6,510	6,510	2	200	430

PROJECT CATEGORY	LOCATION	STATION - STATION	OFFSET	ENERGY ABSORBING TERMINAL EACH
1620-05-70	0010			
	SCHOOLDHWY - EOP	134+17 - 134+67	RT	1
	SCHOOLDHWY - EOP	135+76 - 136+26	RT	1
	SCHOOLDHWY - EOP	136+04 - 136+54	LT	1
	UNDISTRIBUTED			3
CAT 0010 SUBTOTAL				3
PROJECT 1620-05-70 TOTAL				3

FENCE SAFETY

PROJECT CATEGORY	LOCATION	LF
1620-05-70	0010	
		500
CAT 0010 SUBTOTAL		500
PROJECT 1620-05-70 TOTAL		500

MOBILIZATION

PROJECT CATEGORY	LOCATION	EROSION CONTROL EACH	EMERGENCY EROSION CONTROL EACH
1620-05-70	0010		
		6	2
CAT 0010 SUBTOTAL		6	2
PROJECT 1620-05-70 TOTAL		6	2

EROSION CONTROL

PROJECT CATEGORY	LOCATION	STATION - STATION	SILT FENCE LF	SILT FENCE MAINTENANCE LF	EROSION MAT CLASSI TYPE A SY	EROSION MAT CLASSI TYPE B SY	TEMPORARY DITCH CHECKS LF
1620-05-70	0010						
	BOP - CHURCHDHWY	170+01 - 115+60	-	-	1,363	-	36
	CHURCHDHWY - SCHOOLDHWY	115+60 - 126+00	-	-	2,190	-	108
	SCHOOLDHWY - EOP	126+00 - 141+50	-	-	4,783	451	72
	UNDISTRIBUTED		500	500	2,085	119	54
CAT 0010 SUBTOTAL			500	500	10,420	570	270
PROJECT 1620-05-70 TOTAL			500	500	10,420	570	270

Addendum No. 01
 ID 1620-05-70
 Revised Sheet 28
 February 2, 2023

TRAFFIC CONTROL

PROJECT	CATEGORY	LOCATION	# OF DAYS	DRUMS	BARRICADES	LIGHTS	643.0300	643.0715	643.0900	643.1050	SIGNS	PCMS
			DAY	DAY	TYPE II	DAY					DAY	DAY
1620-05-70	0010	STAGE 1	15	1,050	-	156					180	37
		STAGE 2	15	-	-	-					390	37
		UNDISTRIBUTED	15	300	60	84					-	-
PROJECT 1620-05-70 TOTAL				1,350	60	240					570	74

Addendum No. 01
 ID 1620-05-70
 Revised Sheet 29
 February 2, 2023

PERMANENT SIGNING

SIGN#	CODE	SIZE	SIGN	SIZE	SIGN	WXH	IN	SIGN	TYPE II	MOVING SIGNS	REMARKS
										TYPE II	
0010											
1-01	W6-1	2M	36X36	2	9.00	4X6-INCH	16 FT	POSTS WOOD			DIVDED HIGHWAY HEAD SYMBOL
4-01	W6-3	2M	36X36	2	9.00						TWO WAY TRAFFIC SYMBOL
				4	18.00						UNDISTRIBUTED
CAT 0010 SUBTOTAL				4						4	
PROJECT 1620-05-70 TOTAL				4	18.00					4	

TEMPORARY MARKING

PROJECT	CATEGORY	LOCATION	STATION - STATION	LF
1620-05-70	0010	BOP - CHURCH D WY	107+01 - 115+60	1,718
		CHURCH D WY - SCHOOL D WY	115+60 - 126+00	2,080
		SCHOOL D WY - EOP	126+00 - 141+50	3,102
CAT 0010 SUBTOTAL				6,900
PROJECT 1620-05-70 TOTAL				6,900

PAVEMENT MARKING

PROJECT	CATEGORY	LOCATION	STATION - STATION	LF	EACH
1620-05-70	0010	BOP - CHURCH D WY	107+01 - 115+60	1,684	2
		CHURCH D WY - SCHOOL D WY	115+60 - 126+00	1,992	4
		SCHOOL D WY - EOP	126+00 - 141+50	2,795	4
CAT 0010 SUBTOTAL				6,470	10
PROJECT 1620-05-70 TOTAL				6,470	10

PROJECT NO: 1620-05-70

HWY: STH 80

COUNTY: JUNEAU

MISCELLANEOUS QUANTITIES

SHEET

29

E

CONSTRUCTION STAKING

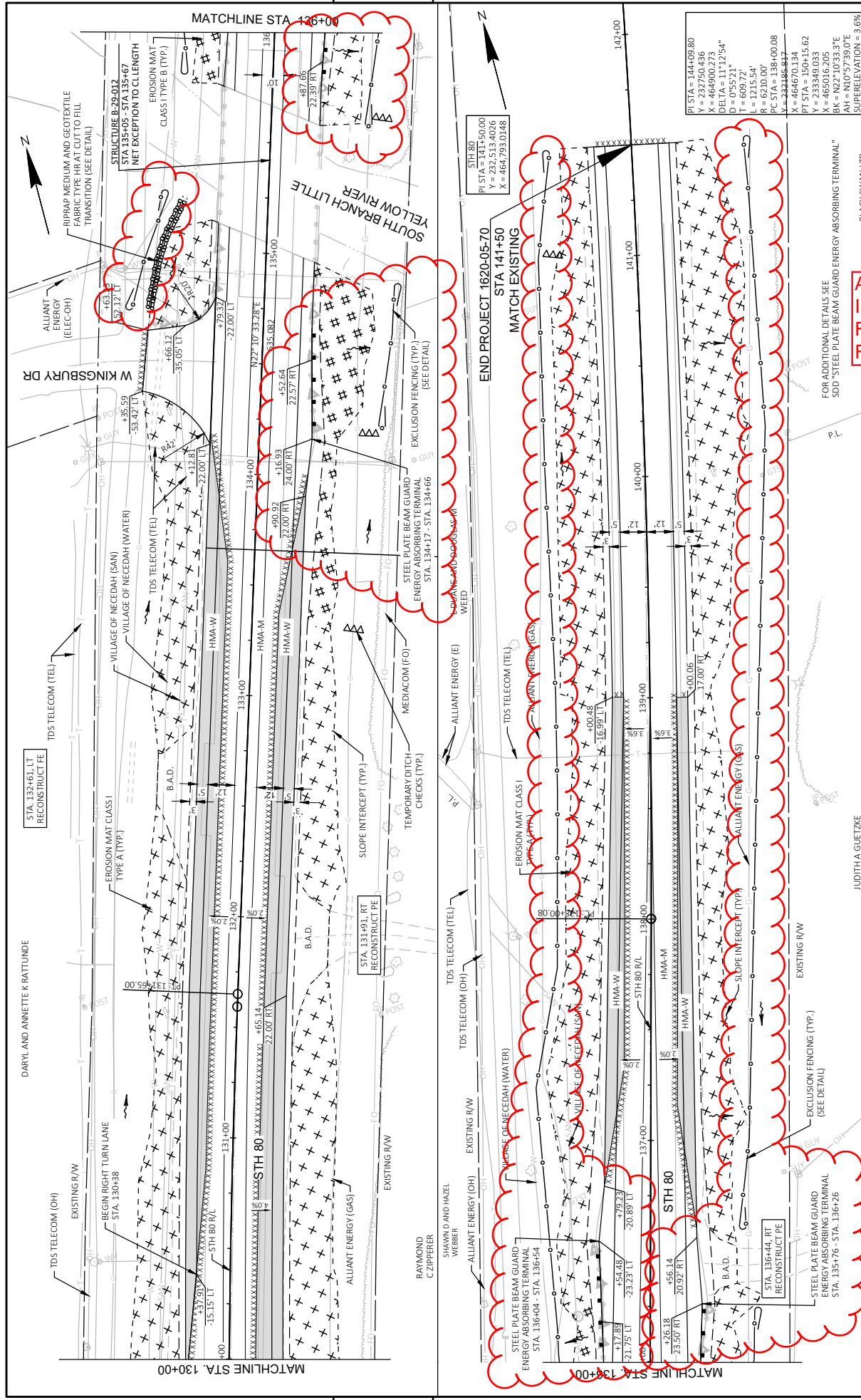
PROJECT CATEGORY	LOCATION	STATION-STATION	SUBGRADE LF	BASE LF	RESURFACING LF	SUPPLEMENTAL CONTROL EACH	SLOPE STAKES LF		
1620-05-70	0010		650.4500	650.5000	650.8000	650.9911	650.9920		
		BOP - CHURCH DWY	107+01 - 115+60	860	860	-	-	860	
		CHURCH DWY - SCHOOL DWY	115+60 - 126+00	1,040	1,040	-	-	1,040	
		SCHOOL DWY - EOP	126+00 - 141+50	1,060	1,550	-	-	1,550	
		UNDISTRIBUTED		-	-	-	1	-	
		CAT 0010 SUB TOTAL		2,960	3,450	0	1	3,450	
		0020							
			BOP - CHURCH DWY	107+01 - 115+60	-	-	860	-	-
			CHURCH DWY - SCHOOL DWY	115+60 - 126+00	-	-	1,040	-	-
			SCHOOL DWY - EOP	126+00 - 141+50	0	0	1,550	0	0
CAT 0020 SUB TOTAL		0	0	3,450	0	0			
PROJECT 1620-05-70 TOTAL		2,960	3,450	3,450	1	3,450			

Addendum No. 01
 ID 1620-05-70
 Revised Sheet 30
 February 2, 2023

PROJECT CATEGORY	LOCATION	STATION-STATION	LF	
1620-05-70	0010			
		KINGSBURY DR - EOP	134+20 - 141+50	1,500
		CAT 0010 SUB TOTAL		1,500
PROJECT 1620-05-70 TOTAL			1,500	

SAVING ASPHALT

PROJECT CATEGORY	LOCATION	STATION-STATION	LF	
1620-05-70	0010		690.0150	
		BOP - CHURCH DWY	107+01 - 115+60	932
		CHURCH DWY - SCHOOL DWY	115+60 - 126+00	1,038
		SCHOOL DWY - EOP	126+00 - 141+50	2,130
		CAT 0010 SUB TOTAL		4,100
PROJECT 1620-05-70 TOTAL			4,100	



Addendum No. 01
ID 1620-05-70
Revised Sheet 34
February 2, 2023

PROJECT NO: 1620-05-70	COUNTY: JUNEAU	PLAN SHEETS / EROSION CONTROL	SHEET: 34
FILE NAME: G:\WIDOTSW\20076000\85180\CIVIL\3D\SHEETS\1620\120L_PD.DWG	FLYBY: KLEINENGINEERING	PLOT NAME:	1 IN=40 FT
LAYOUT NAME: pf_05	PROJECT DATE: 1/18/2023 3:08 PM	DESIGNER: JUDITH A GUETZKE	DATE: 1/18/2023
HWY: STH 80		BLACK SWAN LTD.	

FOR ADDITIONAL DETAILS SEE
SDD "STEEL PLATE BEAM GUARD ENERGY ABSORBING TERMINAL"

PI STA = 144+09.80
Y = 232750.436
X = 466900.273
DE = 055.571
T = 609.72
L = 1215.54
PC STA = 138+00.08
X = 466467.0134
Y = 233349.033
X = 465911.6205
AH = N107.57307E
SUPERELEVATION = 3.6%

STA 132+61, LT RECONSTRUCT FE
STA 131+91, RT RECONSTRUCT PE
STA 136+04 - STA. 136+54
STA 136+44, RT RECONSTRUCT PE
STA 135+76 - STA. 136+26

STA 141+50
STA 141+50
STA 141+50

END PROJECT 1620-05-70
MATCH EXISTING
MATCH EXISTING

MATCHLINE STA. 130+00
MATCHLINE STA. 136+00
MATCHLINE STA. 136+00
MATCHLINE STA. 142+00

WIDOTSW/CADDS SHEET 44

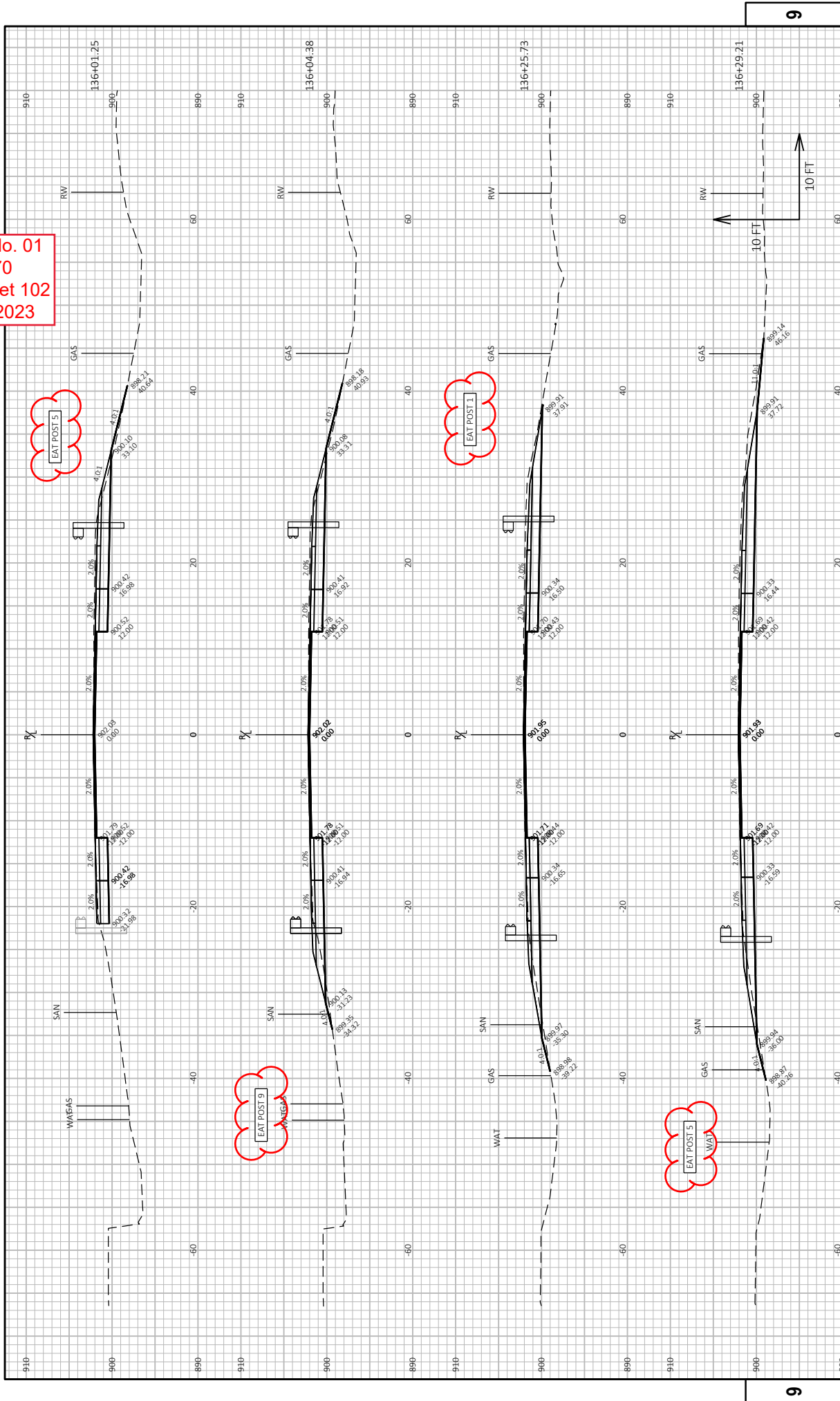


Addendum No. 01
 ID 1620-05-70
 Revised Sheet 100
 February 2, 2023

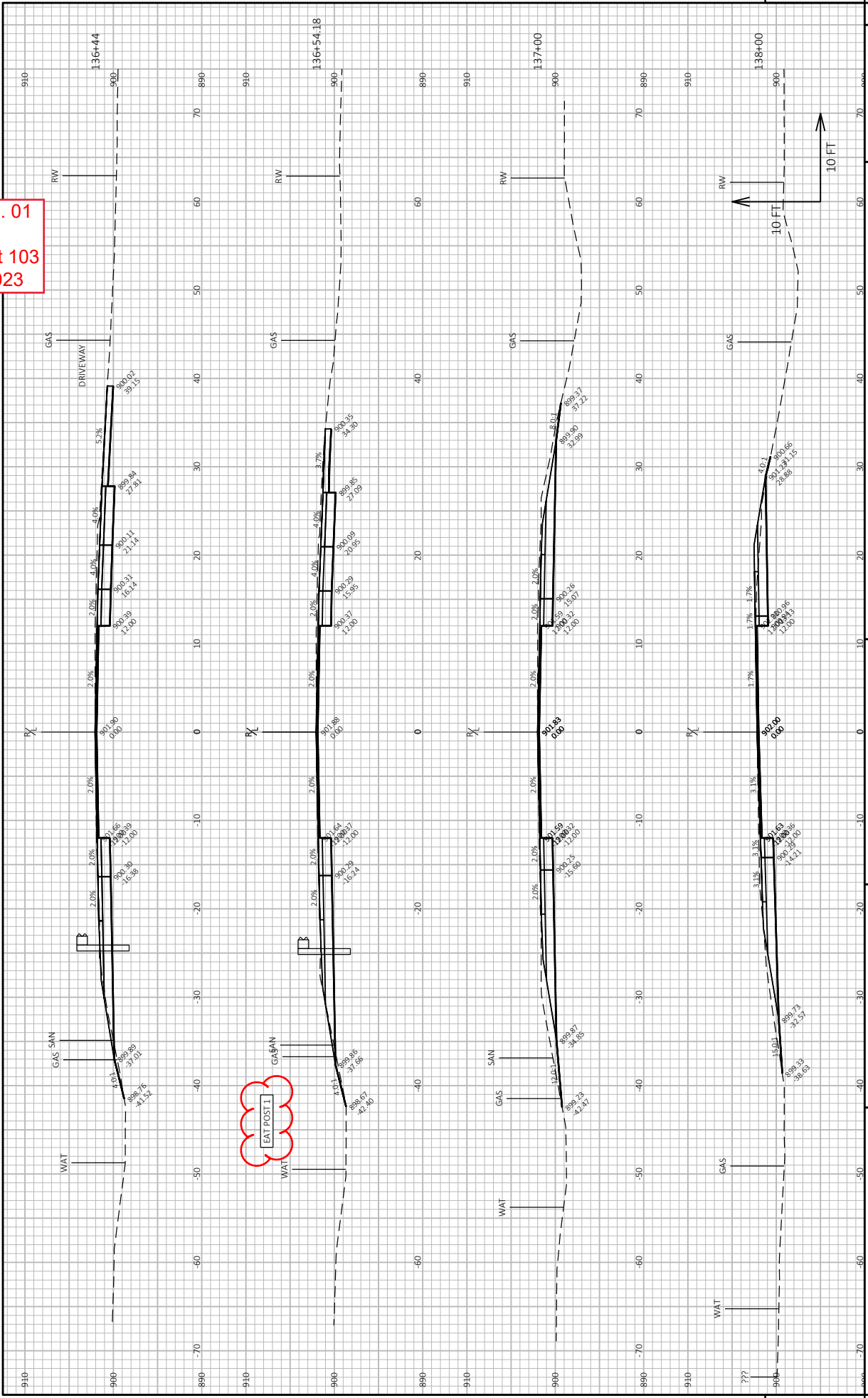
Addendum No. 01
 ID 1620-05-70
 Revised Sheet 101
 February 2, 2023



Addendum No. 01
 ID 1620-05-70
 Revised Sheet 102
 February 2, 2023



Addendum No. 01
 ID 1620-05-70
 Revised Sheet 103
 February 2, 2023





Proposal Schedule of Items

Proposal ID: 20230214003 Project(s): 1620-05-70

Federal ID(s): WISC 2023236

SECTION: 0001 Contract Items

Alt Set ID: Alt Mbr ID:

Proposal Line Number	Item ID Description	Approximate Quantity and Units	Unit Price	Bid Amount
0002	204.0120 Removing Asphaltic Surface Milling	13,450.000 SY	_____.	_____.
0004	204.0165 Removing Guardrail	150.000 LF	_____.	_____.
0006	205.0100 Excavation Common	4,145.000 CY	_____.	_____.
0008	211.0101 Prepare Foundation for Asphaltic Paving (project) 01. 1620-05-70	1.000 EACH	_____.	_____.
0010	213.0100 Finishing Roadway (project) 01. 1620-05-70	1.000 EACH	_____.	_____.
0012	305.0110 Base Aggregate Dense 3/4-Inch	980.000 TON	_____.	_____.
0014	305.0120 Base Aggregate Dense 1 1/4-Inch	5,080.000 TON	_____.	_____.
0016	305.0500 Shaping Shoulders	21.000 STA	_____.	_____.
0018	455.0605 Tack Coat	530.000 GAL	_____.	_____.
0020	460.2000 Incentive Density HMA Pavement	1,550.000 DOL	1.00000	1,550.00
0022	460.6224 HMA Pavement 4 MT 58-28 S	2,490.000 TON	_____.	_____.
0024	465.0105 Asphaltic Surface	160.000 TON	_____.	_____.
0026	465.0120 Asphaltic Surface Driveways and Field Entrances	22.000 TON	_____.	_____.
0028	606.0200 Riprap Medium	6.000 CY	_____.	_____.
0034	616.0700.S Fence Safety	500.000 LF	_____.	_____.
0036	618.0100 Maintenance And Repair of Haul Roads (project) 01. 1620-05-70	1.000 EACH	_____.	_____.



Proposal Schedule of Items

Proposal ID: 20230214003 Project(s): 1620-05-70

Federal ID(s): WISC 2023236

SECTION: 0001 Contract Items

Alt Set ID: Alt Mbr ID:

Proposal Line Number	Item ID Description	Approximate Quantity and Units	Unit Price	Bid Amount
0038	619.1000 Mobilization	1.000 EACH	_____.	_____.
0040	624.0100 Water	60.000 MGAL	_____.	_____.
0042	625.0500 Salvaged Topsoil	6,510.000 SY	_____.	_____.
0044	627.0200 Mulching	6,510.000 SY	_____.	_____.
0046	628.1905 Mobilizations Erosion Control	6.000 EACH	_____.	_____.
0048	628.1910 Mobilizations Emergency Erosion Control	2.000 EACH	_____.	_____.
0050	628.2002 Erosion Mat Class I Type A	10,420.000 SY	_____.	_____.
0052	628.2004 Erosion Mat Class I Type B	570.000 SY	_____.	_____.
0054	628.7504 Temporary Ditch Checks	270.000 LF	_____.	_____.
0056	629.0210 Fertilizer Type B	2.000 CWT	_____.	_____.
0058	630.0120 Seeding Mixture No. 20	200.000 LB	_____.	_____.
0060	630.0500 Seed Water	430.000 MGAL	_____.	_____.
0062	634.0616 Posts Wood 4x6-Inch X 16-FT	4.000 EACH	_____.	_____.
0064	637.2230 Signs Type II Reflective F	18.000 SF	_____.	_____.
0066	638.2102 Moving Signs Type II	4.000 EACH	_____.	_____.
0068	642.5201 Field Office Type C	1.000 EACH	_____.	_____.
0070	643.0300 Traffic Control Drums	1,350.000 DAY	_____.	_____.



Proposal Schedule of Items

Proposal ID: 20230214003 Project(s): 1620-05-70

Federal ID(s): WISC 2023236

SECTION: 0001 Contract Items

Alt Set ID: Alt Mbr ID:

Proposal Line Number	Item ID Description	Approximate Quantity and Units	Unit Price	Bid Amount
0072	643.0410 Traffic Control Barricades Type II	60.000 DAY	_____.	_____.
0074	643.0715 Traffic Control Warning Lights Type C	240.000 DAY	_____.	_____.
0076	643.0900 Traffic Control Signs	570.000 DAY	_____.	_____.
0078	643.1050 Traffic Control Signs PCMS	74.000 DAY	_____.	_____.
0080	643.3105 Temporary Marking Line Paint 4-Inch	6,900.000 LF	_____.	_____.
0082	643.5000 Traffic Control	1.000 EACH	_____.	_____.
0084	645.0120 Geotextile Type HR	12.000 SY	_____.	_____.
0088	646.1040 Marking Line Grooved Wet Ref Epoxy 4-Inch	6,740.000 LF	_____.	_____.
0090	646.3040 Marking Line Grooved Wet Ref Epoxy 8-Inch	1,040.000 LF	_____.	_____.
0092	646.5020 Marking Arrow Epoxy	10.000 EACH	_____.	_____.
0094	646.5120 Marking Word Epoxy	3.000 EACH	_____.	_____.
0096	646.7120 Marking Diagonal Epoxy 12-Inch	860.000 LF	_____.	_____.
0098	650.4500 Construction Staking Subgrade	2,960.000 LF	_____.	_____.
0100	650.5000 Construction Staking Base	3,450.000 LF	_____.	_____.
0102	650.8000 Construction Staking Resurfacing Reference	3,450.000 LF	_____.	_____.
0104	650.9911 Construction Staking Supplemental Control (project) 01. 1620-05-70	1.000 EACH	_____.	_____.



Proposal Schedule of Items

Proposal ID: 20230214003 Project(s): 1620-05-70

Federal ID(s): WISC 2023236

SECTION: 0001 Contract Items

Alt Set ID: Alt Mbr ID:

Proposal Line Number	Item ID Description	Approximate Quantity and Units	Unit Price	Bid Amount
0106	650.9920 Construction Staking Slope Stakes	3,450.000 LF	_____.	_____.
0108	690.0150 Sawing Asphalt	4,100.000 LF	_____.	_____.
0110	740.0440 Incentive IRI Ride	1,306.000 DOL	1.00000	1,306.00
0112	SPV.0090 Special 01. Exclusion Fencing	1,500.000 LF	_____.	_____.
0114	SPV.0180 Special 01. Removing Distress Pavement Milling	500.000 SY	_____.	_____.
0116	614.0370 Steel Plate Beam Guard Energy Absorbing Terminal	3.000 EACH	_____.	_____.
0118	628.1504 Silt Fence	500.000 LF	_____.	_____.
0120	628.1520 Silt Fence Maintenance	500.000 LF	_____.	_____.
0122	646.4520 Marking Line Same Day Epoxy 4-Inch	10,640.000 LF	_____.	_____.

Section: 0001 Total: _____.

Total Bid: _____.

