



# Wisconsin Department of Transportation

## Division of Transportation Systems Development

Bureau of Project Development  
4822 Madison Yards Way, 4<sup>th</sup> Floor South  
Madison, WI 53705

January 31, 2023

Telephone: (608) 266-1631  
Facsimile (FAX): (608) 266-8459

### NOTICE TO ALL CONTRACTORS:

**Proposal #09: 5420-02-72, WISC 2023221**  
**Madison – Lodi**  
**Knutson Drive to STH 19**  
**STH 113**  
**Dane County**

### Letting of February 14, 2023

This is Addendum No. 02, which provides for the following:

#### Schedule of Items:

Revised Bid Item Quantities					
Bid Item	Item Description	Unit	Proposal Total Prior to Addendum	Proposal Quantity Change (-)	Proposal Total After Addendum
204.0195	Removing Concrete Bases	EACH	6	1	7
652.0235	Conduit Rigid Nonmetallic Schedule 40 3 - Inch	LF	928	255	1,183

Added Bid Item Quantities					
Bid Item	Item Description	Unit	Proposal Total Prior to Addendum	Quantity Added	Proposal Total After Addendum
654.0217	Concrete Control Cabinet Base Type 9- Special	EACH	0	1	1

#### Plan Sheets:

Revised Plan Sheets	
Plan Sheet	Plan Sheet Title (brief description of changes to sheet)
96	Include the removal of Existing Concrete Control Cabinet Base Type 9 - Special
99	Include location of New Concrete Control Cabinet Base Type 9 - Special
182	Misc Quantities – Updated Quantities to include Concrete Control Cabinet Base Type 9 - Special
183	Misc Quantities – Updated Quantities to include removal of Concrete Control Cabinet Base Type 9
184	Misc Quantities – Updated the descriptions to follow the plan sheets.

**Schedule of Items**

Attached, dated January 31, 2023, are the revised Schedule of Items Pages 1, 12, and 16.

**Plan Sheets**

The following 8½ x 11-inch sheets are attached and made part of the plans for this proposal:  
Revised: 96, 99, 182, 183, and 184.

The responsibility for notifying potential subcontractors and suppliers of these changes remains with the prime contractor.

Sincerely,

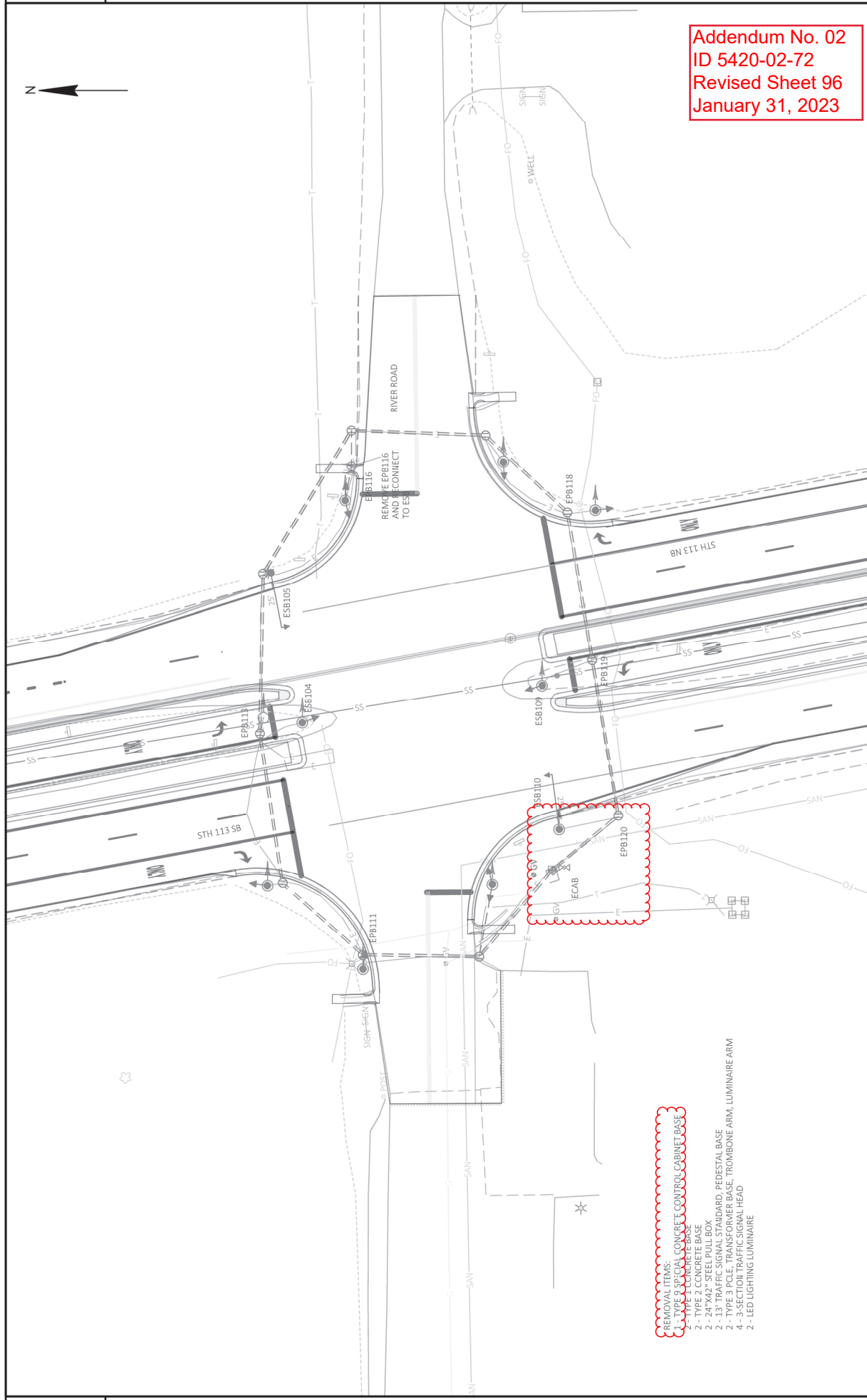
*Mike Coleman*

Proposal Development Specialist  
Proposal Management Section

END OF ADDENDUM



Addendum No. 02  
ID 5420-02-72  
Revised Sheet 96  
January 31, 2023

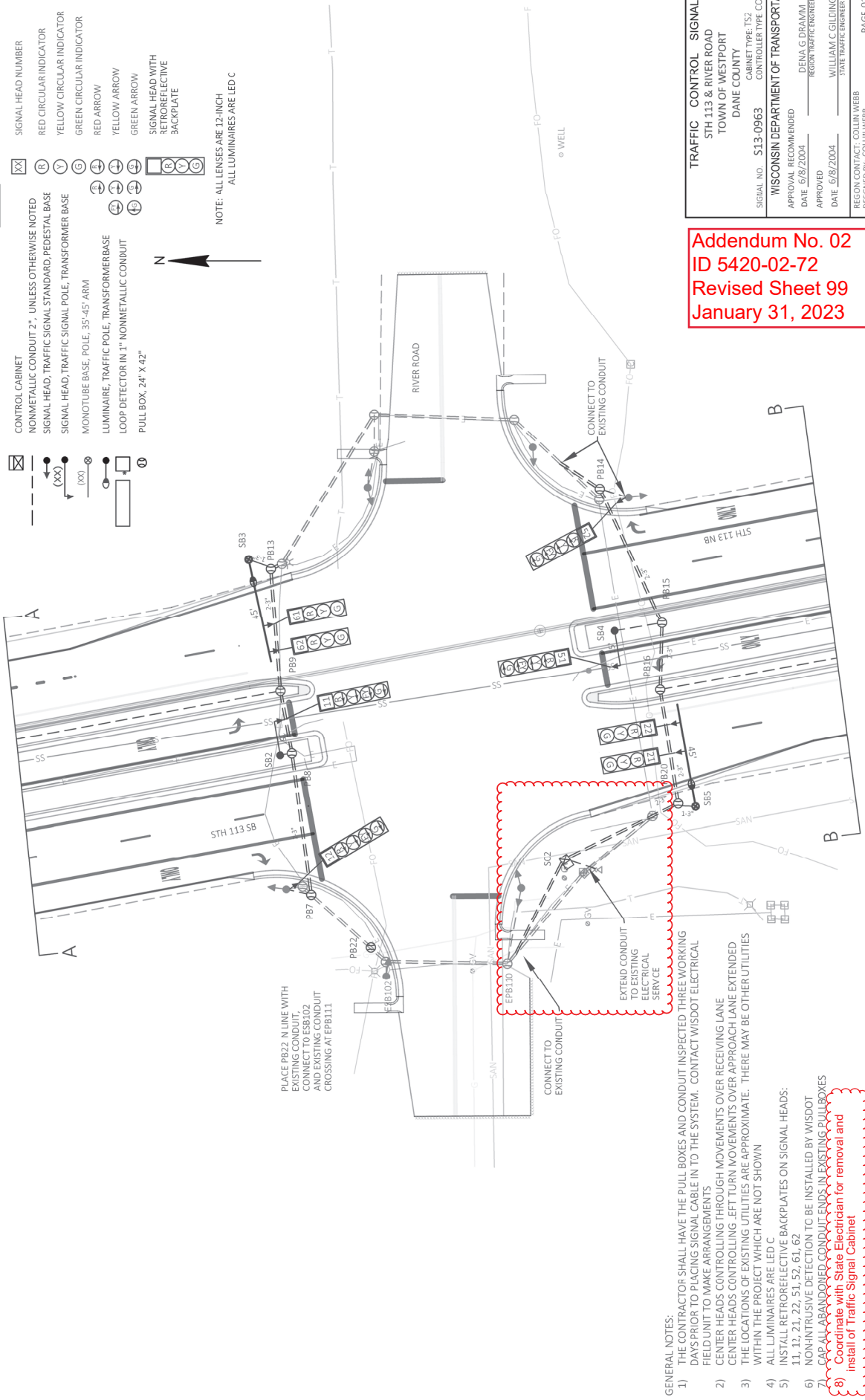


- REMOVAL ITEMS:**
- 1 - 12" SIGNAL CONCRETE CONTROL CABINET BASE
  - 2 - 24"X42" STEEL PULL BOX
  - 2 - TYPE 2 CONCRETE BASE
  - 2 - 13" TRAFFIC SIGNAL STANDARD PEDESTAL BASE
  - 2 - TYPE 3 PCLE TRANSFORMER BASE, TROMBONE ARM, LUMINAIRE ARM
  - 4 - 3-SECTION TRAFFIC SIGNAL HEAD
  - 2 - LED LIGHTING LUMINAIRE

LEGEND

- CONTROL CABINET
- NONMETALLIC CONDUIT 2" UNLESS OTHERWISE NOTED
- SIGNAL HEAD, TRAFFIC SIGNAL STANDARD, PEDESTAL BASE
- SIGNAL HEAD, TRAFFIC SIGNAL POLE, TRANSFORMER BASE
- MONOTUBE BASE, POLE, 35'-45' ARM
- LUMINAIRE, TRAFFIC POLE, TRANSFORMER BASE
- LOOP DETECTOR IN 1" NONMETALLIC CONDUIT
- PULL BOX, 24" X 42"
- SIGNAL HEAD NUMBER
- RED CIRCULAR INDICATOR
- YELLOW CIRCULAR INDICATOR
- GREEN CIRCULAR INDICATOR
- RED ARROW
- YELLOW ARROW
- GREEN ARROW
- SIGNAL HEAD WITH RETROREFLECTIVE BACKPLATE

NOTE: ALL LENSES ARE 12-INCH  
ALL LUMINAIRES ARE LED C



Addendum No. 02  
ID 5420-02-72  
Revised Sheet 99  
January 31, 2023

- GENERAL NOTES:
- 1) THE CONTRACTOR SHALL HAVE THE PULL BOXES AND CONDUIT INSPECTED THREE WORKING DAYS PRIOR TO PLACING SIGNAL CABLE IN TO THE SYSTEM. CONTACT WISDOT ELECTRICAL FIELD UNIT TO MAKE ARRANGEMENTS
  - 2) CENTER HEADS CONTROLLING THROUGH MOVEMENTS OVER RECEIVING LANE
  - 3) CENTER HEADS CONTROLLING LEFT TURN MOVEMENTS OVER APPROACH LANE EXTENDED
  - 4) THE LOCATIONS OF EXISTING UTILITIES ARE APPROXIMATE. THERE MAY BE OTHER UTILITIES WITHIN THE PROJECT WHICH ARE NOT SHOWN
  - 5) ALL LUMINAIRES ARE LED C
  - 6) INSTALL RETROREFLECTIVE BACKPLATES ON SIGNAL HEADS:
  - 7) NON-INTRUSIVE DETECTION TO BE INSTALLED BY WISDOT
  - 8) CAP ALL ABANDONED CONDUIT ENDS IN EXISTING PULL BOXES
  - Coordinate with State Electrician for removal and install of Traffic Signal Cabinet

<b>TRAFFIC CONTROL SIGNAL</b>	
STH 113 & RIVER ROAD TOWN OF WESTPORT DANE COUNTY	
SIGNAL NO. 513-0963	CABINET TYPE: TS2 CONTROLLER TYPE: COBALT
WISCONSIN DEPARTMENT OF TRANSPORTATION	
APPROVAL RECOMMENDED	DENA G DRAMM
DATE 6/8/2004	REGISTRAR/ENGINEER
APPROVED	WILLIAM C GILDING
DATE 6/8/2004	STATE TRAFFIC ENGINEER
REGON CONTACT: COLLIN WEBB	PAGE 01 OF 02
DESIGNED BY: COLLIN WEBB	

Electrical Conduit

Pull Boxes		653.0164 Pull Boxes Non-Conductive 24x42-Inch EACH		652.0225 Conduit Rigid Nonmetallic Schedule 40 2-Inch LF		652.0235 Conduit Rigid Nonmetallic Schedule 40 3-Inch LF		652.0800 Conduit Rigid Loop Detector LF		Description		
Category	Station	Dir	Location	Description	Category	Station	to Station	Category	Station	to Station	Description	
0010	66 + 23	LEFT	93	PB1	0010	69 + 63	to 64 113NB + 25	66	69 + 63	to 64 113NB + 25	LOOP 21 - PB3	
0010	68 + 23	LEFT	91	PB2	0010	69 + 63	to 68 113NB + 23	90	69 + 63	to 68 113NB + 23	LOOP 22 - PB3	
0010	69 + 63	LEFT	89	PB3	0010	57 + 89	to 69 113NB + 63	66	57 + 89	to 69 113NB + 63	LOOP 61 - PB6	
0010	61 + 8	RIGHT	41	PB4	0010	88 + 30	to 63 113NB + 12	90	88 + 30	to 63 113NB + 12	LOOP 62 - PB6	
0010	59 + 5	RIGHT	41	PB5	0010	88 + 30	to 59 113NB + 05	110	88 + 30	to 59 113NB + 05	LOOP 21R - PB12	
0010	57 + 89	RIGHT	37	PB6	0010	76 + 91	to 83 113NB + 31	85	76 + 91	to 83 113NB + 31	LOOP 22R - PB12	
0010	83 + 34	LEFT	100	PB7	0010	66 + 23	to 83 113NB + 31	105	66 + 23	to 83 113NB + 31	LOOP 61R - PB19	
0010	83 + 31	LEFT	38	PB8	0010	66 + 23	to 81 113NB + 69	80	66 + 23	to 81 113NB + 69	LOOP 62R - PB19	
0010	83 + 31	LEFT	10	PB9	0010	68 + 23	to 81 113NB + 63		68 + 23	to 81 113NB + 63	PB1 to Existing PB101	
0010	85 + 31	LEFT	15	PB10	0010	61 + 08	to 83 113NB + 25		61 + 08	to 83 113NB + 25	PB2 to PB3	
0010	88 + 30	LEFT	24	PB11	0010	61 + 08	to 83 113NB + 25		61 + 08	to 83 113NB + 25	PB4 to Existing PB104	
0010	83 + 25	RIGHT	42	PB12	0010	59 + 05	to 57 113NB + 89		59 + 05	to 57 113NB + 89	PB4 to PB5	
0010	81 + 79	RIGHT	50	PB13	0010	83 + 34	to 83 113NB + 31	125	83 + 34	to 83 113NB + 31	PB5 to PB6	
0010	81 + 63	LEFT	12	PB14	0010	83 + 31	to 83 113NB + 31	56	83 + 31	to 83 113NB + 31	PB7 to PB8	
0010	81 + 69	LEFT	40	PB15	0010	83 + 31	to 83 113NB + 25	105	83 + 31	to 83 113NB + 25	PB8 to PB9	
0010	81 + 69	LEFT	40	PB16	0010	81 + 79	to 81 113NB + 63		81 + 79	to 81 113NB + 63	PB9 to PB13	
0010	79 + 54	LEFT	41	PB17	0010	81 + 63	to 81 113NB + 69	129	81 + 63	to 81 113NB + 69	PB14 to PB15	
0010	77 + 82	LEFT	28	PB18	0010	81 + 69	to 81 113NB + 71	58	81 + 69	to 81 113NB + 71	PB15 to PB16	
0010	76 + 91	LEFT	21	PB19	0010	83 + 31	to 85 113NB + 31	101	83 + 31	to 85 113NB + 31	PB16 to PB20	
0010	76 + 91	LEFT	21	PB18	0010	85 + 31	to 87 113NB + 31		85 + 31	to 87 113NB + 31	PB9 to PB10	
0010	81 + 71	LEFT	90	PB20	0010	87 + 31	to 88 113NB + 30	200	87 + 31	to 88 113NB + 30	PB10 to PB11	
0010	62 + 97	LEFT	39	PB21	0010	81 + 69	to 79 113NB + 54	201	81 + 69	to 79 113NB + 54	PB11 to PB12	
0010	83 + 13	LEFT	127	PB22	0010	79 + 54	to 77 113NB + 82	100	79 + 54	to 77 113NB + 82	PB12 to PB17	
0010	83 + 13	LEFT	127	PB22	0010	77 + 82	to 76 113NB + 91	216	77 + 82	to 76 113NB + 91	PB17 to PB18	
0010	83 + 13	LEFT	127	PB22	0010	63 + 06	to 63 113NB + 12	92	63 + 06	to 63 113NB + 12	PB18 to PB19	
0010	83 + 13	LEFT	127	PB22	0010	63 + 31	to 83 113NB + 36	7	63 + 31	to 83 113NB + 36	SBI to Existing PB104	
0010	83 + 13	LEFT	127	PB22	0010	83 + 25	to 83 113NB + 34	5	83 + 25	to 83 113NB + 34	PB8 to SB2	
0010	83 + 13	LEFT	127	PB22	0010	81 + 63	to 81 113NB + 84	11	81 + 63	to 81 113NB + 84	PB13 to SB3	
0010	83 + 13	LEFT	127	PB22	0010	81 + 71	to 81 113NB + 63	22	81 + 71	to 81 113NB + 63	PB15 to SB4	
0010	83 + 13	LEFT	127	PB22	0010	62 + 97	to 62 113NB + 95	9	62 + 97	to 62 113NB + 95	PB20 to SB5	
0010	83 + 13	LEFT	127	PB22	0010	62 + 97	to 62 113NB + 12	105	62 + 97	to 62 113NB + 12	PB21 to Existing PB106	
0010	83 + 13	LEFT	127	PB22	0010	62 + 97	to 62 113NB + 94	161	62 + 97	to 62 113NB + 94	PB21 to Existing PB104	
0010	83 + 13	LEFT	127	PB22	0010	81 + 71	to 82 113NB + 20	3	81 + 71	to 82 113NB + 20	PB22 to SB6	
0010	83 + 13	LEFT	127	PB22	0010	81 + 16	to 82 113NB + 55	120	81 + 16	to 82 113NB + 55	PB20 to SC2	
0010	83 + 13	LEFT	127	PB22	0010	81 + 16	to 82 113NB + 55	135	81 + 16	to 82 113NB + 55	SC2 to Existing PB110	
<b>Total</b>					<b>Total</b>					<b>692</b>	<b>1115</b>	<b>2085</b>

Addendum No. 02  
 ID 5420-02-72  
 Revised Sheet 182  
 January 31, 2023

654.0101 Concrete Bases  
 654.0120 Concrete Bases  
 Type 1 EACH  
 Type 2 EACH  
 Type 10-Specialty-Special EACH

Category	Station	Dir	Location	Description
0010	63 + 6	RIGHT	37	SB1
0010	83 + 36	LEFT	38	SB2
0010	83 + 34	RIGHT	48	SB3
0010	81 + 84	LEFT	11	SB4
0010	81 + 63	LEFT	93	SB5
0010	62 + 94	LEFT	39	SB6
0010	82 + 16	LEFT	105	SC2
<b>Total</b>				

Electrical Items

Category	Station	Dir	Location	Description	Category	Station	to Station	Description	
0010	64 + 34	LEFT	115	650.8501.01 Construction staking Electrical Installations 5420-02-72 CTH M) EACH	0010	64 + 34	to 64 113NB + 12	650.8501.01 Construction staking Electrical Installations 5420-02-72 CTH M) EACH	
0010	64 + 34	LEFT	115	658.5070.01 Signal Mounting Hardware (STH 113 & River Road) EACH	0010	64 + 34	to 64 113NB + 12	658.5070.01 Signal Mounting Hardware (STH 113 & River Road) EACH	
0010	64 + 34	LEFT	115	204.9060.S.01 Removing Traffic Signals (STH 113 & River Road) EACH	0010	64 + 34	to 64 113NB + 12	204.9060.S.01 Removing Traffic Signals (STH 113 & River Road) EACH	
0010	64 + 34	LEFT	115	661.0201.01 Temporary Traffic Signals for Intersections (STH 113 & CTH M) EACH	0010	64 + 34	to 64 113NB + 12	661.0201.01 Temporary Traffic Signals for Intersections (STH 113 & CTH M) EACH	
0010	64 + 34	LEFT	115	659.5000.S Lamp, Ballast, LED, Switch Disposal by Contractor EACH	0010	64 + 34	to 64 113NB + 12	659.5000.S Lamp, Ballast, LED, Switch Disposal by Contractor EACH	
<b>Total</b>					<b>Total</b>				

Poles, Arms & Equipment

Category	Station	Dir	Location	657.0352 Poles Type 10 Spectral	657.0546 Monotube Arms Spectral	657.0815 Luminaire Arms Steel 15-FT EACH	657.0820 Luminaire Arms Steel 10 Pole Clamp 15-FT EACH	657.0100 Pedestal Bases	657.0255 Transformer Bases Breakaway 11 1/2 Inch 13"	657.0420 Traffic Signal Standard 13"	657.0305 Poles Type 2	657.0315 Poles Type 4	657.0585 Arms 15-FT	657.0709 Luminaire Arms Truss Member 4-Inch 12-FT EACH	658.0173 Traffic Signal Face 45 12-Inch EACH	SPV.0060.xx Retroreflective Backplate 45	SPV.0060.xx Retroreflective Backplate 35	658.0500 Pedestrian Push Button	658.0416 Pedestrian Signal Face 16-Inch	659.1125 Luminaires Utility LED C	
0010	63 + 6	RIGHT	37																		
0010	83 + 36	LEFT	38																		
0010	83 + 84	RIGHT	18																		
0010	81 + 62	LEFT	11																		
0010	81 + 42	LEFT	96																		
0010	81 + 68	RIGHT	44																		
0010	62 + 94	LEFT	39																		
<b>Total</b>				<b>2</b>	<b>2</b>	<b>2</b>	<b>2</b>	<b>1</b>	<b>3</b>	<b>1</b>	<b>2</b>	<b>1</b>	<b>2</b>	<b>1</b>	<b>2</b>	<b>4</b>	<b>4</b>	<b>2</b>	<b>1</b>	<b>3</b>	

Addendum No. 02  
 ID 5420-02-72  
 Revised Sheet 183  
 January 31, 2023

Removals

Category	Station	Dir	Location	653.0900 Adjusting Pull Box	653.0905 Removing Pull Box	653.0905 Removing Concrete Bases	653.0905 Adjusting Concrete Bases	SPV.0060.xx Adjusting Concrete Bases	Description
0010	64 113NB + 25	LEFT	106	1					Existing PB101
0010	64 113NB + 28	LEFT	30	1					Existing PB102
0010	64 113NB + 16	RIGHT	38	1					Existing PB103
0010	63 113NB + 12	RIGHT	40	1					Existing PB104
0010	82 113NB + 56	LEFT	144	1					Existing PB110
0010	83 113NB + 7	LEFT	134	1					Existing PB111
0010	83 113NB + 37	LEFT	96		1				Existing PB112
0010	83 113NB + 35	LEFT	27		1				Existing PB113
0010	83 113NB + 20	RIGHT	43	1					Existing PB114
0010	82 113NB + 69	RIGHT	99	1					Existing PB115
0010	82 113NB + 72	RIGHT	84	1					Existing PB116
0010	82 113NB + 10	RIGHT	87	1					Existing PB117
0010	81 113NB + 80	RIGHT	46	1					Existing PB118
0010	81 113NB + 81	LEFT	22	1					Existing PB119
0010	81 113NB + 83	LEFT	93	1					Existing PB120
0010	62 113NB + 94	LEFT	41	1					Existing PB105
0010	62 113NB + 95	LEFT	37						Existing PB106
0010	63 113NB + 6	RIGHT	114				1		Existing SB100
0010	82 113NB + 44	LEFT	114				1		Existing SB101
0010	83 113NB + 9	LEFT	140				1		Existing SB102
0010	83 113NB + 44	LEFT	96				1		Existing SB103
0010	83 113NB + 15	LEFT	26				1		Existing SB104
0010	83 113NB + 17	RIGHT	43				1		Existing SB105
0010	82 113NB + 78	RIGHT	69				1		Existing SB106
0010	82 113NB + 4	RIGHT	74				1		Existing SB107
0010	81 113NB + 68	RIGHT	44				1		Existing SB108
0010	82 113NB + 6	LEFT	29				1		Existing SB109
0010	82 113NB + 10	LEFT	94				1		Existing SB110
0010	83 113NB + 7	LEFT	40				1		Existing SB99
0010	82 113NB + 20	LEFT	105				1		Existing SC2
<b>Total</b>				<b>11</b>	<b>6</b>	<b>7</b>	<b>6</b>	<b>6</b>	

STATE PROJECT NO: 5420-02-72

HWY: STH 113

COUNTY: DANE

MISCELLANEOUS QUANTITIES

SHEET NO: 183

E

FILE NAME:

PLOT DATE:

PLOT BY:

PLOT NAME:

ORIG DATE:

ORIGINATOR: DIST

PLOT SCALE: 1:1

Addendum No. 02  
 ID 5420-02-72  
 Revised Sheet 184  
 January 31, 2023

3

Signal wire

Category	Station	to Station	655.0210 Cable Traffic Signal 3-14 AWG LF	655.0230 Cable Traffic Signal 5-14 AWG LF	655.0240 Cable Traffic Signal 7-14 AWG LF	655.0250 Cable Traffic Signal 9-14 AWG LF	655.0260 Cable Traffic Signal 12-14 AWG LF	655.0305 Cable Type UF 2-12 AWG LF	655.0515 Electrical Wire Traffic Signal 10 AWG LF	655.0610 Electrical Wire Traffic Lighting 12 AWG LF	655.0700 Loop Detector Lead in Cable LF	655.0800 Loop Detector Wire LF	Description	
0010	069 113NB + 63												274 PB3	LOOP 21
0010	069 113NB + 63											370 PB3	274 PB3	LOOP 22
0010	057 113NB + 89											370 PB6	274 PB6	LOOP 61
0010	057 113NB + 89											450 PB6	370 PB6	LOOP 62
0010	088 113NB + 30											430 PB12	450 PB12	LOOP 21R
0010	088 113NB + 30											430 PB12	350 PB12	LOOP 22R
0010	076 113NB + 91											430 PB19	430 PB19	LOOP 61R
0010	076 113NB + 91											330 PB19	330 PB19	LOOP 62R
0010	63 113NB + 6									150				SB1 - Up Pole
0010	83 113NB + 36									159				SB2 - Up Pole
0010	83 113NB + 34									159				SB3 - Up Pole
0010	81 113NB + 84									159				SB4 - Up Pole
0010	81 113NB + 63													SB5 - Up Pole
0010	83 113NB + 44													Existing SB103 - Up Pole
0010	81 113NB + 68													Existing SB108 - Up Pole
0010	62 113NB + 94													SB6 - Up Pole
0010	064 113NB + 34	to 063 113NB + 6				323								Existing SC1 to SB1
0010	064 113NB + 34	to 062 113NB + 94					241							Existing SC1 to SB6
0010	082 113NB + 16	to 083 113NB + 36												SC2 to SB2
0010	082 113NB + 16	to 083 113NB + 34												SC2 to SB3
0010	082 113NB + 16	to 081 113NB + 84												SC2 to SB4
0010	082 113NB + 16	to 081 113NB + 63												SC2 to SB5
0010	064 113NB + 34	to 063 113NB + 6												Existing SC1 to SB1
0010	082 113NB + 16	to 083 113NB + 34												SC2 to SB3
0010	082 113NB + 16	to 081 113NB + 83												SC2 to SB5
0010	064 113NB + 34	to 063 113NB + 6												Existing SC1 to SB1
0010	064 113NB + 34	to 062 113NB + 94												Existing SC1 to SB6
0010	064 113NB + 34	to 069 113NB + 63												Existing SC1 to PB3
0010	064 113NB + 34	to 057 113NB + 89												Existing SC1 to PB6
0010	064 113NB + 34	to 057 113NB + 89												Existing SC1 to PB6
0010	082 113NB + 16	to 088 113NB + 30												Existing SC2 to PB12
0010	082 113NB + 16	to 088 113NB + 30												SC2 to PB12
0010	082 113NB + 16	to 076 113NB + 91												SC2 to PB19
0010	063 113NB + 12	to 063 113NB + 6												Existing PB104 to SB1
0010	083 113NB + 36	to 083 113NB + 34							21					SC2 to SB2
0010	083 113NB + 36	to 083 113NB + 34							411					Grounding Conductor
0010	083 113NB + 34	to 081 113NB + 79							135					Grounding Conductor
0010	081 113NB + 79	to 081 113NB + 84							450					Grounding Conductor
0010	081 113NB + 84	to 081 113NB + 63							111					Grounding Conductor
0010	081 113NB + 63	to 082 113NB + 16							149					Grounding Conductor
0010	082 113NB + 63	to 082 113NB + 16							92					Grounding Conductor
0010	064 113NB + 34	to 062 113NB + 94							241					Grounding Conductor
0010	082 113NB + 16	to 083 113NB + 44												SC2 to Existing SB103
0010	082 113NB + 16	to 082 113NB + 78												SC2 to Existing SB106
0010	082 113NB + 16	to 082 113NB + 4												SC2 to Existing SB107
0010	082 113NB + 16	to 081 113NB + 68												SC2 to Existing SB108
0010	081 113NB + 63	to 082 113NB + 4												SB5 to Existing SB107
<b>Total</b>			<b>15</b>	<b>464</b>	<b>923</b>	<b>1140</b>	<b>712</b>	<b>1050</b>	<b>1610</b>	<b>468</b>	<b>6456</b>	<b>2848</b>		

3



Proposal Schedule of Items

Proposal ID: 20230214009 Project(s): 5420-02-72

Federal ID(s): WISC 2023221

SECTION: 0001 Contract Items

Alt Set ID: Alt Mbr ID:

Proposal Line Number	Item ID Description	Approximate Quantity and Units	Unit Price	Bid Amount
0002	203.0100 Removing Small Pipe Culverts	4.000 EACH	_____.	_____.
0004	203.0220 Removing Structure (structure) 01. B-13-233	1.000 EACH	_____.	_____.
0006	204.0100 Removing Concrete Pavement	100.000 SY	_____.	_____.
0008	204.0150 Removing Curb & Gutter	1,930.000 LF	_____.	_____.
0010	204.0165 Removing Guardrail	1,140.000 LF	_____.	_____.
0012	204.0195 Removing Concrete Bases	7.000 EACH	_____.	_____.
0014	204.0210 Removing Manholes	2.000 EACH	_____.	_____.
0016	204.0220 Removing Inlets	2.000 EACH	_____.	_____.
0018	204.0245 Removing Storm Sewer (size) 01. 18-Inch	782.000 LF	_____.	_____.
0020	204.9060.S Removing (item description) 01. Traffic Signals (STH 113 & CTH M)	1.000 EACH	_____.	_____.
0022	204.9060.S Removing (item description) 02. Traffic Signals (STH 113 & River Road)	1.000 EACH	_____.	_____.
0024	205.0100 Excavation Common	145,700.000 CY	_____.	_____.
0026	213.0100 Finishing Roadway (project) 01. 5420-02-72	1.000 EACH	_____.	_____.
0028	305.0110 Base Aggregate Dense 3/4-Inch	7,485.000 TON	_____.	_____.
0030	305.0120 Base Aggregate Dense 1 1/4-Inch	118,600.000 TON	_____.	_____.





Proposal Schedule of Items

Proposal ID: 20230214009 Project(s): 5420-02-72

Federal ID(s): WISC 2023221

SECTION: 0001 Contract Items

Alt Set ID: Alt Mbr ID:

Proposal Line Number	Item ID Description	Approximate Quantity and Units	Unit Price	Bid Amount
0352	652.0225 Conduit Rigid Nonmetallic Schedule 40 2-Inch	3,722.000 LF	_____.	_____.
0354	652.0235 Conduit Rigid Nonmetallic Schedule 40 3-Inch	1,183.000 LF	_____.	_____.
0356	652.0325 Conduit Rigid Nonmetallic Schedule 80 2-Inch	391.000 LF	_____.	_____.
0358	652.0800 Conduit Loop Detector	692.000 LF	_____.	_____.
0360	653.0164 Pull Boxes Non-Conductive 24x42-Inch	44.000 EACH	_____.	_____.
0362	653.0900 Adjusting Pull Boxes	11.000 EACH	_____.	_____.
0364	653.0905 Removing Pull Boxes	6.000 EACH	_____.	_____.
0366	654.0101 Concrete Bases Type 1	1.000 EACH	_____.	_____.
0368	654.0102 Concrete Bases Type 2	3.000 EACH	_____.	_____.
0370	654.0105 Concrete Bases Type 5	14.000 EACH	_____.	_____.
0372	654.0120 Concrete Bases Type 10-Special	2.000 EACH	_____.	_____.
0374	654.0230 Concrete Control Cabinet Bases Type L30	1.000 EACH	_____.	_____.
0376	655.0210 Cable Traffic Signal 3-14 AWG	15.000 LF	_____.	_____.
0378	655.0230 Cable Traffic Signal 5-14 AWG	464.000 LF	_____.	_____.
0380	655.0240 Cable Traffic Signal 7-14 AWG	923.000 LF	_____.	_____.
0382	655.0250 Cable Traffic Signal 9-14 AWG	1,140.000 LF	_____.	_____.



Proposal Schedule of Items

Proposal ID: 20230214009 Project(s): 5420-02-72

Federal ID(s): WISC 2023221

SECTION: 0001 Contract Items

Alt Set ID: Alt Mbr ID:

Proposal Line Number	Item ID Description	Approximate Quantity and Units	Unit Price	Bid Amount
0472	654.0217 Concrete Control Cabinet Bases Type 9 Special	1.000 EACH	_____.	_____.
		<b>Section: 0001</b>	<b>Total:</b>	_____.
			<b>Total Bid:</b>	_____.