



Wisconsin Department of Transportation

January 30, 2023

**Division of Transportation Systems
Development**

Bureau of Project Development
4822 Madison Yards Way, 4th Floor South
Madison, WI 53705

Telephone: (608) 266-1631
Facsimile (FAX): (608) 266-8459

NOTICE TO ALL CONTRACTORS:

**Proposal #31: 4685-29-60, WISC 2023242
Appleton, STH 441
USH 10 – North Junction IH 41
STH 441
Outagamie County**

Letting of February 14, 2023

This is Addendum No. 01, which provides for the following:

Plan Sheets:

Revised Plan Sheets	
Plan Sheet	Plan Sheet Title (brief description of changes to sheet)
211	Added notes to the SDD

The responsibility for notifying potential subcontractors and suppliers of these changes remains with the prime contractor.

Sincerely,

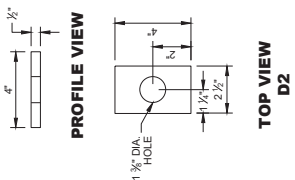
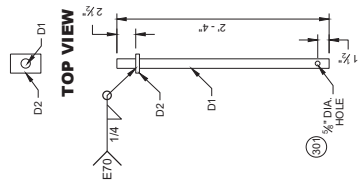
Mike Coleman

Proposal Development Specialist
Proposal Management Section

END OF ADDENDUM

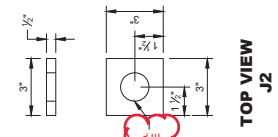
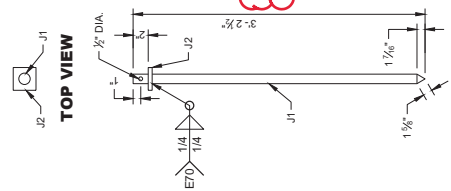
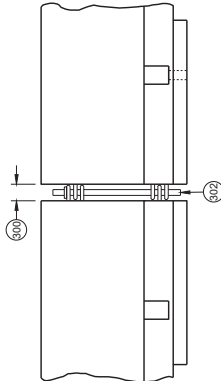
GENERAL NOTES

- 300 SET WITH 3/4" WOOD BLOCK.
- 301 HOLE IS OPTIONAL.
- 302 CONNECTOR PIN ASSEMBLY.
- 303 CONCRETE PAVEMENT, APPROACH SLAB, OR DECK.
- 304 CONCRETE DECK.
- 305 DO NOT USE ON CONCRETE BRIDGE DECK WITH ASPHALT OVERLAY OR CONCRETE PAVEMENT WITH ASPHALT OVERLAY.
- 306 MINIMUM OF 2" OF ASPHALT.
- 307 ASPHALT ANCHOR PIN ASSEMBLY
- 308 IF DRILLING A PILOT HOLE, THE MAX DIA. OF THE PILOT HOLE IS 3/4".

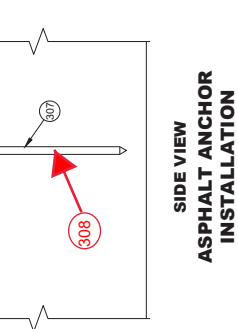
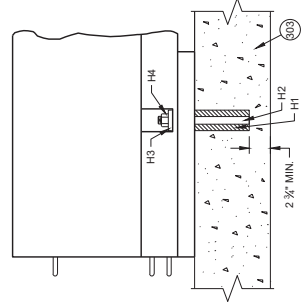
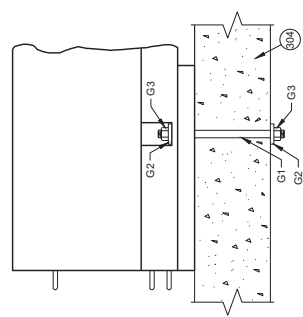


CONNECTOR PIN ASSEMBLY

CONNECTING TEMPORARY BARRIER SECTIONS



ASPHALT ANCHOR PIN ASSEMBLY



Addendum No. 01
ID 4685-29-60
Revised Sheet 211
January 30, 2023

**CONCRETE BARRIER
TEMPORARY PRECAST,
12' - 6"**

STATE OF WISCONSIN
DEPARTMENT OF TRANSPORTATION