



Wisconsin Department of Transportation

January 30, 2023

Division of Transportation Systems Development

Bureau of Project Development
4822 Madison Yards Way, 4th Floor South
Madison, WI 53705

Telephone: (608) 266-1631
Facsimile (FAX): (608) 266-8459

NOTICE TO ALL CONTRACTORS:

Proposal #34: 1009-46-64
Regionwide Concrete Overlays
Marathon County Bridge Overlays
STH 107
Marathon County

6360-05-70
V Marathon City, Main Street
North Street to Marathon Avenue
STH 107
Marathon County

Letting of February 14, 2023

This is Addendum No. 01, which provides for the following:

Plan Sheets:

Revised Plan Sheets	
Plan Sheet	Plan Sheet Title (brief description of changes to sheet)
29	Added notes to the SDD

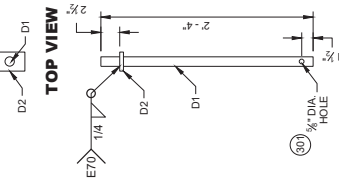
The responsibility for notifying potential subcontractors and suppliers of these changes remains with the prime contractor.

Sincerely,

Mike Coleman

Proposal Development Specialist
Proposal Management Section

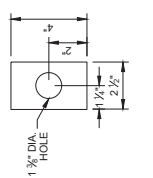
END OF ADDENDUM



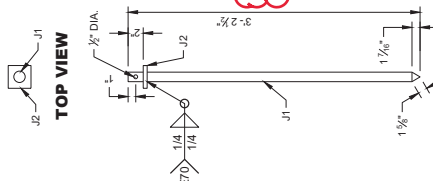
**PROFILE VIEW
CONNECTOR PIN
ASSEMBLY**



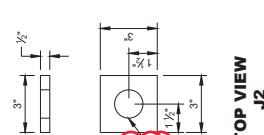
PROFILE VIEW



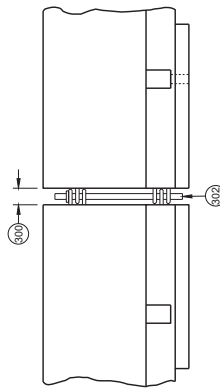
**TOP VIEW
D2**



**PROFILE VIEW
ASPHALT ANCHOR PIN
ASSEMBLY**



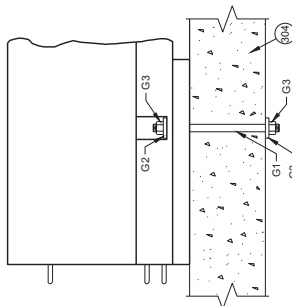
**TOP VIEW
J2**



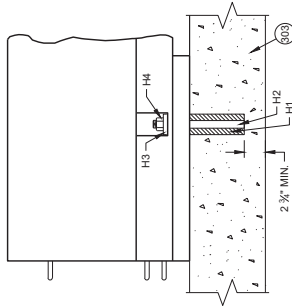
**CONNECTING TEMPORARY
BARRIER SECTIONS**

GENERAL NOTES

- 309 SET WITH 3/4" WOOD BLOCK.
- 307 HOLE IS OPTIONAL.
- 302 CONNECTOR PIN ASSEMBLY.
- 303 CONCRETE PAVEMENT, APPROACH SLAB, OR DECK.
- 304 CONCRETE DECK.
- 305 DO NOT USE ON CONCRETE BRIDGE DECK WITH ASPHALT OVERLAY OR CONCRETE PAVEMENT WITH ASPHALT OVERLAY.
- 306 MINIMUM OF 2" OF ASPHALT.
- 307 ASPHALT ANCHOR PIN ASSEMBLY
- 308 IF DRILLING A PILOT HOLE, THE MAX DIA. OF THE PILOT HOLE IS 3/4".



**SIDE VIEW
THROUGH BOLT ANCHOR
INSTALLATION**



**SIDE VIEW
ADHESIVE ANCHOR
INSTALLATION**

Addendum No. 01
ID 1009-46-64
Revised Sheet 29
January 30, 2023

**CONCRETE BARRIER
TEMPORARY PRECAST,
12' - 6"**

STATE OF WISCONSIN
DEPARTMENT OF TRANSPORTATION