



# Wisconsin Department of Transportation

---

January 30, 2023

**Division of Transportation Systems  
Development**

Bureau of Project Development  
4822 Madison Yards Way, 4<sup>th</sup> Floor South  
Madison, WI 53705

Telephone: (608) 266-1631  
Facsimile (FAX): (608) 266-8459

## NOTICE TO ALL CONTRACTORS:

**Proposal #45: 7620-00-70  
Elmwood – STH 64  
STH 29 to USH 12  
STH 128  
St. Croix County**

## Letting of February 14, 2023

This is Addendum No. 01, which provides for the following:

### Plan Sheets:

Revised Plan Sheets	
Plan Sheet	Plan Sheet Title (brief description of changes to sheet)
80	Added notes to the SDD

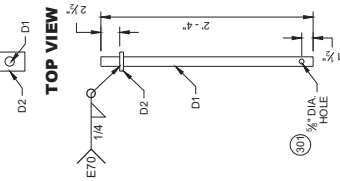
The responsibility for notifying potential subcontractors and suppliers of these changes remains with the prime contractor.

Sincerely,

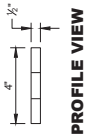
*Mike Coleman*

Proposal Development Specialist  
Proposal Management Section

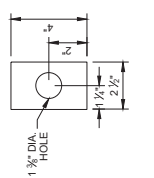
END OF ADDENDUM



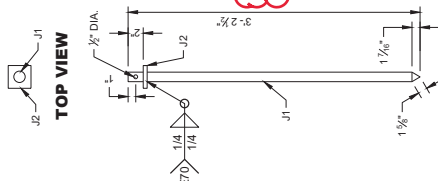
**PROFILE VIEW  
CONNECTOR PIN  
ASSEMBLY**



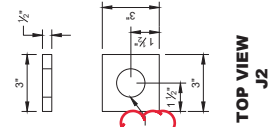
**PROFILE VIEW**



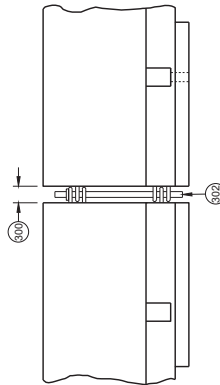
**TOP VIEW  
D2**



**PROFILE VIEW  
ASPHALT ANCHOR PIN  
ASSEMBLY**

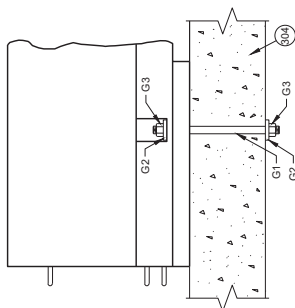


**TOP VIEW  
J2**

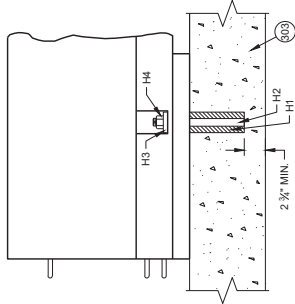


**CONNECTING TEMPORARY  
BARRIER SECTIONS**

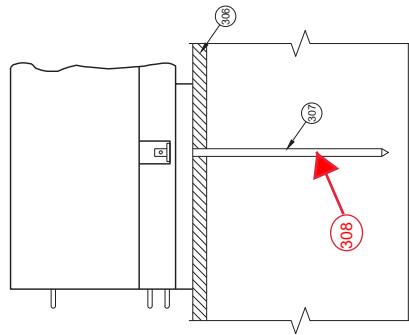
- GENERAL NOTES**
- 302 SET WITH 3/4" WOOD BLOCK.
  - 303 HOLE IS OPTIONAL.
  - 304 CONNECTOR PIN ASSEMBLY.
  - 305 CONCRETE PAVEMENT, APPROACH SLAB, OR DECK.
  - 306 CONCRETE DECK.
  - 307 DO NOT USE ON CONCRETE BRIDGE DECK WITH ASPHALT OVERLAY OR CONCRETE PAVEMENT WITH ASPHALT OVERLAY.
  - 308 MINIMUM OF 2" OF ASPHALT.
  - 309 ASPHALT ANCHOR PIN ASSEMBLY.
  - 308 IF DRILLING A PILOT HOLE, THE MAX DIA. OF THE PILOT HOLE IS 3/4".



**SIDE VIEW  
THROUGH BOLT ANCHOR  
INSTALLATION**



**SIDE VIEW  
ADHESIVE ANCHOR  
INSTALLATION**



**SIDE VIEW  
ASPHALT ANCHOR  
INSTALLATION**

Addendum No. 01  
ID 7620-00-70  
Revised Sheet 80  
January 30, 2023

**CONCRETE BARRIER  
TEMPORARY PRECAST,  
12' - 6"**

STATE OF WISCONSIN  
DEPARTMENT OF TRANSPORTATION