



Wisconsin Department of Transportation

March 9, 2023

Division of Transportation Systems Development
Bureau of Project Development
4822 Madison Yards Way, 4th Floor South
Madison, WI 53705

Telephone: (608) 266-1631
Facsimile (FAX): (608) 266-8459

NOTICE TO ALL CONTRACTORS:

Proposal #12: 1228-22-70, WISC 2023278
IH 43 North South Freeway
Brown Street to Capitol Drive
IH 43
Milwaukee County

1228-22-80
IH 43 North South Freeway
Center St Bridge B-40-208
Local Street
Milwaukee County

1228-22-81
IH 43 North South Freeway
Center B-40-208, Locust B-40-207
Local Street
Milwaukee County

1228-22-87
IH 43 North South
Wright St Bridge B-40-209
Local Street
Milwaukee County

Letting of March 14, 2023

This is Addendum No. 02, which provides for the following:

Special Provisions:

Revised Special Provisions	
Article No.	Description
8	Utilities

Added Special Provisions	
Article No.	Description
191	Fiber Optic Patch Panel 12-Count ST, Item SPV.0060.0315
192	Field Office Special, Item SPV.0135.0001

Deleted Special Provisions	
Article No.	Description
37	QMP Subgrade
102	Field Facilities Office Space, Item SPV.0060.0003
158	Fiber Optic Patch Panel, 12-Count, ST, Item SPV.0060.0308

Schedule of Items:

Revised Bid Item Quantities					
Bid Item	Item Description	Unit	Proposal Total Prior to Addendum	Proposal Quantity Change (-)	Proposal Total After Addendum
678.0300	Fiber Optic Splice	EACH	404	8	412
SPV.0060.0313	SFP	EACH	16	8	24

Added Bid Item Quantities					
Bid Item	Item Description	Unit	Proposal Total Prior to Addendum	Quantity Added	Proposal Total After Addendum
SPV.0060.0315	Fiber Optic Patch Panel 12-Count ST	EACH	0	2	2
SPV.0135.0001	Field Office Special	MONTH	0	18	18

Deleted Bid Item Quantities					
Bid Item	Item Description	Unit	Proposal Total Prior to Addendum	Proposal Quantity Change (-)	Proposal Total After Addendum
SPV.0060.0003	Field Facilities Office Space	EACH	1	-1	0
SPV.0060.0308	Fiber Optic Patch Panel 8-Count ST	EACH	2	-2	0

Plan Sheets:

Revised Plan Sheets	
Plan Sheet	Plan Sheet Title (brief description of changes to sheet)
412	TRAFFIC SIGNAL COMMUNICATRION PLAN (modified reference to Fiber Optic Patch Panel 12-Count ST)
814	MISCELLANEAOUS QUANTITES INTERCONNECT (modified item description for Fiber Optic Patch Panel 12-Count ST and modified associated quantities)

The responsibility for notifying potential subcontractors and suppliers of these changes remains with the prime contractor.

Sincerely,

Mike Coleman

Proposal Development Specialist
Proposal Management Section

ADDENDUM NO. 02

1228-22-70/80/81/87

March 9, 2023

Special Provisions

8. Utilities.

PROJECT 1228-22-70

Add the following after AT&T Wisconsin and before City of Milwaukee – Milwaukee Water Works:

City of Milwaukee – Communications has existing communication cables within the city underground conduit (CUC).

- Locust Street Bridge
 - 1 75-pair copper cable
 - 1 50-pair copper cable
 - 1 24-strand fiber optic cable
- Burleigh Street Bridge
 - 2 25-pair copper cables

All circuits on the copper cables have been re-routed outside the project area. These cables have been discontinued in place and can be removed by the contractor during the existing CUC removal. The fiber optic cable on the Locust St bridge has active circuits that will be relocated outside the project area by April 28th, 2023. The fiber optics on the structure will be discontinued in place. Contractor to remove remaining cables discontinued in the CUC as part of the CUC removal noted in the plans. New CUC to be installed as shown on plans. Upon completion City of Milwaukee to be notified. Contact David Henke at David.henke@milwaukee.gov or at 414-286-3248 (office phone) or 414-708-3248 (cell phone). City is responsible for reinstallation of copper and fiber cables.

37. DELETED

102. DELETED

158. DELETED

191. Fiber Optic Patch Panel, 12-Count, ST, Item SPV.0060.0315.

A Description

Furnish and install a 12-count fiber optic patch panel according to the following standards.

B Materials

Furnish a combination Fiber Optic Patch Panel according to the following standards:

- 12 single mode fiber optic strands
- Factory terminated or ST connectors on panel end
- Bare, unterminated fiber strands on non-panel end
- Loose tube cable

- Cable length as indicated specified in the plan
- Patch panel must be designed and tested for 1,000 re-matings with less than 0.20 dB change
- Patch panel housing material must be ABS plastic

C Construction

Construction shall be according to standard spec 678.

Have a certified fiber optic technician perform work for fiber optic terminations, splicing and testing. Have a certified fiber optic technician supervise all fiber optic cable installation. Test the panel and demonstrate that all equipment is operational to the inspector. Ensure termination does not exceed attenuation limits specified in standard spec 678.3.4.

D Measurement

The department will measure Fiber Optic Patch Panel, 8-Count, ST by each individual unit, acceptably completed.

E Payment

The department will pay for measured quantities at the contract unit price under the following bid item:

ITEM NUMBER	DESCRIPTION	UNIT
SPV.0060.0315	Fiber Optic Patch Panel, 12-Count, ST	EACH

Payment is full compensation for materials and installation necessary to complete the work.

192. Field Office Special, Item SPV.0135.0001.

A Description

This special provision describes furnishing, equipping, and maintaining field office facilities.

B Materials

Obtain engineer approval before providing an existing office building, or an existing building converted to office-type use. Ensure that the building meets all applicable health, fire, and building codes and standards. Provide first aid kits, fire extinguishers, and all other supplies required to meet all applicable health, fire, and building codes and standards. The field office must be located less than one mile from the project limits with all floor space located on the first floor.

Provide; maintain in clean good working condition; and stock lavatory with sanitary supplies, including a sufficient supply of soap; hand sanitizer; toilet paper; and paper towels. The on-site sanitary facilities must meet Federal, State, and local health department requirements at all times.

Equip these facilities with suitable natural and light emitting diode (LED)DSL lighting. Also provide adequate heating and air conditioning equipment and fuel necessary to maintain a temperature range from 68 F to 80 F during the hours occupied.

Equip:

- Doors and windows with locks.
- Exterior doors with dead bolt locks.
- Windows with exterior screens to allow adequate ventilation.

Provide at least 1,200 square feet interior useable floor space, including shared spaces, such as plan review areas, conference rooms, storage areas, meeting areas, hallways, and restrooms. Provide a minimum 150 square feet storage room with a lockable door. Obtain engineer's approval of a suitably sized, open meeting area, including tables and folding chairs to accommodate regularly scheduled meetings of 20 people. Include a wireless ceiling mounted 1080-pixel liquid crystal display projector with a minimum of 3,000 lumens, 6' x 8'

projector screen, a 4' x 8' white board with dry erase markers and erasers, and phone jack with phone service.

Provide 8 workstations with a lockable desk and drawers. Workstations shall be a minimum 36 SF. Provide 3 private rooms, additionally equipped with a four-shelf bookcase, a large lockable metal storage cabinet, and a 48" x 36" whiteboard with dry-erase markers and erasers. Supply the interior doors to these rooms with locksets. Rooms must be a minimum of 100 SF.

Provide one ergonomically correct office chair in working condition, with, at a minimum, the following features, for each workstation:

- Five-legged base with casters.
- High backrest.
- Seat adjustable from 15 inches to 22 inches from the floor with a "seamless waterfall, rounded front edge.

For all work stations, provide unlimited high-speed internet service for exclusive department use via cable or DSL connection with a modem/router and capable of supporting cloud enabled file sharing, voice over internet protocol (VoIP), video conferencing, and web-based applications. Ensure that system meets the following:

- Includes a wireless network for the field office.
- Can accommodate IPSec based VPN products.
- Has a broadband bandwidth range with minimum connection speed of 100 Mbps + 1/2 Mbps per user download and 20 Mbps upload. Coordinate network setup at the leased office with the WisDOT network team..

Provide and install into the field office telephone exchanges with local and long-distance service or VoIP phone network. The voice exchanges are to be configured so that the incoming calls for any voice exchange utilize an open exchange. The telephones and the communication services are for the sole use of the department staff.

Provide one new Windows 10 compliant, high-capacity color printer/photocopier/scanner capable of printing and copying up to 11" x 17" paper, with the ability to perform duplexing, sorting, stapling, and multiple sheet auto feeding, with a built-in scanner with the capability to scan black and white and color up to 11" x 17" at a minimum of 1200dpi, and with a direct or field office wireless network connection, as approved by the engineer.

Provide and maintain an adequate supply of bottled drinking water. Provide a refrigerator with a minimum 18 cubic foot capacity, including a freezer. Provide a microwave oven with a minimum 1.1 cubic foot capacity, a minimum of 1000 watts, and a removable glass turntable.

Maintain the field office equipment and provide supplies for the photocopiers as requested by the engineer.

Provide for the professional cleaning of the field office during regular business hours once per week.

Provide carpet runners at all entrances. Clean weekly and replace as necessary or as directed by the engineer.

Provide clearly marked recycling and waste receptacles within the field office, and separate recycling and waste dumpsters near the field office. Cover outdoor containers to keep out rain, and snow. Provide regularly scheduled recycling and waste pick-up.

Include an adjacent, no-fee, lighted parking lot large enough to accommodate 15 vehicles, as approved by the engineer. Maintain the parking lot and egress, including snow removal.

C Construction

Do not combine field offices, or combine them with, or attach them to, any buildings used by the contractor, unless the engineer allows in writing. The contractor may furnish, if the contract allows, the field offices jointly in cooperation with other contractors on designated projects.

Do not begin construction operations requiring the use of the field offices by the department until the required field offices are approved by the engineer, furnished, fully equipped, and made ready for use as the engineer directs.

The field office shall remain available for department until the engineer approves its closure. These field facilities are for the sole use of the department and upon contract completion remain the contractor's property.

D Measurement

The department will measure Field Office Special by the month, or partial month where applicable, acceptably completed.

E Payment

The department will pay for measured quantities at the contract unit price under the following bid item:

ITEM NUMBER	DESCRIPTION	UNIT
SPV.0135.0001	Field Office Special	MONTH

Payment is full compensation for providing, equipping, securing, cleaning and maintaining the facility and associated parking lot; for telecommunications equipment, installation, and service fees; and for providing all incidentals, including bottled water, refrigerator/freezer, microwave, utilities, fuel, safety, ventilation, toilet facilities, and office supplies as required, either independently or jointly, for the time specified in section C. The department will pay for long-distance telephone usage fees incurred by department staff.

sef-642-005 (20180627)

Schedule of Items

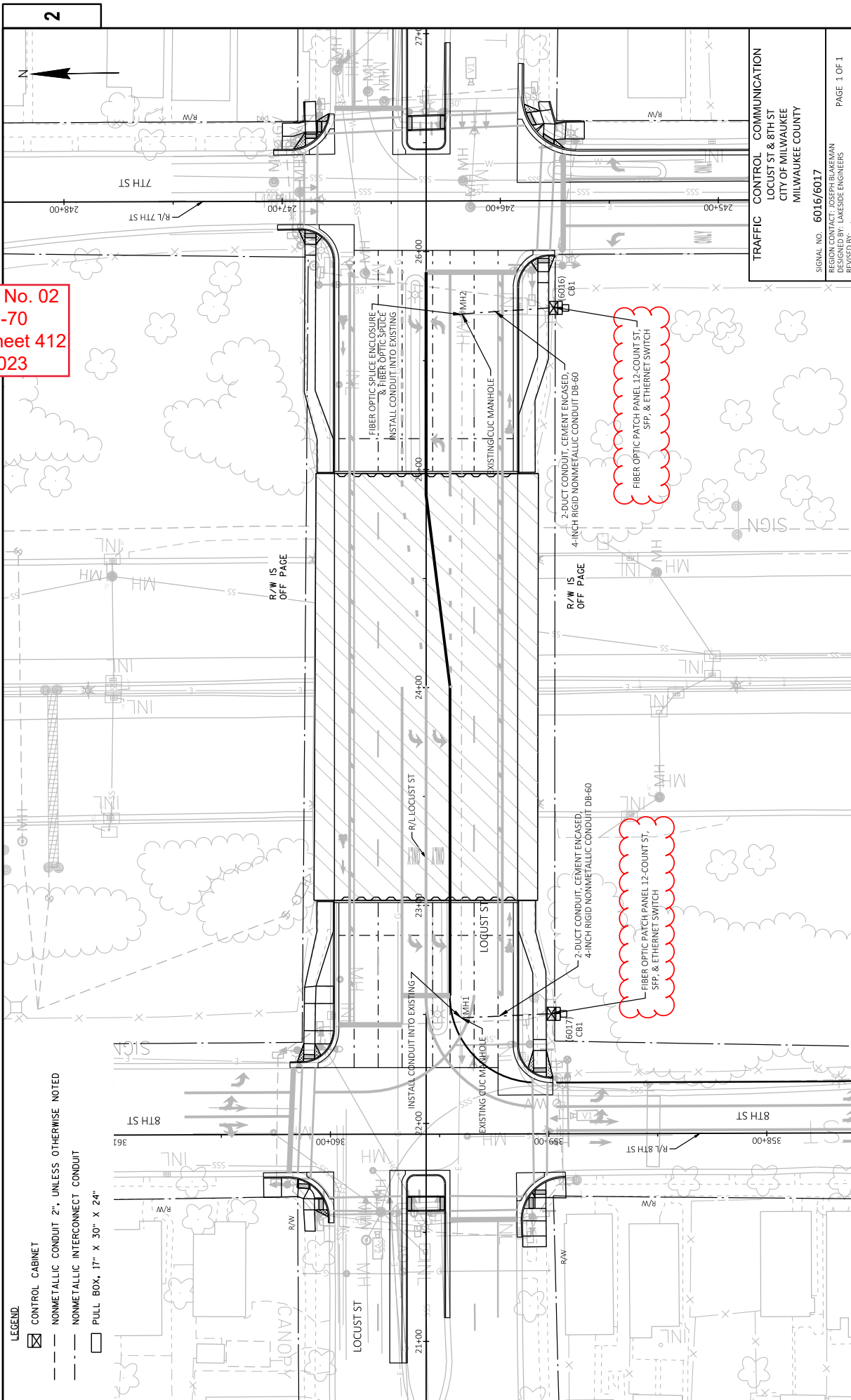
Attached, dated March 9, 2023, are the revised Schedule of Items Pages 31-41.

Plan Sheets

The following 8½ x 11-inch sheets are attached and made part of the plans for this proposal:
Revised: 412 & 814.

END OF ADDENDUM

Addendum No. 02
 ID 1228-22-70
 Revised Sheet 412
 March 9, 2023



- LEGEND:**
- ☒ CONTROL CABINET
 - NONMETALLIC CONDUIT 2", UNLESS OTHERWISE NOTED
 - - - NONMETALLIC INTERCONNECT CONDUIT
 - PULL BOX, 17" X 30" X 24"

TRAFFIC SIGNAL COMMUNICATION PLAN
 COUNTY: MILWAUKEE
 HWY: IH 43
 PROJECT NO: 1228-22-70
 FILE NAME: L:\DESIGN PROJECTS\1228-22-001-43 BROWN TO CARTOILD. ROADWAY\CAD\DWG\SHEETS\PLAN\0429L_SP.DWG
 LAYOUT NAME: 0429L_SP

PROJECT NO: 1228-22-70	COUNTY: MILWAUKEE	TRAFFIC SIGNAL COMMUNICATION PLAN	SHEET	412	E
FILE NAME: L:\DESIGN PROJECTS\1228-22-001-43 BROWN TO CARTOILD. ROADWAY\CAD\DWG\SHEETS\PLAN\0429L_SP.DWG	LAYOUT NAME: 0429L_SP	DATE: 3/6/2023 11:37 AM	DESIGNED BY: TOM BUBBITZ	DESIGNED BY: TOM BUBBITZ	DESIGNED BY: TOM BUBBITZ
PROJECT NO: 1228-22-70	COUNTY: MILWAUKEE	TRAFFIC SIGNAL COMMUNICATION PLAN	SHEET	412	E
FILE NAME: L:\DESIGN PROJECTS\1228-22-001-43 BROWN TO CARTOILD. ROADWAY\CAD\DWG\SHEETS\PLAN\0429L_SP.DWG	LAYOUT NAME: 0429L_SP	DATE: 3/6/2023 11:37 AM	DESIGNED BY: TOM BUBBITZ	DESIGNED BY: TOM BUBBITZ	DESIGNED BY: TOM BUBBITZ
PROJECT NO: 1228-22-70	COUNTY: MILWAUKEE	TRAFFIC SIGNAL COMMUNICATION PLAN	SHEET	412	E
FILE NAME: L:\DESIGN PROJECTS\1228-22-001-43 BROWN TO CARTOILD. ROADWAY\CAD\DWG\SHEETS\PLAN\0429L_SP.DWG	LAYOUT NAME: 0429L_SP	DATE: 3/6/2023 11:37 AM	DESIGNED BY: TOM BUBBITZ	DESIGNED BY: TOM BUBBITZ	DESIGNED BY: TOM BUBBITZ

REGION CONTACT: JOSEPH BLANKEN
 DESIGNED BY: LAKESIDE ENGINEERS
 SIGNAL NO: 6016/6017
 PAGE 1 OF 1

TRAFFIC CONTROL COMMUNICATION
 LOCUST ST & 8TH ST
 CITY OF MILWAUKEE
 MILWAUKEE COUNTY

PLLOT SCALE: 1 IN=40 FT
 PLLOT NAME: 1 IN=40 FT

PLLOT DATE: 3/6/2023 11:37 AM

PLLOT NAME: TOM BUBBITZ

PLLOT NAME: TOM BUBBITZ

PLLOT NAME: TOM BUBBITZ

INTERCONNECT

ALL ITEMS ARE CATEGORY 1500
UNLESS OTHERWISE NOTED

3

CONDUIT

FROM	TO	LF	652.0700.S 2-DUCT CONDUIT CEMENT ENCASED 4-INCH RIGID NONMETALLIC CONDUIT DB-60	INSTALL CONDUIT INTO EXISTING ITEM	EACH
CB1 (6016)	MH1	45			1
CB1 (6017)	MH2	45			1
CB1 (6085)	MH3	74			1
CB1 (6086)	MH4	30			1
TOTALS					4

COMMUNICATION

LOCATION	FIELD SYSTEM INTEGRATOR EACH	COMMUNICATIONS SYSTEMS TESTING EACH	ITS DOCUMENTATION EACH
TRAFFIC SIGNAL COMMUNICATION	1	1	1
TOTALS	1	1	1

3

NETWORK

FROM	ETHERNET SWITCH EACH	CELLULAR MODEM EACH	WIRELESS ANTENNA EACH	SPV.0060.0313 SFP EACH
CB1 (6016)	1	--	--	12
CB1 (6017)	1	--	--	12
CB1 (6085)	1	1	1	--
CB1 (6086)	1	1	1	--
TOTALS	4	2	2	24

FIBER OPTIC

LOCATION	SPV.0060.0314 FIBER OPTIC SPICE ENCLOSURE EACH	678.0300 FIBER OPTIC SPICE EACH	SPV.0060.0315 FIBER OPTIC PATCH PANEL 12-COUNT ST EACH
CB1 (6016)	--	--	1
CB1 (6017)	--	--	1
MH2	1	24	--
TOTALS	1	24	2

FIBER OPTIC PATCH PANEL 8-COUNT ST FIBER OPTIC CABLE LENGTH

FROM	TO	LF
MH2	CB1 (6016)	150
MH2	CB1 (6017)	500

Addendum No. 02
ID 1228-20-70
Revised Sheet 814
March 9, 2023

PROJECT NO: 1228-22-70

HWY: IH 43

COUNTY: MILWAUKEE

MISCELLANEOUS QUANTITIES

SHEET NO: 814

E

FILE NAME :

PLOT DATE : 3/02/2023 11:50 AM

PLOT BY :

PLOT NAME : 03201.mxd

PLOT SCALE : 1.000000:1.000000

WISDOT/CADDIS SHEET 42



Proposal Schedule of Items

Proposal ID: 20230314012 Project(s): 1228-22-70, 1228-22-80, 1228-22-81, 1228-22-87

Federal ID(s): WISC 2023278, N/A, N/A, N/A

SECTION: 0001

Contract Items

Alt Set ID:

Alt Mbr ID:

Proposal Line Number	Item ID Description	Approximate Quantity and Units	Unit Price	Bid Amount
0896	678.0100.S Install Overhead Freeway DMS Full Matrix	1.000 EACH	_____.	_____.
0898	678.0200 Fiber Optic Splice Enclosure	11.000 EACH	_____.	_____.
0900	678.0300 Fiber Optic Splice	412.000 EACH	_____.	_____.
0902	678.0400 Fiber Optic Termination	48.000 EACH	_____.	_____.
0904	678.0501 Communication System Testing	2.000 EACH	_____.	_____.
0906	678.0600 Install Ethernet Switches	5.000 EACH	_____.	_____.
0908	690.0150 Sawing Asphalt	3,899.000 LF	_____.	_____.
0910	690.0250 Sawing Concrete	51,457.000 LF	_____.	_____.
0912	715.0603 Incentive Strength Concrete Barrier	9,110.000 DOL	1.00000	9,110.00
0914	715.0720 Incentive Compressive Strength Concrete Pavement	1,070.000 DOL	1.00000	1,070.00
0916	740.0440 Incentive IRI Ride	30,900.000 DOL	1.00000	30,900.00
0918	ASP.1.1PA On-the-Job Training Pre-Apprentice at \$5.00/HR	5,000.000 HRS	5.00000	25,000.00
0920	ASP.1.1PAA On-the-Job Training Pre-Apprentice with Advancement at \$10.00/HR	1,500.000 HRS	10.00000	15,000.00
0922	ASP.1T0A On-the-Job Training Apprentice at \$5.00/HR	6,300.000 HRS	5.00000	31,500.00
0924	ASP.1T0G On-the-Job Training Graduate at \$5.00/HR	14,400.000 HRS	5.00000	72,000.00



Proposal Schedule of Items

Proposal ID: 20230314012 Project(s): 1228-22-70, 1228-22-80, 1228-22-81, 1228-22-87

Federal ID(s): WISC 2023278, N/A, N/A, N/A

SECTION: 0001

Contract Items

Alt Set ID:

Alt Mbr ID:

Proposal Line Number	Item ID Description	Approximate Quantity and Units	Unit Price	Bid Amount
0926	SPV.0055 Special 0001. Core Pilot Project; Incentive Density PWL HMA Pavement	15,310.000 DOL	1.00000	15,310.00
0928	SPV.0055 Special 0002. Core Pilot Project; Incentive Air Voids HMA Pavement	71,410.000 DOL	1.00000	71,410.00
0930	SPV.0055 Special 0003. Core Pilot Project; Incentive Density HMA Pavement Longitudinal Joints	6,800.000 DOL	1.00000	6,800.00
0932	SPV.0060 Special 0001. Baseline CPM Progress Schedule	1.000 EACH	_____.	_____.
0934	SPV.0060 Special 0002. Monthly CPM Progress Schedule Updates	36.000 EACH	_____.	_____.
0938	SPV.0060 Special 0004. Fastening Sewer Access Covers	160.000 EACH	_____.	_____.
0940	SPV.0060 Special 0009. Mobilizations Emergency Pavement Repair	10.000 EACH	_____.	_____.
0942	SPV.0060 Special 0010. Survey Project 1228-22-70	1.000 EACH	_____.	_____.
0944	SPV.0060 Special 0011. Utility Line Opening (ULO)	20.000 EACH	_____.	_____.
0946	SPV.0060 Special 0012. Emergency Response to Traffic Incident Involving Conc Barrier Temporary	40.000 EACH	_____.	_____.
0948	SPV.0060 Special 0013. Emergency Response to Traffic Incident Involving Crash Cushions	10.000 EACH	_____.	_____.
0954	SPV.0060 Special 0016. Traffic Control Close-Open Freeway Entrance Ramp	60.000 EACH	_____.	_____.
0956	SPV.0060 Special 0017. Traffic Control Full Freeway Closure	50.000 EACH	_____.	_____.



Proposal Schedule of Items

Proposal ID: 20230314012 Project(s): 1228-22-70, 1228-22-80, 1228-22-81, 1228-22-87

Federal ID(s): WISC 2023278, N/A, N/A, N/A

SECTION: 0001 Contract Items

Alt Set ID: Alt Mbr ID:

Proposal Line Number	Item ID Description	Approximate Quantity and Units	Unit Price	Bid Amount
0958	SPV.0060 Special 0018. Migratory Bird Nest Inspection B-40-207	1.000 EACH	_____.	_____.
0960	SPV.0060 Special 0050. Pipe Connection to Existing Structure	11.000 EACH	_____.	_____.
0962	SPV.0060 Special 0080. Adjusting Water Valve Boxes	6.000 EACH	_____.	_____.
0964	SPV.0060 Special 0081. Adjusting Water Manholes	6.000 EACH	_____.	_____.
0966	SPV.0060 Special 0101. Maintenance of Lighting System (1228-22-70)	1.000 EACH	_____.	_____.
0968	SPV.0060 Special 0102. Lighting System Integrator (1228-22-70)	1.000 EACH	_____.	_____.
0970	SPV.0060 Special 0103. Lighting System Survey (1228-22-70)	1.000 EACH	_____.	_____.
0972	SPV.0060 Special 0104. Wood Pole Lighting 60-Foot	68.000 EACH	_____.	_____.
0974	SPV.0060 Special 0105. Wood Pole 60-Foot	9.000 EACH	_____.	_____.
0976	SPV.0060 Special 0106. Removing Poles Wood 60-Foot And Floodlights	68.000 EACH	_____.	_____.
0978	SPV.0060 Special 0107. Removing Poles Wood 60-Foot	9.000 EACH	_____.	_____.
0980	SPV.0060 Special 0108. Luminaires Floodlight 400W HPS	75.000 EACH	_____.	_____.
0982	SPV.0060 Special 0109. Removing Electrical Service Meter Breaker Pedestal Lighting	4.000 EACH	_____.	_____.



Proposal Schedule of Items

Proposal ID: 20230314012 Project(s): 1228-22-70, 1228-22-80, 1228-22-81, 1228-22-87

Federal ID(s): WISC 2023278, N/A, N/A, N/A

SECTION: 0001

Contract Items

Alt Set ID:

Alt Mbr ID:

Proposal Line Number	Item ID Description	Approximate Quantity and Units	Unit Price	Bid Amount
0984	SPV.0060 Special 0110. Remove and Salvage Street Lighting Unit	23.000 EACH	_____.	_____.
0986	SPV.0060 Special 0111. Remove Existing Wood Pole	1.000 EACH	_____.	_____.
0988	SPV.0060 Special 0112. Pull Box 13-Inch x 24-Inch x 24-Inch	13.000 EACH	_____.	_____.
0990	SPV.0060 Special 0113. Pull Box 17-Inch x 30-Inch x 24-Inch	2.000 EACH	_____.	_____.
0992	SPV.0060 Special 0114. Installing Luminaire Arms Steel 15-FT	9.000 EACH	_____.	_____.
0994	SPV.0060 Special 0115. Pole Type 30-AL-BD	19.000 EACH	_____.	_____.
0996	SPV.0060 Special 0116. Water Tight Splice & Connections	34.000 EACH	_____.	_____.
0998	SPV.0060 Special 0117. Luminaire Arm Single Member 8-Ft. (Special)	24.000 EACH	_____.	_____.
1000	SPV.0060 Special 0118. Installing City-Furnished Luminaire Utility LED	33.000 EACH	_____.	_____.
1002	SPV.0060 Special 0150. 5' Diameter "Doghouse" Manhole Type CUC	4.000 EACH	_____.	_____.
1004	SPV.0060 Special 0151. Removing CUC Manhole	4.000 EACH	_____.	_____.
1006	SPV.0060 Special 0152. Underdeck Utility Structure B-40-206	1.000 EACH	_____.	_____.
1008	SPV.0060 Special 0153. Underdeck Utility Structure B-40-207	1.000 EACH	_____.	_____.



Proposal Schedule of Items

Proposal ID: 20230314012 Project(s): 1228-22-70, 1228-22-80, 1228-22-81, 1228-22-87

Federal ID(s): WISC 2023278, N/A, N/A, N/A

SECTION: 0001

Contract Items

Alt Set ID:

Alt Mbr ID:

Proposal Line Number	Item ID Description	Approximate Quantity and Units	Unit Price	Bid Amount
1010	SPV.0060 Special 0160. Suspended Galvanized Steel Conduit Package Cleaning, Coating and Painting	1.000 EACH	_____.	_____.
1012	SPV.0060 Special 0161. Suspended Galvanized Steel Conduit Repair	3.000 EACH	_____.	_____.
1014	SPV.0060 Special 0162. Pull Ropes Anchored to Manholes	2.000 EACH	_____.	_____.
1016	SPV.0060 Special 0205. Speed Warning Sign System	1.000 EACH	_____.	_____.
1018	SPV.0060 Special 0206. Install Speed Warning System DMS	3.000 EACH	_____.	_____.
1020	SPV.0060 Special 0207. Salvaging Overhead Freeway DMS	1.000 EACH	_____.	_____.
1022	SPV.0060 Special 0210. Temporary Poles Wood 40-FT	3.000 EACH	_____.	_____.
1024	SPV.0060 Special 0211. Temporary Vehicle Detector Assembly	3.000 EACH	_____.	_____.
1026	SPV.0060 Special 0213. Ground Rod	18.000 EACH	_____.	_____.
1028	SPV.0060 Special 0214. Relocating Temporary Vehicle Detector Assembly	6.000 EACH	_____.	_____.
1030	SPV.0060 Special 0215. Refocus Vehicle Detector Assembly	35.000 EACH	_____.	_____.
1032	SPV.0060 Special 0216. Install Ethernet Radio	3.000 EACH	_____.	_____.
1034	SPV.0060 Special 0219. Signal Assembly Advance Flasher Type 2	1.000 EACH	_____.	_____.



Proposal Schedule of Items

Proposal ID: 20230314012 Project(s): 1228-22-70, 1228-22-80, 1228-22-81, 1228-22-87

Federal ID(s): WISC 2023278, N/A, N/A, N/A

SECTION: 0001

Contract Items

Alt Set ID:

Alt Mbr ID:

Proposal Line Number	Item ID Description	Approximate Quantity and Units	Unit Price	Bid Amount
1036	SPV.0060 Special 0224. Signal Assembly Ramp Control Sidemount	7.000 EACH	_____.	_____.
1038	SPV.0060 Special 0301. Fiberglass/Polymer Concrete Pull Box 17-Inch X 30-Inch X 24-Inch	34.000 EACH	_____.	_____.
1040	SPV.0060 Special 0302. Install Precast Control Cabinet Base	4.000 EACH	_____.	_____.
1042	SPV.0060 Special 0303. ATC Controller and Cabinet Installed	4.000 EACH	_____.	_____.
1044	SPV.0060 Special 0304. Vehicular Video Detection System - 2 Cameras	2.000 EACH	_____.	_____.
1046	SPV.0060 Special 0305. EVP 1 Channel 1 Direction Infrared Detector	12.000 EACH	_____.	_____.
1048	SPV.0060 Special 0306. EVP Confirmation Light	12.000 EACH	_____.	_____.
1050	SPV.0060 Special 0307. EVP Phase Selector Card 4 Channel	4.000 EACH	_____.	_____.
1054	SPV.0060 Special 0309. Ethernet Switch	4.000 EACH	_____.	_____.
1056	SPV.0060 Special 0310. Pedestrian Countdown Signal Face 12-inch	24.000 EACH	_____.	_____.
1058	SPV.0060 Special 0311. Cellular Modem	2.000 EACH	_____.	_____.
1060	SPV.0060 Special 0312. Wireless Antenna	2.000 EACH	_____.	_____.
1062	SPV.0060 Special 0313. SFP	24.000 EACH	_____.	_____.
1064	SPV.0060 Special 0314. Fiber Optic Splice Enclosure	1.000 EACH	_____.	_____.



Proposal Schedule of Items

Proposal ID: 20230314012 Project(s): 1228-22-70, 1228-22-80, 1228-22-81, 1228-22-87

Federal ID(s): WISC 2023278, N/A, N/A, N/A

SECTION: 0001

Contract Items

Alt Set ID:

Alt Mbr ID:

Proposal Line Number	Item ID Description	Approximate Quantity and Units	Unit Price	Bid Amount
1066	SPV.0060 Special 0400. Embedded Galvanic Anodes	2,803.000 EACH	_____.	_____.
1068	SPV.0060 Special 0401. Heat Straightening of Damaged Girders	5.000 EACH	_____.	_____.
1070	SPV.0075 Special 0001. Pavement Cleanup Project	1,500.000 HRS	_____.	_____.
1072	SPV.0090 Special 0001. Marking Contrast Epoxy 4-Inch	39,747.000 LF	_____.	_____.
1074	SPV.0090 Special 0002. Marking Contrast Epoxy 8-Inch	9,052.000 LF	_____.	_____.
1076	SPV.0090 Special 0101. Cable Aerial Aluminum 6 AWG Quadruplex	8,984.000 LF	_____.	_____.
1078	SPV.0090 Special 0102. Cable Aerial Aluminum 4 AWG Quadruplex	2,987.000 LF	_____.	_____.
1080	SPV.0090 Special 0111. Electrical Cable in Duct Type 4#8/1#8 XLPE	2,539.000 LF	_____.	_____.
1082	SPV.0090 Special 0112. Electrical Cable in Duct Type 4#6/1#8 XLPE	1,680.000 LF	_____.	_____.
1084	SPV.0090 Special 0113. Electrical Cable in Duct Type 4#4/1#8 XLPE	612.000 LF	_____.	_____.
1086	SPV.0090 Special 0150. 8-Duct Conduit, Cement Encased, 4-Inch Rigid Nonmetallic Conduit DB-60	109.000 LF	_____.	_____.
1088	SPV.0090 Special 0151. 4-Duct Conduit, Cement Encased, 4-Inch Rigid Nonmetallic Conduit DB-60	82.000 LF	_____.	_____.
1090	SPV.0090 Special 0152. 2-Duct Conduit Cement Encased 4-Inch Rigid Nonmetallic Conduit DB-60	383.000 LF	_____.	_____.



Proposal Schedule of Items

Proposal ID: 20230314012 Project(s): 1228-22-70, 1228-22-80, 1228-22-81, 1228-22-87

Federal ID(s): WISC 2023278, N/A, N/A, N/A

SECTION: 0001

Contract Items

Alt Set ID:

Alt Mbr ID:

Proposal Line Number	Item ID Description	Approximate Quantity and Units	Unit Price	Bid Amount
1092	SPV.0090 Special 0201. Outdoor Rated Network Cable	420.000 LF	_____.	_____.
1094	SPV.0090 Special 0400. Fencing Repair	50.000 LF	_____.	_____.
1096	SPV.0165 Special 0001. Wall Modular Block Mechanically Stabilized Earth	1,445.000 SF	_____.	_____.
1098	SPV.0165 Special 0400. Removing Loose Concrete Overhead	104.000 SF	_____.	_____.
1100	SPV.0165 Special 0401. Fiber Wrap Reinforcing Non-structural	1,019.000 SF	_____.	_____.
1102	SPV.0180 Special 0001. Resin Binder High Friction Surface Treatment Modified	88,265.000 SY	_____.	_____.
1104	SPV.0180 Special 0002. Removing Concrete Rumble Strips	160.000 SY	_____.	_____.
1106	SPV.0180 Special 0400. Methacrylate Flood Seal	1,382.000 SY	_____.	_____.
1108	SPV.0195 Special 0002. HMA Longitudinal Joint Repair	2,280.000 TON	_____.	_____.
1110	204.9060.S Removing (item description) 0001. Temporary Precast Trench Drain	478.000 EACH	_____.	_____.
1112	603.0405 Concrete Barrier Transition Section 32-Inch	34.000 LF	_____.	_____.
1114	603.1332 Concrete Barrier Type S32B	26.000 LF	_____.	_____.
1116	603.1342 Concrete Barrier Type S42B	114.000 LF	_____.	_____.
1118	603.3311 Concrete Barrier Transition Type NJ32DF to S32	1.000 EACH	_____.	_____.



Proposal Schedule of Items

Proposal ID: 20230314012 Project(s): 1228-22-70, 1228-22-80, 1228-22-81, 1228-22-87

Federal ID(s): WISC 2023278, N/A, N/A, N/A

SECTION: 0001

Contract Items

Alt Set ID:

Alt Mbr ID:

Proposal Line Number	Item ID Description	Approximate Quantity and Units	Unit Price	Bid Amount
1120	643.1200.S Portable Automated Real-Time Traffic Queue Warning System	330.000 DAY	_____.	_____.
1122	643.3550 Temporary Marking Arrow Removable Tape	2.000 EACH	_____.	_____.
1124	643.3850 Temporary Marking Stop Line Removable Tape 18-Inch	22.000 LF	_____.	_____.
1126	657.0536 Monotube Arms 35-FT-Special	5.000 EACH	_____.	_____.
1128	657.0541 Monotube Arms 40-FT-Special	2.000 EACH	_____.	_____.
1130	657.0546 Monotube Arms 45-FT-Special	1.000 EACH	_____.	_____.
1132	SPV.0060 Special 0019. Concrete Barrier Transition Type V32 to S32A	5.000 EACH	_____.	_____.
1134	SPV.0060 Special 0020. Concrete Barrier Transition Type V42 to S42A	13.000 EACH	_____.	_____.
1136	SPV.0060 Special 0021. Concrete Barrier Transition Type S56 to S32A	1.000 EACH	_____.	_____.
1138	SPV.0060 Special 0022. Concrete Barrier Transition Type S56 to S42A	4.000 EACH	_____.	_____.
1140	SPV.0060 Special 0023. Concrete Barrier Transition Type V56 to S32A	2.000 EACH	_____.	_____.
1142	SPV.0060 Special 0024. Concrete Barrier Transition Type V56 to S42A	9.000 EACH	_____.	_____.
1144	SPV.0060 Special 0025. Concrete Barrier Transition Type S32A to S42A	15.000 EACH	_____.	_____.
1146	SPV.0060 Special 0026. Concrete Barrier Transition Type V51 to S56 Special	1.000 EACH	_____.	_____.



Proposal Schedule of Items

Proposal ID: 20230314012 Project(s): 1228-22-70, 1228-22-80, 1228-22-81, 1228-22-87

Federal ID(s): WISC 2023278, N/A, N/A, N/A

SECTION: 0001

Contract Items

Alt Set ID:

Alt Mbr ID:

Proposal Line Number	Item ID Description	Approximate Quantity and Units	Unit Price	Bid Amount
1148	SPV.0060 Special 0027. Concrete Barrier Transition Type V56 to V42 Special	1.000 EACH	_____.	_____.
1150	SPV.0060 Special 0028. Concrete Barrier Transition Type V42 to S56A	1.000 EACH	_____.	_____.
1152	SPV.0060 Special 0019. Concrete Barrier Transition Type V56 to V56 Special I	1.000 EACH	_____.	_____.
1154	SPV.0060 Special 0030. Concrete Barrier Transition Type V56 to V56 Special II	1.000 EACH	_____.	_____.
1156	SPV.0060 Special 0031. Concrete Barrier Transition Type V32 to S42A	1.000 EACH	_____.	_____.
1158	SPV.0060 Special 0032. Concrete Barrier Type S42A Light Pole Base	45.000 EACH	_____.	_____.
1160	SPV.0060 Special 0033. Concrete Barrier Type V42 Light Pole Base	1.000 EACH	_____.	_____.
1162	SPV.0060 Special 0034. Concrete Barrier Type V42 Special Light Pole Base	1.000 EACH	_____.	_____.
1164	SPV.0060 Special 0035. Moving State Furnished Signs	2.000 EACH	_____.	_____.
1166	SPV.0060 Special 0036. Install State Furnished Signs	2.000 EACH	_____.	_____.
1168	SPV.0060 Special 0037. Cleaning Drainage Structures	40.000 EACH	_____.	_____.
1170	SPV.0060 Special 0402. Ultrasonic Impact Treatment Procedure	336.000 EACH	_____.	_____.
1172	SPV.0060 Special 0315. Fiber Optic Patch Panel 12-Count ST	2.000 EACH	_____.	_____.



Proposal Schedule of Items

Proposal ID: 20230314012 Project(s): 1228-22-70, 1228-22-80, 1228-22-81, 1228-22-87

Federal ID(s): WISC 2023278, N/A, N/A, N/A

SECTION: 0001

Contract Items

Alt Set ID:

Alt Mbr ID:

Proposal Line Number	Item ID Description	Approximate Quantity and Units	Unit Price	Bid Amount
1174	SPV.0135 Special 0001. Field Office Special	18.000 MON	_____.	_____.
	Section: 0001		Total:	_____.
			Total Bid:	_____.

