



# Wisconsin Department of Transportation

May 2, 2023

## Division of Transportation Systems Development

Bureau of Project Development  
4822 Madison Yards Way, 4<sup>th</sup> Floor South  
Madison, WI 53705

Telephone: (608) 266-1631  
Facsimile (FAX): (608) 266-8459

### NOTICE TO ALL CONTRACTORS:

**Proposal #11: 2210-12-70, WISC 2023363**  
**Summit Ave, Town Delafield**  
**STH 83 to STH 318**  
**USH 8**  
**Waukesha County**

### Letting of May 9, 2023

This is Addendum No. 01, which provides for the following:

#### Special Provisions:

Revised Special Provisions	
Article No.	Description
6	Utilities

Added Special Provisions	
Article No.	Description
45	Asphaltic Repair

#### Schedule of Items:

Revised Bid Item Quantities					
Bid Item	Item Description	Unit	Proposal Total Prior to Addendum	Proposal Quantity Change (-)	Proposal Total After Addendum
211.0400	Prepare Foundation for Asphaltic Shoulders	STA	257	38	295
305.0500	Shaping Shoulders	STA	257	-146	111
305.0504.S	Hauling Excess Shoulder Material	CY	1109	-599	510
465.0110	Asphaltic Surface Patching	Ton	1194	-952	242

<b>Added Bid Item Quantities</b>					
Bid Item	Item Description	Unit	Proposal Total Prior to Addendum	Quantity Added	Proposal Total After Addendum
SPV.0195.01	Asphaltic Repair	Ton	0	900	900

<b>Deleted Bid Item Quantities</b>					
Bid Item	Item Description	Unit	Proposal Total Prior to Addendum	Proposal Quantity Change (-)	Proposal Total After Addendum
208.0100	Borrow	CY	411	-411	0

**Plan Sheets:**

<b>Revised Plan Sheets</b>	
Plan Sheet	Plan Sheet Title (brief description of changes to sheet)
3	General Notes – Updated Utility Contact List
7	Typical Section – Adjusted limits of Prepare Foundation for Asphaltic Shoulder
11	Construction Detail – Note changed to reference correct item
31	Removal Plans – Note changed to reference Village of Wales to support sanitary sewer
148	Traffic Control – Note changed to reference correct item
149	Traffic Control – Note changed to reference correct item
152	Traffic Control – Note changed to reference correct item
153	Traffic Control – Note changed to reference correct item
175	Miscellaneous Quantities - Information added, Borrow item quantity change
176	Miscellaneous Quantities - Hauling Excess Shoulder Material item quantity change
178	Miscellaneous Quantities – Item Quantity Update and added item

The responsibility for notifying potential subcontractors and suppliers of these changes remains with the prime contractor.

Sincerely,

*Mike Coleman*

Proposal Development Specialist  
Proposal Management Section

**ADDENDUM NO. 01**

**2210-12-70**

**May 2, 2023**

**Special Provisions**

**6. Utilities.**

*Replace entire article language with the following:*

This contract comes under the provisions of Wisconsin Administrative Code Chapter Trans 220.

stp-107-065 (20080501)

There are utility facilities within the construction limits of this project. Additional detailed information regarding the location of discontinued, relocated, and/or removed utility facilities is available in the work plan provided by each utility company and/or on any permits issued to them. These documents and/or additional detailed information regarding the location of utility facilities is available at the region WisDOT office during normal working hours.

Bidders are advised to contact each utility company listed in the plans prior to preparing their bids to obtain current information on the status of any utility work within the project work limits.

Coordinate construction activities with a call to Diggers Hotline and/or a direct call to the utilities that have facilities in the area as required per statutes. Use caution to ensure the integrity of underground and overhead facilities.

Some of the utility work described below is dependent on prior work being performed by the contractor at a specific site. In such situations, provide the engineer and the affected utility a good faith notice of when the utility is to start work at the site. Provide this notice 14 to 16 calendar days in advance of when the prior work will be completed and the site will be available to the utility owner. Follow-up with a confirmation notice to the engineer and the utility owner not less than three working days before the site will be ready for the utility owner to begin its work.

The following utility owners have facilities in the project area:

**AT&T Legacy – Communication Line** does not have facilities within the construction limits. No conflicts or adjustments are anticipated within the construction limits.

**AT&T Wisconsin – Communication Line** has existing overhead and buried facilities within the project limits. No conflicts or adjustments are anticipated within the construction limits.

**ATC Management, Inc.** has existing 138 kV overhead and buried facilities within the project limits. No conflicts or adjustments are anticipated within the construction limits.

**Brightspeed of Western Wisconsin** has existing underground and overhead fiber facilities within the project limits, attached to WE Energies poles. No conflicts or adjustments are anticipated within the construction limits.

**City of Waukesha – Communication Line** has existing facilities within the project limits. No conflicts or adjustments are anticipated within the construction limits.

**City of Waukesha – Sanitary Sewer** has existing facilities within the project limits.

Sanitary Manholes at 291+10 33.0' RT and 308+95 52.0 RT will be adjusted by the City of Waukesha according to city standards requiring the replacement of the entire chimney, frame and cover. Adjustments will be completed during construction.

Notify the City of Waukesha prior to adjustments being required based on the construction schedule. City of Waukesha will require 2 working days to complete the adjustments.

**Everstream** has existing facilities within the project limits. No conflicts or adjustments are anticipated within the construction limits.

**Level 3 Communications** has existing facilities within the project limits. No conflicts or adjustments are anticipated within the construction limits.

**PaeTec Communications** has existing facilities within the project limits. No conflicts or adjustments are anticipated within the construction limits.

**Spectrum Communication Line** has existing facilities within the project limits. No conflicts or adjustments are anticipated within the construction limits.

**Village of Wales – Lighting** has existing facilities within the project limits. It is anticipated that replacement of signals and sidewalk at Oak Crest Drive will be in close proximity to existing underground lighting facilities. No conflicts are anticipated within the construction limits.

**Village of Wales – Sanitary Sewer** has an existing 6" sanitary force main located at Station 222+70 and runs over the top of the cattle pass (C-67-073) being replaced with this project. The Village of Wales will support the sanitary sewer during construction of the cattle pass. Notify the Village of Wales prior to excavation operations and when the site will be available to the Village of Wales.

**Waukesha Water Utility** has existing facilities within the project limits.

Two water valves are located within the project limits and will require adjustment. Notify the Waukesha Water Utility prior to paving operations and when the site will be available to the Waukesha Water Utility.

**We Energies – Electricity** has overhead and buried facilities within the project corridor. No conflicts or adjustments are anticipated within the construction limits.

We Energies Electric Dispatch, 1 (800) 662-4797. We Energies Gas Dispatch, 1 (800) 261-5325.

**We Energies – Gas**

Station 54+00 to Station 65+37 Replace existing 8" ST main, prop 8" PE main. Offset varies gradually from 42' RT @ Station 54+00 to 53' RT @ Station 65+37. Main to be installed at a minimum depth of 30"

Wildwood TRL. – Replace 2" ST valve with 2" PE valve

Pebble Creek Pass – Replace 2" ST valve with 2" PE valve

Moraine Farm Rd. – Remove 2" ST valve from system. Replace with a section of 2" ST pipe.

Gas service for 301 E Summit Ave. to be replaced.

Gas service for 323 E Summit Ave. to be replaced.

Gas service for 580 E Summit Ave. to be replaced at a depth of no less than 42" crossing USH 18

Gas service for S11 W30476 Summit Ave. to be replaced at a depth of no less than 42" crossing USH 18

Gas service for S11 W30211 Summit Ave to be replaced.

Any facilities not explicitly identified as being relocated and/or adjusted have been deemed to be not in conflict and will remain in place as is. We Energies has determined that the project is constructible with these facilities left within the work-zone.

Work is anticipated to begin no later than 4/24/23 and is estimated to be complete 30 working days prior to construction.

Contact 1-800-261-5325 for gas emergencies, to identify if gas facilities are live, and gas valve box adjustments.

It is imperative that the highway contractor contact We Energies before removing any gas facilities to verify that they have been discontinued and carry no natural gas. The contractor must not assume that unmarked facilities have been discontinued. At no time is it acceptable to push, pull, cut or drill an unmarked facility without explicit consent from We Energies. Contractor must call the We Energies 24-hour Dispatch lines to arrange for this verification.

#### **45. Asphaltic Repair, Item SPV.0195.01.**

##### **A Description**

This special provision describes repairing areas of existing asphalt pavement with asphaltic mixtures for overlaying with new pavement.

##### **B Material**

Furnish nominal size No. 3 (19mm) aggregate blend graded as specified in 460.2.2.3 and conform to the other material and mixture requirements specified for asphaltic surface in 465. Use tack coat as required under 450.3.2.7.

##### **C Construction**

- (1) Remove areas of existing asphalt pavement, including existing patching or surfacing materials, at locations the plans show or the engineer directs in the field as specified for removing asphaltic surface milling in 204.3.2.2.2. Mill the connecting edges as true and perpendicular as possible, both parallel and perpendicular to the roadway, creating a vertical edge on all sides. Remove the pavement without injury to the remaining pavement. Dispose of removed material as specified in 204.3.1.3.
- (2) As an option for areas of full depth removal, the contractor may remove areas of existing asphalt pavement, including existing patching or surfacing materials, as specified for removing asphaltic surface in 204.3.2.2.1. Saw cut the connecting edges as true and perpendicular as possible, as specified for sawing pavement in 690. Remove the pavement without injury to the remaining pavement. Dispose of removed material as specified in 204.3.1.3.
- (3) Construct as specified for asphaltic surface under 465.3 except as modified here.

*Replace standard spec 465.3.1(2) with the following:*

- (2) Place using self-propelled pavers. Pave at a constant speed, appropriate for the paver and mixture, that ensures uniform spreading and strike-off with a smooth, dense texture and no tearing or segregation.

*Replace standard spec 465.3.1(3) with the following:*

- (3) Immediately after placement, compact the mixture to produce a dense smooth surface using ordinary compaction procedures as specified in 450.3.2.6. Unless the engineer directs otherwise, compact each layer to a thickness of 6 inches or less so that the finished surface is 1/16 inch to 1/8 inch above the existing pavement surface.

##### **D Measurement**

The department will measure Asphaltic Repair by the ton acceptably completed as specified for asphaltic pavement in 450.4.

**E Payment**

(1) The department will pay for measured quantities at the contract unit price under the following bid item:

ITEM NUMBER	DESCRIPTION	UNIT
SPV.0195.01.	Asphaltic Repair	TON

(2) Payment is full compensation for removing old pavement; for preparing the foundation; and for providing and compacting asphaltic mixture including asphaltic binder. Sawing existing asphalt pavement as a contractor option is incidental to the Asphaltic Repair bid item.

(3) The department will pay separately for tack coat under the Tack Coat bid item as specified in 455.5.

SER-390-001 (20220408)

**Schedule of Items**

Attached, dated May 2, 2023, are the revised Schedule of Items Pages 1 – 13.

**Plan Sheets**

The following 8½ x 11-inch sheets are attached and made part of the plans for this proposal:

Revised: Page 3, 7, 11, 31, 148, 149, 152,153, 175, 176, 178

END OF ADDENDUM

**STATE AGENCIES**

**WISCONSIN DEPARTMENT OF TRANSPORTATION**  
 RICH HERRICK  
 PROJECT MANAGER  
 141 NW BARSTOW STREET ROOM 180  
 WAUKESHA, WI 53188  
 OFFICE (262) 548-6463  
 Richard.Herrick@dot.wi.gov

**WISCONSIN DEPARTMENT OF NATURAL RESOURCES**  
 CRAIG WEBSTER  
 DNR SERVICE CENTER  
 141 NW BARSTOW STREET ROOM 180  
 WAUKESHA, WI 53188  
 OFFICE (262) 574-2141  
 Craig.Webster@wisconsin.gov

**ORDER OF SECTION 2 DETAIL SHEETS**

GENERAL NOTES  
 PROJECT OVERVIEW  
 TYPICAL SECTIONS  
 CONSTRUCTION DETAILS  
 PLAN DETAILS  
 EROSION CONTROL  
 TRAFFIC CONTROL  
 DETOUR  
 ALIGNMENT

**Addendum No. 01**  
**ID 2210-12-70**  
**Revised Sheet 3**  
**May 2, 2023**



**UTILITY CONTACTS**

**PAETEC COMMUNICATIONS, LLC**  
 LORI KETTER  
 314 N DANZ AVE  
 GREEN BAY, WI 54302-3526  
 (414) 274-9215  
 LORIKETTER@WINDSTREAM.COM

**SPECTRUM - COMMUNICATION**  
 BEAU ABUYA  
 1320 N DR MARTIN LUTHER KING JR DR  
 MILWAUKEE, WI 53212  
 (414) 908-1343  
 WIS.ENGINEERING@CHARTER.COM

**VILLAGE OF WALES - ROAD FACILITY**  
 GAIL TAMEZ  
 P.O. BOX 47  
 WALES, WI 53183  
 (262) 968-3968  
 WALESCLERK@BIZWI.rr.COM

**VILLAGE OF WALES - SEWER**  
 GAIL TAMEZ  
 P.O. BOX 47  
 WALES, WI 53183  
 (262) 968-3968  
 WALESCLERK@BIZWI.rr.COM

**WAUKESHA WATER UTILITY - WATER**  
 CHRIS WALTER  
 P.O. BOX 1648  
 WAUKESHA, WI 53187-1648  
 (262) 521-5272  
 CWALTER@WAUKESHA-WATER.COM

**WE ENERGIES - ELECTRICITY**  
 WE ENERGIES UTILITY COORDINATOR  
 500 S 116TH STREET  
 WEST ALLIS, WI 53214  
 (414) 221-2738  
 WE-UTILITY-RELOCATIONS@WE-ENERGIES.COM

**WE ENERGIES - GAS/PETROLEUM**  
 WE ENERGIES UTILITY COORDINATOR  
 500 S 116TH STREET  
 WEST ALLIS, WI 53214  
 (414) 221-2738  
 WE-UTILITY-RELOCATIONS@WE-ENERGIES.COM

**AT&T LEGACY**  
 VANESSA ROSS  
 555 E. COOK ST  
 SPRINGFIELD, IL 62703  
 (217) 814-2314  
 VF2021@ATT.COM

**AT&T WISCONSIN**  
 TOM CROWLEY  
 435 SOUTH 95TH ST  
 MILWAUKEE, WI 53124-1226  
 (262) 896-7427  
 TC1657@ATT.COM

**ATC MANAGEMENT, INC.**  
 TRANS 220 MAILBOX  
 801 O'KEEFE RD  
 P.O. BOX 6113  
 DE PERE, WI 54115  
 DLATCDDNOTIFICATIONS@ATCLLC.COM

**BRIGHTSPEED OF WESTERN WISCONSIN**  
 KEVIN ZICKERT  
 224 INDUSTRIAL DR  
 NORTH PRAIRIE, WI 53153  
 (987) 716-5964  
 KEVIN.ZICKERT@BRIGHTSPEED.COM

**CITY OF WAUKESHA - COMMUNICATION**  
 JEFF HERNKE  
 130 DELA FIELD STREET  
 WAUKESHA, WI 53188  
 (262) 524-5592  
 JHERNKE@WAUKESHA-WI.GOV

**CITY OF WAUKESHA - SEWER**  
 CHRISTOPHER LANGEMAK  
 201 DELA FIELD ST  
 MILWAUKEE, WI 53188  
 (262) 524-3589  
 CLANGEMAK@WAUKESHA-WI.GOV

**EVERSTREAM - COMMUNICATION**  
 EVERSTREAM UTILITY COORDINATION  
 324 E WISCONSIN AVE, SUITE 730  
 MILWAUKEE, WI 53202  
 (414) 409-1709  
 WRELOCATIONS@EVERSTREAM.NET

**LEVEL 3 COMMUNICATIONS LLC**  
 SCOTT HEIZELMAN  
 144 N. PEARL ST  
 BERLIN, WI 53153  
 SCOTT.HEIZELMAN@LUMEN.COM

**OTHER AGENCY CONTACTS**

**KETTLE MORAINNE SCHOOL DISTRICT COMMUNICATION LINE**  
 BOB BOYD  
 563 AJ ALLEN CIR  
 WALES, WI 53183  
 (262) 968-6300  
 BOYDB@KMSD.EDU

**WISDOT - COMMUNICATION LINE**  
 JEFF MADSON  
 433 W. ST. PAUL AVE.  
 STE. 300  
 MILWAUKEE, WI 53203-3007  
 (414) 225-3723  
 JEFFREY.MADSON@DOT.WI.GOV

**WISDOT - STREET LIGHTING**  
 ERIC PEREA  
 141 NW BARSTOW STREET  
 WAUKESHA, WI 53188  
 (262) 574-5422  
 ERIC.PEREA@DOT.WI.GOV

**WISDOT - SIGNALS**  
 JARRETT GATES  
 141 NW BARSTOW STREET  
 WAUKESHA, WI 53188  
 (262) 548-5884  
 JARRETT.GATES@DOT.WI.GOV

**WAUKESHA COUNTY DPW**  
 KAREN BRAUN  
 1320 PEWAUKEE ROAD  
 WAUKESHA, WI 53188  
 (262) 548-7740  
 KBRAUN@WAUKESHACOUNTY.GOV

**VILLAGE OF WALES - ROAD FACILITY**  
 GAIL TAMEZ  
 129 W. MAIN ST  
 WALES, WI 53183  
 (262) 968-3968  
 WALESCLERK@BIZWI.rr.COM

**SOUTHEASTERN WISCONSIN REGIONAL PLANNING COMMISSION**  
 ROB MERRY  
 W/239 N1812 ROCKWOOD DRIVE  
 PO BOX 1607  
 WAUKESHA, WI 53187-1607  
 OFFICE (262) 653-4289  
 RMERRY@SEWRPC.ORG

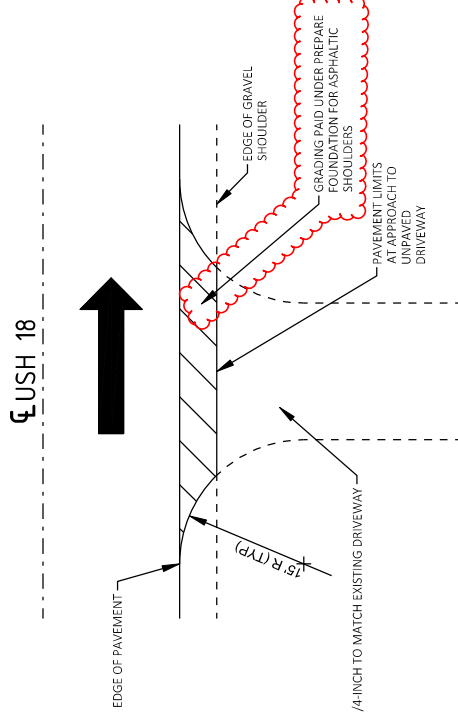
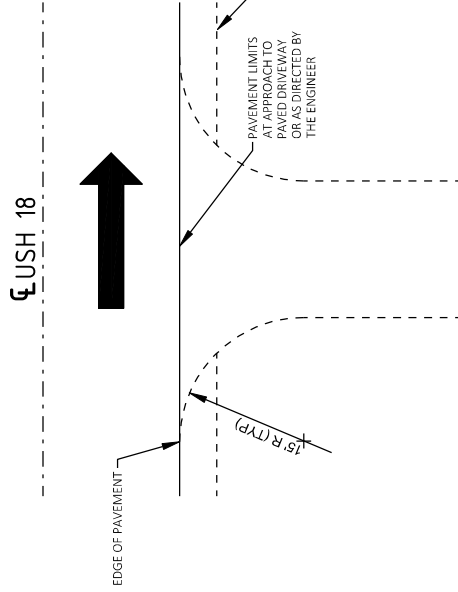
**TOWN OF DELAFIELD**  
 DAN GREEN  
 DELAFIELD TOWN HALL  
 W302 N1254 MAPLE AVENUE  
 DELAFIELD, WI 53018  
 (262) 846-2398

**CITY OF WAUKESHA**  
 FRED ABADI  
 130 DELAFIELD ST  
 WAUKESHA, WI 53188  
 (262) 524-3600  
 DPFW@WAUKESHA-WI.GOV





Addendum No. 01  
 ID 2210-12-70  
 Revised Sheet 11  
 May 2, 2023



PLACE BASE AGGREGATE DENSE 3/4-INCH TO MATCH EXISTING DRIVEWAY

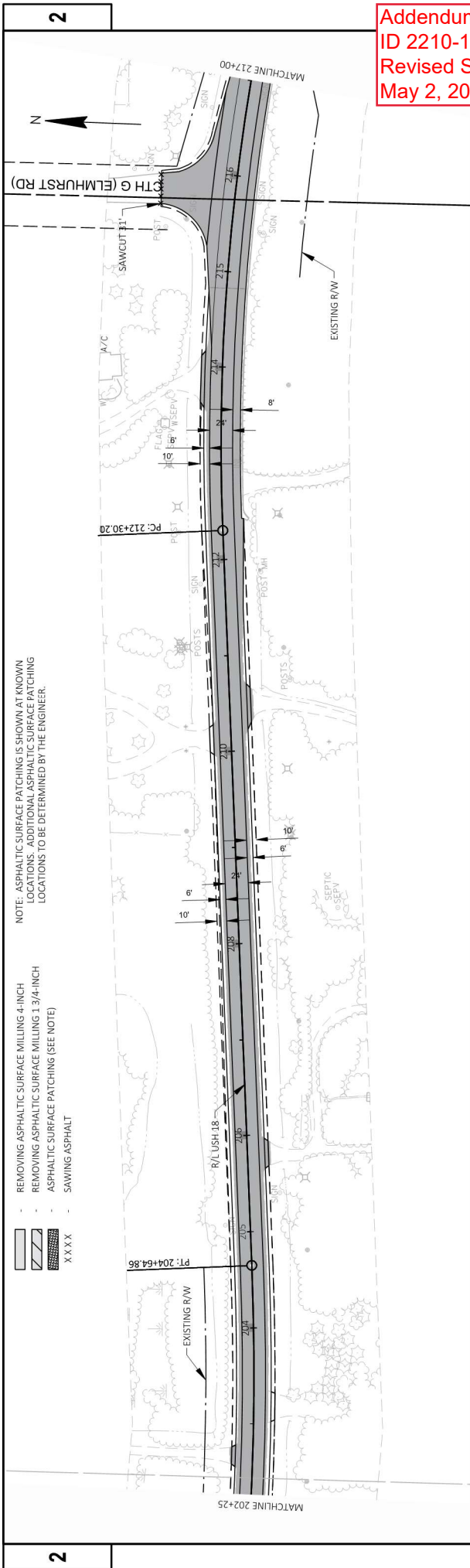
NOTE: DRIVEWAY TO BE REPLACED IN KIND

**ASPHALTIC SURFACE DRIVEWAYS AND FIELD ENTRANCES**



ASPHALTIC SURFACE DRIVEWAYS AND FIELD ENTRANCES

PROJECT NO: 2210-12-70	COUNTY: WAUKESHA	PLAN: CONSTRUCTION DETAILS	SHEET 11	E
FILE NAME: N:\PDS\3\2101200\SHEETS\PLAN\021007A_CD.DWG	PLOT DATE: 4/26/2023 8:28 PM	PLOT BY: MOUNT_IQBHUA	PLOT NAME: 1 IN=10 FT	WISDOT/CADD/SHEET 42
LAYOUT NAME: 021007A_CD-02				

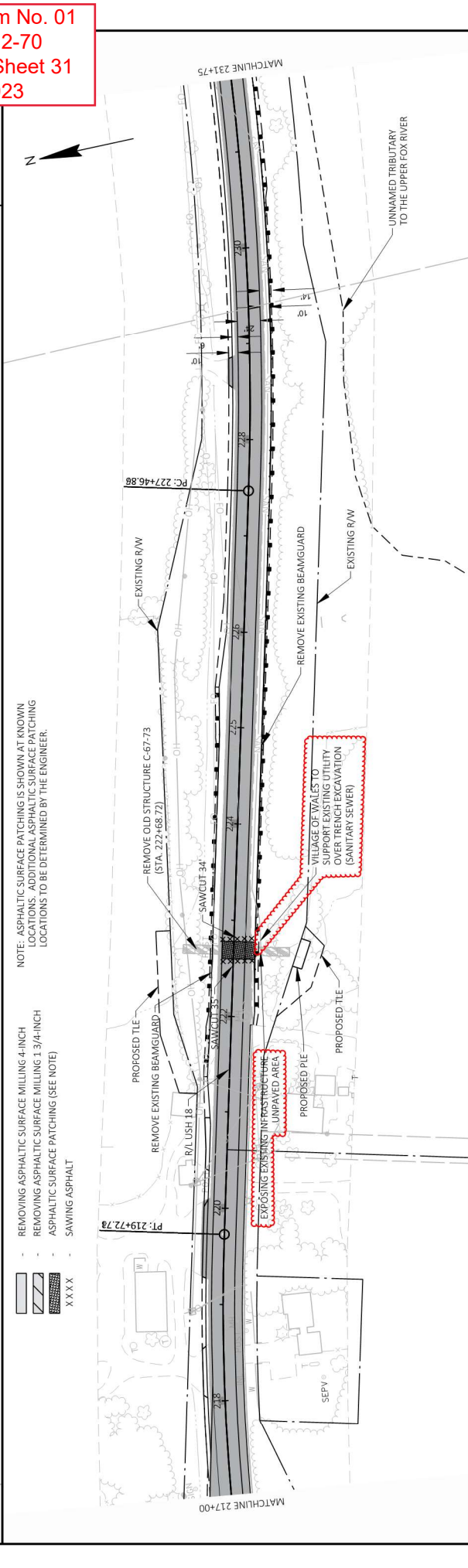


NOTE: ASPHALTIC SURFACE PATCHING IS SHOWN AT KNOWN LOCATIONS. ADDITIONAL ASPHALTIC SURFACE PATCHING LOCATIONS TO BE DETERMINED BY THE ENGINEER.

- REMOVING ASPHALTIC SURFACE MILLING 4-INCH
- REMOVING ASPHALTIC SURFACE MILLING 1 3/4-INCH
- ASPHALTIC SURFACE PATCHING (SEE NOTE)
- SAWING ASPHALT



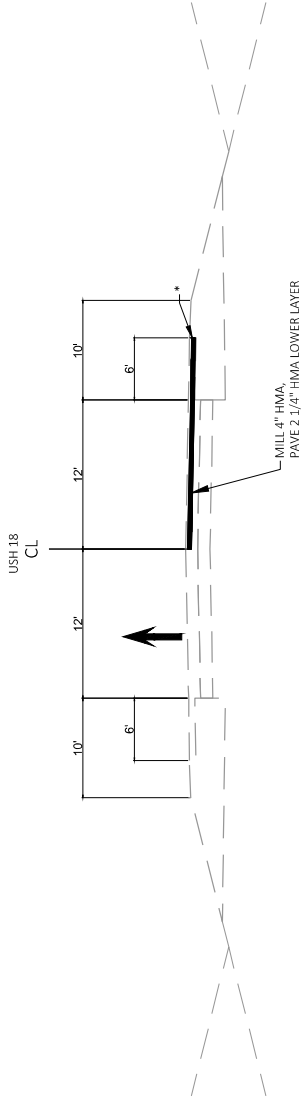
Addendum No. 01  
ID 2210-12-70  
Revised Sheet 31  
May 2, 2023



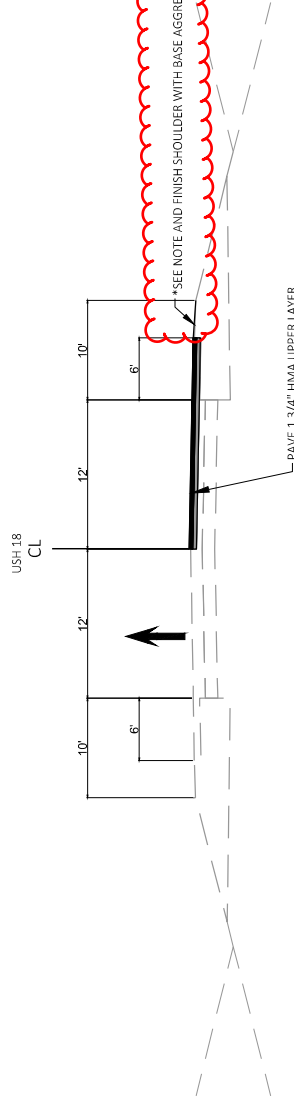
NOTE: ASPHALTIC SURFACE PATCHING IS SHOWN AT KNOWN LOCATIONS. ADDITIONAL ASPHALTIC SURFACE PATCHING LOCATIONS TO BE DETERMINED BY THE ENGINEER.

- REMOVING ASPHALTIC SURFACE MILLING 4-INCH
- REMOVING ASPHALTIC SURFACE MILLING 1 3/4-INCH
- ASPHALTIC SURFACE PATCHING (SEE NOTE)
- SAWING ASPHALT





TRAFFIC CONTROL FOR FLAGGING OPERATIONS  
 ASPHALT MILLING AND PAVING DETAIL  
 STAGE 1 - USH 18 (WESTBOUND)



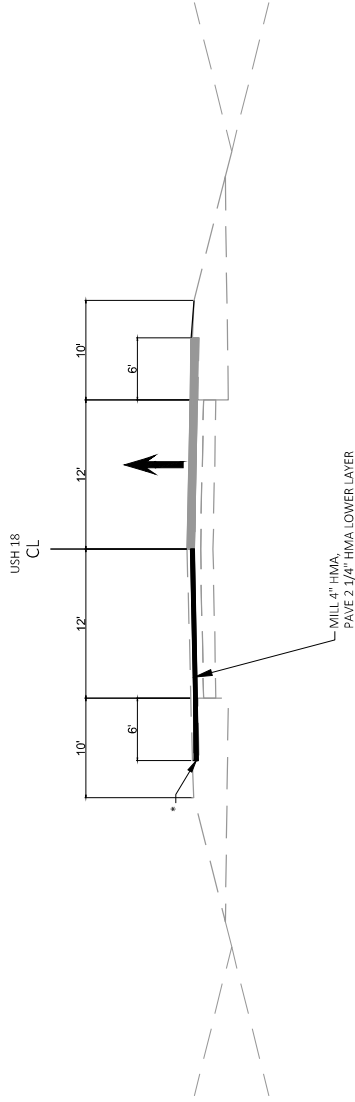
TRAFFIC CONTROL FOR FLAGGING OPERATIONS  
 ASPHALT MILLING AND PAVING DETAIL  
 STAGE 1 - USH 18 (WESTBOUND)

Addendum No. 01  
 ID 2210-12-70  
 Revised Sheet 148  
 May 2, 2023

NOTES:  
 \*GRADE AND SHAPE AGGREGATE SHOULDER BEFORE REOPENING LANE TO TRAFFIC.  
 INCIDENTAL TO ITEM PREPARE FOUNDATION FOR ASPHALTIC SHOULDERS AT LOCATIONS OF PAVED SHOULDER WIDENING AND SHAPING SHOULDERS IN AREAS WITHOUT WIDENING.

\*SEE NOTE AND FINISH SHOULDER WITH BASE AGGREGATE DENSE 2<sup>3/4</sup>

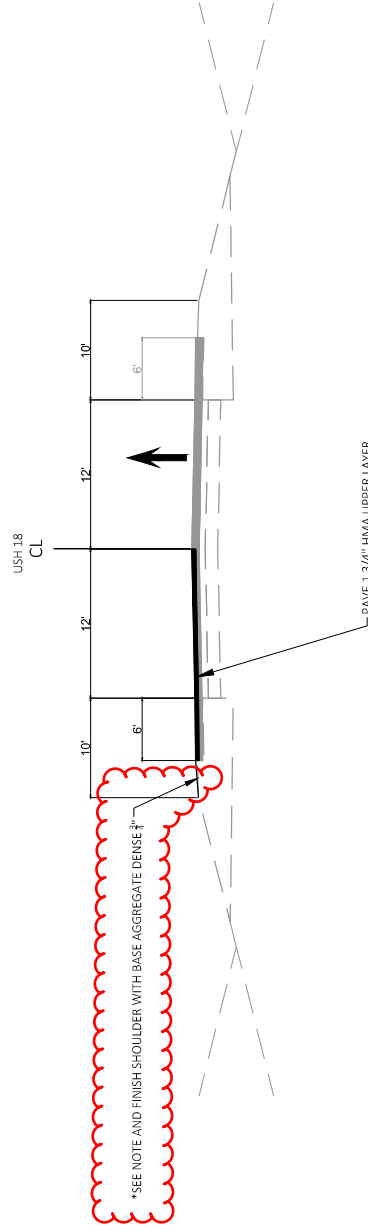
PROJECT NO: 2210-12-70	COUNTY: WAUKESHA	SHEET: 148	E
FILE NAME: C:\USERS\JMOUNT\DESKTOP\76957_SPL_OWSITE_PDS_SUPPORT\22101200\ADDRESS\026001_S1.DWG	DATE: 5/1/2023 9:10 AM	PLOT SCALE: 1 IN=10 FT	WIS007CADDSS SHEET 148
LAYOUT NAME: 026001_S1	FLYBY: JOSHUA MOUNT		



TRAFFIC CONTROL FOR FLAGGING OPERATIONS  
 ASPHALT MILLING AND PAVING DETAIL  
 STAGE 1 - USH 18 (EASTBOUND)

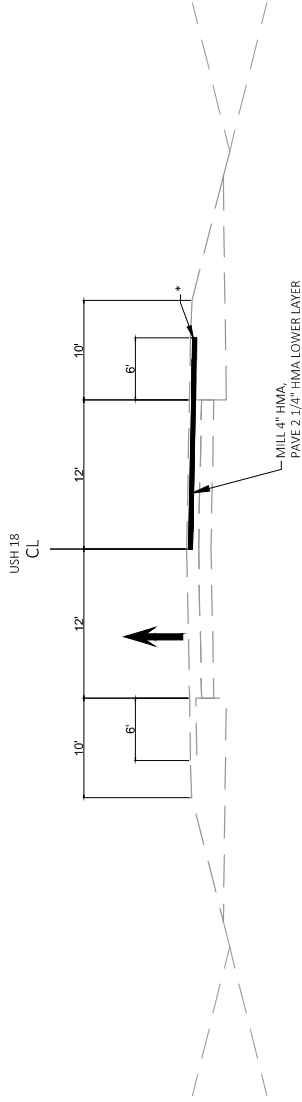
Addendum No. 01  
 ID 2210-12-70  
 Revised Sheet 149  
 May 2, 2023

NOTES:  
 \*GRADE AND SHAPE AGGREGATE SHOULDER BEFORE REOPENING LANE TO TRAFFIC.  
 INCIDENTAL TO ITEM PREPARE FOUNDATION FOR ASPHALTIC SHOULDERS AT LOCATIONS OF PAVED SHOULDER WIDENING AND SHAPING SHOULDERS IN AREAS WITHOUT WIDENING.

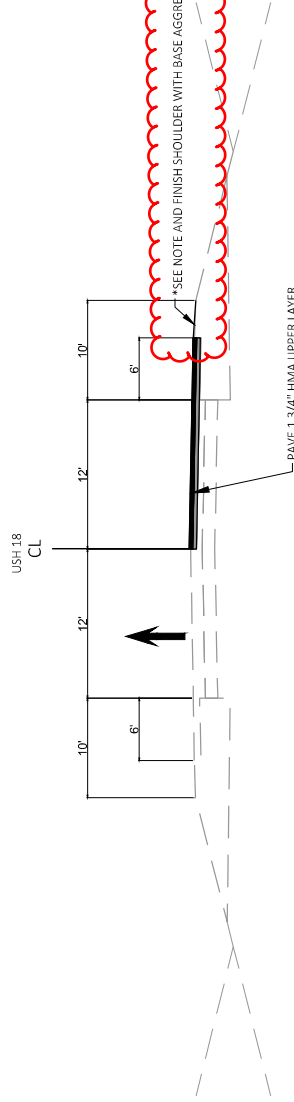


TRAFFIC CONTROL FOR FLAGGING OPERATIONS  
 ASPHALT MILLING AND PAVING DETAIL  
 STAGE 1 - USH 18 (EASTBOUND)

PROJECT NO: 2210-12-70	COUNTY: WAUKESHA	TRAFFIC CONTROL - STAGE 1	SHEET 149	E
FILE NAME: C:\USERS\JMOUNT\DESKTOP\76957_SPL_OVSITE_FDS_SUPPORT\22101200\ADDRESS\026001_S1.DWG	DATE: 5/1/2023 9:11 AM	PLOT BY: JOSHUA MOUNT	PLOT SCALE: 1 IN=10 FT	WIS007C005 SHEET 149
LAYOUT NAME: 026001_S1				



TRAFFIC CONTROL FOR FLAGGING OPERATIONS  
 ASPHALT MILLING AND PAVING DETAIL  
 STAGE 2 - USH 18 (WESTBOUND)

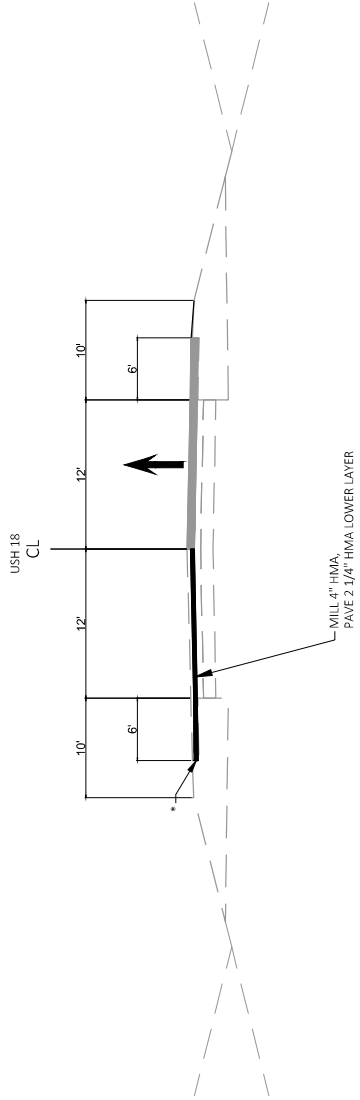


TRAFFIC CONTROL FOR FLAGGING OPERATIONS  
 ASPHALT MILLING AND PAVING DETAIL  
 STAGE 2 - USH 18 (WESTBOUND)

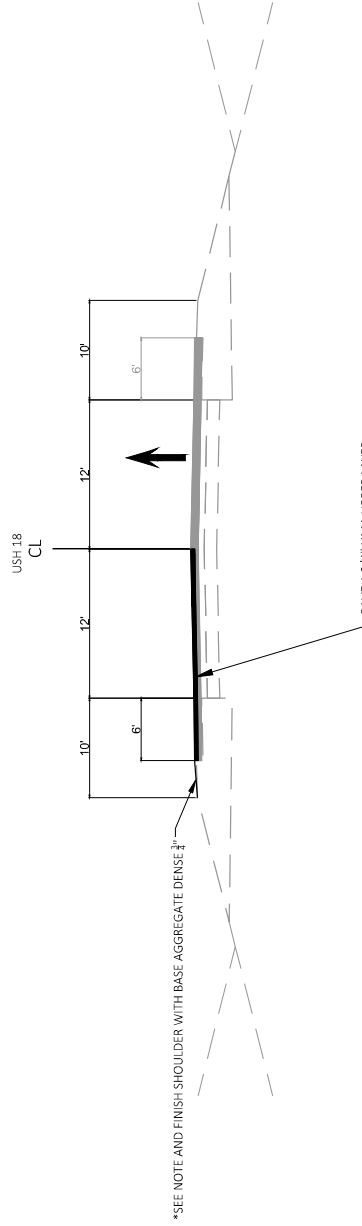
Addendum No. 01  
 ID 2210-12-70  
 Revised Sheet 152  
 May 2, 2023

**NOTES:**  
 \*GRADE AND SHAPE AGGREGATE SHOULDER  
 \*PAVE 1 1/4" HMA UPPER LAYER  
 \*PAVE 2 1/4" HMA LOWER LAYER  
 \*MILL 4" HMA  
 \*SEE NOTE AND FINISH SHOULDER WITH BASE AGGREGATE DENSE 3<sup>1/2</sup>  
 \*FOR ASPHALTIC SHOULDERS AT LOCATIONS OF  
 \*PAVED SHOULDER WIDENING AND SHAPING  
 \*SHOULDERS IN AREAS WITHOUT WIDENING.

PROJECT NO: 2210-12-70	COUNTY: WAUKESHA	TRAFFIC CONTROL - STAGE 2	SHEET 152	E
FILE NAME: C:\USERS\JMOUNT\DESKTOP\76957_SPL_OWSITE_PDS_SUPPORT\22101200\ADDRESS\026001_S2.DWG	HWY: USH 18	DATE: 5/1/2023 9:14 AM	PLOT SCALE: 1 IN=10 FT	WIS007CADDSS SHEET 12
LAYOUT NAME: 026001_S2		PLOT BY: JOSHUA MOUNT		



TRAFFIC CONTROL FOR FLAGGING OPERATIONS  
 ASPHALT MILLING AND PAVING DETAIL  
 STAGE 2 - USH 18 (EASTBOUND)



\*SEE NOTE AND FINISH SHOULDER WITH BASE AGGREGATE DENSE 3"

TRAFFIC CONTROL FOR FLAGGING OPERATIONS  
 ASPHALT MILLING AND PAVING DETAIL  
 STAGE 2 - USH 18 (EASTBOUND)

Addendum No. 01  
 ID 2210-12-70  
 Revised Sheet 153  
 May 2, 2023

NOTES:  
 \*MILL AND SHAPE AGGREGATE SHOULDER BEFORE OPENING LANE TO TRAFFIC. INCIDENTAL TO ITEM PREPARE FOUNDATION FOR ASPHALTIC SHOULDERS AT LOCATIONS OF PAVED SHOULDER WIDENING AND SHAPING SHOULDERS IN AREAS WITHOUT WIDENING.

PROJECT NO: 2210-12-70	COUNTY: WAUKESHA	TRAFFIC CONTROL - STAGE 2	SHEET 153	E
FILE NAME: C:\USERS\JMOUNT\DESKTOP\7697_SPL_OWSITE_PDS_SUPPORT\22101200\ADDRESS\026001_S2.DWG	DATE: 5/1/2023 9:14 AM	PLOT BY: JOSHUA MOUNT	PLOT SCALE: 1 IN=10 FT	WIS007C005 SHEET 12
LAYOUT NAME: 026001_S2				

Addendum No. 01  
ID 2210-12-70  
Revised Sheet 175  
May 2, 2023

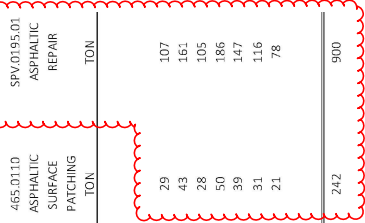
DIVISION	FROM/TO STATION	LOCATION	COMMON EXCAVATION (1)		SALVAGED/UNUSABLE PAVEMENT MATERIAL (4)	AVAILABLE MATERIAL (5)	UNEXPANDED FILL	EXPANDED FILL FACTOR 1.25 (13)	MASS ORDNATE +/- (14)	WASTE	SURPLUS SHOULDER MATERIAL (16)	208.0100 BORROW	COMMENT
			CUT (2)	EBS EXCAVATION (3)									
DIVISION 1	163+00.00/165+00.00 165+00.73/167+23.50 13+00.56/14+00.00 20+18.00/21+16.39	US 18 US 18 DRIVEWAY AT US 18 STA 163+50 DRIVEWAY AT US 18 STA 165+50	112 98 0 7 217	0 0 0 0 0	0 0 0 0 0	112 88 0 7 217	36 7 0 13 36	45 9 0 16 70	67 89 13 -8 160	67 89 13 0 169	0 0 0 0 0	MGS GRADING MGS GRADING MGS GRADING MGS GRADING MGS GRADING	
DIVISION 2	173+25.45/180+00.00 180+00.66/180+90.00	US 18 US 18	243 27	0 0	0 0	243 27	187 7	234 9	9 18	9 18	0 0	MGS GRADING MGS GRADING	
DIVISION 3	10+20.87/10+91.88 20+02.09/20+81.53	DRIVEWAY AT US 18 STA 174+75 DRIVEWAY AT US 18 STA 174+75 EAST SIDE	3 0 273	0 0 0	0 0 0	3 0 273	25 93 312	31 116 390	-28 -116 -117	0 0 28	28 116 144	0 0 0	MGS GRADING MGS GRADING MGS GRADING
DIVISION 4	220+75.88/225+00.00 225+00.00/234+50.00	US 18 US 18	205 253 458	0 0 0	0 0 0	205 253 458	217 87 304	271 109 380	-66 144 78	0 144 144	66 0 66	0 0 0	MGS AND CATTLE PASS MGS GRADING MGS GRADING
DIVISION 4 SUBTOTAL	291+75.00/299+85.00	US 18	297 297	0 0	0 0	297 297	390 390	488 488	-191 -191	0 0	191 191	0 0	MGS GRADING MGS GRADING
GRAND TOTAL			1,245 1,245	0 0	0 0	1,245 1,245	1,062 1,062	1,378 1,378	-70 -70	341 341	410 100	0 510	MGS GRADING MGS GRADING
TOTAL SURPLUS SHOULDER MATERIAL USE											510		

- NOTES:
- COMMON EXCAVATION IS THE SUM OF THE CUT AND EBS EXCAVATION COLUMNS. ITEM NUMBER 205.0100
  - SALVAGED/UNUSABLE PAVEMENT MATERIAL IS INCLUDED IN CUT.
  - EBS EXCAVATION TO BE BACKFILLED WITH SELECT BORROW MATERIAL. NOTE: THIS IS DESIGNER'S CHOICE, CAN BE BACKFILLED WITH BORROW, OR CUT AS WELL.
  - SALVAGED/UNUSABLE PAVEMENT MATERIAL
  - AVAILABLE MATERIAL = CUT - SALVAGED/UNUSABLE PAVEMENT MATERIAL
  - MARSH EXCAVATION - TO BE BACKFILLED WITH SELECT BORROW MATERIAL. NOTE: THIS IS DESIGNER'S CHOICE, CAN BE BACKFILLED WITH BORROW, OR CUT AS WELL. ITEM NUMBER 205.0500
  - ROCK EXCAVATION ITEM NUMBER 205.0200
  - REDUCED MARSH IN FILL - EXCAVATED MARSH MATERIAL IS USABLE IN FILLS OUTSIDE THE 1:1 SLOPE. MARSH IN FILL REDUCTION FACTOR = 1.00
  - REDUCED EBS IN FILL - EXCAVATED EBS MATERIAL IS USABLE IN FILLS OUTSIDE THE 1:1 SLOPE. EBS IN FILL REDUCTION FACTOR = 1.00
  - EXPANDED MARSH BACKFILL - THIS IS TO BE FILLED WITH SELECT BORROW MATERIAL. MARSH BACKFILL FACTOR = 1.00. ITEM NUMBER 208.1100
  - EXPANDED EBS BACKFILL - THIS IS TO BE FILLED WITH SELECT BORROW MATERIAL. EBS BACKFILL FACTOR = 1.00. ITEM NUMBER 208.1100
  - EXPANDED ROCK FACTOR = 1.00
  - EXPANDED FILL FACTOR = 1.25
  - EXPANDED FILL FACTOR = 1.25
  - EXPANDED FILL = (UNEXPANDED FILL - EXPANDED ROCK - REDUCED MARSH - REDUCED EBS) \* FILL FACTOR
  - EXPANDED FILL = (UNEXPANDED FILL - EXPANDED ROCK - REDUCED EBS) \* FILL FACTOR
  - EXPANDED FILL = (UNEXPANDED FILL - EXPANDED ROCK - REDUCED MARSH) \* FILL FACTOR
  - EXPANDED FILL = (UNEXPANDED FILL - EXPANDED ROCK) \* FILL FACTOR
  - THE MASS ORDNATE +/- OR -QTY CALCULATED FOR THE DIVISION, PLUS QUANTITY INDICATES AN EXCESS OF MATERIAL WITHIN THE DIVISION, MINUS INDICATES A SHORTAGE OF MATERIAL WITHIN THE DIVISION.
  - FACTORS USED TO COMPUTE ANTICIPATED WASTE AND THE COMBINED WASTE VOLUME IDENTIFIED ARE FOR GENERAL INFORMATION ONLY.
  - EXCESS SHOULDER MATERIAL & BASE COURSE EXCAVATED UNDER THE PREPARE FOUNDATION FOR ASPHALTIC SHOULDER ITEM. THE HAULING EXCESS SHOULDER MATERIAL ITEM IS USED TO HAIL THE MATERIAL FROM A SEWER ON THE PROJECT.





ASPHALTIC SURFACE PATCHING ITEMS



CATEGORY	ROADWAY	STATION	TO	STATION	TON	SPV.0195.01 ASPHALTIC SURFACE PATCHING	TON	SPV.0195.01 ASPHALTIC REPAIR	TON
0010	PROJECT ID 2210-12-70 MAINLINE USH 18	56+50	87+00	87+00	29		107		
		87+00	133+00	133+00	43		161		
		133+00	163+00	163+00	28		105		
		163+00	216+00	216+00	50		186		
		216+00	258+00	258+00	39		147		
		258+00	291+00	291+00	31		116		
		291+00	313+40	313+40	21		78		
CONTRACT TOTAL:					242		900		

RUMBLE STRIPS

CATEGORY	ROADWAY	STATION	STATION	LF	465.0475 ASPHALTIC CENTERLINE RUMBLE STRIPS	LF	SPV.0090.02 ASPHALTIC SHOULDER RUMBLE STRIPS	LF
0010	PROJECT ID 2210-12-70 MAINLINE USH 18	111+42	160+13	4871		4871	9742	
		155+15	213+29	4814		4814	9628	
		218+31	255+65	3734		3734	7468	
		250+81	269+30	849		849	1698	
CONTRACT TOTAL:					14,268		28,536	

CONCRETE CURB & GUTTER AND CURB RAMP ITEMS

CATEGORY	ROADWAY	LOCATION	LF	601.0553 CONCRETE CURB & GUTTER 4-INCH SLOPED 36-INCH TYPED	LF	601.0411 CONCRETE CURB & GUTTER 30-INCH TYPE D	LF	601.0411 CONCRETE CURB & GUTTER 30-INCH TYPE D	LF	602.0505 CURB RAMP DETECTABLE WARNING FIELD YELLOW	SF	602.0505 CURB RAMP DETECTABLE WARNING FIELD RADIAL YELLOW	SF	602.0505 CURB RAMP DETECTABLE WARNING FIELD RADIAL YELLOW	SF	602.0505 CURB RAMP DETECTABLE WARNING FIELD RADIAL YELLOW	SF	SPV.0060.07 CURB RAMP GRADING, SHAPING AND FINISHING	EACH
0010	PROJECT ID 2210-12-70 CURB RAMPS	NW QUAD	42								16							1	
		NE QUAD	39								15							1	
		SW QUAD	59															1	
		SE QUAD	36															1	
		SW QUAD	20															1	
		MED	17															1	
		OAKMONT DRIVE	16															1	
		SE QUAD	15															1	
		SW QUAD	239															1	
		MED	10															1	
		CENTURY OAK	13															1	
		CENTURY OAK	15															1	
		WOODLAND HILLS	17															1	
		NE QUAD	11															1	
		SW QUAD	10															1	
		SE QUAD	10															1	
CONTRACT TOTAL:					193		127				160		31					14	

Addendum No. 01  
ID 2210-12-70  
Revised Sheet 178  
May 2, 2023



Proposal Schedule of Items

Proposal ID: 20230509011 Project(s): 2210-12-70

Federal ID(s): WISC 2023363

SECTION: 0001

Contract Items

Alt Set ID:

Alt Mbr ID:

Proposal Line Number	Item ID Description	Approximate Quantity and Units	Unit Price	Bid Amount
0002	201.0205 Grubbing	3.000 STA	_____.	_____.
0004	203.0100 Removing Small Pipe Culverts	1.000 EACH	_____.	_____.
0006	203.0220 Removing Structure (structure) 01. C-67-073	1.000 EACH	_____.	_____.
0008	204.0115 Removing Asphaltic Surface Butt Joints	1,469.000 SY	_____.	_____.
0010	204.0120 Removing Asphaltic Surface Milling	105,900.000 SY	_____.	_____.
0012	204.0150 Removing Curb & Gutter	320.000 LF	_____.	_____.
0014	204.0155 Removing Concrete Sidewalk	223.000 SY	_____.	_____.
0016	204.0165 Removing Guardrail	3,095.000 LF	_____.	_____.
0018	204.0190 Removing Surface Drains	2.000 EACH	_____.	_____.
0020	204.0195 Removing Concrete Bases	16.000 EACH	_____.	_____.
0022	204.9060.S Removing (item description) 01. Endwall	7.000 EACH	_____.	_____.
0024	204.9060.S Removing (item description) 40. Traffic Signals USH 18 and Oak Crest Dr	1.000 EACH	_____.	_____.
0026	204.9060.S Removing (item description) 41. Loop Detector Wire & Lead-in Cable USH 18 & Oak Crest Dr	1.000 EACH	_____.	_____.
0028	205.0100 Excavation Common	1,245.000 CY	_____.	_____.
0032	211.0101 Prepare Foundation for Asphaltic Paving (project) 01. 2210-12-70	1.000 EACH	_____.	_____.



Proposal Schedule of Items

Proposal ID: 20230509011 Project(s): 2210-12-70

Federal ID(s): WISC 2023363

SECTION: 0001

Contract Items

Alt Set ID:

Alt Mbr ID:

Proposal Line Number	Item ID Description	Approximate Quantity and Units	Unit Price	Bid Amount
0034	211.0400 Prepare Foundation for Asphaltic Shoulders	295.000 STA	_____.	_____.
0036	213.0100 Finishing Roadway (project) 01. 2210-12-70	1.000 EACH	_____.	_____.
0038	305.0110 Base Aggregate Dense 3/4-Inch	1,340.000 TON	_____.	_____.
0040	305.0120 Base Aggregate Dense 1 1/4-Inch	54.000 TON	_____.	_____.
0042	305.0500 Shaping Shoulders	111.000 STA	_____.	_____.
0044	305.0504.S Hauling Excess Shoulder Material	510.000 CY	_____.	_____.
0046	455.0605 Tack Coat	16,610.000 GAL	_____.	_____.
0048	460.0105.S HMA Percent Within Limits (PWL) Test Strip Volumetrics	2.000 EACH	_____.	_____.
0050	460.0110.S HMA Percent Within Limits (PWL) Test Strip Density	3.000 EACH	_____.	_____.
0052	460.2005 Incentive Density PWL HMA Pavement	21,144.000 DOL	1.00000	21,144.00
0054	460.2007 Incentive Density HMA Pavement Longitudinal Joints	12,845.000 DOL	1.00000	12,845.00
0056	460.2010 Incentive Air Voids HMA Pavement	14,450.000 DOL	1.00000	14,450.00
0058	460.6223 HMA Pavement 3 MT 58-28 S	17,800.000 TON	_____.	_____.
0060	460.6224 HMA Pavement 4 MT 58-28 S	12,450.000 TON	_____.	_____.
0062	465.0110 Asphaltic Surface Patching	242.000 TON	_____.	_____.



Proposal Schedule of Items

Proposal ID: 20230509011 Project(s): 2210-12-70

Federal ID(s): WISC 2023363

SECTION: 0001

Contract Items

Alt Set ID:

Alt Mbr ID:

Proposal Line Number	Item ID Description	Approximate Quantity and Units	Unit Price	Bid Amount
0064	465.0120 Asphaltic Surface Driveways and Field Entrances	160.000 TON	_____.	_____.
0066	465.0315 Asphaltic Flumes	81.000 SY	_____.	_____.
0068	465.0475 Asphalt Centerline Rumble Strips 2-Lane Rural	14,268.000 LF	_____.	_____.
0070	504.0900 Concrete Masonry Endwalls	10.000 CY	_____.	_____.
0072	520.1018 Apron Endwalls for Culvert Pipe 18-Inch	6.000 EACH	_____.	_____.
0074	520.1036 Apron Endwalls for Culvert Pipe 36-Inch	2.000 EACH	_____.	_____.
0076	520.8000 Concrete Collars for Pipe	5.000 EACH	_____.	_____.
0078	521.3118 Culvert Pipe Corrugated Steel 18-Inch	25.000 LF	_____.	_____.
0080	521.3136 Culvert Pipe Corrugated Steel 36-Inch	44.000 LF	_____.	_____.
0082	522.0118 Culvert Pipe Reinforced Concrete Class III 18-Inch	64.000 LF	_____.	_____.
0084	522.1500 Pipe Cattle Pass Reinforced Concrete	96.000 LF	_____.	_____.
0086	601.0411 Concrete Curb & Gutter 30-Inch Type D	193.000 LF	_____.	_____.
0088	601.0553 Concrete Curb & Gutter 4-Inch Sloped 36-Inch Type D	127.000 LF	_____.	_____.
0090	602.0410 Concrete Sidewalk 5-Inch	2,194.000 SF	_____.	_____.
0092	602.0505 Curb Ramp Detectable Warning Field Yellow	160.000 SF	_____.	_____.



Proposal Schedule of Items

Proposal ID: 20230509011 Project(s): 2210-12-70

Federal ID(s): WISC 2023363

SECTION: 0001

Contract Items

Alt Set ID:

Alt Mbr ID:

Proposal Line Number	Item ID Description	Approximate Quantity and Units	Unit Price	Bid Amount
0094	602.0605 Curb Ramp Detectable Warning Field Radial Yellow	31.000 SF	_____.	_____.
0096	602.1500 Concrete Steps	103.000 SF	_____.	_____.
0098	606.0200 Riprap Medium	41.000 CY	_____.	_____.
0100	611.0530 Manhole Covers Type J	2.000 EACH	_____.	_____.
0102	611.2003 Manholes 3-FT Diameter	1.000 EACH	_____.	_____.
0104	611.2006 Manholes 6-FT Diameter	1.000 EACH	_____.	_____.
0106	614.0397 Guardrail Mow Strip Emulsified Asphalt	1,363.000 SY	_____.	_____.
0108	614.2300 MGS Guardrail 3	687.500 LF	_____.	_____.
0110	614.2330 MGS Guardrail 3 K	2,462.500 LF	_____.	_____.
0112	614.2350 MGS Guardrail Short Radius	163.000 LF	_____.	_____.
0114	614.2610 MGS Guardrail Terminal EAT	14.000 EACH	_____.	_____.
0116	614.2630 MGS Guardrail Short Radius Terminal	4.000 EACH	_____.	_____.
0118	618.0100 Maintenance And Repair of Haul Roads (project) 01. 2210-12-70	1.000 EACH	_____.	_____.
0120	619.1000 Mobilization	1.000 EACH	_____.	_____.
0122	624.0100 Water	27.900 MGAL	_____.	_____.



Proposal Schedule of Items

Proposal ID: 20230509011 Project(s): 2210-12-70

Federal ID(s): WISC 2023363

SECTION: 0001

Contract Items

Alt Set ID:

Alt Mbr ID:

Proposal Line Number	Item ID Description	Approximate Quantity and Units	Unit Price	Bid Amount
0124	625.0500 Salvaged Topsoil	4,585.000 SY	_____.	_____.
0126	627.0200 Mulching	4,585.000 SY	_____.	_____.
0128	628.1504 Silt Fence	6,111.000 LF	_____.	_____.
0130	628.1520 Silt Fence Maintenance	7,264.000 LF	_____.	_____.
0132	628.1530.S Silt Fence Heavy Duty	1,153.000 LF	_____.	_____.
0134	628.1535.S Silt Fence Heavy Duty Maintenance	1,153.000 LF	_____.	_____.
0136	628.1905 Mobilizations Erosion Control	2.000 EACH	_____.	_____.
0138	628.1910 Mobilizations Emergency Erosion Control	10.000 EACH	_____.	_____.
0140	628.2004 Erosion Mat Class I Type B	5,333.000 SY	_____.	_____.
0142	628.7005 Inlet Protection Type A	3.000 EACH	_____.	_____.
0144	628.7020 Inlet Protection Type D	20.000 EACH	_____.	_____.
0146	628.7504 Temporary Ditch Checks	350.000 LF	_____.	_____.
0148	628.7555 Culvert Pipe Checks	7.000 EACH	_____.	_____.
0150	628.7570 Rock Bags	203.000 EACH	_____.	_____.
0152	629.0210 Fertilizer Type B	3.000 CWT	_____.	_____.
0154	630.0200 Seeding Temporary	144.000 LB	_____.	_____.



Proposal Schedule of Items

Proposal ID: 20230509011 Project(s): 2210-12-70

Federal ID(s): WISC 2023363

SECTION: 0001

Contract Items

Alt Set ID:

Alt Mbr ID:

Proposal Line Number	Item ID Description	Approximate Quantity and Units	Unit Price	Bid Amount
0156	630.0400 Seeding Nurse Crop	41.000 LB	_____.	_____.
0158	630.0500 Seed Water	99.000 MGAL	_____.	_____.
0160	631.0300 Sod Water	2.000 MGAL	_____.	_____.
0162	631.1000 Sod Lawn	78.000 SY	_____.	_____.
0164	633.5200 Markers Culvert End	8.000 EACH	_____.	_____.
0166	634.0618 Posts Wood 4x6-Inch X 18-FT	13.000 EACH	_____.	_____.
0168	637.0620 Sign Flags Permanent Type II	2.000 EACH	_____.	_____.
0170	637.2210 Signs Type II Reflective H	58.500 SF	_____.	_____.
0172	637.2230 Signs Type II Reflective F	53.000 SF	_____.	_____.
0174	638.2102 Moving Signs Type II	13.000 EACH	_____.	_____.
0176	638.2602 Removing Signs Type II	5.000 EACH	_____.	_____.
0178	638.3000 Removing Small Sign Supports	5.000 EACH	_____.	_____.
0180	642.5401 Field Office Type D	1.000 EACH	_____.	_____.
0182	643.0300 Traffic Control Drums	26,665.000 DAY	_____.	_____.
0184	643.0420 Traffic Control Barricades Type III	4,850.000 DAY	_____.	_____.
0186	643.0705 Traffic Control Warning Lights Type A	9,700.000 DAY	_____.	_____.



Proposal Schedule of Items

Proposal ID: 20230509011 Project(s): 2210-12-70

Federal ID(s): WISC 2023363

SECTION: 0001

Contract Items

Alt Set ID:

Alt Mbr ID:

Proposal Line Number	Item ID Description	Approximate Quantity and Units	Unit Price	Bid Amount
0188	643.0715 Traffic Control Warning Lights Type C	265.000 DAY	_____.	_____.
0190	643.0900 Traffic Control Signs	20,530.000 DAY	_____.	_____.
0192	643.0910 Traffic Control Covering Signs Type I	19.000 EACH	_____.	_____.
0194	643.0920 Traffic Control Covering Signs Type II	15.000 EACH	_____.	_____.
0196	643.1050 Traffic Control Signs PCMS	71.000 DAY	_____.	_____.
0198	643.3220 Temporary Marking Line Epoxy 8-Inch	62.000 LF	_____.	_____.
0200	643.3250 Temporary Marking Line Removable Tape 8-Inch	62.000 LF	_____.	_____.
0202	643.3820 Temporary Marking Stop Line Epoxy 18-Inch	56.000 LF	_____.	_____.
0204	643.5000 Traffic Control	1.000 EACH	_____.	_____.
0206	644.1410 Temporary Pedestrian Surface Asphalt	145.000 SF	_____.	_____.
0208	644.1601 Temporary Pedestrian Curb Ramp	20.000 DAY	_____.	_____.
0210	644.1605 Temporary Pedestrian Detectable Warning Field	20.000 SF	_____.	_____.
0212	644.1810 Temporary Pedestrian Barricade	330.000 LF	_____.	_____.
0214	645.0120 Geotextile Type HR	133.000 SY	_____.	_____.
0216	646.1020 Marking Line Epoxy 4-Inch	41,311.000 LF	_____.	_____.





Proposal Schedule of Items

Proposal ID: 20230509011 Project(s): 2210-12-70

Federal ID(s): WISC 2023363

SECTION: 0001

Contract Items

Alt Set ID:

Alt Mbr ID:

Proposal Line Number	Item ID Description	Approximate Quantity and Units	Unit Price	Bid Amount
0218	646.1040 Marking Line Grooved Wet Ref Epoxy 4-Inch	47,677.000 LF	_____.	_____.
0220	646.1545 Marking Line Grooved Wet Ref Contrast Epoxy 4-Inch	553.000 LF	_____.	_____.
0222	646.3020 Marking Line Epoxy 8-Inch	291.000 LF	_____.	_____.
0224	646.3040 Marking Line Grooved Wet Ref Epoxy 8-Inch	1,768.000 LF	_____.	_____.
0226	646.3545 Marking Line Grooved Wet Ref Contrast Epoxy 8-Inch	1,974.000 LF	_____.	_____.
0228	646.5020 Marking Arrow Epoxy	41.000 EACH	_____.	_____.
0230	646.5120 Marking Word Epoxy	15.000 EACH	_____.	_____.
0232	646.6120 Marking Stop Line Epoxy 18-Inch	495.000 LF	_____.	_____.
0234	646.6320 Marking Dotted Extension Epoxy 18-Inch	23.000 LF	_____.	_____.
0236	646.7120 Marking Diagonal Epoxy 12-Inch	333.000 LF	_____.	_____.
0238	646.7420 Marking Crosswalk Epoxy Transverse Line 6-Inch	466.000 LF	_____.	_____.
0240	646.7520 Marking Crosswalk Epoxy Block Style 24-Inch	96.000 LF	_____.	_____.
0242	646.8120 Marking Curb Epoxy	42.000 LF	_____.	_____.
0244	646.8220 Marking Island Nose Epoxy	5.000 EACH	_____.	_____.



Proposal Schedule of Items

Proposal ID: 20230509011 Project(s): 2210-12-70

Federal ID(s): WISC 2023363

SECTION: 0001

Contract Items

Alt Set ID:

Alt Mbr ID:

Proposal Line Number	Item ID Description	Approximate Quantity and Units	Unit Price	Bid Amount
0246	648.0100 Locating No-Passing Zones	4.870 MI	_____.	_____.
0248	650.5500 Construction Staking Curb Gutter and Curb & Gutter	323.000 LF	_____.	_____.
0250	650.6000 Construction Staking Pipe Culverts	2.000 EACH	_____.	_____.
0252	650.8000 Construction Staking Resurfacing Reference	25,700.000 LF	_____.	_____.
0254	650.8501 Construction Staking Electrical Installations (project) 01. 2210-12-70	1.000 EACH	_____.	_____.
0256	650.9000 Construction Staking Curb Ramps	14.000 EACH	_____.	_____.
0258	650.9911 Construction Staking Supplemental Control (project) 01. 2210-12-70	1.000 EACH	_____.	_____.
0260	650.9920 Construction Staking Slope Stakes	4,500.000 LF	_____.	_____.
0262	652.0225 Conduit Rigid Nonmetallic Schedule 40 2-Inch	721.000 LF	_____.	_____.
0264	652.0235 Conduit Rigid Nonmetallic Schedule 40 3-Inch	425.000 LF	_____.	_____.
0266	652.0615 Conduit Special 3-Inch	530.000 LF	_____.	_____.
0268	652.0800 Conduit Loop Detector	1,160.000 LF	_____.	_____.
0270	653.0135 Pull Boxes Steel 24x36-Inch	6.000 EACH	_____.	_____.
0272	653.0140 Pull Boxes Steel 24x42-Inch	8.000 EACH	_____.	_____.



Proposal Schedule of Items

Proposal ID: 20230509011 Project(s): 2210-12-70

Federal ID(s): WISC 2023363

SECTION: 0001

Contract Items

Alt Set ID:

Alt Mbr ID:

Proposal Line Number	Item ID Description	Approximate Quantity and Units	Unit Price	Bid Amount
0274	653.0905 Removing Pull Boxes	17.000 EACH	_____.	_____.
0276	654.0101 Concrete Bases Type 1	12.000 EACH	_____.	_____.
0278	654.0110 Concrete Bases Type 10	1.000 EACH	_____.	_____.
0280	654.0120 Concrete Bases Type 10-Special	3.000 EACH	_____.	_____.
0282	654.0217 Concrete Control Cabinet Bases Type 9 Special	1.000 EACH	_____.	_____.
0284	655.0230 Cable Traffic Signal 5-14 AWG	519.000 LF	_____.	_____.
0286	655.0240 Cable Traffic Signal 7-14 AWG	1,642.000 LF	_____.	_____.
0288	655.0260 Cable Traffic Signal 12-14 AWG	1,362.000 LF	_____.	_____.
0290	655.0320 Cable Type UF 2-10 AWG Grounded	543.000 LF	_____.	_____.
0292	655.0515 Electrical Wire Traffic Signals 10 AWG	1,577.000 LF	_____.	_____.
0294	655.0610 Electrical Wire Lighting 12 AWG	432.000 LF	_____.	_____.
0296	655.0700 Loop Detector Lead In Cable	2,637.000 LF	_____.	_____.
0298	655.0800 Loop Detector Wire	3,820.000 LF	_____.	_____.
0300	655.0900 Traffic Signal EVP Detector Cable	935.000 LF	_____.	_____.
0302	656.0201 Electrical Service Meter Breaker Pedestal (location) 01. USH 18 and Oak Crest Dr.	1.000 EACH	_____.	_____.



Proposal Schedule of Items

Proposal ID: 20230509011 Project(s): 2210-12-70

Federal ID(s): WISC 2023363

SECTION: 0001

Contract Items

Alt Set ID:

Alt Mbr ID:

Proposal Line Number	Item ID Description	Approximate Quantity and Units	Unit Price	Bid Amount
0304	657.0100 Pedestal Bases	12.000 EACH	_____.	_____.
0306	657.0420 Traffic Signal Standards Aluminum 13-FT	1.000 EACH	_____.	_____.
0308	657.0425 Traffic Signal Standards Aluminum 15-FT	3.000 EACH	_____.	_____.
0310	657.0430 Traffic Signal Standards Aluminum 10-FT	8.000 EACH	_____.	_____.
0312	658.0173 Traffic Signal Face 3S 12-Inch	12.000 EACH	_____.	_____.
0314	658.0174 Traffic Signal Face 4S 12-Inch	6.000 EACH	_____.	_____.
0316	658.0416 Pedestrian Signal Face 16-Inch	8.000 EACH	_____.	_____.
0318	658.0500 Pedestrian Push Buttons	8.000 EACH	_____.	_____.
0320	658.5070 Signal Mounting Hardware (location) 01. USH 18 & Oak Crest Dr.	1.000 EACH	_____.	_____.
0322	659.1125 Luminaires Utility LED C	3.000 EACH	_____.	_____.
0324	659.5000.S Lamp, Ballast, LED, Switch Disposal by Contractor	27.000 EACH	_____.	_____.
0326	690.0150 Sawing Asphalt	32,128.000 LF	_____.	_____.
0328	690.0250 Sawing Concrete	193.000 LF	_____.	_____.
0330	740.0440 Incentive IRI Ride	19,460.000 DOL	1.00000	19,460.00
0332	ASP.1T0A On-the-Job Training Apprentice at \$5.00/HR	900.000 HRS	5.00000	4,500.00



Proposal Schedule of Items

Proposal ID: 20230509011 Project(s): 2210-12-70

Federal ID(s): WISC 2023363

SECTION: 0001

Contract Items

Alt Set ID:

Alt Mbr ID:

Proposal Line Number	Item ID Description	Approximate Quantity and Units	Unit Price	Bid Amount
0334	ASP.1T0G On-the-Job Training Graduate at \$5.00/HR	4,320.000 HRS	5.00000	21,600.00
0336	SPV.0060 Special 02. Exposing Existing Infrastructure Paved Area	1.000 EACH	_____	_____
0338	SPV.0060 Special 06. Exposing Existing Infrastructure Unpaved Area	7.000 EACH	_____	_____
0340	SPV.0060 Special 07. Curb Ramp Grading, Shaping, and Finishing	14.000 EACH	_____	_____
0342	SPV.0060 Special 40. Install Poles Type 10	1.000 EACH	_____	_____
0344	SPV.0060 Special 41. Install Poles Type 9 Special	1.000 EACH	_____	_____
0346	SPV.0060 Special 42. Install Poles Type 10 Special	2.000 EACH	_____	_____
0348	SPV.0060 Special 43. Install Monotube Arms 20-Ft	1.000 EACH	_____	_____
0350	SPV.0060 Special 44. Install Monotube Arms 35-Ft Type 9/10 Spec Pole	2.000 EACH	_____	_____
0352	SPV.0060 Special 45. Install Monotube Arms 45-Ft Type 9/10 Spec Pole	1.000 EACH	_____	_____
0354	SPV.0060 Special 46. Install Luminaire Arms Steel 15-Ft	3.000 EACH	_____	_____
0356	SPV.0060 Special 47. Trnsprt & Install State Furn Traffic Signal Cabinet USH 18 & Oak Crest	1.000 EACH	_____	_____
0358	SPV.0060 Special 48. Trnsprt Traffic Signal Inter Lighting Materials USH 18 & Oak Crest	1.000 EACH	_____	_____



Proposal Schedule of Items

Proposal ID: 20230509011 Project(s): 2210-12-70

Federal ID(s): WISC 2023363

SECTION: 0001

Contract Items

Alt Set ID:

Alt Mbr ID:

Proposal Line Number	Item ID Description	Approximate Quantity and Units	Unit Price	Bid Amount
0360	SPV.0060 Special 49. Trnsprt & Install State Furn EVP Heads & Confirm Lights USH 18 & Oak Crest	1.000 EACH	_____.	_____.
0362	SPV.0085 Special 01. Native Pollinator Seed Mixture No. 90A	10.000 LB	_____.	_____.
0364	SPV.0090 Special 02. Asphaltic Shoulder Rumble Strips Sinusoidal 2-Lane Rural	28,536.000 LF	_____.	_____.
0366	SPV.0195 Special 01. Asphaltic Repair	900.000 TON	_____.	_____.
Section: 0001			Total:	_____.
			Total Bid:	_____.