



Wisconsin Department of Transportation

April 28, 2023

Division of Transportation Systems Development
Bureau of Project Development
4822 Madison Yards Way, 4th Floor South
Madison, WI 53705

Telephone: (608) 266-1631
Facsimile (FAX): (608) 266-8459

NOTICE TO ALL CONTRACTORS:

Proposal #12: 2290-24-70
Caledonia – Oak Creek
Linwood Rd to E Oakwood Rd
STH 38
Racine County

Letting of May 9, 2023

This is Addendum No. 02, which provides for the following:

Special Provisions:

Revised Special Provisions	
Article No.	Description
6	Utilities

Added Special Provisions	
Article No.	Description
52	Notice to Contractor – Additional Overhead/Underground Facilities

Plan Sheets:

Revised Plan Sheets	
Plan Sheet	Plan Sheet Title (brief description of changes to sheet)
38	Revised/clarified storm sewer information

The responsibility for notifying potential subcontractors and suppliers of these changes remains with the prime contractor.

Sincerely,

Mike Coleman

Proposal Development Specialist
Proposal Management Section

ADDENDUM NO. 02

2290-24-70

April 28, 2023

Special Provisions

6. Utilities.

Insert the following paragraph between paragraphs three and four at the beginning of the article:

Some of the utility work described below is dependent on prior work being performed by the contractor at a specific site. In such situations, provide the engineer and the affected utility a good faith notice of when the utility is to start work at the site. Provide this notice 14 to 16 calendar days in advance of when the prior work will be completed, and the site will be available to the utility owner. Follow-up with a confirmation notice to the engineer and the utility owner not less than three working days before the site will be ready for the utility owner to begin its work.

*Replace the last paragraph of section titled **AT&T Local Network – Communication Line** with the following:*

No conflict is anticipated but AT&T Wisconsin Local Network has underground facilities close to where riprap is being installed near Station 241+00. Arrange for a site watch to be present to mark the utility lines and monitor the work and provide advance notification to AT&T Local Network prior to beginning the riprap work.

*Replace the last paragraph of section titled **AT&T Wisconsin – Communication Line** with the following:*

No conflict is anticipated but AT&T Wisconsin has underground facilities in close proximity to the drainage structures on the east side of STH 38 that are being replaced near Station 459+00. Arrange for an observer to be on site when working to replace the drainage structures and provide advance notification to AT&T Wisconsin prior to beginning the drainage structure work.

*Delete entire section titled **Caledonia Storm Sewer Utility Commission – Storm Sewer**.*

*Delete entire section titled **City of Oak Creek – Storm Water Utility**.*

*Delete entire section titled **City of Oak Creek – Street Lighting**.*

*Replace the last paragraph of section titled **Spectrum – Communication Line** with the following:*

No conflict is anticipated but Spectrum has underground facilities close to where riprap is being installed near station 241+00 and station 423+36, LT. Arrange for a site watch to be present to mark the utility lines and monitor the work and provide advance notification to Spectrum prior to beginning the riprap work.

Replace the last paragraph of section titled **Sprint Communications CO LP – Communication Line** with the following:

No conflicts are anticipated. When excavating for and installing the riprap near Station 241+00, arrange for a site watch to be present to mark the utility lines and monitor the work and provide advance notification to Sprint Communications prior to beginning the riprap work.

Replace the 4th bullet point within the **TDS Metrocom LLC – Communication Line** section of the article for proposed facility adjustments to be completed prior to construction with the following:

- Remove from service/discontinue in place the existing utility line that runs from Station 458+04, 71' LT, to Station 457+98, 34' LT, to Station 465+00, 39' LT.

Replace the 1st bullet point within the **TDS Metrocom LLC – Communication Line** section of the article for proposed facility adjustments to be completed during construction with the following:

- Manhole to be removed at Station 457+98, 34' LT. Contractor to provide TDS Metrocom notification prior to starting work on the storm sewer crossing at Station 458+96. TDS Metrocom will remove the old manhole and restore the pavement concurrently with the storm sewer work. Removing the manhole and restoring the pavement is estimated to take five working days.

Insert the following paragraph after the **WE Energies – Electric** proposed facility adjustment bullet points:

WE Energies Electric has facilities within the construction limits. It is imperative that the highway contractor contact WE Energies if removing any electrical underground cables, to verify that they have been discontinued and carry no electrical current. The contractor must not assume that unmarked facilities have been discontinued. At no time is it acceptable to push, pull, cut, or drill an unmarked facility without explicit consent from WE Energies. The contractor must call the WE Energies 24-hour Dispatch lines to arrange for this verification. The WE Energies Electric Dispatch number is 1 (800) 662-4797.

Delete the existing **WE Energies – Gas** proposed facility adjustment information and replace it with the following:

Proposed facility adjustments/relocations to resolve conflicts and be completed prior to construction are as follows:

- Place new gas main along the west side of STH 38 from approximately station 458+57 to 459+35, 52' LT approximately 8' to 8.5' deep

Delete entire section titled **WisDOT – Street Lighting**.

Delete entire section titled **WisDOT – Traffic Signals**.

52. Notice to Contractor – Additional Overhead/Underground Facilities.

There are overhead/underground facilities located within the project limits. There are no facility adjustments anticipated for this project. Coordinate construction activities with a call to Digger's Hotline or a direct call to the owners of facilities in the area. Use caution to ensure the integrity of the facilities.

Known facilities within the project are as follows:

Caledonia Storm Sewer Utility Commission – Storm Sewer has underground facilities within the construction limits. The existing facilities are located as follows:

- Storm sewer in the northwest quadrant of the STH 38/Nicholson Road intersection

City of Oak Creek – Storm Water Utility has facilities within the construction limits. The existing facilities are located as follows:

- Storm sewer along the south side of Elm Road and a crossing of Elm Road along the east side of STH 38 from the median island between STH 38 and the Service Road to the southeast quadrant of the intersection.
- Storm sewer along the east side of STH 38 from Elm Road to approximately Station 461+70.
- Storm sewer along the west side of STH 38 from the southwest quadrant of Oakview Parkway to approximately Station 466+00.

City of Oak Creek – Street Lighting has facilities within the construction limits. The existing facilities are located as follows:

- Streetlights along the south side of Elm Road.
- Streetlights along the north and south sides of Oakview Parkway.

WisDOT – Street Lighting has underground and overhead facilities within the construction limits. The existing facilities are located as follows:

- At the STH 38/CTH G/River Road signalized intersection.
- At the STH 38/7 Mile Road signalized intersection.

The WisDOT street lighting at both intersections will be replaced as part of the project.

WisDOT – Traffic Signals has underground and overhead facilities within the construction limits. The existing facilities are located as follows:

- At the STH 38/CTH G/River Road signalized intersection.
- At the STH 38/7 Mile Road signalized intersection.

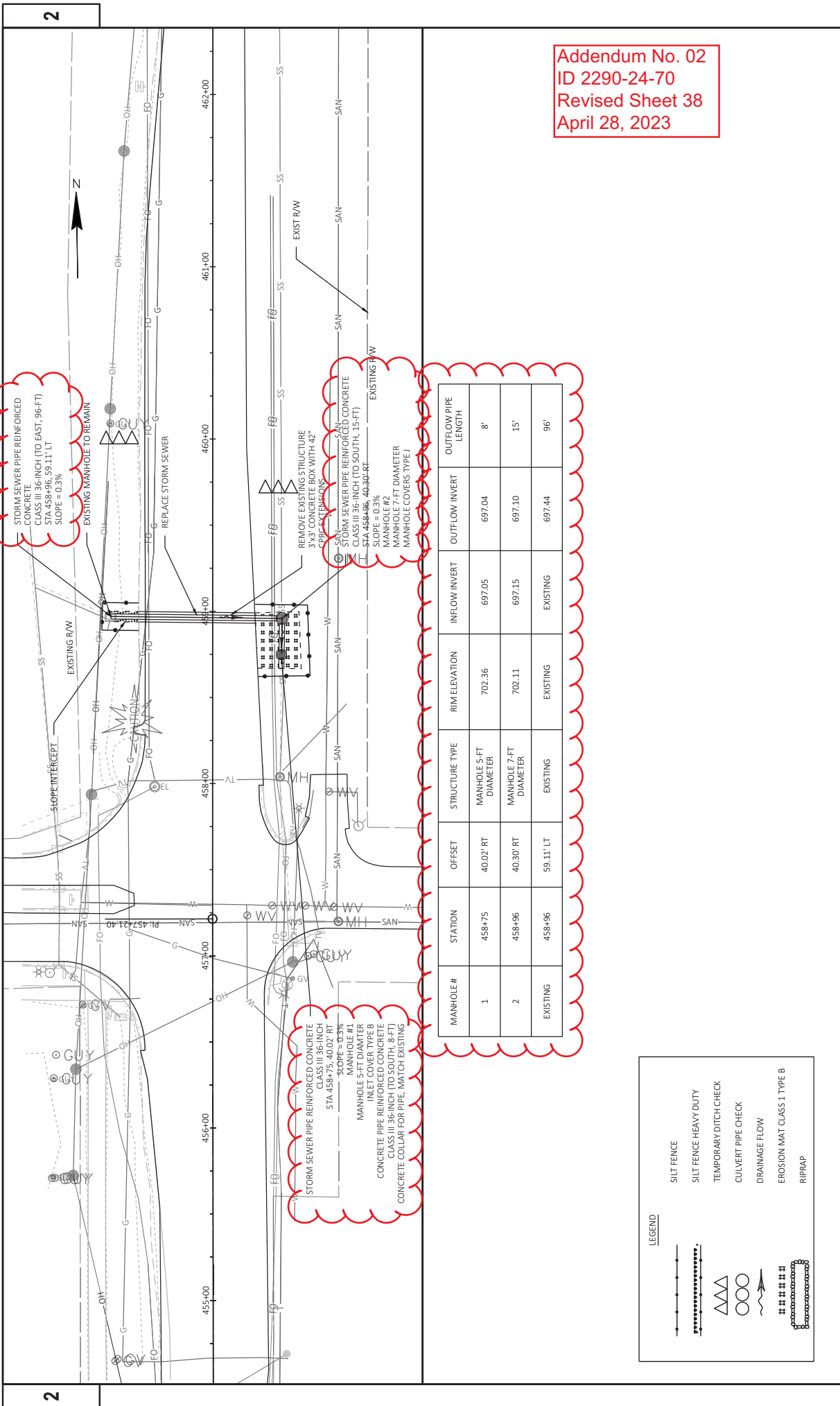
The WisDOT traffic signals at both intersections will be replaced as part of the project.

Plan Sheets

The following 8½ x 11-inch sheets are attached and made part of the plans for this proposal:

Revised: 38

END OF ADDENDUM



Addendum No. 02
 ID 2290-24-70
 Revised Sheet 38
 April 28, 2023

STORM SEWER PIPE REINFORCED CONCRETE CLASS III 36-INCH (TO EAST, 96-FT) STA 458+96, 59.11' LT SLOPE = 0.3%
 EXISTING MANHOLE TO REMAIN

REMOVE EXISTING STRUCTURE CONCRETE COLLAR WITH 42" SANITARY MANHOLE
 STORM SEWER PIPE REINFORCED CONCRETE CLASS III 36-INCH (TO SOUTH, 15-FT) STA 458+96, 40.30' RT SLOPE = 0.3%
 MANHOLE #2
 MANHOLE 7-FT DIAMETER
 MANHOLE COVERS TYPE J

STORM SEWER PIPE REINFORCED CONCRETE CLASS III 36-INCH (TO EAST, 96-FT) STA 458+75, 40.02' RT SLOPE = 0.3%
 MANHOLE #1
 INLET COVER TYPE B
 CONCRETE PIPE REINFORCED CONCRETE CLASS III 36-INCH (TO SOUTH, 8-FT) STA 458+75, 40.02' RT SLOPE = 0.3%
 CONCRETE COLLAR FOR PIPE, MATCH EXISTING

MANHOLE #	STATION	OFFSET	STRUCTURE TYPE	RIM ELEVATION	INFLOW INVERT	OUTFLOW INVERT	OUTFLOW PIPE LENGTH
1	458+75	40.02' RT	MANHOLE 5-FT DIAMETER	702.36	697.05	697.04	8'
2	458+96	40.30' RT	MANHOLE 7-FT DIAMETER	702.11	697.15	697.10	15'
EXISTING	458+96	59.11' LT	EXISTING	EXISTING	EXISTING	697.44	96'

