



Wisconsin Department of Transportation

Division of Transportation Systems Development

Bureau of Project Development
4822 Madison Yards Way, 4th Floor South
Madison, WI 53705

Telephone: (608) 266-1631
Facsimile (FAX): (608) 266-8459

July 24, 2023

NOTICE TO ALL CONTRACTORS:

Proposal #04: 5721-00-76, WISC 2023588
T Jamestown, Woodland Lane
Menomonie River Bridge B-22-0301
Loc Str
Grant County

Letting of August 8, 2023

This is Addendum No. 01, which provides for the following:

Plan Sheets:

Revised Plan Sheets	
Plan Sheet	Plan Sheet Title (brief description of changes to sheet)
36	West Abutment Details (information was not legible)
41	Superstructure, Cross Section & Details (information was not legible)
42	Single Slope Parapet 42SS (information was not legible)

The responsibility for notifying potential subcontractors and suppliers of these changes remains with the prime contractor.

Sincerely,

Mike Coleman

Proposal Development Specialist
Proposal Management Section

END OF ADDENDUM

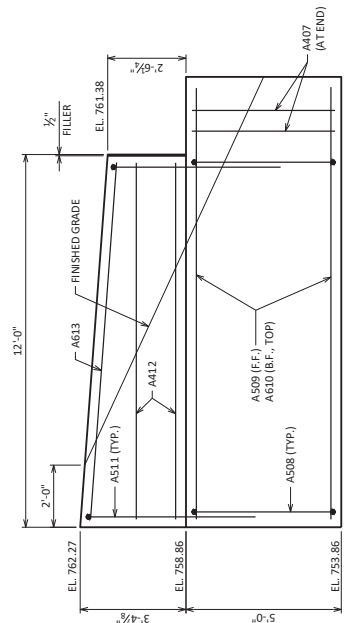
LEGEND

- ▲ CONST. JOINT: KEYWAY FORMED BY A BEVELED 2x6.
- OPTIONAL CONST. JOINT KEYWAY FORMED BY BEVELED 2x6.
- △ PIPE UNDERDRAIN WRAPPED (6-INCH); SLOPE 0.5% MIN. TO SUITABLE DRAINAGE. HIGH POINT EL. 753.95. ROBERT SHIELD REQUIRED AT ENDS. SEE DETAIL ON SHEET 4.
- 1/2" FILLER TO EXTEND FROM ABUTMENT SEAT TO TOP OF CONCRETE PARAPET (INCLUDED IN WING LENGTH). SEAL ALL EXPOSED HORIZ. & VERT. SURFACES OF 1/2" FILLER WITH 18" (MIN.) RUBBERIZED MEMBRANE WATERPROOFING. MEMBRANE TO HOLD 3/4" BELOW SURFACE OF CONCRETE. EXTEND SEALER 3" BELOW GUTTER LINE AT INSIDE FACE.
- 18" (MIN.) RUBBERIZED MEMBRANE WATERPROOFING SEAL ALL HORIZ. & VERT. JOINTS AT BACKFACE.
- BARS @ 1'-0" CTRS. BARS MAY BE PLACED AFTER CONCRETE IS POURED BUT BEFORE INITIAL SET HAS TAKEN PLACE. (EMBED 1' 0" INTO CONC.)

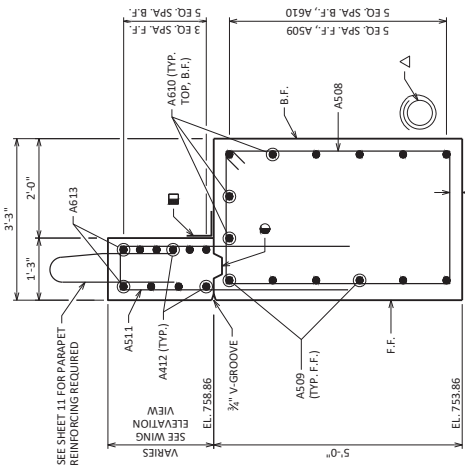
UNCOATED: 1,540 LBS
COATED: 1,580 LBS

WEST ABUTMENT BILL OF BARS

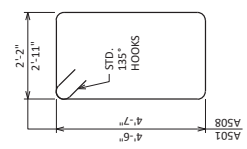
BAR MARK	NO. REQD	LENGTH	BENT	COAT	LOCATION
A501	33	14'-0"	X		LOWER BODY - STIRRUPS - VERT.
A402	4	28'-0"	X		LOWER BODY - PILES - SPIRAL
A403	8	2'-3"			LOWER BODY - PILES - VERT.
A604	11	26'-2"			LOWER BODY - F.F. - TOP, BOT. - HORIZ.
A805	7	28'-9"	X		LOWER BODY - B.F. - HORIZ.
A506	25	2'-0"		X	LOWER BODY - DOWELS - VERT.
A407	4	4'-7"			LOWER WINGS - VERT. - ENDS
A508	26	15'-8"	X		LOWER WINGS - STIRRUPS - VERT.
A509	12	14'-2"		X	LOWER WINGS - F.F. - HORIZ.
A810	16	14'-2"		X	LOWER WINGS - B.F. - TOP - HORIZ.
A511	34	11'-2"	X		UPPER WINGS - VERT.
A412	16	11'-7"		X	UPPER WINGS - HORIZ.
A613	4	11'-7"		X	UPPER WINGS - TOP - HORIZ.



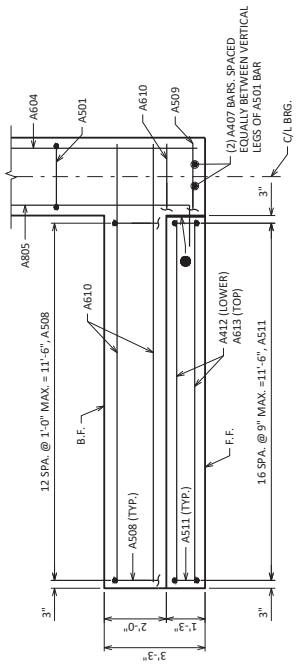
WING 1 ELEVATION
(LOOKING AT FRONT FACE)
(WING 2 SIMILAR)



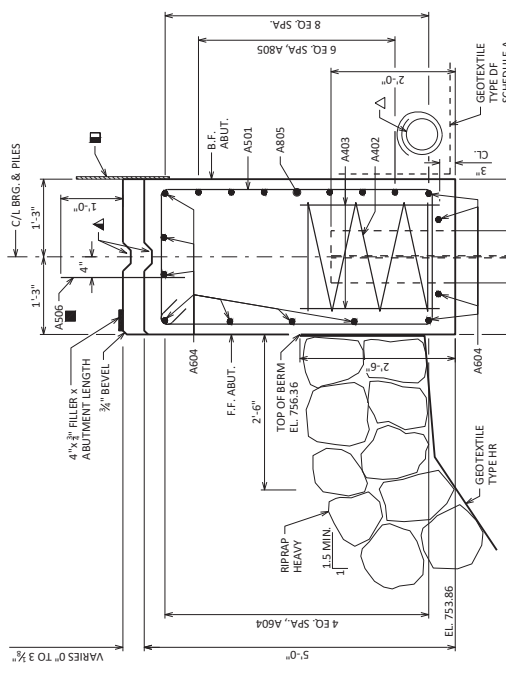
TYPICAL WING SECTION



SECTION THRU BODY



WING 1 PLAN
(WING 2 SIMILAR)



Addendum No. 01
ID 5721-00-76
Revised Sheet 36
July 24, 2023

NO.	DATE	REVISION	BY
STATE OF WISCONSIN DEPARTMENT OF TRANSPORTATION			
STRUCTURE B-22-301			
DESIGNED BY	CHKD	DATE	BY
CRS	DTH	10/20	KRB
WEST ABUTMENT DETAILS			36
SHEET 5			SCALE =

SUPERSTRUCTURE BILL OF BARS

COATED: 31,770 LBS

STATE PROJECT NUMBER
5721-00-76

NOTES
TOP TRANSVERSE BARS IN SLAB SHALL BE SUPPORTED BY INDIVIDUAL BAR CHAIRS AT APPROXIMATELY 3'-0" CENTERS EACH WAY. BOTTOM LONGITUDINAL BARS SHALL BE SUPPORTED BY CONTINUOUS BAR CHAIRS AT APPROXIMATELY 4'-0" CENTERS.
ALL SLAB THICKNESS DIMENSIONS ARE MINIMUM. ANY TOLERANCES NECESSARY TO CORRECT CONSTRUCTION DISCREPANCIES ARE TO BE PLUS (+).
LEGEND
3/4" V-GROOVE REQ'D EXTEND TO 6" FROM F.F. OF ABUT. DIAPHRAGMS.

BAR MARK	NO. RECD	LENGTH	BENT	COAT	LOCATION
S801	166	26'-2"	X	X	SLAB - TRANSVERSE - TOP & BOT.
S802	164	5'-0"	X	X	SLAB - TRANSVERSE - TOP
S803	56	26'-6"	X	X	SLAB - LONG. - BOTTOM
S804	58	44'-4"	X	X	SLAB - LONG. - BOTTOM
S805	64	24'-5"	X	X	SLAB - LONG. - TOP
S1006	32	38'-0"	X	X	SLAB - LONG. - TOP
S1007	31	13'-0"	X	X	SLAB - LONG. - TOP
S808	54	7'-5"	X	X	ABUT. DIAPHRAGM - VERT.
S809	4	26'-2"	X	X	ABUT. DIAPHRAGM - HORIZ.
S510	248	4'-5"	X	X	PARAPET - VERT.
S511	248	6'-8"	X	X	PARAPET - VERT.
S512	32	42'-3"	X	X	PARAPET - HORIZ.

SURVEY TOP OF SLAB ELEVATIONS

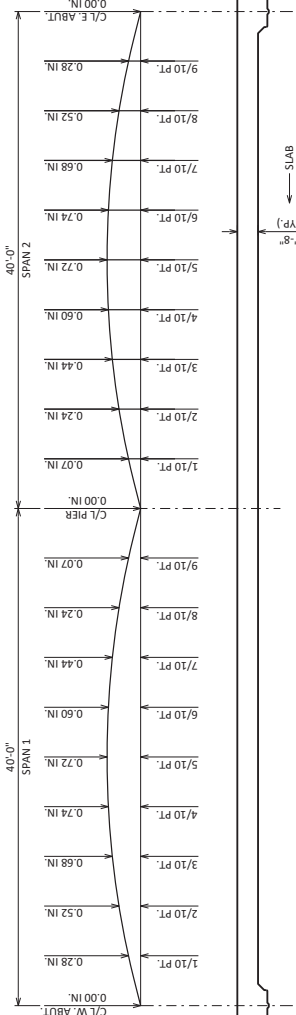
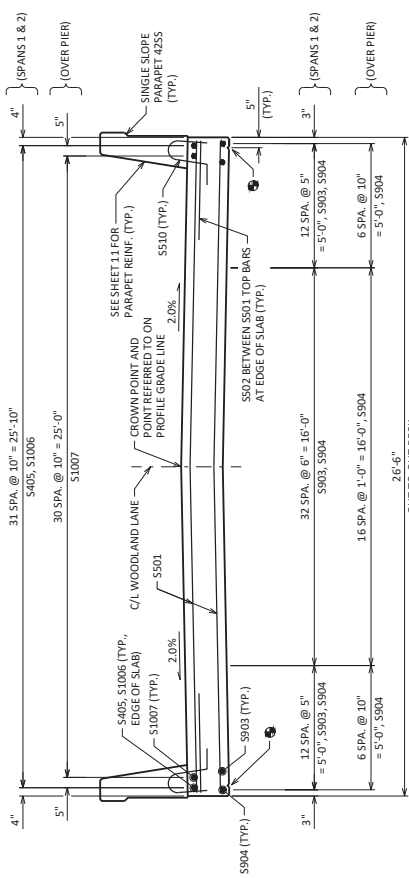
LOCATION	W. ABUT	S10 P.T.	PIER	S10 P.T.	E. ABUT
NORTH GUTTER					
CROWN OR R/L					
SOUTH GUTTER					

PRIOR TO RELEASING SLAB FALSEWORK, TAKE TOP OF DECK ELEVATIONS AT THE C/L OF ABUTMENTS, THE C/L OF PIER, AND AT 5/10 P.TS. TO VERIFY CAMBER. TAKE ELEVATIONS ALONG GUTTER LINES AND CROWN OR R/L. RECORD THE ELEVATIONS IN THE ABOVE TABLE FOR THE "AS BUILT" PLANS.

TOP OF DECK ELEVATIONS

LOCATION	NORTH EDGE OF DECK 13.25' LT *		CAL BRIDGE		SOUTH EDGE OF DECK 13.25' RT *	
	STATION	ELEV.	STATION	ELEV.	STATION	ELEV.
CAL BRG. W. ABUT.	9+56.00	761.30	9+56.00	761.54	9+56.00	761.30
0.1 L POINT	9+60.00	761.02	9+60.00	761.26	9+60.00	761.02
0.2 L POINT	9+64.00	760.76	9+64.00	761.00	9+64.00	760.76
0.3 L POINT	9+68.00	760.51	9+68.00	760.75	9+68.00	760.51
0.4 L POINT	9+72.00	760.26	9+72.00	760.50	9+72.00	760.26
0.5 L POINT	9+76.00	760.02	9+76.00	760.26	9+76.00	760.02
0.6 L POINT	9+80.00	759.80	9+80.00	760.04	9+80.00	759.80
0.7 L POINT	9+84.00	759.58	9+84.00	759.82	9+84.00	759.58
0.8 L POINT	9+88.00	759.37	9+88.00	759.61	9+88.00	759.37
0.9 L POINT	9+92.00	759.17	9+92.00	759.41	9+92.00	759.17
C/L PIER	9+96.00	758.98	9+96.00	759.22	9+96.00	758.98
0.1 L POINT	10+00.00	758.80	10+00.00	759.04	10+00.00	758.80
0.2 L POINT	10+04.00	758.62	10+04.00	758.86	10+04.00	758.62
0.3 L POINT	10+08.00	758.46	10+08.00	758.70	10+08.00	758.46
0.4 L POINT	10+12.00	758.31	10+12.00	758.55	10+12.00	758.31
0.5 L POINT	10+16.00	758.16	10+16.00	758.40	10+16.00	758.16
0.6 L POINT	10+20.00	758.03	10+20.00	758.27	10+20.00	758.03
0.7 L POINT	10+24.00	757.90	10+24.00	758.14	10+24.00	757.90
0.8 L POINT	10+28.00	757.78	10+28.00	758.02	10+28.00	757.78
0.9 L POINT	10+32.00	757.67	10+32.00	757.91	10+32.00	757.67
CAL BRG. E. ABUT.	10+36.00	757.57	10+36.00	757.81	10+36.00	757.57

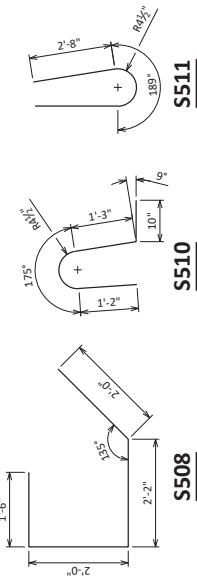
ELEVATIONS SHOWN ARE FINISHED GRADE ELEVATIONS.
* DECK ELEVATIONS AT THE INSIDE FACE OF PARAPET (13.00' L & R) ARE THE SAME AS AT OUTSIDE EDGE OF DECK (DECK LEVEL UNDER PARAPET). SEE "SINGLE SLOPE PARAPET 42.55" SHEET FOR DETAILS.



CAMBER AND SLAB THICKNESS DIAGRAM

CAMBER SHOWN IS BASED ON 3 TIMES DEAD LOAD DEFLECTIONS. CAMBER SHOWN IS FOR THE UNFINISHED SURFACE OF THE SLAB. DEFLECTION AND FUTURE CREEP, CAMBER DOES NOT INCLUDE ALLOWANCE FOR FORM SETTLEMENT. PARAPETS, PLACED ON TOP OF THE SLAB SHALL BE POURED AFTER FALSEWORK HAS BEEN RELEASED. TO DETERMINE FALSEWORK ELEVATION AT EDGE OF SLAB, CROWN OR REFERENCE LINE FOLLOW THIS PROCEDURE: LESS SLAB THICKNESS PLUS CAMBER EQUALS TOP OF SLAB FALSEWORK ELEVATION.

TO DETERMINE FALSEWORK ELEVATION AT EDGE OF SLAB, CROWN OR REFERENCE LINE FOLLOW THIS PROCEDURE:
LESS SLAB THICKNESS PLUS CAMBER EQUALS TOP OF SLAB FALSEWORK ELEVATION.



Addendum No. 01
ID 5721-00-76
Revised Sheet 41
July 24, 2023

REVISION BY DATE
STATE OF WISCONSIN
DEPARTMENT OF TRANSPORTATION
STRUCTURE B-22-301
DESIGNED BY: RRB
CHECKED BY: DTH
DATE: LXC
SHEET 10
SUPERSTRUCTURE CROSS SECTION & DETAILS
41

SINGLE SLOPE PARAPET 4Z5S

COATED: 1, 510 LBS

BAR MARK	NO. REQ'D W. ABUT.	NO. REQ'D E. ABUT.	LENGTH	BENT	COAT	LOCATION
R501	10	4	5'-10"	X	X	PARAPET - VERT.
R502	10	4	6'-8"	X	X	PARAPET - VERT.
R503	24	24	3'-0"	X	X	PARAPET - VERT.
R504	34	34	5'-7"	X	X	PARAPET - VERT.
R505	10	10	6'-5"	X	X	PARAPET - VERT.
R506	12	12	6'-6"	X	X	PARAPET - VERT.
R507	2	0	11'-6"	X	X	PARAPET - VERT.
R508	2	0	11'-6"	X	X	PARAPET - HORIZ. - WINGS 1 & 2
R509	10	0	11'-7"	X	X	PARAPET - HORIZ. - WINGS 1 & 2
R510	4	0	11'-7"	X	X	PARAPET - HORIZ. - WINGS 1 & 2
R511	0	2	9'-6"	X	X	PARAPET - HORIZ. - WINGS 3 & 4
R512	0	10	9'-7"	X	X	PARAPET - HORIZ. - WINGS 3 & 4
R513	0	4	9'-7"	X	X	PARAPET - HORIZ. - WINGS 3 & 4

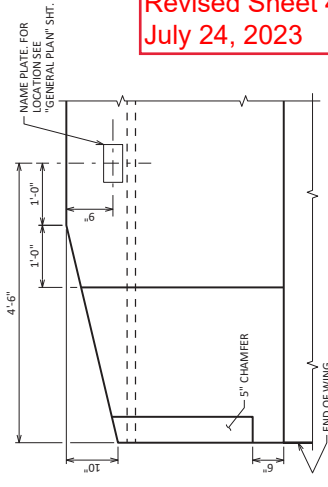
▲ LENGTH SHOWN FOR BARS IN AVERAGE LENGTH AND SHOULD ONLY BE USED FOR BAR WEIGHT CALCULATIONS. SEE BAR SERIES TABLE FOR ACTUAL LENGTHS.

BAR SERIES TABLE

BUNDLE AND TAG EACH SERIES SEPARATELY.

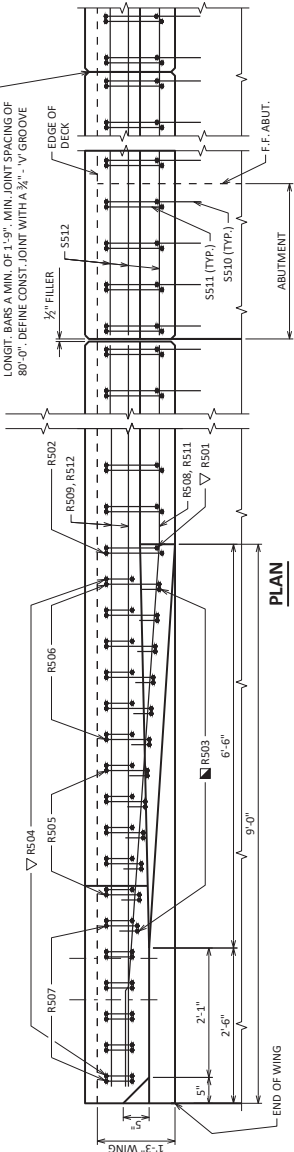
BAR MARK	NO. REQ'D	LENGTH
R507	4 SERIES OF 6	4'-9" TO 6'-1"

Addendum No. 01
ID 5721-00-76
Revised Sheet 42
July 24, 2023



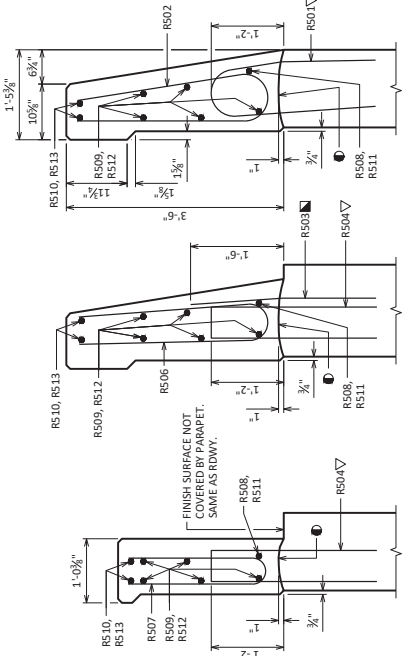
PARAPET END TREATMENT DETAIL
LOOKING AT INSIDE FACE OF PARAPET

OPTIONAL CONSTRUCTION JOINTS IN THE PARAPETS MAY BE USED, BUT MUST BE THROUGH THE JOINT LAP. LONGEST BARS A MIN. OF 1'-9". MIN. JOINT SPACING OF 80'-0". DEFINE CONST. JOINT WITH A 3/4" V GROOVE.



PLAN

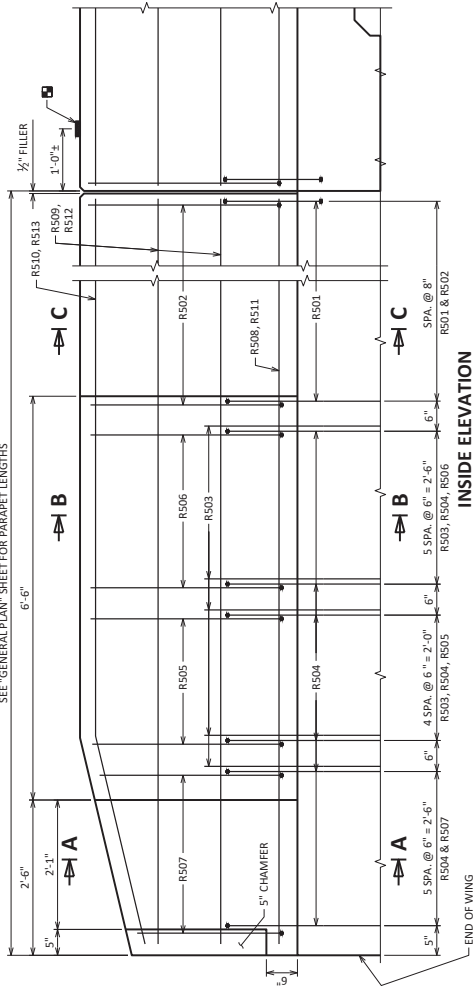
WING 2 CORNER SHOWN, OTHERS SIMILAR



SECTION C-C

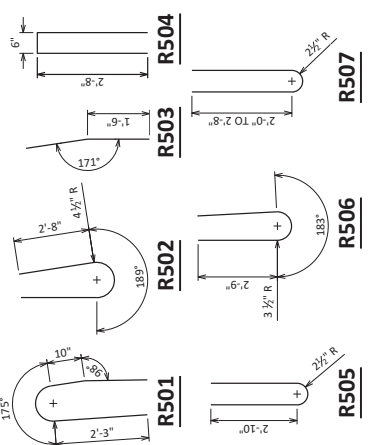
SECTION B-B

SECTION A-A



INSIDE ELEVATION

WING 2 CORNER SHOWN, OTHERS SIMILAR



LEGEND

- CONST. JOINT - STRIKE OFF AS SHOWN.
- R503 BARS MAY BE PLACED AFTER CONCRETE IS POURED BUT BEFORE INITIAL SET HAS TAKEN PLACE. BARS CORRECTLY ALONG TRANSITION OF PARAPET.
- ▽ R501 AND R504 BARS TO BE TIED TO WING STEEL BEFORE WING IS POURED.
- BENCH MARK CAP (WHEN SUPPLIED).

NO.	DATE	REVISION	BY

STATE OF WISCONSIN
DEPARTMENT OF TRANSPORTATION

STRUCTURE **B-22-301**
DESIGNED BY
DRAWN BY
CHECKED BY
DTH LKCD
RRB

SINGLE SLOPE
PARAPET 4Z5S

SHEET 11

42

SECTION THRU PARAPET ON DECK

SCALE =