



# Wisconsin Department of Transportation

## Division of Transportation Systems Development

Bureau of Project Development  
4822 Madison Yards Way, 4<sup>th</sup> Floor South  
Madison, WI 53705

August 21, 2023

Telephone: (608) 266-1631  
Facsimile (FAX): (608) 266-8459

### NOTICE TO ALL CONTRACTORS:

**Proposal #05: 1009-37-01**  
**State Wide Tree Clearing**  
**Various Counties (NER & NCR)**  
**NON-HWY**  
**Statewide**

### Letting of September 12, 2023

This is Addendum No. 01, which provides for the following:

#### Special Provisions:

Revised Special Provisions	
Article No.	Description
3	Consideration of Proposals (Indefinite Delivery/Indefinite Quantity).
4	Prosecution and Progress.
5	Traffic.
7	Utilities.
22	Construction Over or Adjacent to Navigable Waters.

Added Special Provisions	
Article No.	Description
30	Work By Others – Site 5.

Deleted Special Provisions	
Article No.	Description
8	Information to Bidders, U.S. Army Corps of Engineers Section 404 Permit – Site 1.
13	Information to Bidders, WPDES Transportation Construction General Permit (TCGP) for Storm Water Discharges – Site 1.
24	Public Convenience and Safety.
27	Shoulder Closure on Divided Roadway, Item SPV.0060.03.

**Schedule of Items:**

<b>Revised Bid Item Quantities</b>					
Bid Item	Item Description	Unit	Proposal Total Prior to Addendum	Proposal Quantity Change (-)	Proposal Total After Addendum
201.0105	Clearing	STA	70	-38	32
SPV.0060.01	Semi-Permanent Restoration	EACH	11	-3	8
SPV.0060.04	Work on Shoulder or Parking Lane Undivided Roadway	EACH	8	-2	6
SPV.0060.05	Single Lane Closure With Bi-Directional Traffic	EACH	4	-1	3

<b>Deleted Bid Item Quantities</b>					
Bid Item	Item Description	Unit	Proposal Total Prior to Addendum	Proposal Quantity Change (-)	Proposal Total After Addendum
SPV.0060.03	Shoulder Closure on Divided Roadway	EACH	1	-1	0

**Plan Sheets:**

<b>Revised Plan Sheets</b>	
Plan Sheet	Plan Sheet Title (brief description of changes to sheet)
1	Title Sheet (removed hatching and shading of the counties for sites that have not been cleared through utility coordination)
14	Project Overviews (removed the site information for sites that have not been cleared through utility coordination)
15	Project Overviews (removed the site information for sites that have not been cleared through utility coordination)
29	Removal Plan – Site 6 (added clearing location and changed hatching pattern for clearing)
42	Miscellaneous Quantities (removed the site information for sites that have not been cleared through utility coordination)
43	Miscellaneous Quantities (removed the site information for sites that have not been cleared through utility coordination)

<b>Deleted Plan Sheets</b>	
Plan Sheet	Plan Sheet Title (brief description of why sheet was deleted)
3	Project Contacts – Site 1 (site not cleared through utility coordination)
5	Project Contacts – Site 3 (site not cleared through utility coordination)
6	Project Contacts – Site 4 (site not cleared through utility coordination)
16	Project Overviews (sites not cleared through utility coordination)
21	Tree Clearing – Lily Bay Creek – Site 4 (site not cleared through utility coordination)
22	Tree Clearing – Geisel Creek – Site 4 (site not cleared through utility coordination)
23	Tree Clearing – Logan Creek – Site 4 (site not cleared through utility coordination)
24	Tree Clearing – Hibbard Creek – Site 4 (site not cleared through utility coordination)
44 – 59	Plan and Profile – Site 1 (site not cleared through utility coordination)
60	Plan and Profile: CTH C – Site 1 (site not cleared through utility coordination)
61	Plan and Profile: River St (East) – Site 1 (site not cleared through utility coordination)
62	Plan and Profile: Elm Ave – Site 1 (site not cleared through utility coordination)

63	Plan and Profile: East Ave – Site 1 (site not cleared through utility coordination)
64	Plan and Profile: Pearl Ave – Site 1 (site not cleared through utility coordination)
65	Plan and Profile: Jones Ave – Site 1 (site not cleared through utility coordination)
66	Plan and Profile: CTH H – Site 1 (site not cleared through utility coordination)
67	Plan and Profile: Crandon Ave – Site 1 (site not cleared through utility coordination)
69 – 70	Plan – Site 3 (site not cleared through utility coordination)
71	Plan and Profile: Clark Dr – Site 3 (site not cleared through utility coordination)
72	Plan and Profile: Bus 29/CTH MMM – Site 3 (site not cleared through utility coordination)

The responsibility for notifying potential subcontractors and suppliers of these changes remains with the prime contractor.

Sincerely,

*Mike Coleman*

Proposal Development Specialist  
Proposal Management Section

**ADDENDUM NO. 01**

**1009-37-01**

**August 21, 2023**

**Special Provisions**

**3. Consideration of Proposals (Indefinite Delivery/Indefinite Quantity).**

*Replace table under section titled **Estimated Quantities** with the following:*

Bid Item	Unit	Current Contract Amount	Minimum	Maximum
201.0105	STA	32 STA	25 STA	300 STA
201.0115	ACRE	18 ACRE	10 ACRE	40 ACRE
201.0120	ID	48 ID	24 ID	75 ID

**4. Prosecution and Progress.**

*Replace table under section titled **Coordination** with the following:*

SITE	SOURCE WISDOT PROJECT ID	COUNTY	HIGHWAY
2	9155-05-71	LANGLADE	STH 55
5	4150-14-71	DOOR	STH 57
6	1210-18-71	BROWN	STH 172
7	6230-20-71	OUTAGAMIE	STH 54
8	6430-20-71	OUTAGAMIE	STH 76
9	1130-44-73	OUTAGAMIE	IH 41
10	6540-11-71	WINNEBAGO	STH 91
11	1225-10-72	MANITOWOC	IH 43

*Remove Site 1 and Site 4 information under section titled Fish Spawning.*

**5. Traffic.**

*Remove Site 1 information under section titled **Area-Specific Traffic**.*

**7. Utilities.**

*Replace entire article language with the following:*

This contract does not come under the provision of Administrative Rule Trans 220.

There are underground and overhead utility facilities located within the project limits. Coordinate construction activities with a call to Diggers Hotline and/or a direct call to the utilities that have facilities in the area as required per statutes.

Some of the utility work described below may be within the limits of this project and occur during the clearing work. In such situations, coordinate with the engineer and the affected utility such that the clearing work for this project is completed as required and will not result in significant utility delays for the future construction project for which this clearing work is being performed. For situations where the engineer has determined that the utility work will be delayed, provide a 14 to 16 calendar day advance notice of when the clearing work will be completed, and the site will be available to the utility owner. Follow-up with a confirmation notice to the engineer and the utility not less than three working days before the site will be ready for the utility to begin and/or resume its work

Additional detailed information regarding the location of utility facilities is available at the region WisDOT office during normal working hours.

stp-107-066 (20080501)

## **SITE 2**

The following utility owners have facilities within the project limits; however, facilities are not known to exist in the tree clearing areas:

- **Frontier Communications of WI LLC - Communication Line**
- **Wittenberg Telephone Company - Communication Line**
- **Wisconsin Public Service Corporation – Electricity**

## **SITE 5**

### **Baileys Harbor Wastewater – Sanitary Sewer**

Baileys Harbor Wastewater has underground facilities located in the roadway pavement for the entire length of the project.

Baileys Harbor Wastewater has an existing sanitary sewer lateral that extends southeast from a sanitary manhole at Station 828+30, 18' LT and branches into two laterals servicing two buildings on the southeast side of STH 57. Where the lateral branches off in to two, the southern lateral will be bulkheaded at the branch point and discontinued in place. The northern lateral will remain in place. A new lateral will be installed southwest of the existing manhole at Station 827+54, 18' LT with a blind connection at the existing sanitary sewer main and then extending perpendicular from the main southeast to a bend at Station 827+55, 64' RT and connecting to an existing cleanout at Station 827+66, 75' RT.

Baileys Harbor Wastewater may complete this work during construction, requiring 3 working days.

### **Frontier Communications of Wisconsin, LLC – Communication**

Frontier Communications of Wisconsin, LLC has aerial facilities located throughout the project and buried facilities at the northeast quadrant of the STH 57 - Ridges Road intersection.

No conflicts or relocations are anticipated.

### **Wisconsin Public Service Corporation – Electricity**

Wisconsin Public Service Corporation has aerial facilities located throughout the project.

No conflicts or relocations are anticipated.

### **Unknown Utility**

There is an underground utility, shown as a discontinued line, located from Station 811+55, 24' RT to Station 813+15, 23' RT and then crosses northwest under STH 57 ending at Station 813+32, 35' LT. There were significant efforts made to determine ownership, but a definitive owner was not identified. It is possible that this facility will be located again at the time of construction. No conflicts anticipated.

## **SITE 6**

**AT&T Wisconsin (Communication line)** has underground facilities at the STH 54 roundabout and along Overland Road heading east on STH 172. No conflicts are anticipated.

**Net Lec LLC (Communication line)** has underground fiber optic line and an underground copper line along the south side of STH 172. The existing fiber optic line will be discontinued in place and relocated along the south right of way line. This may be during construction, requiring 45 working days to complete. The existing copper line will remain in place and is not anticipated to be in conflict.

**Oneida Tribe of Indians Utility Department (Communication line)** has underground facilities along the south side of STH 172 throughout the project limits. The existing fiber optic line will be discontinued in place and relocated along the south right of way line. This relocation may occur during construction, requiring 4 working days to complete.

**Oneida Tribe of Indians Utility Department (Sanitary Sewer)** has underground facilities along the north and south side of STH 172 and a lateral crossing on the east side of the culvert. Oneida sanitary proposes to relocate the 6" siphon pipes below the proposed culvert, which may be during construction and discontinue the 2 existing 6" siphon sewer pipes located on the south side of STH 172 underneath the existing culvert. Oneida plans to discontinue the 2 existing 8" sewer pipes located on the north side of STH 172 above the existing culvert, as well as the existing manhole and sanitary lateral, which may be during construction, requiring 25 working days to complete.

**Oneida Tribe of Indians Utility Department (Water)** has underground facilities along the north and south side of STH 172 throughout the project limits. Oneida water proposes to relocate the watermain under the proposed box culvert and discontinue the existing watermain. This work may occur during construction, requiring 25 working days to complete.

**Spectrum (Communication line)** has underground fiber optic and coax facilities along the south side of STH 172 throughout the project limits. Spectrum proposed to relocate an existing 2" duct containing a fiber optic line and a coax line, which may be during construction, and the existing duct will be discontinued in place. The second existing coax line will remain in place and is not anticipated to be in conflict.

**Wisconsin Public Service Corporation (Electricity)** has overhead facilities along the north side of STH 172 throughout the project limits. No conflicts are anticipated.

**Wisconsin Public Service Corporation (Gas/Petroleum)** has underground facilities along the north side of STH 172 throughout the project limits. No conflicts are anticipated.

## **SITE 7**

The following utility owners have facilities within the project area; however, facilities are not known to exist in the tree clearing areas:

- **ANR Pipeline Co. (Gas/Petroleum)**
- **ATC Management, Inc (Electricity-transmission)**
- **Guardian Pipeline (Gas/Petroleum)**
- **Northeast Tel Co LLC (Communication line)**
- **Oneida Tribe of Indians Utility Department (Communication line)**
- **Oneida Tribe of Indians Utility Department (Water)**
- **Seymour Community School (Communication line)**
- **Wisconsin Public Service Corporation (Electricity)**
- **Wisconsin Public Service Corporation (Gas/Petroleum)**

The following utility owners have facilities within the project area with adjustments anticipated:

**Brightspeed (Communication Line)** has existing underground and overhead communication facilities that run along STH 54 and that cross STH 54.

Brightspeed has an existing overhead telephone facilities along the north side of STH 54 from approximately Station 1186EB+30 LT to Station 1195+20 LT. The existing overhead communication line crosses STH 54 at approximately Station 1187EB+55 and 1188EB+85. Brightspeed plans to remove overhead telephone lines along the north side of STH 54 from approximately Station 1187EB+55 LT to 1196EB+75 LT along with the crossings at approximately Station 1188EB+15 and 1188EB+85.

An existing overhead telephone line runs along the east side of Ivory Street from approximately Station 33IN+35 RT to the north. Brightspeed plans to remove the overhead telephone line from power pole at approximately Station 33IN+38 RT to the power pole located at approximately Station 34IN+75 RT.

An existing underground telephone line runs along the north side of STH 54 from Station 1193EB+40 LT and runs to the east. Brightspeed plans to relocate telephone peds at approximately Station 1193EB+40 – 64' LT to Station 1193EB+42 – 77' LT. The existing underground telephone line from approximately 1194WB+00 LT to 1193EB+40 LT will be discontinued in place.

An existing underground telephone line runs under STH 54 from approximately Station 33IN+37 – 19' RT on the east side of Ivory Street to approximately Station 32IN+00 - 26' LT to the west side of Ivory Street and continues to run south on the west side of Ivory Street. Brightspeed plans to relocate this underground telephone line to the east side of Ivory Street from the power pole at approximately STA 34IN+75 RT to the telephone peds at 1193EB+42 – 77' LT below the proposed storm sewer to approximately STA 31IN+25 RT running to the south. The existing underground telephone line from 33IN+37 RT to 32IN+00 LT running south will be discontinued in place.

Brightspeed may begin this work during construction and requires 25 working days to complete.

**City of Seymour (Sanitary Sewer)** has existing underground sanitary sewer facilities within the project limits. Facilities do not exist in the tree clearing areas.

City of Seymour has existing sanitary manholes at approximately Station 1192EB+90 – 12' RT, 1193WB+34 – 46' LT, 1203WB+44 – 39' LT, 10NB+08 – 14' RT, 10NB+79 – 21' RT, 10NB+80 – 19' LT, and 33IN+94 – 23' RT.

The City of Seymour plans to discontinue the sanitary manhole at approximately Station 10NB+08 – 14' RT and reconstruction manholes at approximately Station 1193WB+34 – 46' LT, 10NB+79 – 21' RT, and 10NB+80 – 19' LT to allow for the sanitary castings to be lowered during roadway construction.

**City of Seymour (Water)** has existing underground watermain facilities within the project limits. Facilities do not exist in the tree clearing areas.

The existing watermain runs along the north side of STH 54 from approximately Station 1189WB+28 to 1203WB+36 from 18' to 34' LT with crossings at 1190WB+26, along south side of STH 54 from approximately Station 1190EB+15 to 1192EB+92 from 18' to 26' RT, along the east side of STH 55 from Station 51CA+72 to 11NB+75 from 11' to 27' RT, along the west side of CTH C/Ivory Street from Station 31NB+25 to 32NB+56 from 33' to 36' LT, and along the east side of Ivory Street from Station 33NB+15 to 33NB+74 from 8' to 18' RT.

The City of Seymour plans to relocate the valve and fire hydrant located at Station 1190EB+16 – 26' RT. The relocated hydrant will be at Station 1190EB+26 – 29.5' RT. The relocated valve will be at Station 1190EB+26 – 21.5' RT. The city also plans to lower the existing 8-inch watermain at approximately Station 10NB+14 - 13' RT to be under the proposed storm sewer.

**Net Lec LLC (Communication Line)** has existing underground and overhead communication facilities that run along STH 54 and that cross STH 54.

Net Lec has existing overhead communication facilities along the south side of STH 54 from approximately Station 1189EB+38 RT to Station 1195+15 RT on WE Energies poles. The existing overhead communication line crosses STH 54 at approximately Station 1189EB+38 and runs north on the east side of STH 55.

Net Lec may have WE Energies transfer existing overhead communication facilities onto WE Energies newly installed poles during construction and requires 25 working days to complete.

**Oneida Tribe of Indians Utility Department (Sanitary Sewer)** has existing sanitary sewer running on the north side of STH 54 from approximately Station 1522+85 LT to the east to the project limits with sewer lateral crossings of STH 54 at approximately Station 1522+90 and Station 1525+80. The existing sewer manholes are located at approximately Station 1522+80, 38' LT and 1527+32, 42' LT.

**Spectrum(Communication Line)** has existing underground and overhead communication facilities that run along STH 54 and that cross STH 54.

Spectrum has existing overhead communication facilities along the south side of STH 54 from approximately Station 1186EB+75 RT to Station 1195+15 RT on WE Energies poles. The existing overhead communication line crosses STH 54 at approximately Station 1189EB+38 and runs north on the east side of STH 55. The existing overhead communication line also crosses STH 54 at approximately Station 1193EB+42 and runs north and south on the east side of Ivory Street.

Spectrum plans to relocate overhead communication facilities on WE Energies poles at approximately Station 51CA+19 - 27' RT, 10NB+57 - 26' RT, 11NB+11 - 28' RT, 11NB+63 - 28' RT, 1190EB+96 - 33' RT and 60CB+80 - 37' RT.

Spectrum plans to discontinue overhead communication facilities on WE Energies poles from approximately Station 60CB+80 - 37' RT to 33IN+37 - 20' RT and from 33IN+37 running to the north along the east side of Ivory Street.

These relocations will be completed concurrently with WE Energies pole relocations.

**WE Energies (Electricity)** has existing underground and overhead electric facilities that run along STH 54 and that cross STH 54.

An existing overhead electric facilities run along the south side of STH 54 from approximately Station 1185EB+00 RT to 1195EB+75 RT with lines crossing STH 54 at approximately Stations 1188EB+15, 1188EB+30, 1189EB+30, 1191EB+15, 1193EB+10, and 1195EB+35. An existing underground electric facility runs under STH 54 at approximately Station 1193EB+80.

WE Energies plans to relocate overhead electric facilities to poles at approximately Station 51CA+19 - 27' RT, 10NB+57 - 26' RT, 11NB+11 - 28' RT, 11NB+63 - 28' RT, 1190EB+96 - 33' RT, 11190WB+99 - 41' LT, and 60CB+80 - 37' RT. Also plan to discontinue the underground electric facility crossing STH 54 at approximately Station 1193EB+80 and replace it with a deeper line.

WE Energies may begin this work during construction and requires 25 working days to complete.

**WE Energies (Gas/Petroleum)** has existing underground gas facilities that run along STH 54 and that cross STH 54.

An existing underground gas facility runs along the south side of STH 54 from approximately Station 1186EB+00 to 1196EB+00 with gas facilities crossing STH 54 at approximately Station 1186EB+80, 1188EB+77, 1190EB+47, 1191EB+14, and 1193EB+30. Existing facilities also run along the west side of STH 55 and the east side of Ivory Street.

WE Energies discontinued existing gas facilities on the south side of STH 54 from approximately Station 1186EB+00 to 1196EB+00 in the reconstruction limits. WE Energies may relocate their facilities during construction as follows:

- On the south side of STH 54 from approximately Station 1186EB+00 RT to 1189EB+40 RT.
- On the north side of STH 54 from approximately Station 1186EB+50 LT to 1188EB+80 LT, Station 1189EB+45 LT to 1192EB+75 LT, and 1193EB+50 LT to 1195EB+60 LT.
- Crossing STH 54 at approximately Station 1186EB+5 and 1194EB+40.
- On the west side of STH 55 from approximately Station 10NB+35 LT to 11NB+75 LT.
- On the east side of STH 55 from approximately Station 10NB+10 RT to 10NB+30 RT.



- Crossing STH 55 at approximately Station 10NB+30.
- On the west side of Ivory Street from approximately Station 33IN+50 LT to 33IN+53 LT.
- On the east side of Ivory Street from approximately Station 31IN+25 RT to 32IN+50 RT and 33IN+30 RT to 33IN+60 RT.
- Crossing Ivory Street at approximately Station 33IN+50.

## **SITE 8**

**AT&T Wisconsin (Communication Line)** has underground facilities that may be within the proposed construction. AT&T will lower fiber 1-ft in conflict with storm sewer at Stations 305+95 RT and 117+25 LT. AT&T will relocate facilities between Station 308+75 – 309+25 RT and 407+50 – 409+25 LT to the right of way. Pedestal and repeater at Station 53+95 RT will be removed and replaced outside of new roundabout at the right of way. At Station 212+90 LT, the crossbox in the sidewalk will be relocated 4-ft south and 5-ft east. At Station 214+75 LT and 309+48 RT/LT, facilities will be relocated with pedestal/repeater and crossbox. This relocation may occur during construction, requiring 20 working days to complete.

**Net Lec LLC (Communication Line)** has an underground facilities that are in conflict with the proposed storm sewer at Station 111'NB'+75 RT. Net Lec will place a riser down pole at Station 208'SB'+20 LT, place a hand hole at bottom of pole, and install new lines across STH 76 to the east road right-of-way and north along the east right-of-way to Station 111'NB'+85RT where a new hand hole will be placed over the existing ducts. The existing facilities that are in conflict will be discontinued in place. The overhead cable between Station 208'SB'+25 and Station 211'SB'+25 will be removed. This work may be done during the construction, requiring 30 working days to complete.

**Spectrum (Communication Line)** has overhead facilities on WE Energies poles and buried facilities within the project limits. Spectrum will install the following new buried facilities:

- Beginning at a riser on a WE Energies pole on the west leg of School Road at Station 302'EB'+90 Rt going east along the south side of School Road behind the existing trail to Station 212'SB'+78, 169' LT; Going east crossing STH 76 to Station 112'NB'+50, 112' RT; Going north crossing School Road to the new WE Energies pole at Station 116'NB'+11, 46' RT.
- Beginning at the new WE Energies pole at Station 212'SB'+57, 131' LT going east crossing STH 76 to Station 112'NB'+04, 121' RT; Going north to the new WE Energies pole at Station 311'EB'+49, 46' RT.
- Beginning at a riser on the new WE Energies pole on the west side of STH 76 at Station 209'SB'+67, 79' RT going north to a new pedestal at Station 210'SB'+50, 65' LT to intercept an existing service line.

Spectrum will install new overhead facilities on WE Energies poles on the west side of STH 76 at the following locations:

- Station 208'SB'+19, 74' LT; 209'SB'+67, 79' LT; 211'SB'+16, 104' LT; and 212'SB'+57, 131' LT.

Spectrum will install new overhead facilities on WE Energies poles on the east side of STH 76 at the following locations:

- Station 311'EB'+49, 46' RT; 115'NB'+01, 68' RT; 116'NB'+11, 46' RT; and 117'NB'+18, 75' RT.

Spectrum will discontinue in place buried facilities on the south side of School Road between Station 302'EB'+90 RT and STH 76. This relocation work may occur during construction, requiring 30 working days to complete.

**WE Energies (Electricity)** has overhead and buried facilities within the project limits. WE Energies will complete the following removals:

- Remove poles and existing overhead facilities on the north side of school road from Station 406'WB'+70 LT to STH 76.
- Remove poles and existing overhead facilities on the west side of STH 76 between Station 210'SB'+60 LT and the northwest quadrant of the School Road intersection.
- Remove overhead lines crossing STH 76 between the northwest quadrant of the School Road intersection and the existing pole at Station 117'NB'+40 RT.
- Remove poles in on the east side of STH 76 in the southeast and northeast quadrants of the School Road intersection.

WE Energies will place new poles and overhead facilities on the west side of STH 76 at the following locations:

- Station 208'SB'+19, 74' LT; 209'SB'+67, 79' LT; 211'SB'+16, 104' LT; and 212'SB'+57, 131' LT.

WE Energies will place new poles and overhead facilities on the east side of STH 76 at the following locations:

- Station 311'EB'+49, 46' RT; 115'NB'+01, 68' RT; 116'NB'+11, 46' RT; and 117'NB'+18, 75' RT.

WE Energies will install the following new buried facilities:

- Beginning on the west leg of School Road intercepting existing buried facilities at Station 405'WB'+90, 36' LT and crossing School Road to Station 305'EB'+90, 39' RT; Going east along the south side of School Road behind the existing trail to Station 212'SB'+78, 169' LT; Going east crossing STH 76 to Station 112'NB'+50, 112' RT; Going north crossing School Road to the new pole at Station 116'NB'+11, 46' RT.
- Beginning at the new pole at Station 212'SB'+57, 131' LT going east crossing STH 76 to Station 112'NB'+04, 121' RT; Going north to the new pole at Station 311'EB'+49, 46' RT.

WE Energies will discontinue in place existing buried facilities on the north side of School Road between Station 405'WB'+90 LT and Station 406'WB'+75 LT.

This relocation work may occur during construction, requiring 35 working days to complete.

**WE Energies (Gas/Petroleum)** has buried facilities within the project limits. WE Energies will install the following new buried facilities:

- Beginning at the west project limits on School Road going east along the north right-of-way of School Road to STH 76; Going along the right of way in the northwest quadrant of the intersection to Station 215'SB'+ 60; Going east across STH 76 to Station a tee at Station 115'NB'+55, 59' RT; Going north from tee approximately 38' off the east right-of-way to a 90 degree elbow at Station 120'NB'+32; going east to tie into the existing main.
- Beginning at the tee at Station 115'NB'+55, 59' RT going south and east approximately 5' inside the right-of-way in the northeast quadrant of the intersection; going east approximately 2' off the north right-of-way of School Road to tie into the existing main at Station 314'EB'+60, LT. behind the existing trail to Station 212'SB'+78, 169' LT; Going east crossing STH 76 to Station 112'NB'+50, 112' RT; Going north crossing School Road to the new WE Energies pole at Station 116'NB'+11, 46' RT.
- Beginning at the new WE Energies pole at Station 212'SB'+57, 131' LT going east crossing STH76 to Station 112'NB'+04, 121' RT; Going north to the new WE Energies pole at Station 311'EB'+49, 46' RT.
- New service lines across STH 76 at Stations 120'NB'+52 and 120'NB'+87.

WE Energies will discontinue in place the following buried facilities:

- The existing 4" PE main on the north side of School Road from the west project limits, crossing STH 76, to Station 314'EB'+ 60 LT.
- The existing service line crossing STH 76 at Station 120'NB'+75.

This relocation work may occur during construction, requiring 20 working days to complete.

The following owners have facilities within the project area and the owner has indicated that adjustments will be made during roadway construction:

**Greenville Sanitary District No. 1 (Sanitary Sewer)** has buried sewer facilities within the project limits. Facilities do not exist in the tree clearing areas.

**Greenville Sanitary District No. 1 (Water)** has buried water facilities within the project limits. Facilities do not exist in the tree clearing areas.

## **SITE 9**

The following utility owners have facilities within the project limits; however, facilities are not impacted by the tree clearing:

- **Kaukauna Utilities (Electricity)**
- **Level 3 Communications LLC (Communication Line)**
- **PaeTec Communications, LLC (Electricity)**

## **SITE 10**

**Alliant Energy** has underground **electric** facilities within the project limits. Alliant will tie into existing wire at Station 113+00 and install new wire at a minimum of 9-ft deep between Stations 113+50 and 115+50. Alliant will tie back into existing wire at Station 116+00. New wire will be installed in conduit. Existing wire will be discontinued in place. This work may be done during construction, requiring 20 working days to complete.

**AT&T Wisconsin** has underground **communication** facilities within the project limits. AT&T will replace copper cable between Station 112+50 and 116+20 LT at a minimum elevation of 805.00 at the temporary channel and proposed structure. Minimum 3-ft depth will be maintained in remaining areas. An offset of 5-ft south of the north right of way will be maintained as well. Existing cable will be discontinued in place. This work may be done during construction, requiring 20 working days to complete.

**Spectrum** has underground **communication** facilities within the project limits. Spectrum will place two vaults on either side of Sawyer Creek with 200-ft of clack and bore new fiber 10-ft deep between vaults as close to the back of right of way as possible. Existing conduit will be discontinued in place. This work may be done during construction, requiring 5 days to complete.

**United Cooperative** has underground **gas** facilities within the project limits. No anticipated conflicts with the tree clearing areas.

**Wisconsin Public Service (WPS)** has overhead **electric** facilities within the project limits. No anticipated conflicts with the tree clearing areas.

**Wisconsin Public Service (WPS)** has underground **gas** facilities within the project limits. Arrange for a site watch to be present during the culvert construction at approximately Station 114+27. No anticipated conflicts with the tree clearing areas.

## **SITE 11**

The following utility owners have facilities within the project limits; however, facilities are not impacted by the tree clearing:

- **Brightspeed of Central Wisconsin, LLC (Communication Line)**
- **Level 3 Communications LLC (Communication Line)**
- **Wisconsin Public Service Corporation (Electricity)**

8. Deleted

13. Deleted

22. Construction Over or Adjacent to Navigable Waters.

*Remove Site 1 information from article.*

24. Deleted

27. Deleted

30. Work By Others – Site 5.

### **Bertram Wireless - Communication**

Bertram Wireless is permitted to perform utility work within the limits of the project.

Bertram Wireless plans on installing underground facilities along the east side of STH 57 from Station 804+30 to Station 773+00 RT and from Station 767+80 RT to beyond the south project limits and then along the west side of STH 57 from Station 804+80 LT to Station 791+90 LT and from Station 772+10 LT to Station 767+80 LT. There will be crossings of STH 57 at Stations 791+90, 772+10 & 767+80 and also a junction running from the north side of CTH F, from beyond the project limits to the west side of STH 57. The underground facilities at Station 771+54 LT will be installed 2' off the existing right-of-way.

The work is expected to be completed in summer 2023.

For more information, contact:

Utility Contact

Sarah Lawrenz  
Bertram Wireless  
(920) 447-9267

[sarah.lawrenz@bertramcommunications.com](mailto:sarah.lawrenz@bertramcommunications.com)

Permitting Authority Contact

Debbie Sassen  
WisDOT NE Region  
(920) 492-5988

[neutilitypermits@dot.wi.gov](mailto:neutilitypermits@dot.wi.gov)

### **Frontier Communications of Wisconsin, LLC – Communication**

Frontier Communications of Wisconsin, LLC is permitted to perform utility work within the limits of the project.

Frontier Communications of Wisconsin, LLC plans on installing aerial facilities on existing power poles starting at Station 783+20 RT to Station 815+50 RT and then crossing STH 57 at an angle to Station 816+50 LT. Then continuing along the west side of the road to Station 824+20 LT and crossing STH 57 at an angle to Station 824+50 RT. Then continuing along the east side of STH 57 extending beyond the north project limits. The aerial facilities will also start beyond the west project limits along the south side of Howard Avenue extending to the east of side of STH 57.

The underground facilities consist of:

- Proposed handhole at Station 797+60 RT;
- Proposed buried fiber from Station 835+80, 60' RT to Station 837+10, 135' RT.

Frontier Communications of Wisconsin, LLC may complete this work during construction.

For more information, contact:

Utility Contact

Russ Ryan  
Frontier Communications of Wisconsin, LLC  
(920) 737-9662

[russell.w.ryan@ftr.com](mailto:russell.w.ryan@ftr.com)

Permitting Authority Contact

Debbie Sassen  
WisDOT NE Region  
(920) 492-5988

[neutilitypermits@dot.wi.gov](mailto:neutilitypermits@dot.wi.gov)

### **Nsight Teleservices – Communication**

Nsight Teleservices is permitted to perform utility work within the limits of the project.

Nsight plans on installing aerial facilities consisting of 192 SMF 6M strand fiber on existing power poles along the east side of STH 57 from Station 820+04 RT to Station 766+20 RT with junctions running along the following:

- South side of CTH F, from beyond the project limits to the east side of STH 57;
- North side of Bluff Road, from beyond the project limits to the east side of STH 57;

- West side of Frogtown Road, from STH 57 to beyond the project limits.

The work may be completed during construction.

For more information, contact:

Utility Contact

Skeeter Mroczynski

Nsight Teleservices

(920) 637-7384

[skeeter.mroczynski@nsight.com](mailto:skeeter.mroczynski@nsight.com)

Permitting Authority Contact

Debbie Sassen

WisDOT NE Region

(920) 492-5988

[neutilitypermits@dot.wi.gov](mailto:neutilitypermits@dot.wi.gov)

**Schedule of Items**

Attached, dated August 21, 2023, are the revised Schedule of Items Page 1.

**Plan Sheets**

The following 8½ x 11-inch sheets are attached and made part of the plans for this proposal:

Revised: 1, 14, 15, 29, 42, and 43.

END OF ADDENDUM

STATE PROJECT	FEDERAL PROJECT
1009-37-01	

# STATE OF WISCONSIN DEPARTMENT OF TRANSPORTATION

PLAN OF PROPOSED IMPROVEMENT

## STATE WIDE TREE CLEARING

VARIOUS COUNTIES (NER & NCR)

NON HWY

STATEWIDE

STATE PROJECT NUMBER  
**1009-37-01**

Addendum No. 01  
ID 1009-37-01  
Revised Sheet 1  
August 21, 2023

STATE OF WISCONSIN  
DEPARTMENT OF TRANSPORTATION

PREPARED BY: \_\_\_\_\_ WISDOT  
 Designer: E. DANNE  
 Project Manager: S. LABEL  
 Regional Examiner: \_\_\_\_\_  
 Regional Supervisor: E. GOWDT

APPROVED FOR THE DEPARTMENT  
 DATE: **7/19/2023**  
 (Signature)

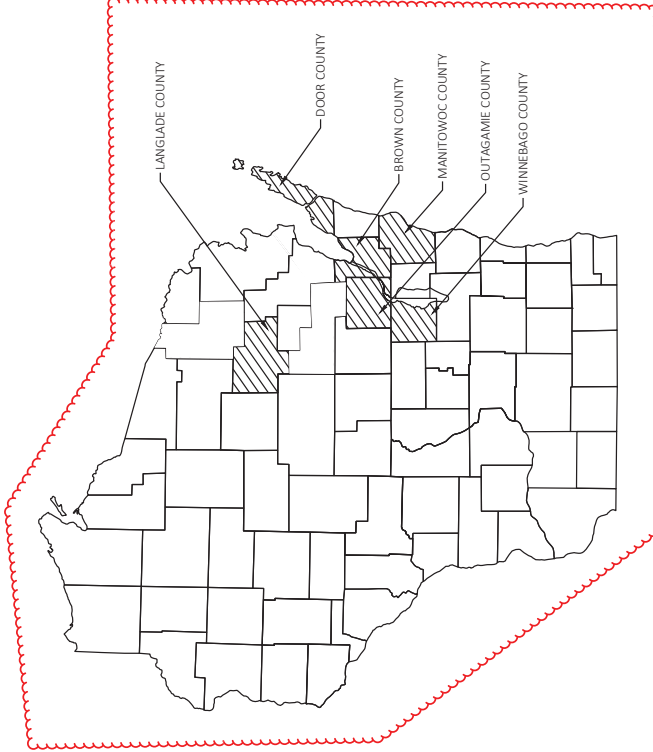
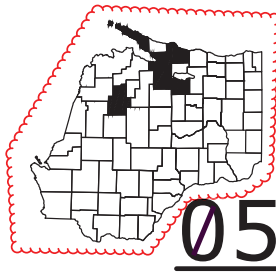
E

SEPTEMBER 2023

ORDER OF SHEETS

Section No.	Title
1	Typical Sections and Details
2	Estimate of Quantities
3	Miscellaneous Quantities
4	Right-of-Way-Plan
5	Plan and Profile
6	Standard Detail Drawings
7	Sign-Tables
8	Construction-Plans
9	Computer-Estimate-Tables
10	Change-Sections

TOTAL SHEETS = 80



DESIGN DESIGNATION

- AA.A.D.T.
- AA.D.T.
- D.A.V.
- D.V.
- T
- DESIGN SPEED
- ESALS

CONVENTIONAL SYMBOLS

PLAN	CORPORATE LIMITS	PROPERTY LINE	LOT LINE	LIMITED HIGHWAY EASEMENT	EXISTING RIGHT OF WAY	PROPOSED OR NEW R/W LINE	SLOPE INTERCEPT	REFERENCE LINE	EXISTING CULVERT	PROPOSED CULVERT (80% or 100%)	COMBUSTIBLE FLUIDS	MARSH AREA	WOODED OR SHRUB AREA				
PROFILE	GRADE LINE	ORIGINAL GROUND	MARSH OR ROCK PROFILE (To be noted as such)	SPECIAL DITCH	GRADE ELEVATION	CULVERT (Profile View)	UTILITIES	ELECTRIC	FIBER OPTIC	GAS	SANITARY SEWER	STORM SEWER	TELEPHONE	WATER	UTILITY PEDESTAL	POWER POLE	TELEPHONE POLE

SCALE	LAYOUT
0	

TOTAL NET LENGTH OF CENTERLINE =

HORIZONTAL POSITIONS SHOWN ON THIS PLAN ARE WISCONSIN COORDINATE REFERENCE SYSTEM (WISCRS), COUNTY, NAD83 (2011), IN U.S. SURVEY FEET. POSITIONS SHOWN ARE GRID, UNADJUSTED POSITIONS. DISTANCES AND ANGLES REFERENCED ARE THE SAME AS GROUND DISTANCES. ELEVATIONS ARE REFERENCED TO NAVD 88 (2012), GPS DERIVED ELEVATIONS ARE BASED ON GEOID 12A.

FILE NAME: \\NPS\3\100937003\SHEETS\01\0001\11.DWG

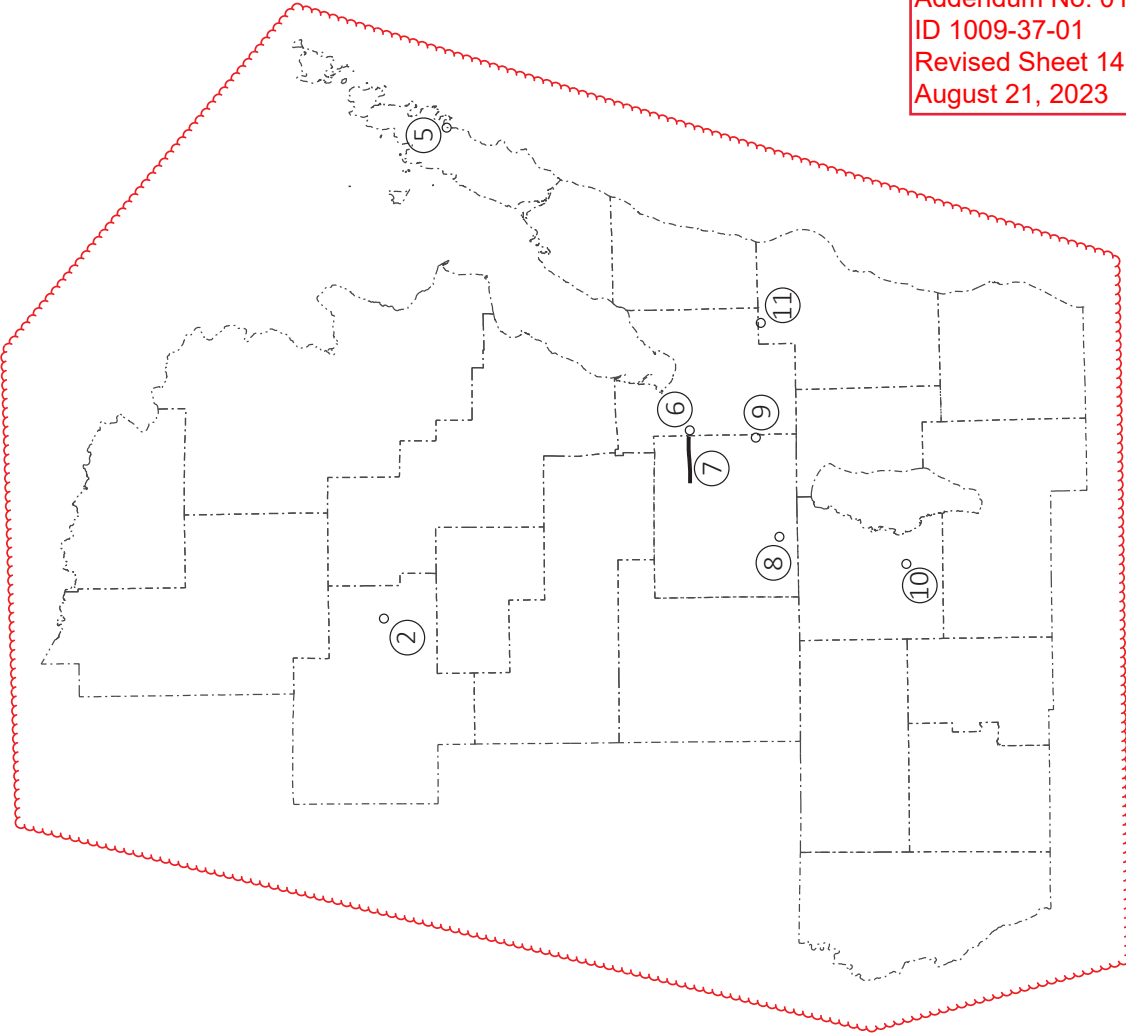
PLOT DATE: 6/14/2023 11:06 AM

PLOT BY: DANA SHARON T

GRE

PROJECT ID: 1009-37-01  
WITH: N/A

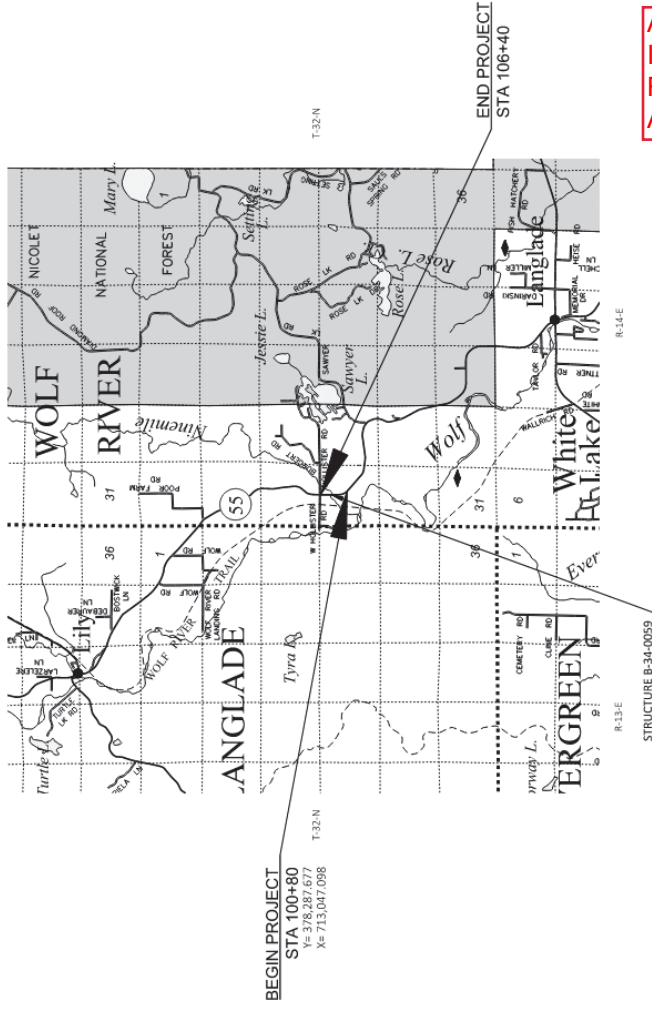
COUNTY: NE & NC REGION-WIDE



Addendum No. 01  
 ID 1009-37-01  
 Revised Sheet 14  
 August 21, 2023

SITE	SOURCE WISDOT PROJECT ID	COUNTY	HIGHWAY
2	9155-05-71	LANGLADE	STH 55
5	4150-14-71	DOOR	STH 57
6	1210-18-71	BROWN	STH 172
7	6230-20-71	OUTAGAMIE	STH 54
8	6430-20-71	OUTAGAMIE	STH 76
9	1130-44-71	OUTAGAMIE	IH 41
10	6540-11-71	WINNEBAGO	STH 91
11	1225-10-72	MANITOWOC	IH 43

SITE 2  
LANGLADE COUNTY  
STH 55

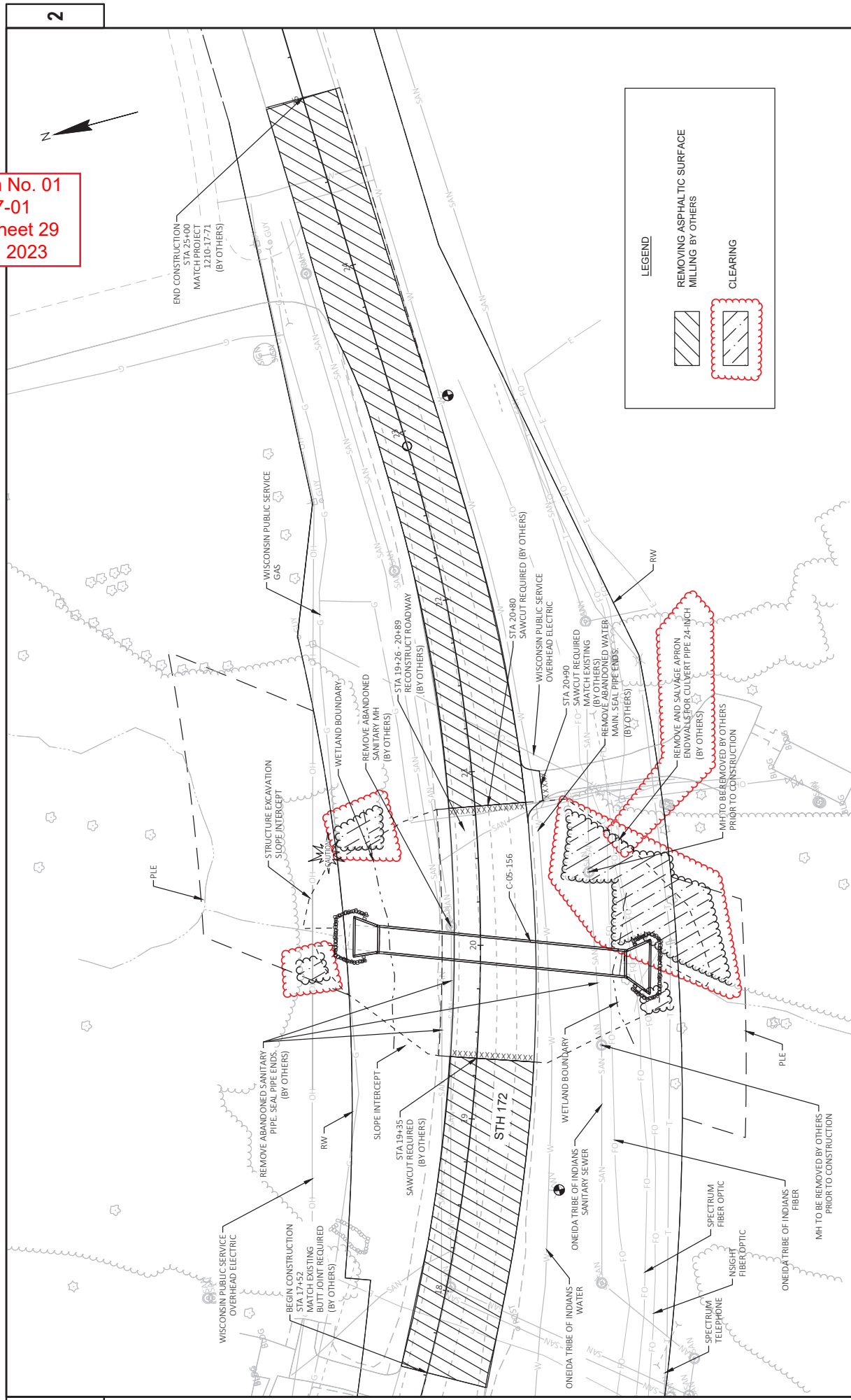


Addendum No. 01  
 ID 1009-37-01  
 Revised Sheet 15  
 August 21, 2023

PROJECT NO: 1009-37-01	COUNTY: REGION WIDE	SHEET 15	E
FILE NAME: N:\PDS\33D\10093700\DSG\WEDGE\IN\10093701_PROJECTOVERVIEW.DWG	HWY: VARIES	PROJECT OVERVIEWS	1 INS.DDT
LAYOUT NAME: 10093701-01-Project_Overview_2	PLOT DATE: 7/19/2023 2:21 PM	PLOT NAME: DAME.ERCA	WIS007\CADD\SS SHEET 42



Addendum No. 01  
 ID 1009-37-01  
 Revised Sheet 29  
 August 21, 2023



2

2

PROJECT NO: 1009-37-01	HWY: STH 172	COUNTY: BROWN	REMOVAL PLAN -- SITE 6	SHEET 2 PRE 9 E
FILE NAME: C:\2023\1021089 - WISDOT STH 172\CM\130\13108\SHETS\PLAN02\10-RM.DWG	LAYOUT NAME: -01101-01	PLOT DATE: 7/20/2023 1:52 PM	PLOT BY: KEVIN JORDAN	PLOT SCALE: 1 IN=50 FT
WISDOT/CADD/SHEET 42				



Addendum No. 01  
ID 1009-37-01  
Revised Sheet 43  
August 21, 2023

EROSION CONTROL AND TRAFFIC CONTROL

SITE	SPV/0060.01	SPV/0060.02	SPV/0060.04	SPV/0060.05
	SEMI-PERMANENT RESTORATION EACH	SINGLE LANE CLOSURE NON-FREEMWAY/EXPRESSWAY EACH	WORK ON SHOULDER OR PARKING LANE UNDIVIDED ROADWAY EACH	SINGLE LANE CLOSURE WITH BI-DIRECTIONAL TRAFFIC EACH
2	1	-	-	1
5	1	-	-	1
6	1	-	1	-
7	1	1	1	-
8	1	-	-	1
9	1	-	1	-
10	1	-	1	-
11	1	-	2	-
TOTAL	8	1	6	3



Proposal Schedule of Items

Proposal ID: 20230912005 Project(s): 1009-37-01

Federal ID(s): N/A

SECTION: 0001 Contract Items

Alt Set ID: Alt Mbr ID:

Proposal Line Number	Item ID Description	Approximate Quantity and Units	Unit Price	Bid Amount
0002	201.0105 Clearing	32.000 STA	_____.	_____.
0004	201.0115 Clearing	18.000 ACRE	_____.	_____.
0006	201.0120 Clearing	48.000 ID	_____.	_____.
0008	213.0100 Finishing Roadway (project) 01. 1009-37.01	1.000 EACH	_____.	_____.
0010	618.0100 Maintenance And Repair of Haul Roads (project) 01. 1009-37-01	1.000 EACH	_____.	_____.
0012	619.1000 Mobilization	1.000 EACH	_____.	_____.
0014	SPV.0060 Special 01. Semi-Permanent Restoration	8.000 EACH	_____.	_____.
0016	SPV.0060 Special 02. Single Lane Closure, Non-Freeway/Expressway	1.000 EACH	_____.	_____.
0020	SPV.0060 Special 04. Work on Shoulder or Parking Lane Undivided Roadway	6.000 EACH	_____.	_____.
0022	SPV.0060 Special 05. Single Lane Closure With Bi-Directional Traffic	3.000 EACH	_____.	_____.
<b>Section: 0001</b>			<b>Total:</b>	_____.
			<b>Total Bid:</b>	_____.