



# Wisconsin Department of Transportation

## Division of Transportation Systems Development

Bureau of Project Development  
4822 Madison Yards Way, 4<sup>th</sup> Floor South  
Madison, WI 53705

September 1, 2023

Telephone: (608) 266-1631  
Facsimile (FAX): (608) 266-8459

### NOTICE TO ALL CONTRACTORS:

**Proposal #07: 1430-02-73, WISC 2023615**  
**Endeavor - Princeton**  
**8<sup>th</sup> Court to Morningside Court**  
**STH 023**  
**Marquette County**

### Letting of September 12, 2023

This is Addendum No. 01, which provides for the following:

#### Special Provisions:

Revised Special Provisions	
Article No.	Description
18	Cold In-Place Recycling (CIR) Asphalt Base Layer, Item 327.1000.S; Asphalt Stabilizing Agent, Item 455.0770.S

#### Schedule of Items:

Revised Bid Item Quantities					
Bid Item	Item Description	Unit	Proposal Total Prior to Addendum	Proposal Quantity Change (-)	Proposal Total After Addendum
204.0110	Removing Asphaltic Surface	SY	522	52	574
205.0100	Excavation Common	CY	4,071	66	4,137
305.0120	Base Aggregate Dense 1 ¼-Inch	TON	1,941	73	2,014
465.0105	Asphaltic Surface	TON	545	14	559
690.0150	Sawing Asphalt	LF	750	251	1,001
SPV.0090.01	Temporary Marking Line Paint 6-Inch	LF	148,479	-2,472	146,007
SPV.0090.02	Temporary Marking Line Epoxy 6-Inch	LF	44,831	-618	44,213
SPV.0090.03	Marking Line Epoxy 6-Inch	LF	45,259	-618	44,641

Deleted Bid Item Quantities					
Bid Item	Item Description	Unit	Proposal Total Prior to Addendum	Proposal Quantity Change (-)	Proposal Total After Addendum
643.4100	Traffic Control Interim Lane Closure	Each	4	-4	0

**Plan Sheets:**

Revised Plan Sheets	
Plan Sheet	Plan Sheet Title (brief description of changes to sheet)
19	Intersection Detail – added sawcut locations
71	MQ – added notes and added quantities
72	MQ – added notes
73	MQ – added notes
74	MQ – added notes
77	MQ - remove item 643.4100 Traffic Control Interim Lane Closure
78	MQ - add remarks column and revise pavement marking quantities
79	MQ - add remarks column and revise pavement marking quantities
99	Plan & Profile - revised pavement core data notes
100	Plan & Profile - revised pavement core data notes

The responsibility for notifying potential subcontractors and suppliers of these changes remains with the prime contractor.

Sincerely,

*Mike Coleman*

Proposal Development Specialist  
Proposal Management Section

**ADDENDUM NO. 01**

**1430-02-73**

**September 1, 2023**

**Special Provisions**

**18. Cold In-Place Recycling (CIR) Asphalt Base Layer, Item 327.1000.S; Asphalt Stabilizing Agent, Item 455.0770.S**

*Replace section titled C.7.3 Surfacing with the following:*

**C.7.3 Surfacing**

- (1) Surfacing materials, equipment, and construction methods shall be according to the applicable sections of the standard specs or contract special provisions.
- (2) Paving of final surfacing (for single layer) or leveling/lower layer of HMA on the cured CIR sections shall not be conducted until the moisture content in the CIR layer reduces to 2.50% or less.
- (3) The final surfacing (for single layer) or leveling/lower layer shall be placed on the CIR layer within 10 calendar days once a section of the CIR layer is considered cured per section B.4.5.
- (4) After any rain event, the excess moisture in the CIR layer shall be allowed to dry before paving the final surfacing (for single layer) or leveling/lower HMA layer. The contractor and engineer should inspect the CIR layer to determine suitability for surfacing.

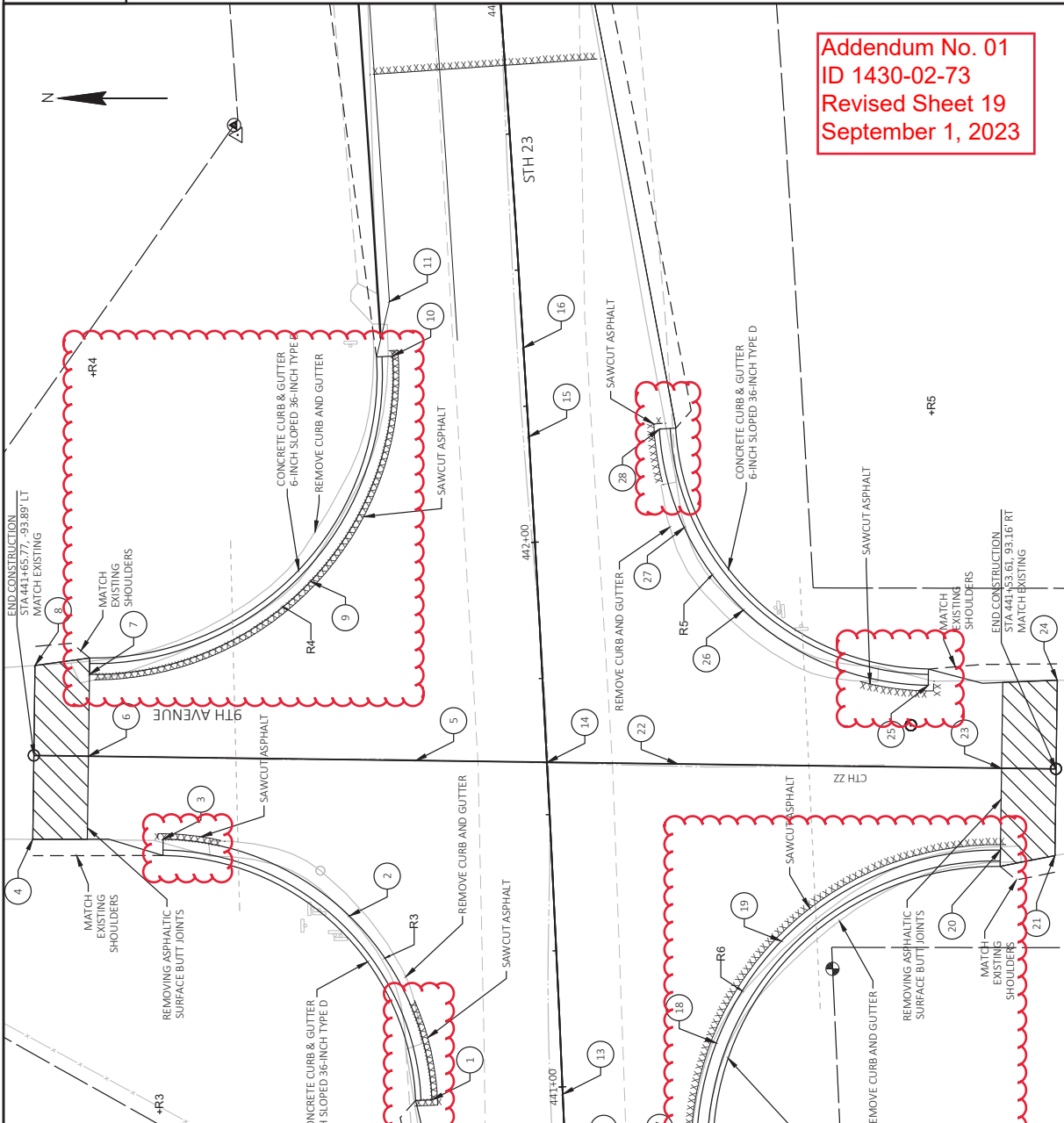
**Schedule of Items**

Attached, dated September 1, 2023, are the revised Schedule of Items Pages 1 – 6.

**Plan Sheets**

The following 8½ x 11-inch sheets are attached and made part of the plans for this proposal:  
Revised: 19, 71, 72, 73, 74, 77, 78, 79, 99, and 100.

END OF ADDENDUM



Addendum No. 01  
ID 1430-02-73  
Revised Sheet 19  
September 1, 2023

RADIUS #	STATION	OFFSET	RADIUS	COORDINATES	ELEVATION
R3	440+98.69	74.00 LT	50	X= 441184.4978 Y= 253670.3433	793.24
	442+35.68	79.15 RT	55	X= 441319.6695 Y= 253682.4840	793.26
R5	442+19.35	74.00 RT	50	X= 441300.5123 Y= 253545.0909	791.89
	440+85.10	79.00 RT	55	X= 441177.4754 Y= 253516.9014	793.90

POINT	STATION	OFFSET	Y COORDS	X COORDS	ELEV
1	440+98.69	74.00 LT	253670.3912	441186.6852	796.76
2	441+33.19	37.58 LT	253635.5327	441220.3896	795.98
3	441+49.07	70.99 LT	253669.6845	441234.4935	795.20
4	441+50.24	94.89 LT	253693.6080	441234.4388	MATCH
5	441+61.15	24.00 LT	253623.3697	441248.8844	795.99
6	441+65.10	83.91 LT	253683.4064	441249.6756	795.36
7	441+80.23	82.92 LT	253683.2087	441264.6743	795.06
8	441+82.44	92.79 LT	253693.1879	441266.3165	MATCH
9	441+95.14	41.48 LT	253642.6612	441281.7334	795.20
10	442+35.68	24.00 LT	253627.5887	441323.0605	795.33
11	442+45.70	24.00 LT	253628.2108	441333.0254	MATCH
12	440+85.10	0.00	253595.8318	441174.1597	797.48
13	440+98.69	0.00	253596.4142	441187.7351	797.26
14	441+59.59	0.00	253599.3210	441248.5675	796.51
15	442+19.35	0.00	253660.2649	441308.2399	795.95
16	442+35.68	0.00	253603.6343	441324.5403	795.84
17	440+85.10	24.00 RT	253571.8529	441175.1670	797.99
18	441+06.76	28.51 RT	253567.2879	441197.0822	797.50
19	441+24.88	41.30 RT	253556.3484	441215.8021	796.86
20	441+39.43	82.23 RT	253516.1767	441232.4706	795.59
21	441+37.95	92.15 RT	253506.1891	441231.4630	MATCH
22	441+58.03	24.00 RT	253575.2726	441248.2506	797.03
23	441+54.24	83.18 RT	253515.9791	441247.4693	795.89
24	441+69.94	70.52 RT	253505.7654	441263.6174	MATCH
25	441+69.94	70.52 RT	253529.4348	441262.6479	795.85
26	441+85.47	37.46 RT	253563.3020	441276.4779	796.31
27	442+01.13	27.49 RT	253574.1390	441291.6151	796.53
28	442+19.35	24.00 RT	253578.6874	441309.6675	796.46

Addendum No. 01  
ID 1430-02-73  
Revised Sheet 73  
September 1, 2023

DIVISION	FROM/TO STATION	LOCATION	* 205.0100 COMMON EXCAVATION	SALVAGED/UNUSABLE PAVEMENT MATERIAL (4)	AVAILABLE MATERIAL (5)	UNEXPANDED FILL	EXPANDED FILL (6)		MASS ORDINATE +/- (7)	WASTE	COMMENT
							X1.25	X1.25			
DIVISION 1											
STH 23	410+11-411+17	STH 23	1,020	60	960	9	11	949	949	949	
STH 23	442+88-443+93	STH 23	871	60	811	5	6	805	805	805	
STH 23	517+60-518+65	STH 23	733	58	675	13	16	659	659	659	
STH 23	609+00-626+75	STH 23	1,187	72	1,115	315	394	721	721	721	
FERN AVENUE	60+17-61+17	FERN AVENUE	260	59	201	13	16	185	185	185	
DIVISION 1 SUBTOTAL			4,071	309	3,762	355	444	3,318	3,318		
GRAND TOTAL		TOTAL COMMON EXC	4,071	309	3,762	355	444	3,318	3,318	3,318	

\* ADDITIONAL QUANTITIES FOUND ELSEWHERE IN PLANS

- NOTES:
- (1) COMMON EXCAVATION IS THE SUM OF THE CUT AND EBS EXCAVATION COLUMNS. ITEM NUMBER 205.0100
  - (2) SALVAGED/UNUSABLE PAVEMENT MATERIAL IS INCLUDED IN CUT.
  - (3) SALVAGED/UNUSABLE PAVEMENT MATERIAL
  - (4) AVAILABLE MATERIAL = CUT - SALVAGED/UNUSABLE PAVEMENT MATERIAL
  - (5) EXPANDED FILL FACTOR = 1.25
  - (6) DEPENDING ON SELECTIONS:  
OR  
EXPANDED FILL = (UNEXPANDED FILL - EXPANDED ROCK - REDUCED MARSH - REDUCED EBS) \* FILL FACTOR  
OR  
EXPANDED FILL = (UNEXPANDED FILL - EXPANDED ROCK - REDUCED MARSH) \* FILL FACTOR  
OR  
EXPANDED FILL = (UNEXPANDED FILL - EXPANDED ROCK) \* FILL FACTOR
  - (7) THE MASS ORDINATE + OR - QTY CALCULATED FOR THE DIVISION. PLUS QUANTITY INDICATES AN EXCESS OF MATERIAL WITHIN THE DIVISION. MINUS INDICATES A SHORTAGE OF MATERIAL WITHIN THE DIVISION.
  - (8) FACTORS USED TO COMPUTE ANTICIPATED WASTE AND THE COMPUTED WASTE VOLUME IDENTIFIED ARE FOR GENERAL INFORMATION ONLY.

CATEGORY	STATION	LT/RT	TO	STATION	LT/RT	LOCATION	REMOVING ASPHALTIC SURFACE		EXCAVATION COMMON	AGGREGATE DENSE 1 1/4- INCH	ASPHALTIC SURFACE	SAWING ASPHALT
							SY	LF				
* 205.0100 COMMON EXCAVATION												
* ADDITIONAL QUANTITIES FOUND ELSEWHERE IN PLANS												
0010	440+81	RT	-	441+40	RT	CTHZZ & STH 23	11	94	18	20	3	88
0010	441+08	LT	-	441+48	LT	9TH AVE & STH 23	9	57	15	17	4	40
0010	441+71	RT	-	442+09	RT	CTHZZ & STH 23	6	56	15	16	4	29
0010	441+79	LT	-	442+42	LT	9TH AVE & STH 23	26	95	18	20	3	94
TOTAL 0010							52	302	66	73	14	251

REMOVING DRAINAGE

CATEGORY	STATION	LOCATION	REMARKS	EACH
203.0100				
REMOVING SMALL PIPE CULVERTS				
0010	410+64.29	STH 23	36-INCH X 66LF CPIS	1
0010	443+40.37	STH 23	30-INCH X 67LF CPIS	1
0010	518+12.97	STH 23	24-INCH X 66LF CPIS	1
0010	617+28.45	STH 23	30-INCH X 62LF CPIS	1
0010	60+29.56	FERN AVENUE	18-INCH X 47LF CPIS	1
TOTAL 0010				5

Addendum No. 01  
ID 1430-02-73  
Revised Sheet 74  
September 1, 2023

204.0110  
\*

HMA REMOVAL & PREPARATION

CATEGORY	STATION	TO	STATION	LOCATION	REMOVING ASPHALTIC SURFACE SY	REMOVING ASPHALTIC SURFACE BUTT JOINTS SY	204.0115	204.0120	211.0400	211.0700 S.01. PREPARE FOUNDATION FOR CIR BASE LAYER (PROJECT) (01. 1430-02-73)	211.0800 S	305.0504 S	327.1000 S	211.0101.01	REMARKS
0010	-	-	-	PROJECT	-	-	-	-	-	1	-	-	-	1	PREPARE FOUNDATION FOR ASPHALTIC PAVING (PROJECT) (01. 1430-02-73)
0010	356+13.97	-	402+00.00	5TH 23	-	-	-	17,305	-	-	-	370	-	-	-
0010	356+13.97	-	356+23.97	5TH 23	38	-	-	-	-	-	-	-	-	-	-
0010	366+86.39	-	366+87.08	CTH M	46	-	-	-	-	-	-	-	-	-	-
0010	366+92.40	-	366+93.58	CTH M	46	-	-	-	-	-	-	-	-	-	-
0010	391+78.18	-	391+80.40	8TH DRIVE	32	-	-	-	-	-	-	-	-	-	-
0010	393+60.33	-	393+85.91	CTH M	74	-	-	-	-	-	-	-	-	-	8-39-0072
0010	394+23.36	-	394+48.90	CTH M	74	-	-	-	-	-	-	-	-	-	8-39-0072
0010	402+00.00	-	724+77.84	5TH 23	522	-	-	-	-	-	-	-	-	-	DRIVEWAY BUMP OUTS AND MATCHES
0010	402+00.00	-	723+77.84	5TH 23	-	-	-	109,807	-	7,151	-	-	107,260	-	-
0010	402+00.00	-	724+77.84	5TH 23	-	-	-	-	-	-	-	-	-	-	-
0010	416+94.94	-	416+97.05	8TH DRIVE	29	-	-	-	-	-	-	-	-	-	-
0010	441+53.61	-	441+54.24	CTH ZZ	37	-	-	-	-	-	-	-	-	-	-
0010	441+65.10	-	441+65.77	9TH AVENUE	36	-	-	-	-	-	-	-	-	-	-
0010	495+18.32	-	495+22.35	.10TH AVE	24	-	-	-	-	-	-	-	-	-	-
0010	522+23.17	-	522+23.93	10TH DRIVE	23	-	-	-	-	-	-	-	-	-	-
0010	576+10.56	-	576+12.08	11TH DRIVE	24	-	-	-	-	-	-	-	-	-	-
0010	716+49.71	-	716+51.07	CTH B	36	-	-	-	-	-	-	-	-	-	-
0010	717+77.16	-	717+86.52	CTH B	13	-	-	-	-	-	-	-	-	-	-
0010	718+80.79	-	718+82.07	COTTAGE COURT	27	-	-	-	-	-	-	-	-	-	-
				TOTAL 0010	522	-	559	127,112	0	1	7,151	370	107,260	1	
0020	494+00.00	-	724+77.84	5TH 23	-	-	-	-	462	-	-	-	-	-	-
				TOTAL 0020	-	-	-	-	462	-	-	-	-	-	-
				PROJECT TOTAL	522	559	127,112	462	462	1	7,151	370	107,260	1	
				*ADDITIONAL QUANTITIES FOUND ELSEWHERE IN PLANS											

SUPERELEVATION CORRECTION

CATEGORY	STATION	TO	STATION	LI/RT	LOCATION	REMOVING ASPHALTIC SURFACE MILLING (01. SUPERELEVATION CORRECTION) SY	204.9180 S.01	204.9195.01	REMARKS
0020	609+00.00	-	626+75.00	LT	W/B 5TH 23	2,776	-	-	-
0020	612+50.00	-	623+00.00	RT	E/B 5TH 23	-	74	-	SPV.0060.01 SPECIAL (01. MOWING) EACH
0020	623+00.00	-	626+75.00	RT	E/B 5TH 23	646	-	-	-
				TOTAL 0020		3,422	74		

Addendum No. 01  
ID 1430-02-73  
Revised Sheet 75  
September 1, 2023

BASE AGGREGATES

CATEGORY	STATION	TO	STATION	LOCATION	TON	TON	INCH	TON	WATER	REMARKS
					AGGREGATE DENSE 3/4-INCH	AGGREGATE DENSE 1 1/4-INCH			MGAL	
0010	356+13.97	-	402+00.00	5TH 23	283	-	-	-	4	MILL & OVERLAY - UNPAVED SHOULDERS
0010	402+00.00	-	724+77.84	5TH 23	2273	-	-	-	34	CIR - UNPAVED SHOULDERS
0010	402+00.00	-	724+77.84	5TH 23	166	-	-	-	2	GRAVEL DRIVEWAY MATCHES
0010	410+11.30	-	411+17.31	5TH 23	51	359	-	-	6	BASE COURSE/SHOULDERING
0010	410+11.30	-	411+17.31	5TH 23	469	-	-	-	7	TRANSITION CUT BACKFILL
0010	442+87.62	-	443+93.12	5TH 23	51	490	-	-	8	BASE COURSE/SHOULDERING
0010	442+87.62	-	443+93.12	5TH 23	347	-	-	-	5	TRANSITION CUT BACKFILL
0010	517+60.47	-	518+65.47	5TH 23	51	362	-	-	6	BASE COURSE/SHOULDERING
0010	517+60.47	-	518+65.47	5TH 23	288	-	-	-	4	TRANSITION CUT BACKFILL
0010	616+75.69	-	617+81.20	5TH 23	51	370	-	-	6	BASE COURSE/SHOULDERING
0010	616+75.69	-	617+81.20	5TH 23	389	-	-	-	6	TRANSITION CUT BACKFILL
0010	60+17.00	-	61+17.05	FERN AVENUE	20	360	-	-	6	
TOTAL 0010					4,156	1,941	-	-	90	

\*ADDITIONAL QUANTITIES FOUND ELSEWHERE IN PLANS

HMA

CATEGORY	STATION	TO	STATION	LOCATION	GAL	TON	TON	TON	TON	SY	REMARKS
					TACK COAT	HMA PAVEMENT 3 MT 58-28 S	HMA PAVEMENT 4 MT 58-28 S	ASPHALTIC SURFACE TREATMENT	ASPHALTIC SURFACE TREATMENT		
0010	356+13.97	-	401+00	5TH 23	825	-	-	-	-	-	12FT DRIVING LANES
0010	356+13.97	-	401+00	5TH 23	435	-	-	-	-	-	3FT SHOULDERS AND INTERSECTIONS
0010	401+00	-	494+00	5TH 23	3,472	-	-	-	-	-	12FT DRIVING LANES
0010	401+00	-	494+00	5TH 23	-	3,125	-	-	-	-	3FT SHOULDERS AND INTERSECTIONS
0010	402+00	-	723+77.84	5TH 23	-	1,055	-	-	-	-	CIR
0010	494+00	-	724+77.84	5TH 23	-	7,754	-	-	-	-	12FT DRIVING LANES
0010	494+00	-	724+77.84	5TH 23	-	2,115	-	-	-	-	3FT SHOULDERS AND INTERSECTIONS
0010	410+11.30	-	411+17.31	5TH 23	24	-	-	-	126	-	TEMPORARY HMA AT CULVERT REPLACEMENT (3MT)
0010	442+87.62	-	443+93.12	5TH 23	32	-	-	-	167	-	TEMPORARY HMA AT CULVERT REPLACEMENT (3MT)
0010	517+60.47	-	518+65.47	5TH 23	24	-	-	-	126	-	TEMPORARY HMA AT CULVERT REPLACEMENT (3MT)
0010	616+75.69	-	617+81.20	5TH 23	24	-	-	-	126	-	TEMPORARY HMA AT CULVERT REPLACEMENT (3MT)
TOTAL 0010					4,836	505	14,049	14,504	545	0	
0020	494+00	-	724+77.84	5TH 23	716	-	1,289	-	-	-	2FT WIDENING OF SHOULDERS
0020	592+01.90	-	600+29.62	5TH 23	-	-	-	-	-	-	CURVE 9, 12FT DRIVING LANES
0020	612+50.00	-	623+00.00	E/8 5TH 23	123	-	-	-	-	-	TACK FOR SUPERELEVATION WEDGE LAYER
0020	612+94.06	-	621+66.07	5TH 23	-	-	-	-	-	-	CURVE 10, 12FT DRIVING LANES
TOTAL 0020					839	0	1,289	1,146	0	2,207	
PROJECT TOTAL					5,675	505	15,338	15,650	545	4,532	

\*465.0105





Addendum No. 01  
ID 1430-02-73  
Revised Sheet 79  
September 1, 2023

RESTORATION

625.0100 628.2008 629.0210 630.0130 630.0500  
EROSION MAT FERTILIZER TYPE SEEDING  
URBAN CLASS I TYPE B MIXTURE NO. 30 SEED WATER  
TOPSOIL

CATEGORY	STATION	TO	STATION	LOCATION	SY	SY	CWT	LB	MICAL	REMARKS
0010	410+11.30	-	411+17.31	5TH 23	363	0.23	7	4		
0010	440+76.64	-	442+41.96	5TH 23	174	0.11	3	2		
0010	442+87.62	-	443+93.12	5TH 23	303	0.19	5	3		
0010	517+60.47	-	518+65.47	5TH 23	417	0.26	8	5		
0010	608+83.00	-	627+03.00	5TH 23	2,598	1.64	47	29		
0010	60+17.00	-	61+17.05	FERN AVENUE	264	0.17	5	3		
TOTAL 0010					4,119	2.59	75	47		

TRAFFIC CONTROL



CATEGORY	NO. OF SIGNS	NO. OF DRUMS	NO. OF BARRICADES	NO. OF LIGHTS	DAYS	TYPE A	TYPE B	TYPE C	TYPE D	TYPE E	TYPE F	TYPE G	TYPE H	TYPE I	TYPE J	TYPE K	TYPE L	TYPE M	TYPE N	TYPE O	TYPE P	TYPE Q	TYPE R	TYPE S	TYPE T	TYPE U	TYPE V	TYPE W	TYPE X	TYPE Y	TYPE Z	REMARKS
0010	1	-	-	-	7	-	-	-	-	-	-	-	-	-	-	-	-	-	-	-	-	-	-	-	-	-	-	-	-	-	7-DAY ADVANCED WARNING (620-57)	
0010	4	-	-	-	100	-	-	-	-	-	-	-	-	-	-	-	-	-	-	-	-	-	-	-	-	-	-	-	-	-	TRAFFIC CONTROL SIGNS	
0010	1	-	-	-	100	-	-	-	-	-	-	-	-	-	-	-	-	-	-	-	-	-	-	-	-	-	-	-	-	-	TRAFFIC CONTROL SIGNS	
0010	4	-	-	-	100	-	-	-	-	-	-	-	-	-	-	-	-	-	-	-	-	-	-	-	-	-	-	-	-	-	TRAFFIC CONTROL SIGNS	
0010	2	-	-	-	100	-	-	-	-	-	-	-	-	-	-	-	-	-	-	-	-	-	-	-	-	-	-	-	-	-	TRAFFIC CONTROL SIGNS	
0010	2	-	-	-	100	-	-	-	-	-	-	-	-	-	-	-	-	-	-	-	-	-	-	-	-	-	-	-	-	-	TRAFFIC CONTROL SIGNS	
0010	4	20	-	-	100	-	-	-	-	280	-	-	-	-	-	-	-	-	-	-	-	-	-	-	-	-	-	-	-	-	PROTECTION OF C&G WORK WITH DRUMS	
0010	2	-	-	-	100	-	-	-	-	-	-	-	-	-	-	-	-	-	-	-	-	-	-	-	-	-	-	-	-	-	PROTECTION OF C&G WORK WITH DRUMS	
0010	2	-	-	-	100	-	-	-	-	-	-	-	-	-	-	-	-	-	-	-	-	-	-	-	-	-	-	-	-	-	PROTECTION OF C&G WORK WITH DRUMS	
0010	6	-	12	16	3	-	36	48	18	-	-	-	-	-	-	-	-	-	-	-	-	-	-	-	-	-	-	-	-	-	FERN AVENUE CLOSURE	
0010	2	-	-	-	3	-	-	-	6	-	-	-	-	-	-	-	-	-	-	-	-	-	-	-	-	-	-	-	-	-	FERN AVENUE CLOSURE	
0010	2	-	-	-	100	-	-	-	200	-	-	-	-	-	-	-	-	-	-	-	-	-	-	-	-	-	-	-	-	-	-	FERN AVENUE CLOSURE
0010	2	-	-	-	100	-	-	-	200	-	-	-	-	-	-	-	-	-	-	-	-	-	-	-	-	-	-	-	-	-	-	FERN AVENUE CLOSURE
0010	1	-	-	-	100	-	-	-	100	-	-	-	-	-	-	-	-	-	-	-	-	-	-	-	-	-	-	-	-	-	-	7-DAY ADVANCED WARNING (620-57)
0010	1	-	-	-	7	-	-	-	18	-	-	-	-	-	-	-	-	-	-	-	-	-	-	-	-	-	-	-	-	-	-	7-DAY ADVANCED WARNING (620-57)
0010	10	34	-	-	2	-	-	-	68	-	-	-	-	-	-	-	-	-	-	-	-	-	-	-	-	-	-	-	-	-	-	UNEVEN LANE SIGNING
0010	10	34	-	-	2	-	-	-	68	-	-	-	-	-	-	-	-	-	-	-	-	-	-	-	-	-	-	-	-	-	-	UNEVEN LANE SIGNING
0010	10	34	-	-	2	-	-	-	68	-	-	-	-	-	-	-	-	-	-	-	-	-	-	-	-	-	-	-	-	-	-	UNEVEN LANE SIGNING
0010	10	34	-	-	2	-	-	-	68	-	-	-	-	-	-	-	-	-	-	-	-	-	-	-	-	-	-	-	-	-	-	UNEVEN LANE SIGNING
0010	4	-	-	-	100	-	-	-	400	-	-	-	-	-	-	-	-	-	-	-	-	-	-	-	-	-	-	-	-	-	-	GROOVED PAVEMENT SIGNING
0010	14	-	-	-	25	-	-	-	350	-	-	-	-	-	-	-	-	-	-	-	-	-	-	-	-	-	-	-	-	-	-	GROOVED PAVEMENT SIGNING
0010	18	-	-	-	30	-	-	-	540	-	-	-	-	-	-	-	-	-	-	-	-	-	-	-	-	-	-	-	-	-	-	GROOVED PAVEMENT SIGNING
0010	16	-	-	-	30	-	-	-	480	-	-	-	-	-	-	-	-	-	-	-	-	-	-	-	-	-	-	-	-	-	-	GROOVED PAVEMENT SIGNING
0010	10	44	-	-	1	-	-	-	44	-	-	-	-	-	-	-	-	-	-	-	-	-	-	-	-	-	-	-	-	-	-	BUMP/LOOSE GRAVEL SIGNING
0010	10	47	-	-	1	-	-	-	47	-	-	-	-	-	-	-	-	-	-	-	-	-	-	-	-	-	-	-	-	-	-	BUMP/LOOSE GRAVEL SIGNING
0010	10	47	-	-	1	-	-	-	47	-	-	-	-	-	-	-	-	-	-	-	-	-	-	-	-	-	-	-	-	-	-	BUMP/LOOSE GRAVEL SIGNING
0010	10	44	-	-	1	-	-	-	44	-	-	-	-	-	-	-	-	-	-	-	-	-	-	-	-	-	-	-	-	-	-	BUMP/LOOSE GRAVEL SIGNING

TOTAL 0010

4,119 2,59 75 47 36 48 3,424 36

PAVEMENT MARKING (SHEET 1 OF 2)

CATEGORY	STATION	TO	STATION	MARKING TYPE	LOCATION	MARKING STOP LINE		LOCATING NO- PASSING ZONES		SPECIAL (01. TEMPORARY MARKING LINE PAINT 6-INCH)		SPECIAL (02. TEMPORARY MARKING LINE EPOXY 6-INCH)		SPECIAL (03. MARKING LINE EPOXY 6-INCH)		SPECIAL (04. MARKING LINE GROOVED WET REF EPOXY 6-INCH)		SPECIAL (05. MARKING LINE GROOVED WET REF EPOXY 10-INCH)		REMARKS	
						EPoxy 18-INCH WHITE	LF	MI	LF	LF	LF	LF	LF	LF	LF	LF	LF				
0010	356+13.90	-	724+77.84	-	STH 23			6.98												MILLED SURFACE	
0010	356+13.97	-	401+00	CL MARKINGS	STH 23				4,005											W/B OVERLAY	
0010	356+13.97	-	401+00	CL MARKINGS	STH 23				1,707											E/B OVERLAY	
0010	356+13.97	-	401+00.00	CL MARKINGS	STH 23															MILLED SURFACE	
0010	401+00.00	-	724+77.84	CL MARKINGS	STH 23				40,208											CIR SURFACE	
0010	401+00.00	-	724+77.84	CL MARKINGS	STH 23				40,208											W/B HMA LOWER LAYER	
0010	401+00.00	-	724+77.84	CL MARKINGS	STH 23				40,208											E/B HMA LOWER LAYER	
0010	401+00.00	-	724+77.84	CL MARKINGS	STH 23				19,671											W/B HMA UPPER LAYER	
0010	401+00.00	-	724+77.84	CL MARKINGS	STH 23				19,671											E/B HMA UPPER LAYER	
0010	356+13.90	-	366+13.82	RT EDGELINE	STH 23															FINAL EPOXY - ENTIRE PROJECT	
0010	356+13.97	-	366+19.69	LT EDGELINE	STH 23																
0010	356+13.97	-	358+92.04	CL SOLID-SKIP	STH 23																
0010	358+92.04	-	370+83.98	CL MARKINGS	STH 23																
0010	362+66.27	-	366+13.82	CHANNELIZING LANE LINE	STH 23																
0010	366+58.31	-	366+85.14	STOP BAR	STH 23																
0010	366+85.14	-	366+85.21	CL SOLID-SOLID	CTHM																
0010	366+86.96	-	366+95.66	CL SOLID-SOLID	CTHM																
0010	366+86.96	-	367+14.52	STOP BAR	CTHM																
0010	367+53.36	-	390+05.71	RT EDGELINE	STH 23																
0010	367+59.05	-	371+15.68	CHANNELIZING LANE LINE	STH 23																
0010	367+59.05	-	401+00.00	LT EDGELINE	STH 23																
0010	370+83.98	-	381+84.90	CL SKIP-SOLID	STH 23																
0010	381+84.90	-	384+69.92	CL SOLID-SOLID	STH 23																
0010	384+69.92	-	394+74.44	CL SOLID-SKIP	STH 23																
0010	390+05.71	-	391+04.31	RT EDGELINE-SKIP	STH 23																
0010	392+40.12	-	401+00.00	RT EDGELINE	STH 23																
0010	394+74.44	-	401+00.00	CL SKIP	STH 23																
0010	401+00.00	-	440+98.69	LT EDGELINE	STH 23																
0010	401+00.00	-	408+21.31	CL SKIP	STH 23																
0010	401+00.00	-	416+05.04	RT EDGELINE	STH 23																
0010	408+21.31	-	419+11.32	CL SKIP-SOLID	STH 23																
0010	416+05.04	-	418+26.64	RT EDGELINE-SKIP	STH 23																
0010	419+11.32	-	440+85.14	RT EDGELINE	STH 23																
0010	419+11.32	-	444+50.00	CL SOLID-SOLID	STH 23																
0010	438+90.00	-	440+85.10	CHANNELIZING LANE LINE	STH 23																
0010	441+36.38	-	441+61.41	STOP BAR	9TH AVE																
0010	441+53.61	-	441+57.77	CL SOLID-SOLID	CTHZ																
0010	441+57.77	-	441+82.49	STOP BAR	CTHZ																
0010	441+61.41	-	441+65.77	CL SOLID-SOLID	9TH AVE																
0010	442+19.35	-	521+80.88	RT EDGELINE	STH 23																
0010	442+35.68	-	444+38.41	CHANNELIZING LANE LINE	STH 23																
0010	442+35.68	-	494+85.83	LT EDGELINE	STH 23																
0010	444+50.00	-	452.75.00	CL SOLID-SKIP	STH 23																
0010	452+75.00	-	457+00.00	CL SKIP	STH 23																
SUBTOTAL SHEET 1						115		6.98	146,007	44,213	12,171	29,587	1,201								

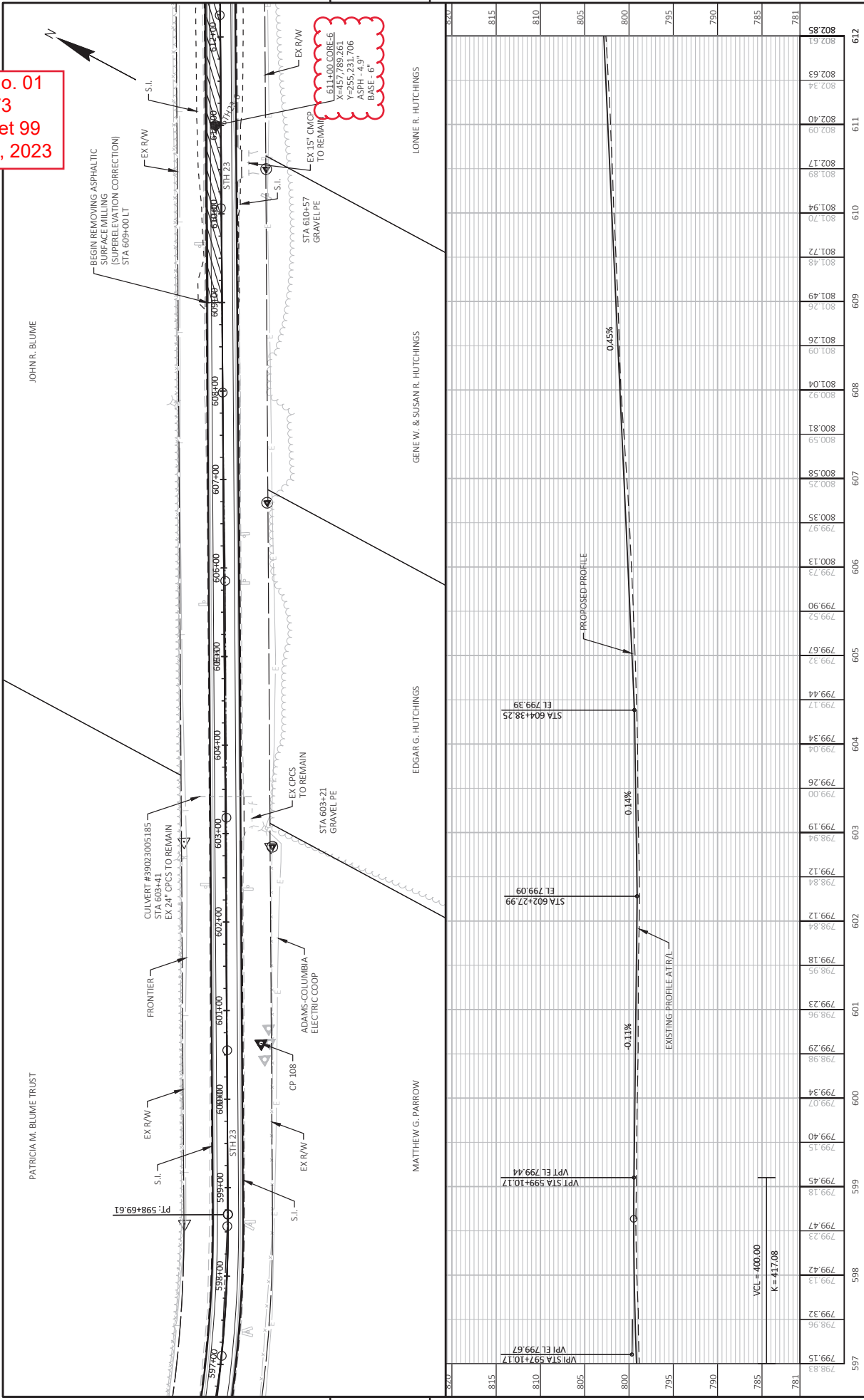
Addendum No. 01  
 ID 1430-02-73  
 Revised Sheet 80  
 September 1, 2023

Addendum No. 01  
ID 1430-02-73  
Revised Sheet 81  
September 1, 2023

PAVEMENT MARKING SHEET 2 OF 2

CATEGORY	STATION	TO	STATION	MARKING TYPE	LOCATION	MARKING STOP LINE EPOXY 1.8 INCH		LOCATING NO. PASSING ZONES		SPECIAL (01). TEMPORARY MARKING LINE PAINT 6-INCH		SPECIAL (02). TEMPORARY MARKING LINE EPOXY 6-INCH		SPECIAL (03). MARKING LINE EPOXY 6-INCH		SPECIAL (04). MARKING LINE GROOVED WET REF EPOXY 6- INCH		SPECIAL (05). MARKING LINE GROOVED WET REF EPOXY 10- INCH		REMARKS			
						LF	RF	MI	LF	RF	LF	RF	LF	RF	LF	RF	LF	RF	LF		RF		
0010	457+00.00	-	468+25.00	CL SKIP-SOLID	STH 23	-	-	-	-	-	-	-	-	1,406	-	-	-	-	-	-	-		
0010	468+25.00	-	497+74.87	CL SOLID-SOLID	STH 23	-	-	-	-	-	-	-	-	5,900	-	-	-	-	-	-	-		
0010	495+68.35	-	575+70.46	LT EDGELINE	STH 23	-	-	-	-	-	-	-	-	-	-	7,996	-	-	-	-	-		
0010	497+74.87	-	508+75.00	CL SOLID-SKIP	STH 23	-	-	-	-	-	-	-	-	1,375	-	-	-	-	-	-	-		
0010	508+75.00	-	511+35.69	CL SKIP	STH 23	-	-	-	-	-	-	-	-	65	-	-	-	-	-	-	-		
0010	511+35.69	-	522+50.00	CL SKIP-SOLID	STH 23	-	-	-	-	-	-	-	-	1,393	-	-	-	-	-	-	-		
0010	521+80.68	-	522+76.79	RT EDGELINE SKIP	STH 23	-	-	-	-	-	-	-	-	24	-	-	-	-	-	-	-		
0010	522+50.00	-	527+00.00	CL SOLID-SOLID	STH 23	-	-	-	-	-	-	-	-	900	-	-	-	-	-	-	-		
0010	522+76.79	-	718+98.70	RT EDGELINE	STH 23	-	-	-	-	-	-	-	-	-	-	19,617	-	-	-	-	-		
0010	527+00.00	-	537+75.00	CL SOLID-SKIP	STH 23	-	-	-	-	-	-	-	-	1,344	-	-	-	-	-	-	-		
0010	537+75.00	-	586+00.00	CL SKIP	STH 23	-	-	-	-	-	-	-	-	1,206	-	-	-	-	-	-	-		
0010	576+50.95	-	657+69.27	LT EDGELINE	STH 23	-	-	-	-	-	-	-	-	-	-	8,121	-	-	-	-	-		
0010	586+00.00	-	595+75.00	CL SKIP-SOLID	STH 23	-	-	-	-	-	-	-	-	1,219	-	-	-	-	-	-	-		
0010	595+75.00	-	605+75.00	CL SOLID-SKIP	STH 23	-	-	-	-	-	-	-	-	1,250	-	-	-	-	-	-	-		
0010	605+75.00	-	616+50.00	CL SKIP-SOLID	STH 23	-	-	-	-	-	-	-	-	1,344	-	-	-	-	-	-	-		
0010	616+50.00	-	671+00.00	CL SOLID-SOLID	STH 23	-	-	-	-	-	-	-	-	10,900	-	-	-	-	-	-	-		
0010	658+90.79	-	716+12.31	LT EDGELINE	STH 23	-	-	-	-	-	-	-	-	-	-	5,723	-	-	-	-	-		
0010	671+00.00	-	683+00.00	CL SOLID-SKIP	STH 23	-	-	-	-	-	-	-	-	1,500	-	-	-	-	-	-	-		
0010	683+00.00	-	708+75.00	CL SKIP	STH 23	-	-	-	-	-	-	-	-	644	-	-	-	-	-	-	-		
0010	708+75.00	-	724+77.84	CL SKIP-SOLID	STH 23	-	-	-	-	-	-	-	-	2,004	-	-	-	-	-	-	-		
0010	715+38.65	-	716+75.74	LT EDGELINE SKIP	STH 23	-	-	-	-	-	-	-	-	-	-	35	-	-	-	-	-		
0010	716+53.01	-	716+53.21	CL SOLID-SOLID	CTH B	-	-	-	-	-	-	-	-	20	-	-	-	-	-	-	-		
0010	716+75.74	-	717+86.24	LT EDGELINE	STH 23	-	-	-	-	-	-	-	-	-	-	112	-	-	-	-	-		
0010	717+86.24	-	719+17.19	LT EDGELINE SKIP	STH 23	-	-	-	-	-	-	-	-	-	-	33	-	-	-	-	-		
0010	717+78.81	-	718+25.28	RT EDGELINE	STH 23	-	-	-	-	-	-	-	-	-	-	49	-	-	-	-	-		
0010	718+98.70	-	719+62.50	RT EDGELINE SKIP	STH 23	-	-	-	-	-	-	-	-	-	-	16	-	-	-	-	-		
0010	719+17.19	-	724+77.84	LT EDGELINE	STH 23	-	-	-	-	-	-	-	-	-	-	562	-	-	-	-	-		
0010	719+62.50	-	724+77.84	RT EDGELINE	STH 23	-	-	-	-	-	-	-	-	-	-	515	-	-	-	-	-		
SUBTOTAL SHEET 2						0	0	0	0	0	0	0	0	32,470	42,802	0	0	0	0	0	0	0	
TOTAL 0010						115	6.98	146,007	44,213	44,841	72,389	1,101	0	0	0	0	0	0	0	0	0	0	0

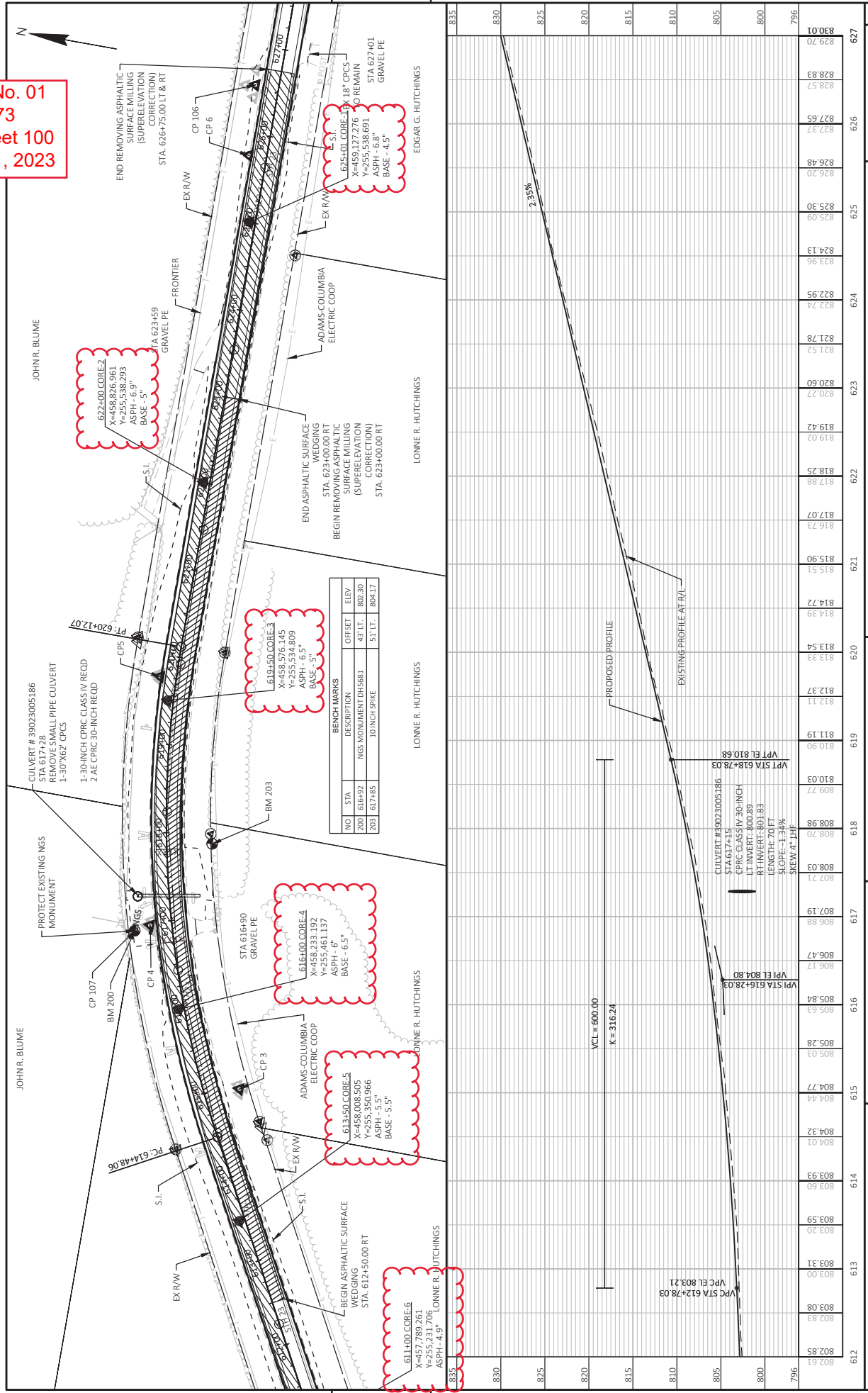
Addendum No. 01  
 ID 1430-02-73  
 Revised Sheet 99  
 September 1, 2023



STATION	EXISTING PROFILE (ELEVATION)	PROPOSED PROFILE (ELEVATION)
597	798.83	799.15
598	799.13	799.42
599	799.45	799.70
600	799.70	799.97
601	799.96	800.23
602	800.23	800.48
603	800.48	800.73
604	800.73	800.98
605	801.04	801.23
606	801.29	801.48
607	801.54	801.73
608	801.79	801.98
609	802.04	802.23
610	802.29	802.48
611	802.54	802.73
612	802.79	802.98
613	803.04	803.23
614	803.29	803.48
615	803.54	803.73
815	803.83	804.00

PROJECT NO: 1430-02-73  
 COUNTY: MARQUETTE  
 HWY: STH 23  
 PLAN AND PROFILE: STH 23  
 SHEET 99  
 FILE NAME: I:\CLIENTS\MADS\NW\395 WOOD NC REGION - WI RAPIDS\308 1430-02-03-STH 23\1430-02-03-SHEETS\PLAN\650.01-PP.DWG  
 LAYOUT NAME: S17632  
 PLOT DATE: 8/25/2023 1:09 PM  
 PLOT BY: MIKE LARSEN  
 PLOT NAME: 1 IN=100 FT  
 PLOT SCALE: 1 IN=100 FT  
 WWS007\CADDS SHEET 44

Addendum No. 01  
 ID 1430-02-73  
 Revised Sheet 100  
 September 1, 2023



STATION	ELEVATION
835	802.85
830	802.85
825	802.85
820	802.85
815	802.85
810	802.85
805	802.85
800	802.85
796	802.85
830	802.85
828.83	802.85
828.57	802.85
827.65	802.85
827.37	802.85
826.48	802.85
825.30	802.85
824.13	802.85
823.96	802.85
822.95	802.85
822.74	802.85
821.78	802.85
821.52	802.85
820.60	802.85
820.27	802.85
819.42	802.85
819.07	802.85
818.25	802.85
817.88	802.85
817.07	802.85
816.73	802.85
815.90	802.85
815.55	802.85
814.72	802.85
814.36	802.85
813.54	802.85
813.33	802.85
812.37	802.85
812.11	802.85
811.19	802.85
810.90	802.85
810.03	802.85
809.77	802.85
808.98	802.85
808.70	802.85
808.03	802.85
807.71	802.85
807.19	802.85
806.88	802.85
806.47	802.85
806.17	802.85
805.84	802.85
805.63	802.85
805.28	802.85
804.77	802.85
804.44	802.85
804.32	802.85
804.01	802.85
803.60	802.85
803.59	802.85
803.20	802.85
803.31	802.85
803.00	802.85
802.85	802.85

PROJECT NO: 1430-02-73  
 COUNTY: MARQUETTE  
 HWY: STH 23  
 PLAN AND PROFILE: STH 23  
 SHEET 100  
 FILE NAME: I:\CLIENTS\MADSN\W9595 WOOD NC REGION - WJ RAPIDS\908 1430-02-03 STH 23\1430-02-03 SHEETS\PLAN\050-01-PP.DWG  
 LAYOUT NAME: 518627  
 PLOT DATE: 8/25/2023 1:10 PM  
 PLOT BY: MIKE LARSEN  
 PLOT NAME: 1 IN=100 FT  
 WISDOT/CADDIS SHEET 44



Proposal Schedule of Items

Proposal ID: 20230912007 Project(s): 1430-02-73

Federal ID(s): WISC 2023615

SECTION: 0001

Contract Items

Alt Set ID:

Alt Mbr ID:

Proposal Line Number	Item ID Description	Approximate Quantity and Units	Unit Price	Bid Amount
0002	203.0100 Removing Small Pipe Culverts	5.000 EACH	_____.	_____.
0004	204.0110 Removing Asphaltic Surface	574.000 SY	_____.	_____.
0006	204.0115 Removing Asphaltic Surface Butt Joints	559.000 SY	_____.	_____.
0008	204.0120 Removing Asphaltic Surface Milling	127,112.000 SY	_____.	_____.
0010	204.0150 Removing Curb & Gutter	302.000 LF	_____.	_____.
0012	204.9180.S Removing (item description) 01. Asphaltic Surface Milling Superelevation Correction	3,422.000 SY	_____.	_____.
0014	205.0100 Excavation Common	4,137.000 CY	_____.	_____.
0016	208.1500.S Temporary Lane Shift During Culvert Work	8.000 EACH	_____.	_____.
0018	211.0101 Prepare Foundation for Asphaltic Paving (project) 01. 1430-02-73	1.000 EACH	_____.	_____.
0020	211.0400 Prepare Foundation for Asphaltic Shoulders	462.000 STA	_____.	_____.
0022	211.0700.S Prepare Foundation for CIR Base Layer (project) 01. 1430-02-73	1.000 EACH	_____.	_____.
0024	211.0800.S Base Repair for CIR Layer	7,151.000 CY	_____.	_____.
0026	213.0100 Finishing Roadway (project) 01. 1430- 02-73	1.000 EACH	_____.	_____.
0028	305.0110 Base Aggregate Dense 3/4-Inch	4,156.000 TON	_____.	_____.



Proposal Schedule of Items

Proposal ID: 20230912007 Project(s): 1430-02-73

Federal ID(s): WISC 2023615

SECTION: 0001

Contract Items

Alt Set ID:

Alt Mbr ID:

Proposal Line Number	Item ID Description	Approximate Quantity and Units	Unit Price	Bid Amount
0030	305.0120 Base Aggregate Dense 1 1/4-Inch	2,014.000 TON	_____.	_____.
0032	305.0504.S Hauling Excess Shoulder Material	370.000 CY	_____.	_____.
0034	327.1000.S CIR Asphaltic Base Layer	107,260.000 SY	_____.	_____.
0036	455.0605 Tack Coat	5,675.000 GAL	_____.	_____.
0038	455.0770.S Asphalt Stabilizing Agent	505.000 TON	_____.	_____.
0040	460.0105.S HMA Percent Within Limits (PWL) Test Strip Volumetrics	2.000 EACH	_____.	_____.
0042	460.0110.S HMA Percent Within Limits (PWL) Test Strip Density	2.000 EACH	_____.	_____.
0044	460.2005 Incentive Density PWL HMA Pavement	14,020.000 DOL	1.00000	14,020.00
0046	460.2007 Incentive Density HMA Pavement Longitudinal Joints	18,440.000 DOL	1.00000	18,440.00
0048	460.2010 Incentive Air Voids HMA Pavement	31,000.000 DOL	1.00000	31,000.00
0050	460.6223 HMA Pavement 3 MT 58-28 S	15,338.000 TON	_____.	_____.
0052	460.6224 HMA Pavement 4 MT 58-28 S	15,650.000 TON	_____.	_____.
0054	465.0105 Asphaltic Surface	559.000 TON	_____.	_____.
0056	465.0120 Asphaltic Surface Driveways and Field Entrances	49.000 TON	_____.	_____.
0058	465.0425 Asphaltic Shoulder Rumble Strips 2-Lane Rural	34,169.000 LF	_____.	_____.



Proposal Schedule of Items

Proposal ID: 20230912007 Project(s): 1430-02-73

Federal ID(s): WISC 2023615

SECTION: 0001

Contract Items

Alt Set ID:

Alt Mbr ID:

Proposal Line Number	Item ID Description	Approximate Quantity and Units	Unit Price	Bid Amount
0060	465.0475 Asphalt Centerline Rumble Strips 2-Lane Rural	29,255.000 LF	_____.	_____.
0062	522.0418 Culvert Pipe Reinforced Concrete Class IV 18-Inch	114.000 LF	_____.	_____.
0064	522.0424 Culvert Pipe Reinforced Concrete Class IV 24-Inch	68.000 LF	_____.	_____.
0066	522.0430 Culvert Pipe Reinforced Concrete Class IV 30-Inch	140.000 LF	_____.	_____.
0068	522.0436 Culvert Pipe Reinforced Concrete Class IV 36-Inch	66.000 LF	_____.	_____.
0070	522.1018 Apron Endwalls for Culvert Pipe Reinforced Concrete 18-Inch	2.000 EACH	_____.	_____.
0072	522.1024 Apron Endwalls for Culvert Pipe Reinforced Concrete 24-Inch	2.000 EACH	_____.	_____.
0074	522.1030 Apron Endwalls for Culvert Pipe Reinforced Concrete 30-Inch	4.000 EACH	_____.	_____.
0076	522.1036 Apron Endwalls for Culvert Pipe Reinforced Concrete 36-Inch	2.000 EACH	_____.	_____.
0078	601.0557 Concrete Curb & Gutter 6-Inch Sloped 36-Inch Type D	318.000 LF	_____.	_____.
0080	618.0100 Maintenance And Repair of Haul Roads (project) 01. 1430-02-73	1.000 EACH	_____.	_____.
0082	619.1000 Mobilization	1.000 EACH	_____.	_____.
0084	624.0100 Water	90.000 MGAL	_____.	_____.





Proposal Schedule of Items

Proposal ID: 20230912007 Project(s): 1430-02-73

Federal ID(s): WISC 2023615

SECTION: 0001

Contract Items

Alt Set ID:

Alt Mbr ID:

Proposal Line Number	Item ID Description	Approximate Quantity and Units	Unit Price	Bid Amount
0086	625.0100 Topsoil	4,119.000 SY	_____.	_____.
0088	628.1504 Silt Fence	5,506.000 LF	_____.	_____.
0090	628.1905 Mobilizations Erosion Control	3.000 EACH	_____.	_____.
0092	628.1910 Mobilizations Emergency Erosion Control	3.000 EACH	_____.	_____.
0094	628.2008 Erosion Mat Urban Class I Type B	4,119.000 SY	_____.	_____.
0096	628.7555 Culvert Pipe Checks	40.000 EACH	_____.	_____.
0098	628.7570 Rock Bags	136.000 EACH	_____.	_____.
0100	629.0210 Fertilizer Type B	2.590 CWT	_____.	_____.
0102	630.0130 Seeding Mixture No. 30	75.000 LB	_____.	_____.
0104	630.0500 Seed Water	47.000 MGAL	_____.	_____.
0106	633.5200 Markers Culvert End	10.000 EACH	_____.	_____.
0108	638.2102 Moving Signs Type II	18.000 EACH	_____.	_____.
0110	642.5001 Field Office Type B	1.000 EACH	_____.	_____.
0112	643.0300 Traffic Control Drums	734.000 DAY	_____.	_____.
0114	643.0420 Traffic Control Barricades Type III	36.000 DAY	_____.	_____.
0116	643.0705 Traffic Control Warning Lights Type A	48.000 DAY	_____.	_____.



Proposal Schedule of Items

Proposal ID: 20230912007 Project(s): 1430-02-73

Federal ID(s): WISC 2023615

SECTION: 0001

Contract Items

Alt Set ID:

Alt Mbr ID:

Proposal Line Number	Item ID Description	Approximate Quantity and Units	Unit Price	Bid Amount
0118	643.0900 Traffic Control Signs	3,424.000 DAY	_____.	_____.
0120	643.1000 Traffic Control Signs Fixed Message	36.000 SF	_____.	_____.
0124	643.5000 Traffic Control	1.000 EACH	_____.	_____.
0126	646.6120 Marking Stop Line Epoxy 18-Inch	115.000 LF	_____.	_____.
0128	648.0100 Locating No-Passing Zones	6.980 MI	_____.	_____.
0130	650.4500 Construction Staking Subgrade	523.000 LF	_____.	_____.
0132	650.5000 Construction Staking Base	523.000 LF	_____.	_____.
0134	650.6000 Construction Staking Pipe Culverts	5.000 EACH	_____.	_____.
0136	650.8000 Construction Staking Resurfacing Reference	36,864.000 LF	_____.	_____.
0138	650.9911 Construction Staking Supplemental Control (project) 01. 1430-02-73	1.000 EACH	_____.	_____.
0140	650.9920 Construction Staking Slope Stakes	2,237.000 LF	_____.	_____.
0142	690.0150 Sawing Asphalt	1,001.000 LF	_____.	_____.
0144	740.0440 Incentive IRI Ride	27,930.000 DOL	1.00000	27,930.00
0146	ASP.1T0A On-the-Job Training Apprentice at \$5.00/HR	2,400.000 HRS	5.00000	12,000.00
0148	ASP.1T0G On-the-Job Training Graduate at \$5.00/HR	1,980.000 HRS	5.00000	9,900.00



Proposal Schedule of Items

Proposal ID: 20230912007 Project(s): 1430-02-73

Federal ID(s): WISC 2023615

SECTION: 0001

Contract Items

Alt Set ID:

Alt Mbr ID:

Proposal Line Number	Item ID Description	Approximate Quantity and Units	Unit Price	Bid Amount
0150	SPV.0060 Special 01. Mowing	21.000 EACH	_____.	_____.
0152	SPV.0060 Special 02. Reestablish Section Corner Monuments	2.000 EACH	_____.	_____.
0154	SPV.0090 Special 01. Temporary Marking Line Paint 6-Inch	146,007.000 LF	_____.	_____.
0156	SPV.0090 Special 02. Temporary Marking Line Epoxy 6-Inch	44,213.000 LF	_____.	_____.
0158	SPV.0090 Special 03. Marking Line Epoxy 6-Inch	44,641.000 LF	_____.	_____.
0160	SPV.0090 Special 04. Marking Line Grooved Wet Ref Epoxy 6-Inch	72,389.000 LF	_____.	_____.
0162	SPV.0090 Special 05. Marking Line Grooved Wet Ref Epoxy 10-Inch	1,101.000 LF	_____.	_____.
0164	SPV.0180 Special 01. Resin Binder High Friction Surface Treatment	4,532.000 SY	_____.	_____.
0166	SPV.0195 Special 01. Asphaltic Surface Wedging	74.000 TON	_____.	_____.
Section: 0001			Total:	_____.
			Total Bid:	_____.

