



Wisconsin Department of Transportation

August 31, 2023

Division of Transportation Systems Development

Bureau of Project Development
4822 Madison Yards Way, 4th Floor South
Madison, WI 53705

Telephone: (608) 266-1631
Facsimile (FAX): (608) 266-8459

NOTICE TO ALL CONTRACTORS:

Proposal #09: 1620-02-76, WISC 2023616
Necedah-Babcock
Juneau Co Line To STH 173 N
STH 80
Wood County

Letting of September 12, 2023

This is Addendum No. 01, which provides for the following:

Special Provisions:

Revised Special Provisions	
Article No.	Description
23	Storm Sewer

Schedule of Items:

Added Bid Item Quantities					
Bid Item	Item Description	Unit	Proposal Total Prior to Addendum	Quantity Added	Proposal Total After Addendum
608.0430	Storm Sewer Pipe Reinforced Concrete Class IV 30-Inch	LF	0	1180	1180

Deleted Bid Item Quantities					
Bid Item	Item Description	Unit	Proposal Total Prior to Addendum	Proposal Quantity Change (-)	Proposal Total After Addendum
608.3030	Storm Sewer Pipe Class III-A 30-Inch	LF	1180	-1180	0

Plan Sheets:

Revised Plan Sheets	
Plan Sheet	Plan Sheet Title (brief description of changes to sheet)
64	Storm Sewer Plan -Change 30-inch pipe from Class III-A to Class IV
65	Storm Sewer Plan -Change 30-inch pipe from Class III-A to Class IV
66	Storm Sewer Plan -Change 30-inch pipe from Class III-A to Class IV
126	Miscellaneous Quantities -Revised Storm Sewer table

The responsibility for notifying potential subcontractors and suppliers of these changes remains with the prime contractor.

Sincerely,

Mike Coleman

Proposal Development Specialist
Proposal Management Section

ADDENDUM NO. 01

1620-02-76

August 31, 2023

Special Provisions

23. Storm Sewer.

Replace entire article language with the following:

Replace standard spec 608.3.3(5) with the following:

Provide joint ties at all joints on concrete storm sewer system infall and outfall pipes, including endwalls, and adjacent to select structures as shown in the plans. Ties are not required on installations with concrete masonry endwalls unless the plans show otherwise.

~~per 520-005b (20180319)~~

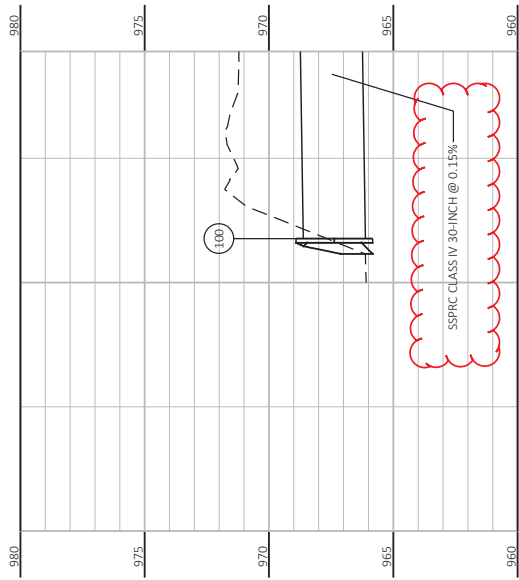
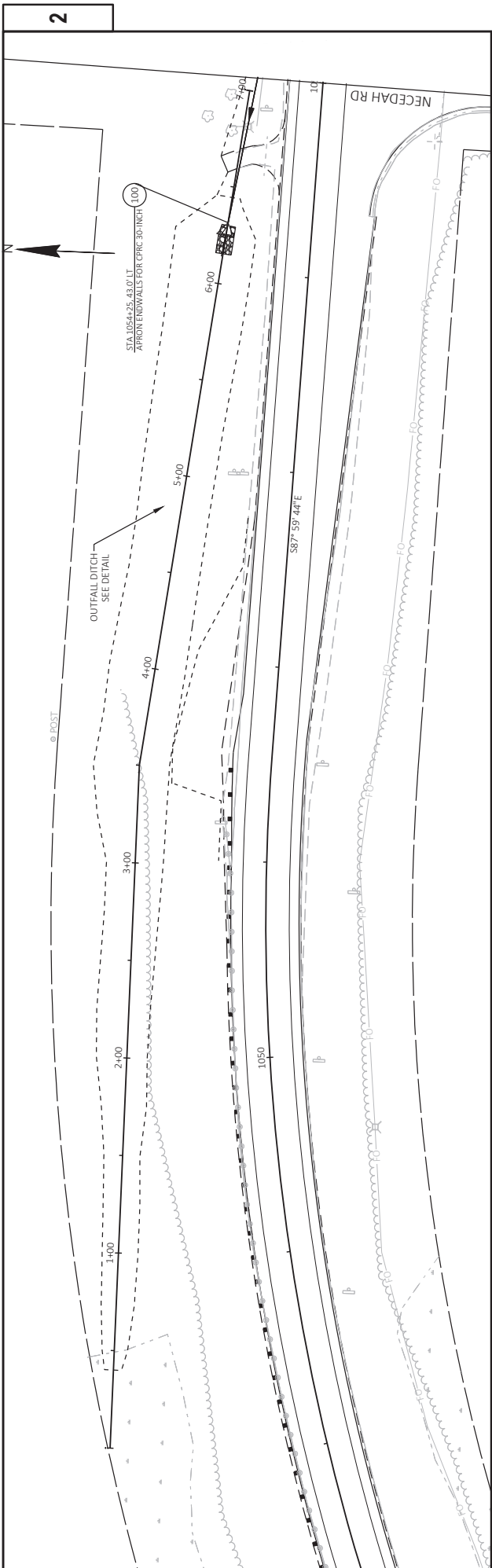
Schedule of Items

Attached, dated August 31, 2023, are the revised Schedule of Items Pages 1 - 12.

Plan Sheets

The following 8½ x 11-inch sheets are attached and made part of the plans for this proposal:
Revised: 64, 65, 66, and 126.

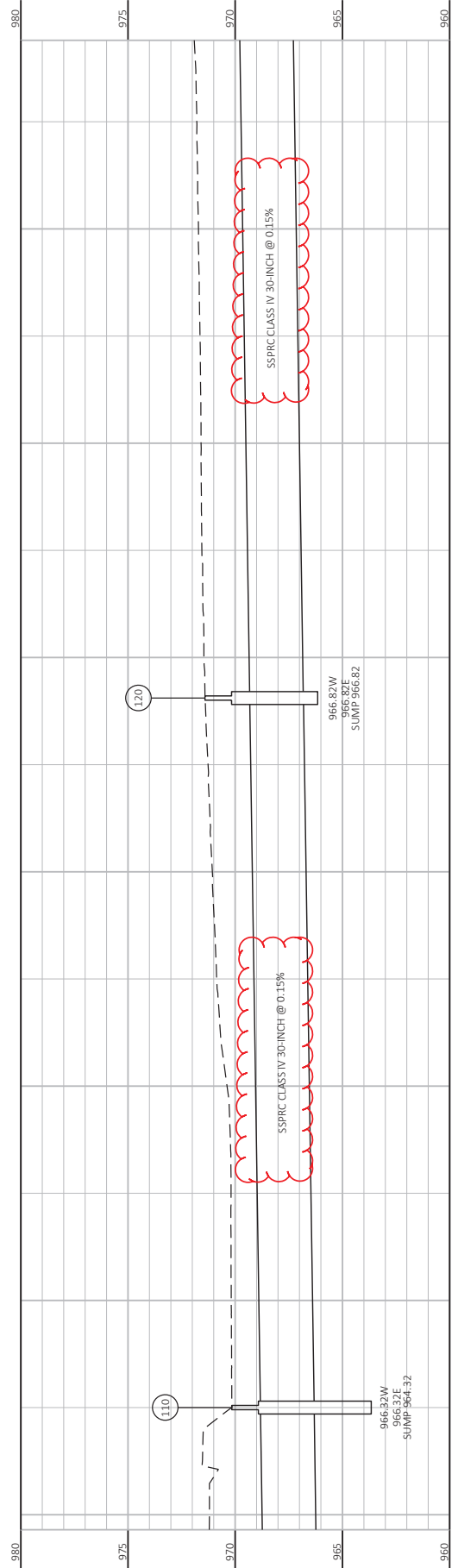
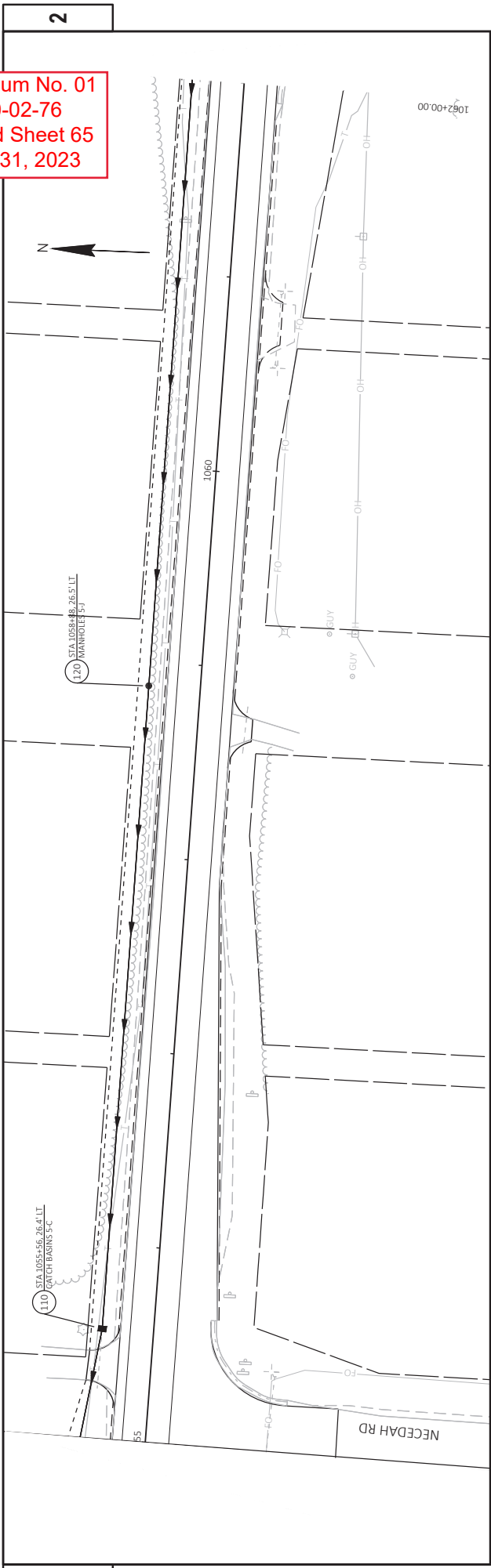
END OF ADDENDUM



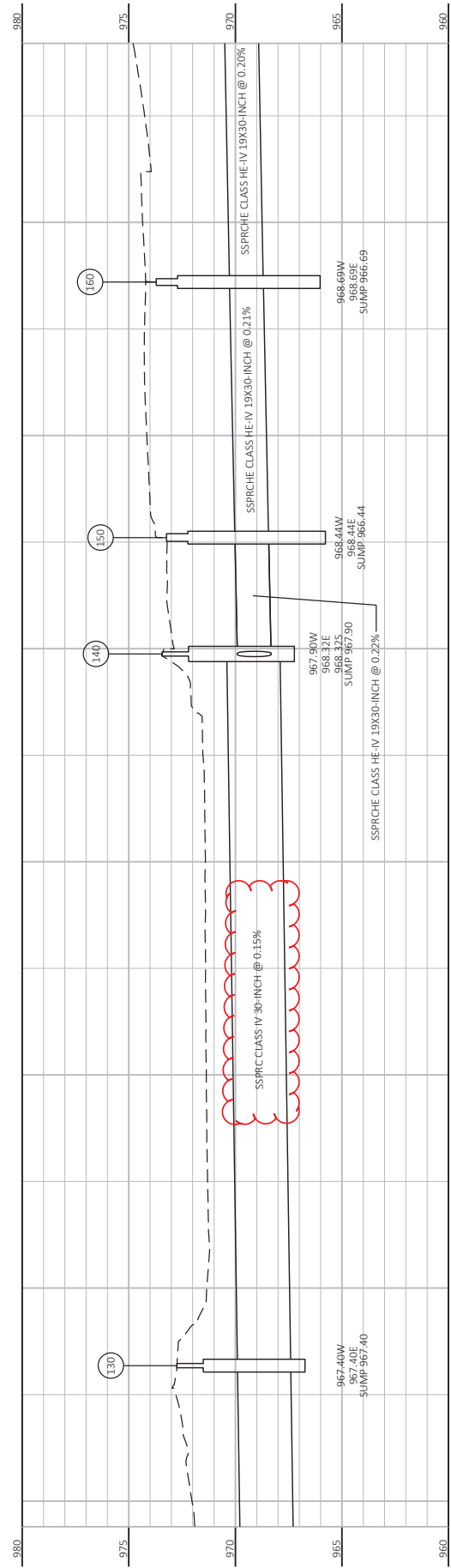
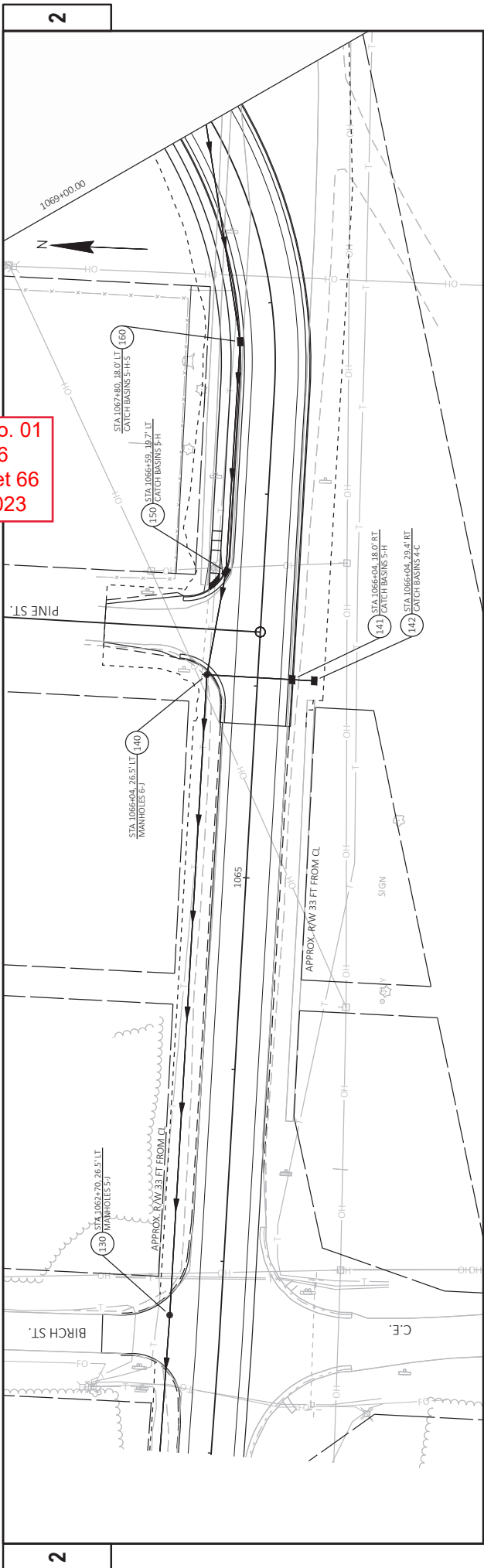
Addendum No. 01
 ID 1620-02-76
 Revised Sheet 64
 August 31, 2023

2

Addendum No. 01
 ID 1620-02-76
 Revised Sheet 65
 August 31, 2023



Addendum No. 01
ID 1620-02-76
Revised Sheet 66
August 31, 2023



Addendum No. 01
 ID 1620-02-76
 Revised Sheet 128
 August 31, 2023

RIPRAP

STATION	LOCATION	Stage	CY	SY
PROJECT 1620-02-76 CATEGORY 0010				
1042+85	STH 80 RT	4	4	5
PROJECT 1620-02-76 CATEGORY 0010 TOTALS				
			4	5
PROJECT 1620-02-76 CATEGORY 0020				
6'0+15	Outfall	3	9	12
PROJECT 1620-02-76 CATEGORY 0020 TOTALS				
			9	12

3

STORM SEWER PIPES

FROM - TO	LOCATION	Stage	LF	608.2314 STORM SEWER PIPE REINFORCED CONCRETE HORIZONTAL ELLIPTICAL CLASS HE-III 14X23-INCH	608.2414 STORM SEWER PIPE REINFORCED CONCRETE HORIZONTAL ELLIPTICAL CLASS HE-IV 19X30-INCH	608.2419 STORM SEWER PIPE REINFORCED CONCRETE HORIZONTAL ELLIPTICAL CLASS HE-IV 19X30-INCH	JOINTS* EACH	INLET ELEVATION	DISCHARGE ELEVATION	SLOPE F/T
PROJECT 1620-02-76 CATEGORY 0020										
100 - 110	ALIGNMENT - 80	3					16 (ALL)	966.32	966.12	0.0015
110 - 120	ALIGNMENT - 80	3					6 (3 at 110; 3 at 120)	966.82	966.32	0.0015
120 - 130	ALIGNMENT - 80	3					6 (3 at 120; 3 at 130)	967.40	966.82	0.0015
130 - 140	ALIGNMENT - 80	3					6 (3 at 130; 3 at 140)	967.40	967.40	0.0015
140 - 141	ALIGNMENT - 80	3					3 (3 at 140)	968.41	968.32	0.0020
141 - 142	ALIGNMENT - 80	3						968.87	968.83	0.0040
140 - 150	ALIGNMENT - 80	3	11				3 (3 at 140)	968.44	968.32	0.0022
150 - 160	ALIGNMENT - 80	3						968.69	968.44	0.0021
160 - 170	ALIGNMENT - 80	3					6 (3 at 160; 3 at 170)	968.93	968.69	0.0020
170 - 180	ALIGNMENT - 80	3					6 (3 at 170; 3 at 180)	969.17	968.93	0.0021
180 - 200	ALIGNMENT - 80	3					5 (5 at 180)	969.34	969.17	0.0020
200 - 201	ALIGNMENT - 80	3						969.79	969.76	0.0040
200 - 210	ALIGNMENT - 80	3	9				4 (ALL)	969.45	969.34	0.0020
180 - 300	ALIGNMENT - 80	3						969.24	969.17	0.0020
310 - 301	ALIGNMENT - 80	3	12					969.86	969.82	0.0040
300 - 310	ALIGNMENT - 80	3						969.40	969.24	0.0021
310 - 320	ALIGNMENT - 80	3						969.58	969.40	0.0020
320 - 321	ALIGNMENT - 80	3						970.03	970.00	0.0040
320 - 330	ALIGNMENT - 80	3	8					969.68	969.58	0.0020
330 - 340	ALIGNMENT - 80	3						969.76	969.68	0.0022
340 - 350	ALIGNMENT - 80	3						969.82	969.76	0.0021
350 - 355	ALIGNMENT - 80	3						969.85	969.82	0.0019
355 - 356	ALIGNMENT - 80	3	24					970.36	970.27	0.0040
355 - 360	ALIGNMENT - 80	3						969.99	969.85	0.0022
PROJECT 1620-02-76 CATEGORY 0020 TOTALS										
			17				1180			

*NON-BID ITEM; FOR INFORMATION ONLY.

MISCELLANEOUS QUANTITIES

SHEET: 126

PROJECT NO: 1620-02-76

HWY: STH 80

COUNTY: WOOD

3



Proposal Schedule of Items

Proposal ID: 20230912009 Project(s): 1620-02-76

Federal ID(s): WISC 2023616

SECTION: 0001 Contract Items

Alt Set ID: Alt Mbr ID:

Proposal Line Number	Item ID Description	Approximate Quantity and Units	Unit Price	Bid Amount
0002	201.0110 Clearing	6,751.000 SY	_____.	_____.
0004	201.0210 Grubbing	1,467.000 SY	_____.	_____.
0006	203.0100 Removing Small Pipe Culverts	7.000 EACH	_____.	_____.
0008	204.0100 Removing Concrete Pavement	1,248.000 SY	_____.	_____.
0010	204.0110 Removing Asphaltic Surface	10,365.000 SY	_____.	_____.
0012	204.0115 Removing Asphaltic Surface Butt Joints	821.000 SY	_____.	_____.
0014	204.0120 Removing Asphaltic Surface Milling	80,593.000 SY	_____.	_____.
0016	204.0150 Removing Curb & Gutter	1,181.000 LF	_____.	_____.
0018	204.0155 Removing Concrete Sidewalk	403.000 SY	_____.	_____.
0020	204.0165 Removing Guardrail	1,291.000 LF	_____.	_____.
0022	204.0180 Removing Delineators and Markers	3.000 EACH	_____.	_____.
0024	204.0210 Removing Manholes	2.000 EACH	_____.	_____.
0026	204.0220 Removing Inlets	3.000 EACH	_____.	_____.
0028	204.0245 Removing Storm Sewer (size) 01. 10-Inch	152.000 LF	_____.	_____.
0030	204.0280 Sealing Pipes	1.000 EACH	_____.	_____.
0032	205.0100 Excavation Common	7,408.000 CY	_____.	_____.



Proposal Schedule of Items

Proposal ID: 20230912009 Project(s): 1620-02-76

Federal ID(s): WISC 2023616

SECTION: 0001 Contract Items

Alt Set ID: Alt Mbr ID:

Proposal Line Number	Item ID Description	Approximate Quantity and Units	Unit Price	Bid Amount
0034	208.0100 Borrow	261.000 CY	_____.	_____.
0036	209.2500 Backfill Granular Grade 2	3,826.000 TON	_____.	_____.
0038	211.0101 Prepare Foundation for Asphaltic Paving (project) 01. 1620-02-76	1.000 EACH	_____.	_____.
0040	213.0100 Finishing Roadway (project) 01. 1620-02-76	1.000 EACH	_____.	_____.
0042	305.0110 Base Aggregate Dense 3/4-Inch	1,896.000 TON	_____.	_____.
0044	305.0120 Base Aggregate Dense 1 1/4-Inch	6,741.000 TON	_____.	_____.
0046	325.0100 Pulverize and Relay	54,386.000 SY	_____.	_____.
0048	374.1020.S QMP Pulverize and Relay Compaction	54,386.000 SY	_____.	_____.
0050	416.0160 Concrete Driveway 6-Inch	53.000 SY	_____.	_____.
0052	416.1010 Concrete Surface Drains	9.000 CY	_____.	_____.
0054	450.4000 HMA Cold Weather Paving	4,374.000 TON	_____.	_____.
0056	455.0605 Tack Coat	10,645.000 GAL	_____.	_____.
0058	460.0105.S HMA Percent Within Limits (PWL) Test Strip Volumetrics	1.000 EACH	_____.	_____.
0060	460.0110.S HMA Percent Within Limits (PWL) Test Strip Density	2.000 EACH	_____.	_____.
0062	460.2000 Incentive Density HMA Pavement	1,670.000 DOL	1.00000	1,670.00



Proposal Schedule of Items

Proposal ID: 20230912009 Project(s): 1620-02-76

Federal ID(s): WISC 2023616

SECTION: 0001 Contract Items

Alt Set ID: Alt Mbr ID:

Proposal Line Number	Item ID Description	Approximate Quantity and Units	Unit Price	Bid Amount
0064	460.6223 HMA Pavement 3 MT 58-28 S	9,478.000 TON	_____.	_____.
0066	460.6224 HMA Pavement 4 MT 58-28 S	16,467.000 TON	_____.	_____.
0068	460.6424 HMA Pavement 4 MT 58-28 H	2,041.000 TON	_____.	_____.
0070	465.0105 Asphaltic Surface	8.000 TON	_____.	_____.
0072	465.0110 Asphaltic Surface Patching	106.000 TON	_____.	_____.
0074	465.0120 Asphaltic Surface Driveways and Field Entrances	54.000 TON	_____.	_____.
0076	465.0315 Asphaltic Flumes	22.000 SY	_____.	_____.
0078	465.0475 Asphalt Centerline Rumble Strips 2-Lane Rural	17,200.000 LF	_____.	_____.
0080	520.1030 Apron Endwalls for Culvert Pipe 30-Inch	1.000 EACH	_____.	_____.
0082	520.3418 Culvert Pipe Class III-A Non-metal 18-Inch	54.000 LF	_____.	_____.
0084	520.8000 Concrete Collars for Pipe	6.000 EACH	_____.	_____.
0086	520.8700 Cleaning Culvert Pipes	3.000 EACH	_____.	_____.
0088	521.1024 Apron Endwalls for Culvert Pipe Steel 24-Inch	1.000 EACH	_____.	_____.
0090	521.1518 Apron Endwalls for Culvert Pipe Sloped Side Drains Steel 18-Inch 6 to 1	2.000 EACH	_____.	_____.
0092	521.3124 Culvert Pipe Corrugated Steel 24-Inch	2.000 LF	_____.	_____.



Proposal Schedule of Items

Proposal ID: 20230912009 Project(s): 1620-02-76

Federal ID(s): WISC 2023616

SECTION: 0001 Contract Items

Alt Set ID: Alt Mbr ID:

Proposal Line Number	Item ID Description	Approximate Quantity and Units	Unit Price	Bid Amount
0094	522.0130 Culvert Pipe Reinforced Concrete Class III 30-Inch	14.000 LF	_____.	_____.
0096	522.1030 Apron Endwalls for Culvert Pipe Reinforced Concrete 30-Inch	5.000 EACH	_____.	_____.
0098	601.0120 Concrete Curb Type J	110.000 LF	_____.	_____.
0100	601.0411 Concrete Curb & Gutter 30-Inch Type D	1,811.000 LF	_____.	_____.
0102	601.0557 Concrete Curb & Gutter 6-Inch Sloped 36-Inch Type D	521.000 LF	_____.	_____.
0104	601.0588 Concrete Curb & Gutter 4-Inch Sloped 36-Inch Type TBT	240.000 LF	_____.	_____.
0106	602.0405 Concrete Sidewalk 4-Inch	4,079.000 SF	_____.	_____.
0108	602.0505 Curb Ramp Detectable Warning Field Yellow	100.000 SF	_____.	_____.
0110	602.0605 Curb Ramp Detectable Warning Field Radial Yellow	15.000 SF	_____.	_____.
0112	606.0200 Riprap Medium	13.000 CY	_____.	_____.
0114	608.2314 Storm Sewer Pipe Reinforced Concrete Horizontal Elliptical Class HE-III 14x23-Inch	47.000 LF	_____.	_____.
0116	608.2414 Storm Sewer Pipe Reinforced Concrete Horizontal Elliptical Class HE-IV 14x23-Inch	17.000 LF	_____.	_____.
0118	608.2419 Storm Sewer Pipe Reinforced Concrete Horizontal Elliptical Class HE-IV 19x30-Inch	992.000 LF	_____.	_____.



Proposal Schedule of Items

Proposal ID: 20230912009 Project(s): 1620-02-76

Federal ID(s): WISC 2023616

SECTION: 0001 Contract Items

Alt Set ID: Alt Mbr ID:

Proposal Line Number	Item ID Description	Approximate Quantity and Units	Unit Price	Bid Amount
0122	611.0420 Reconstructing Manholes	1.000 EACH	_____.	_____.
0124	611.0530 Manhole Covers Type J	9.000 EACH	_____.	_____.
0126	611.0612 Inlet Covers Type C	5.000 EACH	_____.	_____.
0128	611.0624 Inlet Covers Type H	8.000 EACH	_____.	_____.
0130	611.0639 Inlet Covers Type H-S	3.000 EACH	_____.	_____.
0132	611.1004 Catch Basins 4-FT Diameter	5.000 EACH	_____.	_____.
0134	611.1005 Catch Basins 5-FT Diameter	7.000 EACH	_____.	_____.
0136	611.1006 Catch Basins 6-FT Diameter	4.000 EACH	_____.	_____.
0138	611.2005 Manholes 5-FT Diameter	4.000 EACH	_____.	_____.
0140	611.2006 Manholes 6-FT Diameter	4.000 EACH	_____.	_____.
0142	614.0397 Guardrail Mow Strip Emulsified Asphalt	910.000 SY	_____.	_____.
0144	614.2300 MGS Guardrail 3	162.500 LF	_____.	_____.
0146	614.2330 MGS Guardrail 3 K	1,225.000 LF	_____.	_____.
0148	614.2500 MGS Thrie Beam Transition	150.000 LF	_____.	_____.
0150	614.2610 MGS Guardrail Terminal EAT	4.000 EACH	_____.	_____.
0152	618.0100 Maintenance And Repair of Haul Roads (project) 01. 1620-02-76	1.000 EACH	_____.	_____.



Proposal Schedule of Items

Proposal ID: 20230912009 Project(s): 1620-02-76

Federal ID(s): WISC 2023616

SECTION: 0001 Contract Items

Alt Set ID: Alt Mbr ID:

Proposal Line Number	Item ID Description	Approximate Quantity and Units	Unit Price	Bid Amount
0154	619.1000 Mobilization	1.000 EACH	_____.	_____.
0156	624.0100 Water	340.000 MGAL	_____.	_____.
0158	625.0100 Topsoil	12,510.000 SY	_____.	_____.
0160	628.1504 Silt Fence	5,835.000 LF	_____.	_____.
0162	628.1520 Silt Fence Maintenance	5,835.000 LF	_____.	_____.
0164	628.1905 Mobilizations Erosion Control	7.000 EACH	_____.	_____.
0166	628.1910 Mobilizations Emergency Erosion Control	4.000 EACH	_____.	_____.
0168	628.2008 Erosion Mat Urban Class I Type B	11,970.000 SY	_____.	_____.
0170	628.2021 Erosion Mat Class II Type A	560.000 SY	_____.	_____.
0172	628.7005 Inlet Protection Type A	27.000 EACH	_____.	_____.
0174	628.7010 Inlet Protection Type B	15.000 EACH	_____.	_____.
0176	628.7015 Inlet Protection Type C	12.000 EACH	_____.	_____.
0178	628.7020 Inlet Protection Type D	2.000 EACH	_____.	_____.
0180	628.7504 Temporary Ditch Checks	50.000 LF	_____.	_____.
0182	628.7515.S Stone Ditch Checks	12.000 CY	_____.	_____.
0184	628.7555 Culvert Pipe Checks	29.000 EACH	_____.	_____.



Proposal Schedule of Items

Proposal ID: 20230912009 Project(s): 1620-02-76

Federal ID(s): WISC 2023616

SECTION: 0001 Contract Items

Alt Set ID: Alt Mbr ID:

Proposal Line Number	Item ID Description	Approximate Quantity and Units	Unit Price	Bid Amount
0186	628.7570 Rock Bags	180.000 EACH	_____.	_____.
0188	629.0210 Fertilizer Type B	5.000 CWT	_____.	_____.
0190	630.0130 Seeding Mixture No. 30	13.800 LB	_____.	_____.
0192	630.0140 Seeding Mixture No. 40	324.000 LB	_____.	_____.
0194	630.0500 Seed Water	279.000 MGAL	_____.	_____.
0196	633.5200 Markers Culvert End	10.000 EACH	_____.	_____.
0198	634.0612 Posts Wood 4x6-Inch X 12-FT	1.000 EACH	_____.	_____.
0200	634.0614 Posts Wood 4x6-Inch X 14-FT	9.000 EACH	_____.	_____.
0202	634.0616 Posts Wood 4x6-Inch X 16-FT	31.000 EACH	_____.	_____.
0204	634.0618 Posts Wood 4x6-Inch X 18-FT	18.000 EACH	_____.	_____.
0206	634.0620 Posts Wood 4x6-Inch X 20-FT	5.000 EACH	_____.	_____.
0208	634.0622 Posts Wood 4x6-Inch X 22-FT	1.000 EACH	_____.	_____.
0210	637.2210 Signs Type II Reflective H	91.280 SF	_____.	_____.
0212	637.2230 Signs Type II Reflective F	148.000 SF	_____.	_____.
0214	638.2102 Moving Signs Type II	29.000 EACH	_____.	_____.
0216	638.2602 Removing Signs Type II	23.000 EACH	_____.	_____.



Proposal Schedule of Items

Proposal ID: 20230912009 Project(s): 1620-02-76

Federal ID(s): WISC 2023616

SECTION: 0001 Contract Items

Alt Set ID: Alt Mbr ID:

Proposal Line Number	Item ID Description	Approximate Quantity and Units	Unit Price	Bid Amount
0218	638.3000 Removing Small Sign Supports	37.000 EACH	_____.	_____.
0220	638.4000 Moving Small Sign Supports	6.000 EACH	_____.	_____.
0222	642.5201 Field Office Type C	1.000 EACH	_____.	_____.
0224	643.0300 Traffic Control Drums	12,580.000 DAY	_____.	_____.
0226	643.0420 Traffic Control Barricades Type III	3,062.000 DAY	_____.	_____.
0228	643.0705 Traffic Control Warning Lights Type A	6,124.000 DAY	_____.	_____.
0230	643.0900 Traffic Control Signs	51,783.000 DAY	_____.	_____.
0232	643.0920 Traffic Control Covering Signs Type II	40.000 EACH	_____.	_____.
0234	643.1000 Traffic Control Signs Fixed Message	144.000 SF	_____.	_____.
0236	643.3105 Temporary Marking Line Paint 4-Inch	22,505.000 LF	_____.	_____.
0238	643.3120 Temporary Marking Line Epoxy 4-Inch	16,735.000 LF	_____.	_____.
0240	643.5000 Traffic Control	1.000 EACH	_____.	_____.
0242	644.1440 Temporary Pedestrian Surface Matting	1,950.000 SF	_____.	_____.
0244	644.1601 Temporary Pedestrian Curb Ramp	128.000 DAY	_____.	_____.
0246	644.1605 Temporary Pedestrian Detectable Warning Field	90.000 SF	_____.	_____.
0248	644.1810 Temporary Pedestrian Barricade	1,635.000 LF	_____.	_____.



Proposal Schedule of Items

Proposal ID: 20230912009 Project(s): 1620-02-76

Federal ID(s): WISC 2023616

SECTION: 0001 Contract Items

Alt Set ID: Alt Mbr ID:

Proposal Line Number	Item ID Description	Approximate Quantity and Units	Unit Price	Bid Amount
0250	645.0120 Geotextile Type HR	17.000 SY	_____.	_____.
0252	645.0130 Geotextile Type R	39.000 SY	_____.	_____.
0254	646.1020 Marking Line Epoxy 4-Inch	17,264.000 LF	_____.	_____.
0256	646.1040 Marking Line Grooved Wet Ref Epoxy 4-Inch	48,924.000 LF	_____.	_____.
0258	646.3040 Marking Line Grooved Wet Ref Epoxy 8-Inch	660.000 LF	_____.	_____.
0260	646.4520 Marking Line Same Day Epoxy 4-Inch	5,016.000 LF	_____.	_____.
0262	646.5320 Marking Railroad Crossing Epoxy	2.000 EACH	_____.	_____.
0264	646.6120 Marking Stop Line Epoxy 18-Inch	85.000 LF	_____.	_____.
0266	646.7420 Marking Crosswalk Epoxy Transverse Line 6-Inch	165.000 LF	_____.	_____.
0268	646.8320 Marking Parking Stall Epoxy	41.000 LF	_____.	_____.
0270	648.0100 Locating No-Passing Zones	4.900 MI	_____.	_____.
0272	650.4000 Construction Staking Storm Sewer	26.000 EACH	_____.	_____.
0274	650.4500 Construction Staking Subgrade	24,215.000 LF	_____.	_____.
0276	650.5000 Construction Staking Base	24,215.000 LF	_____.	_____.
0278	650.5500 Construction Staking Curb Gutter and Curb & Gutter	1,790.000 LF	_____.	_____.



Proposal Schedule of Items

Proposal ID: 20230912009 Project(s): 1620-02-76

Federal ID(s): WISC 2023616

SECTION: 0001 Contract Items

Alt Set ID: Alt Mbr ID:

Proposal Line Number	Item ID Description	Approximate Quantity and Units	Unit Price	Bid Amount
0280	650.6000 Construction Staking Pipe Culverts	4.000 EACH	_____.	_____.
0282	650.8000 Construction Staking Resurfacing Reference	25,077.000 LF	_____.	_____.
0284	650.9000 Construction Staking Curb Ramps	11.000 EACH	_____.	_____.
0286	650.9500 Construction Staking Sidewalk (project) 01.1620-02-76	1.000 EACH	_____.	_____.
0288	650.9911 Construction Staking Supplemental Control (project) 01. 1620-02-76	1.000 EACH	_____.	_____.
0290	650.9920 Construction Staking Slope Stakes	3,605.000 LF	_____.	_____.
0292	690.0150 Sawing Asphalt	2,050.000 LF	_____.	_____.
0294	690.0250 Sawing Concrete	119.000 LF	_____.	_____.
0296	740.0440 Incentive IRI Ride	19,877.000 DOL	1.00000	19,877.00
0298	ASP.1T0A On-the-Job Training Apprentice at \$5.00/HR	2,400.000 HRS	5.00000	12,000.00
0300	ASP.1T0G On-the-Job Training Graduate at \$5.00/HR	1,980.000 HRS	5.00000	9,900.00
0302	SPV.0030 Special 01. Fertilizer for Lawn Type Turf	2.700 CWT	_____.	_____.
0304	SPV.0055 Special 01. Incentive Density PWL HMA Pavement	20,000.000 DOL	1.00000	20,000.00
0306	SPV.0055 Special 02. Incentive Air Voids HMA Pavement	26,170.000 DOL	1.00000	26,170.00



Proposal Schedule of Items

Proposal ID: 20230912009 Project(s): 1620-02-76

Federal ID(s): WISC 2023616

SECTION: 0001 Contract Items

Alt Set ID: Alt Mbr ID:

Proposal Line Number	Item ID Description	Approximate Quantity and Units	Unit Price	Bid Amount
0308	SPV.0055 Special 03. Incentive Density HMA Pavement Longitudinal Joints	30,470.000 DOL	1.00000	30,470.00
0310	SPV.0060 Special 01. Research and Locate Existing Land Parcel Monuments	7.000 EACH	_____.	_____.
0312	SPV.0060 Special 02. Verify and Replace Existing Land Parcel Monuments	7.000 EACH	_____.	_____.
0314	SPV.0060 Special 03. Site Mowing	8.000 EACH	_____.	_____.
0316	SPV.0060 Special 04. Grading and Shaping STH 173 S Intersection	1.000 EACH	_____.	_____.
0318	SPV.0060 Special 05. Grading and Shaping Curb Ramps	5.000 EACH	_____.	_____.
0320	SPV.0090 Special 01. Ditch Restoration	45.000 LF	_____.	_____.
0322	SPV.0090 Special 02. Construction Staking Outfall	600.000 LF	_____.	_____.
0324	SPV.0090 Special 03. Marking Stop Line Epoxy 24-Inch	60.000 LF	_____.	_____.
0326	SPV.0090 Special 04. Salvage and Reinstall MGS Guardrail System	555.000 LF	_____.	_____.
0328	SPV.0180 Special 01. Preparing Topsoil for Lawn Type Turf	4,590.000 SY	_____.	_____.
0330	SPV.0195 Special 01. Base Aggregate Disintegrated Granite	157.000 TON	_____.	_____.
0332	608.0430 Storm Sewer Pipe Reinforced Concrete Class IV 30-Inch	1,180.000 LF	_____.	_____.
Section: 0001			Total:	_____.

Total Bid: _____.

