



Wisconsin Department of Transportation

Division of Transportation Systems Development

Bureau of Project Development
4822 Madison Yards Way, 4th Floor South
Madison, WI 53705

September 11, 2023

Telephone: (608) 266-1631
Facsimile (FAX): (608) 266-8459

NOTICE TO ALL CONTRACTORS:

**Proposal #18: 8510-03-72,
Cornucopia – Port Wing
Bark Point Rd – CTH A
STH 13
Douglas & Bayfield Counties**

Letting of September 12, 2023

This is Addendum No. 02, which provides for the following:

Special Provisions:

Revised Special Provisions	
Article No.	Description
4	Traffic

Schedule of Items:

Revised Bid Item Quantities					
Bid Item	Item Description	Unit	Proposal Total Prior to Addendum	Proposal Quantity Change (-)	Proposal Total After Addendum
633.5200	Markers Culvert End	Each	44	-2	42
625.0500	Salvaged Topsoil	SY	5225	-562	4663
628.1504	Silt Fence	LF	1910	-270	1640
628.1520	Silt Fence Maintenance	LF	1910	-270	1640
628.2004	Erosion Mat Class I Type B	SY	5158	-562	4596
628.7555	Culvert Pipe Checks	Each	51	-7	44
629.0210	Fertilizer Type B	CWT	3.3	-.3	3.0
630.1020	Seeding Mixture No. 20	LB	139	-15	124
630.0500	Seed Water	MGAL	5.9	-.6	5.3
643.0900	Traffic Control Signs	DAY	1360	-770	590
646.1020	Marking Line Epoxy 4-Inch	LF	3698	-245	3453

Deleted Bid Item Quantities					
Bid Item	Item Description	Unit	Proposal Total Prior to Addendum	Proposal Quantity Change (-)	Proposal Total After Addendum
520.1084	Apron Endwalls for Culvert Pipe 84-Inch	Each	2	-2	0
521.6184	Culvert Pipe Corrugated Steel Aluminum Coated 84-Inch	LF	86	-86	0
643.0420	Traffic Control Barricades Type III	Day	114	-114	0
643.0715	Traffic Control Warning Lights Type C	Day	228	-228	0
643.1050	Traffic Control PCMS	Day	14	-14	0

Plan Sheets:

Revised Plan Sheets	
Plan Sheet	Plan Sheet Title (brief description of changes to sheet)
9	Removed culvert pipe from list at station 315+96
18,19,21,22	Updated miscellaneous quantities
33	Removed work to be done at station 315+96
81	Made note for existing pipe to remain

Deleted Plan Sheets	
Plan Sheet	Plan Sheet Title (brief description of why sheet was deleted)
10-14	Removed detour sheets

The responsibility for notifying potential subcontractors and suppliers of these changes remains with the prime contractor.

Sincerely,

Mike Coleman

Proposal Development Specialist
Proposal Management Section

ADDENDUM NO. 02

8510-03-72

September 11, 2023

Specials

4. Traffic.

Replace paragraph one with the following:

Flagging operations shall be used to maintain traffic during the culvert replacements. Maintain a minimum distance of one mile between lane closures or flagging operations.

Delete paragraph three. No detour will be needed.

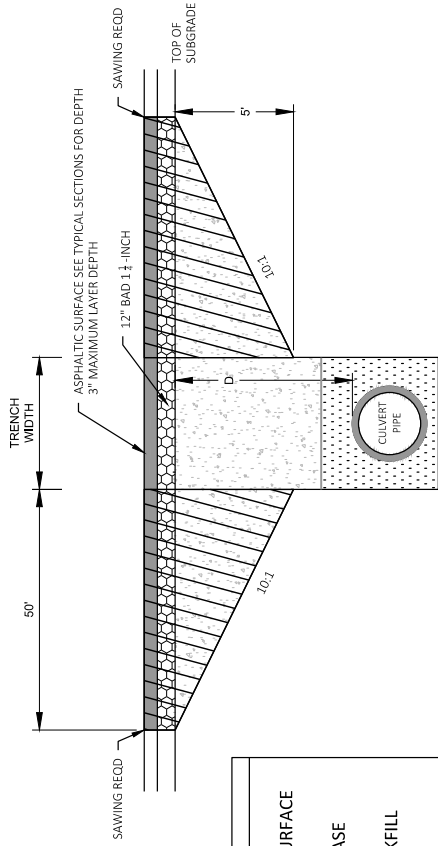
Schedule of Items

Attached, dated September 11, 2023, are the revised Schedule of Items Pages 1 – 5.

Plan Sheets

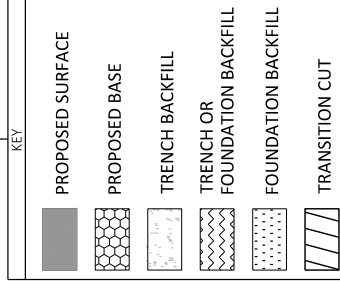
The following 8½ x 11-inch sheets are attached and made part of the plans for this proposal:
Revised:22.

END OF ADDENDUM



DEPTH D < 6 FT

TRANSITION CUT DEPTH (T) = THE LESSER OF DEPTH TO CENTER OF PIPE OR 5 FT.
DO NOT EXTEND TRANSITION CUT BELOW HORIZONTAL CENTER OF PIPE.



Addendum No. 02
ID 8510-03-72
Revised Sheet 9
September 11, 2023

CULVERT PIPE TRANSITION

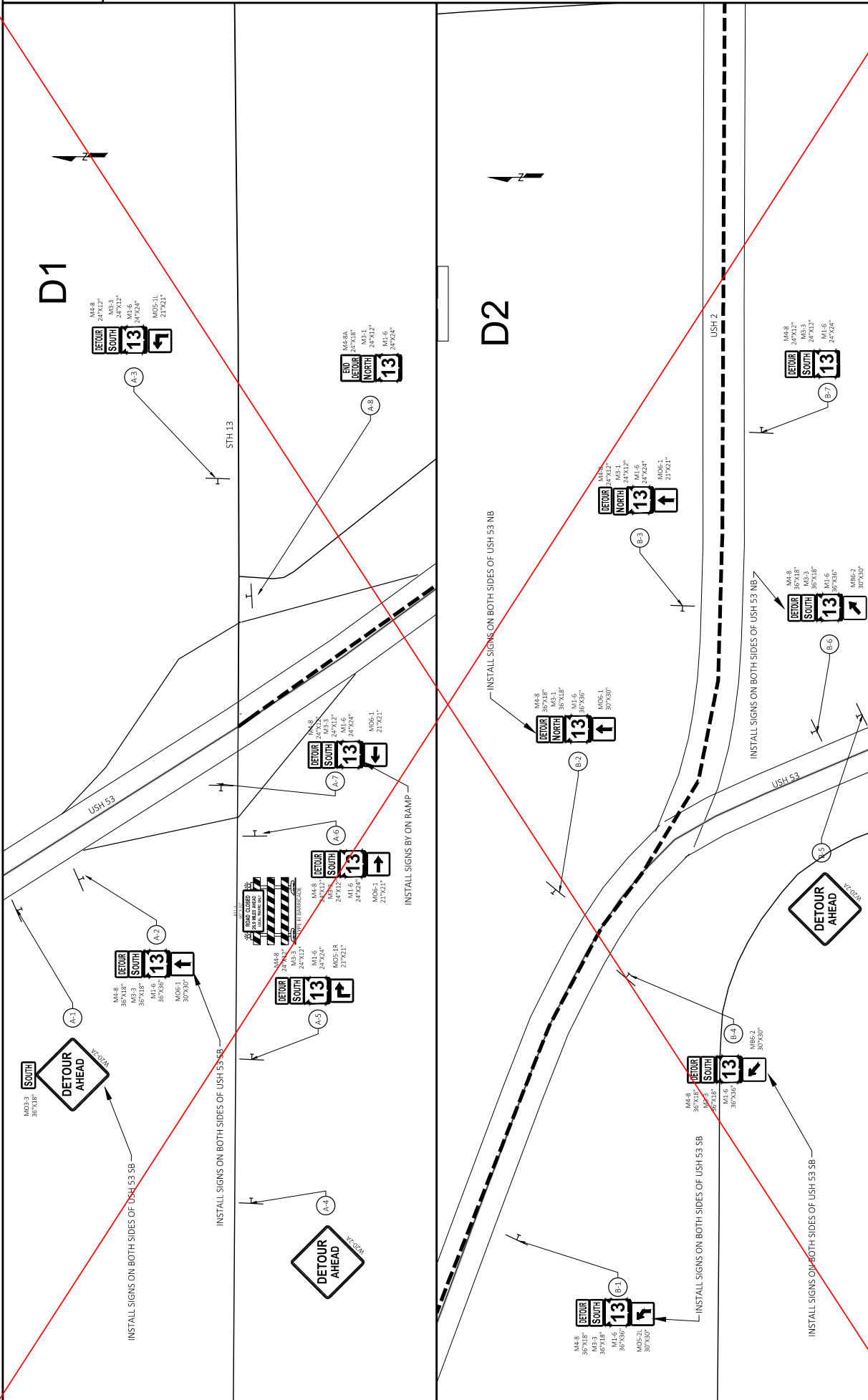
ROUTE	STA (CL)	DEPTH D (FT)	PIPE DIA (IN)	REMARKS
STH 13	62+00 (1)	2.3'	24	REPLACEMENT
STH 13	85+23 (1)	2.6'	24	REPLACEMENT
STH 13	97+70 (1)	4.9'	24	REPLACEMENT
STH 13	114+57 (1)	1'	24	REPLACEMENT
STH 13	130+43 (1)	1'	28 X 20	REPLACEMENT
STH 13	136+07 (1)	1.3'	24	REPLACEMENT
STH 13	177+95 (1)	1'	28 X 20	REPLACEMENT
STH 13	213+70 (1)	2'	28 X 20	REPLACEMENT
STH 13	385+95 (2)	3'	84	REPLACEMENT
STH 13	200+27 (3)	5'	36	REPLACEMENT
STH 13	459+50 (5)	1.5'	59 X 33	REPLACEMENT
STH 13	3+30 (4)	1'	24	REPLACEMENT
STH 13	41+45 (1)	1'	24	REPLACEMENT
STH 13	110+90 (1)	2.5'	24	REPLACEMENT
STH 13	232+00 (5)	1.7'	24	REPLACEMENT
STH 13	234+45 (5)	3.7'	24	REPLACEMENT
STH 13	246+50 (5)	4.7'	24	REPLACEMENT
STH 13	287+68 (5)	1.3'	24	REPLACEMENT
STH 13	295+80 (5)	2.1'	24	REPLACEMENT
STH 13	374+00 (6)	2'	24	REPLACEMENT

NOTES

TRANSITION CUT IS PAID AS EXCAVATION COMMON.
TRANSITION CUT WIDTH IS FROM SUBGRADE SHOULDER POINT TO SUBGRADE SHOULDER POINT.
BACKFILL TRANSITION CUT AREAS WITH FOUNDATION AND TRENCH BACKFILL AS SPECIFIED IN STANDARD SPEC 520.

2

D1



2

E

11

SHEET

1 IN 500 FT

PLOT NAME:

FINNEGAN, MITCHELL

PLOT NAME:

DETOUR

7/27/2022 9:51 PM

PLOT DATE:

COUNTY: BAYFIELD & DOUGLAS

HWY: 13

PROJECT NO: 8510-03-72

FILE NAME: R:\PDS\C3D\85100303\SHEETS\PLAN\DETOUR.DWG

LAYOUT NAME: Plan Dbl 1 IN 500 FT

WISDOT/CADDIS SHEET 14

2

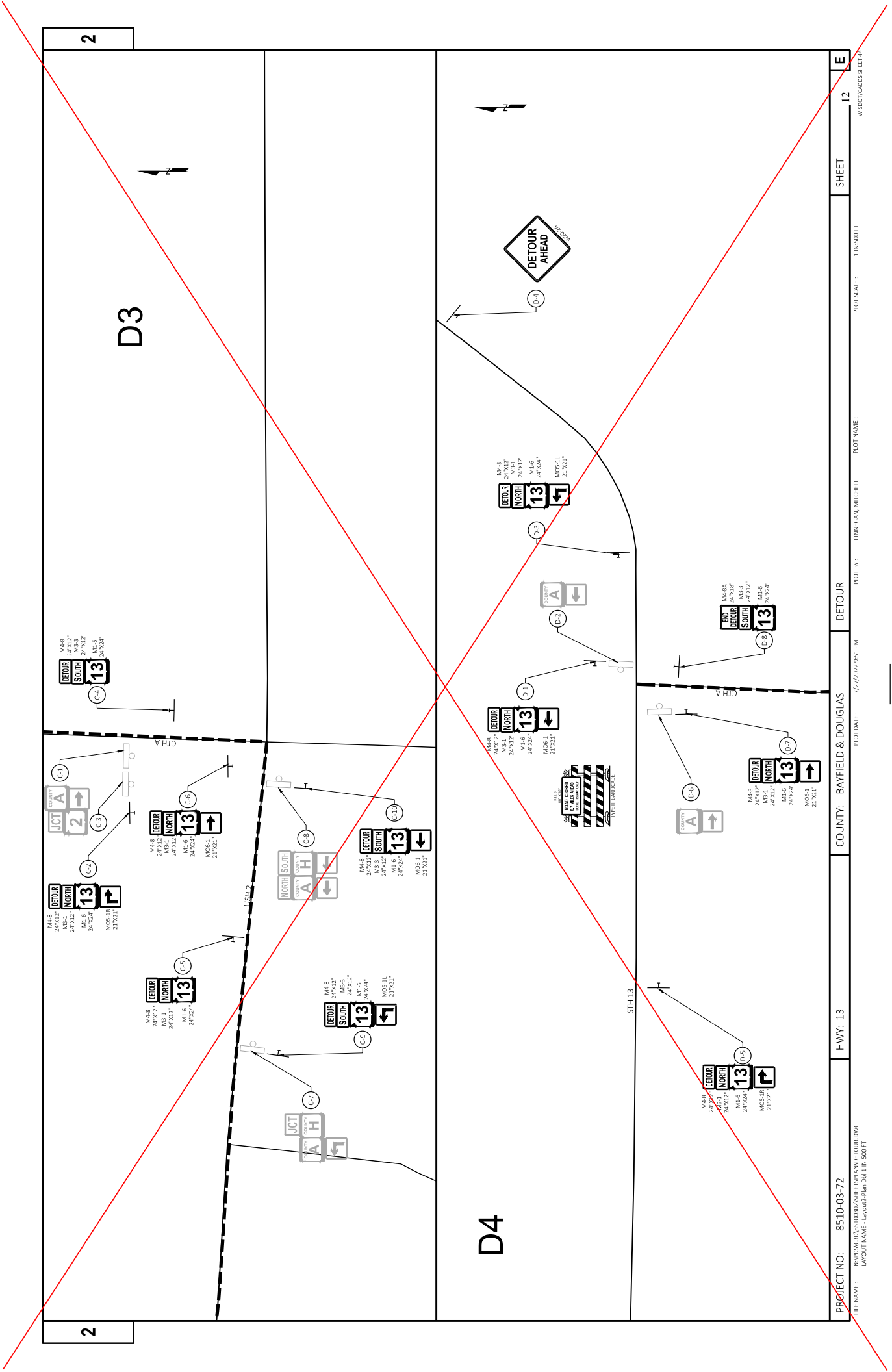
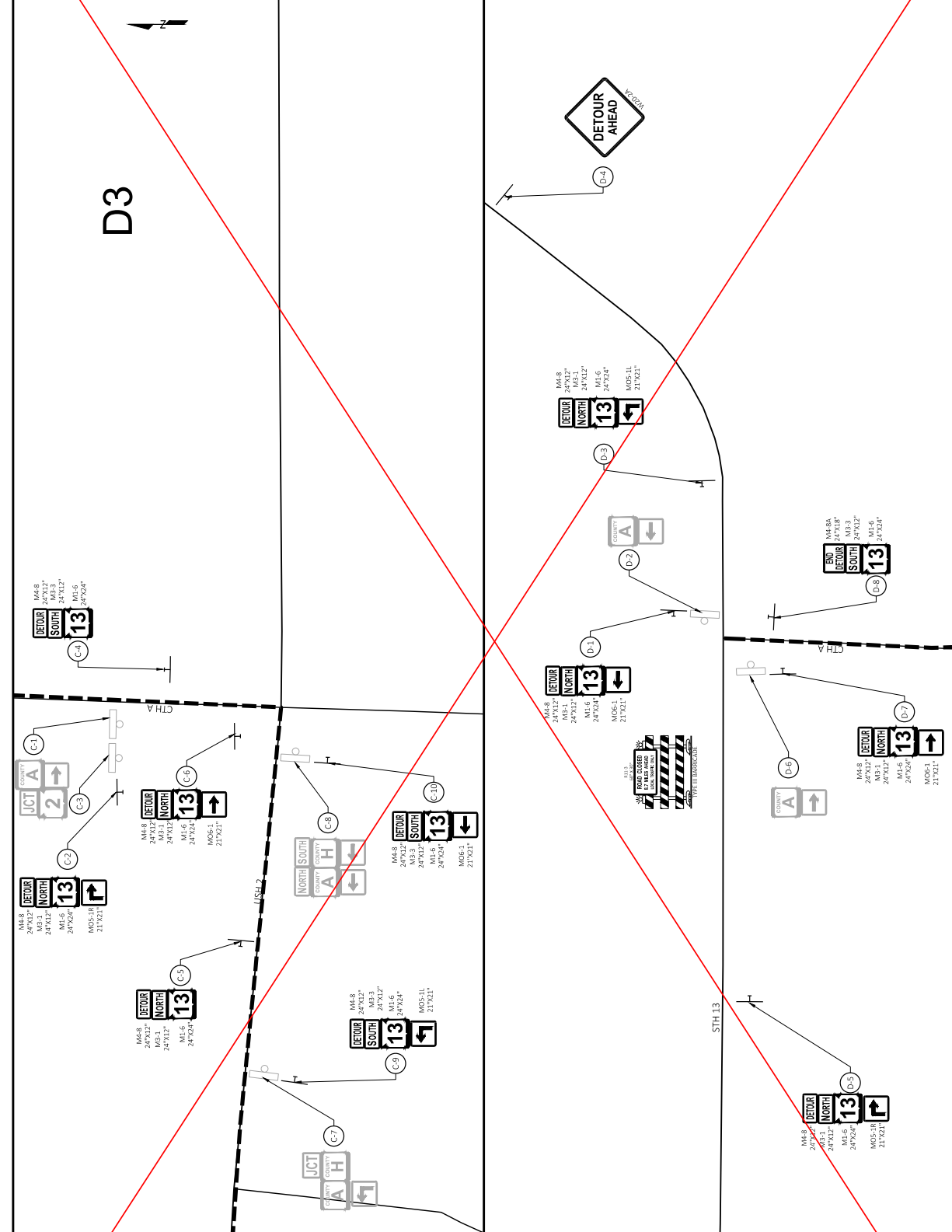
D3

2

D4

PROJECT NO: 8510-03-72	HWY: 13	COUNTY: BAYFIELD & DOUGLAS	DETOUR	PLOT BY: FINNEGAN, MITCHELL	PLOT NAME:	PLOT SCALE: 1 IN=500 FT	SHEET	12	E
------------------------	---------	----------------------------	--------	-----------------------------	------------	-------------------------	-------	----	---

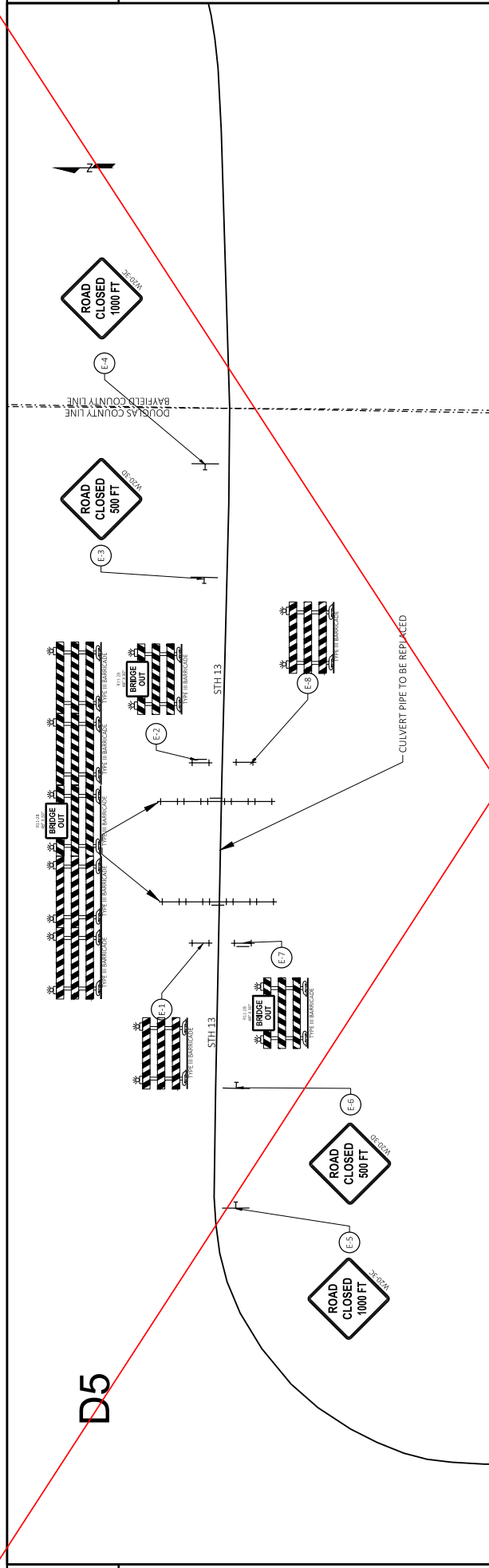
FILE NAME: R:\PDS\CD\85100303\SHEETS\PLAN\DETOUR.DWG
 LAYOUT NAME: Layout2-Plan-1b.1 IN 500 FT
 DATE: 7/27/2022 9:51 PM



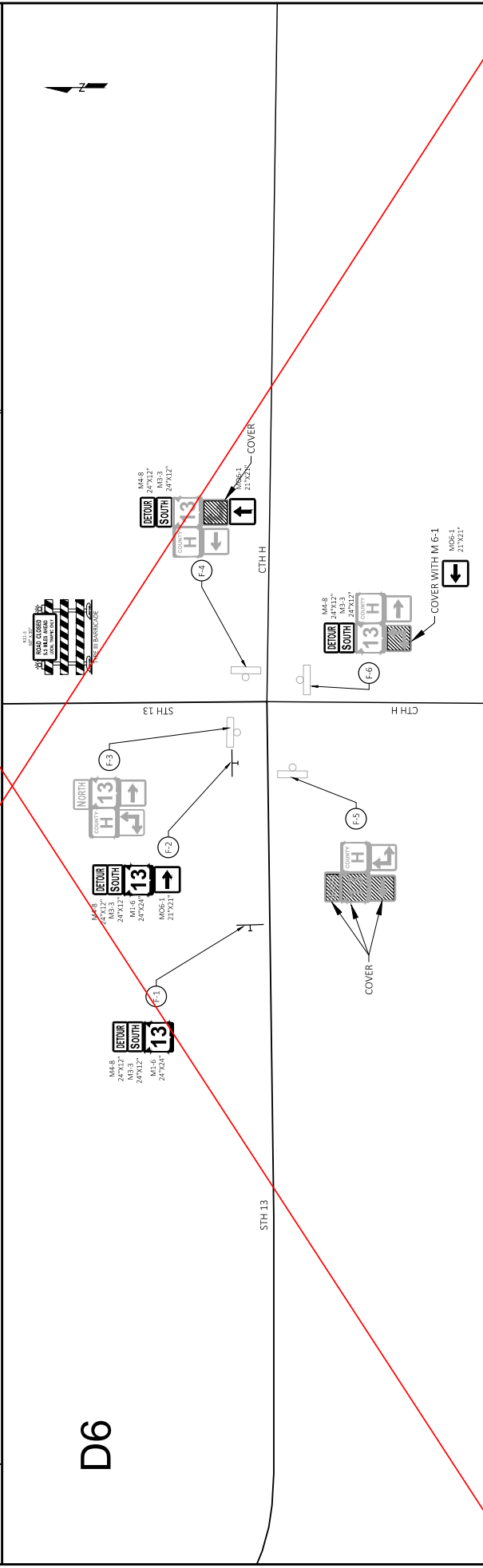
2

D5

2



D6



PROJECT NO: 8510-03-72	HWY: 13	COUNTY: BAYFIELD & DOUGLAS	DETOUR	SHEET 13	E
FILE NAME: R:\PDS\CD\85100303\SHEETS\PLAN\DETOUR.DWG					
LAYOUT NAME: Layout3Plan.Lb1 1 IN 500 FT					
PLOT DATE: 7/27/2022 9:51 PM					
PLOT BY: FINNEGAN, MITCHELL					
PLOT NAME:					
PLOT SCALE: 1 IN 500 FT					
WISDOT/CADDS SHEET 14					

Addendum No. 02
ID 8510-03-72
Revised Sheet 18
September 11, 2023

STATION	LOCATION	EACH	520-3424		521-6184		521-5728		522-0424		522-2429	
			TEMPORARY LANE SHIFT DURING CULVERT WORK	CULVERT PIPE CLASS III-A NON-METAL 24-INCH	CULVERT PIPE CLASS III-A NON-METAL 36-INCH	CULVERT PIPE CORRUGATED STEEL ALUMINUM COATED 84-INCH	PIPE ARCH CORRUGATED STEEL ALUMINUM COATED 28X20-INCH	CULVERT PIPE REINFORCED CONCRETE CLASS IV 24-INCH	CULVERT PIPE REINFORCED CONCRETE HORIZONTAL ELLIPTICAL CLASS HE-IV 29X45-INCH			
52+00(1)		1		70								
85+23(1)		1		68								
97+70(1)		1		60								
114+57(1)		1							64			
130+43(1)		1							56			
136+07(1)		1							54			
177+95(1)		1							58			
213+73(1)		1					64					
315+94(2)		1				36						
200+27(3)		1			104							
459+53(3)		1										50
13+30(4)		1							38			
42+34(4)		1							52			
110+93(4)		1		60								
232+03(5)		1										74
234+45(5)		1		76								
276+53(5)		1		102								
287+68(5)		1										58
295+83(5)		1		60								
374+03(6)		1		56								
TOTAL 0010		19		552	104	36	64	454			50	

Addendum No. 02
 ID 8510-03-72
 Revised Sheet 19
 September 11, 2023

3

3

STATION	LOCATION	520.1024	520.1030	520.1036	520.1048	520.1084	520.8700	521.1128	522.1024	522.2429	525.0936	633.5200	REMARKS
		APRON ENDWALLS FOR CULVERT PIPE 24-INCH EACH	APRON ENDWALLS FOR CULVERT PIPE 30-INCH EACH	APRON ENDWALLS FOR CULVERT PIPE 36-INCH EACH	APRON ENDWALLS FOR CULVERT PIPE 48-INCH EACH	APRON ENDWALLS FOR CULVERT PIPE 60-INCH EACH	CLEAN W/ CULVERT PIPES EACH	APRON ENDWALLS FOR PIPE ARCH STEEL 28X20 INCH EACH	A-30N ENDWALLS FOR CULVERT PIPE REINFORCED CONCRETE 24-INCH EACH	APRON ENDWALLS FOR CULVERT PIPE REINFORCED CONCRETE HORIZONTAL ELLIPTICAL 28X45-INCH EACH	APRON ENDWALLS FOR CULVERT PIPE ALUMINUM 36-INCH EACH	MASKERS CULVERT END EACH	
51+20(1)	.7&RT	-	-	-	-	-	-	-	-	-	-	2	
62+00(1)	.7&RT	2	-	-	-	-	-	-	-	-	-	2	
83+23(1)	.7&RT	2	-	-	-	-	-	-	-	-	-	2	
97+70(1)	.7&RT	2	-	-	-	-	-	-	-	-	-	2	
114+57(1)	.7&RT	-	-	-	-	-	-	-	2	-	-	2	
130+43(1)	.7&RT	-	-	-	-	-	-	-	2	-	-	2	
136+07(1)	.7&RT	-	-	-	-	-	-	-	2	-	-	2	
148+76(1)	.7&RT	2	-	-	-	-	-	-	2	-	-	2	
177+99(1)	.7&RT	-	-	-	-	-	-	-	2	-	-	2	
213+70(1)	.7&RT	-	-	-	-	-	-	2	-	-	-	2	
233+30(1)	.7&RT	-	-	-	-	-	-	-	-	-	-	2	
263+00(1)	.7&RT	1	-	-	-	-	-	-	-	-	2	-	
292+93(1)	.7&RT	-	-	-	-	-	-	-	-	-	-	-	
299+28(2)	.7&RT	-	-	-	-	-	-	-	-	-	-	-	
319+98(2)	.7&RT	-	-	-	-	-	-	-	-	-	-	-	
324+34(3)	.7&RT	-	-	2	-	-	-	-	-	-	-	-	
58+20(3)	LT	1	-	-	-	-	1	-	-	-	-	-	
103+98(3)	LT	1	-	-	-	-	-	-	-	-	-	-	
129+39(3)	RT	-	-	2	-	-	1	-	-	-	-	-	
200+27(3)	.7&RT	-	-	2	-	-	-	-	-	-	-	2	
206+19(3)	RT	-	-	1	-	-	-	-	-	-	-	-	
226+85(3)	.7&RT	-	-	-	-	-	1	-	-	-	-	-	
231+80(3)	LT	1	-	-	-	-	1	-	-	-	-	-	
303+57(3)	.7&RT	-	-	2	-	-	-	-	-	-	-	-	
310+04(3)	LT	2	-	-	-	-	-	-	-	-	-	-	
363+20(3)	RT	-	-	-	-	-	1	-	-	-	-	-	
373+15(1)	RT	-	-	1	-	-	1	-	-	-	-	-	
377+48(3)	RT	-	-	-	-	-	-	-	-	-	-	-	
392+35(3)	LT	-	-	1	-	-	-	-	-	-	-	-	
421+50(3)	.7&RT	-	-	-	-	-	1	-	-	-	-	-	
452+00(3)	.7&RT	-	-	-	-	-	-	-	-	-	-	-	
459+50(3)	.7&RT	-	-	-	-	-	-	-	2	-	-	-	
11+30(4)	.7&RT	-	-	-	-	-	-	-	-	-	-	2	
34+56(4)	.7&RT	-	-	-	2	-	-	-	-	-	-	2	
42+14(4)	.7&RT	-	-	-	-	-	-	-	2	-	-	-	
110+90(4)	.7&RT	2	-	-	-	-	-	-	-	-	-	-	
130+60(4)	RT	-	-	1	-	-	-	-	-	-	-	-	
153+50(4)	.7&RT	-	-	-	-	-	1	-	-	-	-	-	
232+00(5)	.7&RT	-	-	-	-	-	-	-	2	-	-	-	
234+45(5)	.7&RT	2	-	-	-	-	-	-	-	-	-	-	
246+50(5)	.7&RT	2	-	-	-	-	-	-	-	-	-	-	
287+68(5)	.7&RT	-	-	-	-	-	-	-	2	-	-	-	
295+80(5)	.7&RT	2	-	-	-	-	-	-	-	-	-	-	
374+00(6)	.7&RT	2	-	-	-	-	-	-	-	-	-	-	
TOTAL 00+10		24	3	8	4	0	7	2	15	2	4	42	

REPLACE NEW ON LT FOR BOTH PIPES

Addendum No. 02
 ID 8510-03-72
 Revised Sheet 21
 September 11, 2023

STATION	TO	STATION	LOCATION	TOFSOIL SY	625.0500	628.1504	628.1520	628.1905	628.1910	628.2008	628.7555	629.0210	630.0120	630.0140	630.0170	630.0500	
				SY	SALVAGED TOFSOIL SY	SILT FENCE LF	SILT FENCE MAINTENANCE LF	MOBILIZATIONS EROSION CONTROL EACH	MOBILIZATIONS EROSION CONTROL EACH	EROSION MAT CLASS TYPE B SY	CUIVER PIPE CHECKS EACH	FERTILIZER TYPE B CWT	SEEDING MIXTURE NO. 20 LB	SEEDING MIXTURE NO. 40 LB	SEEDING MIXTURE NO. 70 LB	SEED WATER MGAL	
61+58 (1)		52+29 (1)	PROJECT					3	3								
84+29 (1)		85+63 (1)	RT<		201	165	165			201	2	0.13					
97+04 (1)		98+25 (1)	RT<		232	125	125			332	2	0.15					
144+18 (1)		144+97 (1)	RT<		111	60	60			111	2	0.07					
130+15 (1)		130+56 (1)	RT<		117	120	120			117	2	0.07					
134+75 (1)		135+28 (1)	RT<		141	125	125			141	4	0.09					
148+38 (1)		148+67 (1)	RT<		83	90	90			83	2	0.05					
177+68 (1)		178+09 (1)	RT<		149	70	70			149	2	0.09					
213+37 (1)		213+98 (1)	RT<		201	165	165			201	2	0.13					
262+92 (1)		263+07 (1)	RT		35					35		0.02					
292+06 (2)		292+32 (2)	RT<		97					97		0.06					
299+08 (2)		299+33 (2)	RT<		92	50	60			92		0.06					
213+95 (2)		213+95 (2)	RT<		552	270	270			552	7	0.55					
82+12 (3)		82+12 (3)	RT<		92					92		0.06					
58+36 (3)		58+36 (3)	LT		45					45		0.03					
103+98 (3)		104+20 (3)	LT		18	60	60			18		0.01					
129+04 (3)		129+40 (3)	RT		45					45		0.03					
199+74 (3)		200+80 (3)	RT<		500					500	3	0.32					
205+86 (3)		206+23 (3)	RT		45					45		0.03					
231+78 (3)		232+02 (3)	LT		38	50	50			38		0.02					
303+18 (3)		304+37 (3)	RT<		44					44		0.03					
310+01 (3)		310+27 (3)	LT		22					22		0.01					
353+47 (3)		353+47 (3)	RT		45					45		0.03					
373+37 (3)		373+69 (3)	RT		22					22		0.01					
377+48 (3)		377+68 (3)	RT		22					22		0.01					
392+32 (3)		392+53 (3)	LT		22	40	40			22		0.01					
459+22 (3)		459+78 (3)	RT<		121					121		0.08					
9+03 (4)		9+08 (4)	RT<	20	15					15		0.01					
13+08 (4)		13+32 (4)	RT<		51					51		0.03					
41+92 (4)		42+36 (4)	RT<		95	40	40			95		0.06					
110+53 (4)		111+27 (4)	RT<		174					174		0.11					
231+71 (5)		232+59 (5)	RT<		187					187		0.12					
233+96 (5)		234+94 (5)	RT<		320	70	70			320		0.20					
245+98 (5)		247+40 (5)	RT<		450	200	200			450		0.29					
287+43 (5)		287+93 (5)	RT<		147					147		0.09					
295+47 (5)		296+13 (5)	RT<		176					176		0.11					
373+68 (6)		374+32 (6)	RT<		150	50	50			150		0.10					
			Wetland Areas														
			UNDISTRIBUTED	200													
			TOTAL 0010	220	4663	1640	1640	3	3	86	44	3.0	124	2	12.0		5.3

Addendum No. 02
ID 8510-03-72
Revised Sheet 22
September 11, 2023

LOCATION	DAY	TYPE	DAY	TYPE	DAY	TYPE	DAY	TYPE	DAY	TYPE	DAY	TYPE	REMARKS
PROJECT:													
CULVERT REPLACEMENTS	540												
ADVANCED WARNING		114		238		770		5					TRAFFIC CONTROL COVERING SIGNS TYPE 1 STAGE
UNDISTRIBUTED	75					50							
TOTAL 0010	615	0	238	0	1200	590	5	0	1.0				

MARKING LINE	STATION	TO	STATION	LOCATION	LF
646.1020 EPOXY 4-INCH	61475(1)	-	62435 (1)	RT & LT	165
	84+85 (1)	-	85+61 (1)	RT & LT	177
	97+09 (1)	-	98+31 (1)	RT & LT	282
	114+25 (1)	-	114+79 (1)	RT & LT	101
	130+22 (1)	-	130+64 (1)	RT & LT	96
	135+83 (1)	-	136+32 (1)	RT & LT	113
	148+56 (1)	-	148+96 (1)	RT & LT	93
	177+28 (1)	-	178+20 (1)	RT & LT	96
	213+39 (1)	-	214+01 (1)	RT & LT	148
	245+37 (1)	-	246+47 (1)	RT & LT	248
	198+77 (3)	-	200+77 (3)	RT & LT	200
	455+25 (3)	-	459+75 (3)	RT & LT	100
	13+08 (4)	-	13+52 (4)	RT & LT	176
	41+92 (4)	-	42+36 (4)	RT & LT	145
	110+53 (4)	-	111+27 (4)	RT & LT	173
	231+71 (5)	-	232+29 (5)	RT & LT	199
233+46 (5)	-	234+94 (5)	RT & LT	319	
245+48 (5)	-	247+02 (5)	RT & LT	337	
287+43 (5)	-	287+93 (5)	RT & LT	163	
295+47 (6)	-	296+13 (6)	RT & LT	157	
374+68 (6)	-	374+32 (6)	RT & LT	217	
TOTAL 0010					3453



Proposal Schedule of Items

Proposal ID: 20230912018 Project(s): 8510-03-72

Federal ID(s): N/A

SECTION: 0001

Contract Items

Alt Set ID:

Alt Mbr ID:

Proposal Line Number	Item ID Description	Approximate Quantity and Units	Unit Price	Bid Amount
0002	203.0100 Removing Small Pipe Culverts	19.000 EACH	_____.	_____.
0004	203.0220 Removing Structure (structure) 01. Station 315+92 (2)	1.000 EACH	_____.	_____.
0006	205.0100 Excavation Common	4,464.000 CY	_____.	_____.
0008	208.1500.S Temporary Lane Shift During Culvert Work	19.000 EACH	_____.	_____.
0010	209.2500 Backfill Granular Grade 2	500.000 TON	_____.	_____.
0012	213.0100 Finishing Roadway (project) 01. 8510- 03-72	1.000 EACH	_____.	_____.
0014	305.0110 Base Aggregate Dense 3/4-Inch	566.000 TON	_____.	_____.
0016	305.0120 Base Aggregate Dense 1 1/4-Inch	3,011.000 TON	_____.	_____.
0018	455.0605 Tack Coat	496.000 GAL	_____.	_____.
0020	465.0105 Asphaltic Surface	1,391.000 TON	_____.	_____.
0022	520.1024 Apron Endwalls for Culvert Pipe 24-Inch	24.000 EACH	_____.	_____.
0024	520.1030 Apron Endwalls for Culvert Pipe 30-Inch	3.000 EACH	_____.	_____.
0026	520.1036 Apron Endwalls for Culvert Pipe 36-Inch	8.000 EACH	_____.	_____.
0028	520.1048 Apron Endwalls for Culvert Pipe 48-Inch	4.000 EACH	_____.	_____.
0032	520.3424 Culvert Pipe Class III-A Non-metal 24- Inch	552.000 LF	_____.	_____.



Proposal Schedule of Items

Proposal ID: 20230912018 Project(s): 8510-03-72

Federal ID(s): N/A

SECTION: 0001

Contract Items

Alt Set ID:

Alt Mbr ID:

Proposal Line Number	Item ID Description	Approximate Quantity and Units	Unit Price	Bid Amount
0034	520.3436 Culvert Pipe Class III-A Non-metal 36-Inch	104.000 LF	_____.	_____.
0036	520.8700 Cleaning Culvert Pipes	7.000 EACH	_____.	_____.
0038	520.9700.S Culvert Pipe Liners (size) 01. 32 Inch	636.000 LF	_____.	_____.
0040	520.9750.S Cleaning Culvert Pipes for Liner Verification	3.000 EACH	_____.	_____.
0042	521.1228 Apron Endwalls for Pipe Arch Steel 28x20-Inch	2.000 EACH	_____.	_____.
0046	521.6728 Pipe Arch Corrugated Steel Aluminum Coated 28x20-Inch	64.000 LF	_____.	_____.
0048	522.0424 Culvert Pipe Reinforced Concrete Class IV 24-Inch	454.000 LF	_____.	_____.
0050	522.1024 Apron Endwalls for Culvert Pipe Reinforced Concrete 24-Inch	16.000 EACH	_____.	_____.
0052	522.2429 Culvert Pipe Reinforced Concrete Horizontal Elliptical Class HE-IV 29x45-Inch	50.000 LF	_____.	_____.
0054	522.2629 Apron Endwalls for Culvert Pipe Reinforced Concrete Horizontal Elliptical 29x45-Inch	2.000 EACH	_____.	_____.
0056	525.0336 Apron Endwalls for Culvert Pipe Aluminum 36-Inch	4.000 EACH	_____.	_____.
0058	606.0200 Riprap Medium	58.000 CY	_____.	_____.
0060	616.0700.S Fence Safety	325.000 LF	_____.	_____.



Proposal Schedule of Items

Proposal ID: 20230912018 Project(s): 8510-03-72

Federal ID(s): N/A

SECTION: 0001

Contract Items

Alt Set ID:

Alt Mbr ID:

Proposal Line Number	Item ID Description	Approximate Quantity and Units	Unit Price	Bid Amount
0062	618.0100 Maintenance And Repair of Haul Roads (project) 01. 8510-03-72	1.000 EACH	_____.	_____.
0064	619.1000 Mobilization	1.000 EACH	_____.	_____.
0066	624.0100 Water	452.000 MGAL	_____.	_____.
0068	625.0100 Topsoil	220.000 SY	_____.	_____.
0070	625.0500 Salvaged Topsoil	4,663.000 SY	_____.	_____.
0072	628.1504 Silt Fence	1,640.000 LF	_____.	_____.
0074	628.1520 Silt Fence Maintenance	1,640.000 LF	_____.	_____.
0076	628.1905 Mobilizations Erosion Control	3.000 EACH	_____.	_____.
0078	628.1910 Mobilizations Emergency Erosion Control	3.000 EACH	_____.	_____.
0080	628.2004 Erosion Mat Class I Type B	4,596.000 SY	_____.	_____.
0082	628.2008 Erosion Mat Urban Class I Type B	86.000 SY	_____.	_____.
0084	628.7555 Culvert Pipe Checks	44.000 EACH	_____.	_____.
0086	629.0210 Fertilizer Type B	3.000 CWT	_____.	_____.
0088	630.0120 Seeding Mixture No. 20	124.000 LB	_____.	_____.
0090	630.0140 Seeding Mixture No. 40	2.000 LB	_____.	_____.
0092	630.0170 Seeding Mixture No. 70	12.000 LB	_____.	_____.



Proposal Schedule of Items

Proposal ID: 20230912018 Project(s): 8510-03-72

Federal ID(s): N/A

SECTION: 0001

Contract Items

Alt Set ID:

Alt Mbr ID:

Proposal Line Number	Item ID Description	Approximate Quantity and Units	Unit Price	Bid Amount
0094	630.0500 Seed Water	5.300 MGAL	_____.	_____.
0096	633.5200 Markers Culvert End	42.000 EACH	_____.	_____.
0098	642.5001 Field Office Type B	1.000 EACH	_____.	_____.
0100	643.0300 Traffic Control Drums	615.000 DAY	_____.	_____.
0106	643.0900 Traffic Control Signs	590.000 DAY	_____.	_____.
0108	643.0910 Traffic Control Covering Signs Type I	5.000 EACH	_____.	_____.
0112	643.5000 Traffic Control	1.000 EACH	_____.	_____.
0114	645.0120 Geotextile Type HR	115.000 SY	_____.	_____.
0116	646.1020 Marking Line Epoxy 4-Inch	3,453.000 LF	_____.	_____.
0118	650.4500 Construction Staking Subgrade	1,408.000 LF	_____.	_____.
0120	650.5000 Construction Staking Base	1,408.000 LF	_____.	_____.
0122	650.6000 Construction Staking Pipe Culverts	20.000 EACH	_____.	_____.
0124	650.9911 Construction Staking Supplemental Control (project) 01. 8510-03-72	1.000 EACH	_____.	_____.
0126	690.0150 Sawing Asphalt	1,310.000 LF	_____.	_____.
0128	SPV.0060 Special 01. Grading and Shaping Pipe Ends	1.000 EACH	_____.	_____.
Section: 0001			Total:	_____.

Total Bid: _____.

