



Wisconsin Department of Transportation

September 1, 2023

Division of Transportation Systems Development

Bureau of Project Development
4822 Madison Yards Way, 4th Floor South
Madison, WI 53705

Telephone: (608) 266-1631
Facsimile (FAX): (608) 266-8459

NOTICE TO ALL CONTRACTORS:

Proposal #19: 1195-00-66
Solon Springs - Superior
Bayfield Road to STH 13
USH 2
Douglas County

Letting of September 12, 2023

This is Addendum No. 01, which provides for the following:

Plan Sheets:

Revised Plan Sheets	
Plan Sheet	Plan Sheet Title (brief description of changes to sheet)
6	Construction Details (Removed note from the Bevel Reinforcing Detail)
13	Miscellaneous Quantities (Moved culvert grouting quantity to station range)

Plan Sheets

The following 8½ x 11-inch sheets are attached and made part of the plans for this proposal:
Revised: 6 and 13.

The responsibility for notifying potential subcontractors and suppliers of these changes remains with the prime contractor.

Sincerely,

Mike Coleman

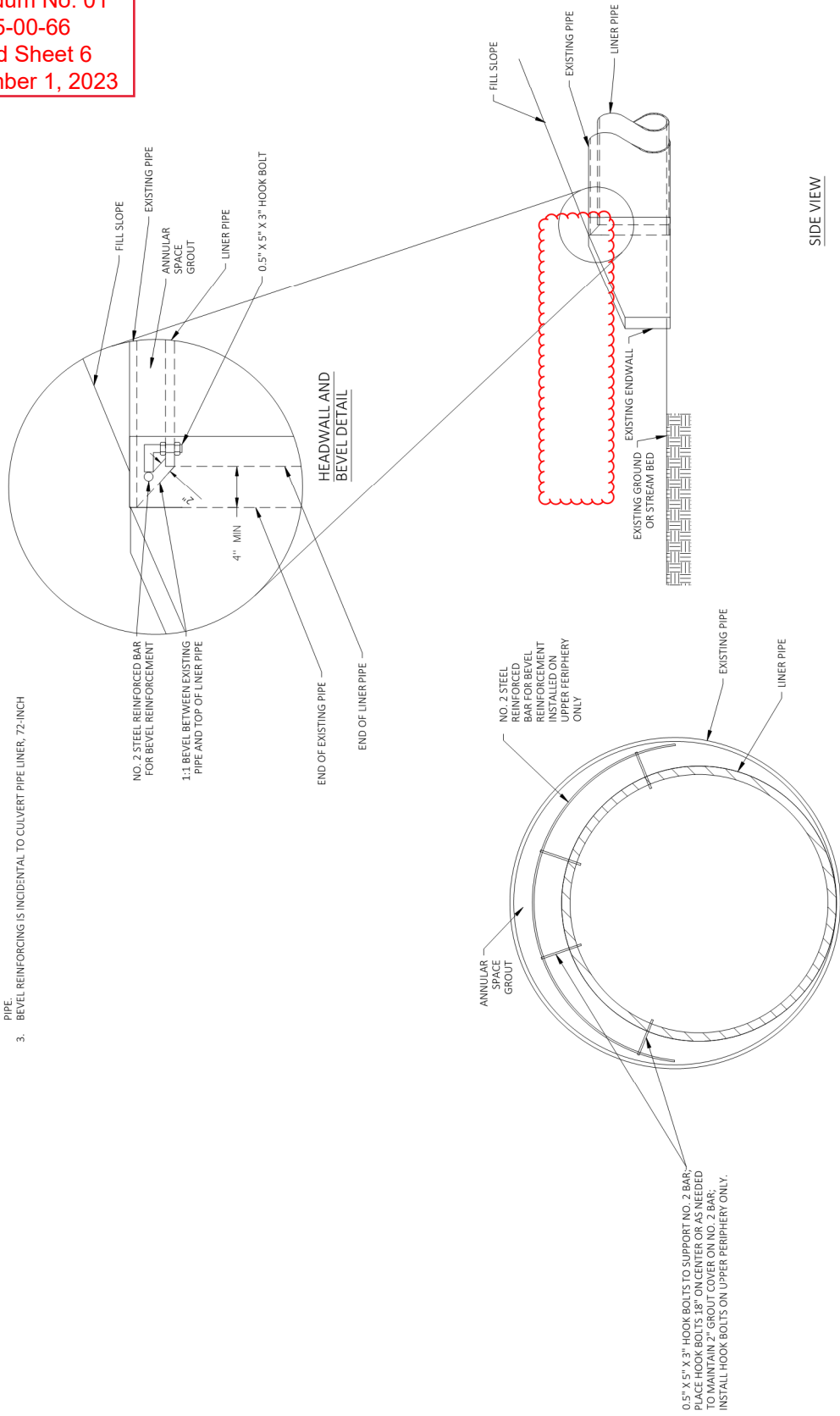
Proposal Development Specialist
Proposal Management Section

END OF ADDENDUM

Addendum No. 01
ID 1195-00-66
Revised Sheet 6
September 1, 2023

NOTES:

1. BEVEL REINFORCING REQUIRED ON THE INLET SIDE OF THE CULVERT PIPE LINER, 72-INCH AT STATION 401+39 WB, RT.
2. FORM BEVEL BETWEEN EXISTING PIPE AND LINER PIPE SUCH THAT THE BEVEL AT THE TOP OF PIPE IS 1:1. BOTTOM OF LINER PIPE TO BE INSTALLED ON INVERT OF EXISTING PIPE.
3. BEVEL REINFORCING IS INCIDENTAL TO CULVERT PIPE LINER, 72-INCH



0.5" X 5" X 3" HOOK BOLTS TO SUPPORT NO. 2 BAR;
PLACE HOOK BOLTS 18" ON CENTER OR AS NEEDED
TO MAINTAIN 2" GROUT COVER ON NO. 2 BAR.
INSTALL HOOK BOLTS ON UPPER PERIPHERY ONLY.

BEVEL REINFORCING DETAIL

PROJECT NO: 1195-00-66	HWY: USH 2	COUNTY: DOUGLAS	CONSTRUCTION DETAILS	SHEET 6	E
FILE NAME: X:\2320700\231843.01\TECH\CAD\XXXXXX\SHETS\021001-CD.DWG	LAYOUT NAME: 021001.cd	PLOT DATE: 8/30/2023 8:05 AM	PLOT BY: JASON ALEST	PLOT SCALE: 1 IN=10 FT	WISDOT\CAD\SS SHEET 42

Addendum No. 01
ID 1195-00-66
Revised Sheet 13
September 1, 2023

BACKFILL LOW STRENGTH

CATEGORY	STATION	LOCATION	RT	LT	TOTAL 0010
0010	368+21		12		12
		TOTAL 0010			12

CATEGORY	STATION	TO	STATION	LOCATION	RT	LT	TOTAL 0010
0010	368+00	-	369+00				1
				TOTAL 0010			1

CATEGORY	STATION	TO	STATION	LOCATION	RT	LT	TOTAL 0010
0010	368+00	-	369+00				1
				TOTAL 0010			1

CATEGORY	STATION	LOCATION	RT	LT	TOTAL 0000
0010	401+23			31	31
		TOTAL 0000			31

CLEARING

CATEGORY	STATION	TO	STATION	LOCATION	RT	LT	TOTAL 0010
0010	368+00	-	369+00				1
				TOTAL 0010			1

CATEGORY	STATION	TO	STATION	LOCATION	RT	LT	TOTAL 0010
0010	368+00	-	369+00				1
				TOTAL 0010			1

SELECT CRUSHED MATERIAL

CATEGORY	STATION	LOCATION	RT	LT	TOTAL 0000
0010	401+23			31	31
		TOTAL 0000			31

BACKFILL LOW STRENGTH

CATEGORY	STATION	LOCATION	RT	LT	TOTAL 0010
0010	368+21		12		12
		TOTAL 0010			12

CATEGORY	STATION	TO	STATION	LOCATION	RT	LT	TOTAL 0010
0010	368+00	-	369+00				1
				TOTAL 0010			1

CATEGORY	STATION	TO	STATION	LOCATION	RT	LT	TOTAL 0010
0010	368+00	-	369+00				1
				TOTAL 0010			1

SELECT CRUSHED MATERIAL

CATEGORY	STATION	LOCATION	RT	LT	TOTAL 0000
0010	401+23			31	31
		TOTAL 0000			31

FENCING

CATEGORY	STATION	TO	STATION	LOCATION	RT	LT	TOTAL 0010
0010	401+09	-	401+69		60	60	120
				TOTAL 0010			120

FENCING

CATEGORY	STATION	TO	STATION	LOCATION	RT	LT	TOTAL 0010
0010	368+00	-	369+00		60	60	120
				TOTAL 0010			120

FENCING

CATEGORY	STATION	TO	STATION	LOCATION	RT	LT	TOTAL 0010
0010	368+00	-	369+00		60	60	120
				TOTAL 0010			120

FENCING

CATEGORY	STATION	TO	STATION	LOCATION	RT	LT	TOTAL 0010
0010	368+00	-	369+00		60	60	120
				TOTAL 0010			120

EARTHWORK

DIVISION	FROM/TO STATION	LOCATION	COMMON EXCAVATION (1)		EXPANDED FILL (13) FACTOR	MASS ORDNATE +/- (14)	208-1100 SELECT BORROW
			EBS EXCAVATION (3)	UNE/EXPANDED FILL			
USH 2-WB	400+00 - 403+00	LT	0	90	113	113	113
GRAND TOTAL	TOTAL COMMON EXC		0				113

NOTES:
 (1) COMMON EXCAVATION IS THE SUM OF THE CUT AND EBS EXCAVATION COLUMNS. ITEM NUMBER 205.0100
 (3) EBS EXCAVATION TO BE BACKFILLED WITH SELECT BORROW MATERIAL. NOTE: THIS IS DESIGNERS CHOICE. CAN BE BACKFILLED WITH BORROW, OR CUT AS WELL.
 (13) EXPANDED FILL FACTOR = 1.25
 (14) THE MASS ORDNATE + OR - QTY CALCULATED FOR THE DIVISION. PLUS QUANTITY INDICATES AN EXCESS OF MATERIAL WITHIN THE DIVISION. MINUS INDICATES A SHORTAGE OF MATERIAL WITHIN THE DIVISION.

CULVERT LINERS

CATEGORY	STATION	TO	STATION	LOCATION	RT	LT	TOTAL 0010
0010	368+21	-	368+23		1	139	140
0010	401+23	-	401+56		1	123	124
				TOTAL 0010			264

CULVERT LINERS

CATEGORY	STATION	TO	STATION	LOCATION	RT	LT	TOTAL 0010
0010	368+00	-	369+00		1	139	140
				TOTAL 0010			140

CULVERT LINERS

CATEGORY	STATION	TO	STATION	LOCATION	RT	LT	TOTAL 0010
0010	368+00	-	369+00		1	139	140
				TOTAL 0010			140

CULVERT LINERS

CATEGORY	STATION	TO	STATION	LOCATION	RT	LT	TOTAL 0010
0010	368+00	-	369+00		1	139	140
				TOTAL 0010			140

MISCELLANEOUS QUANTITIES

CATEGORY	STATION	TO	STATION	LOCATION	RT	LT	TOTAL 0010
0010	368+21	-	368+23		1	139	140
0010	401+23	-	401+56		1	123	124
				TOTAL 0010			264

MISCELLANEOUS QUANTITIES

CATEGORY	STATION	TO	STATION	LOCATION	RT	LT	TOTAL 0010
0010	368+00	-	369+00		1	139	140
				TOTAL 0010			140

MISCELLANEOUS QUANTITIES

CATEGORY	STATION	TO	STATION	LOCATION	RT	LT	TOTAL 0010
0010	368+00	-	369+00		1	139	140
				TOTAL 0010			140

MISCELLANEOUS QUANTITIES

CATEGORY	STATION	TO	STATION	LOCATION	RT	LT	TOTAL 0010
0010	401+23					1	1
				TOTAL 0010			1

MISCELLANEOUS QUANTITIES

CATEGORY	STATION	TO	STATION	LOCATION	RT	LT	TOTAL 0010
0010	401+23					1	1
				TOTAL 0010			1

MISCELLANEOUS QUANTITIES

CATEGORY	STATION	TO	STATION	LOCATION	RT	LT	TOTAL 0010
0010	401+23					1	1
				TOTAL 0010			1

MISCELLANEOUS QUANTITIES

CATEGORY	STATION	TO	STATION	LOCATION	RT	LT	TOTAL 0010
0010	401+23					1	1
				TOTAL 0010			1

