



# Wisconsin Department of Transportation

October 31, 2023

## Division of Transportation Systems Development

Bureau of Project Development  
4822 Madison Yards Way, 4<sup>th</sup> Floor South  
Madison, WI 53705

Telephone: (608) 266-1631  
Facsimile (FAX): (608) 266-8459

### NOTICE TO ALL CONTRACTORS:

**Proposal #28: 1170-19-72, WISC 2024036**  
**Minocqua - Manitowish**  
**Manitou Park to Minocqua Lk Bridge**  
**USH 51**  
**Oneida County**

### Letting of November 14, 2023

This is Addendum No. 01, which provides for the following:

#### Plan Sheets:

Revised Plan Sheets	
Plan Sheet	Plan Sheet Title (brief description of why sheet was added)
6	Typical Sections (Clarified that the grade varies in a particular area)
13	Intersection Details (Revised grades to promote drainage)
17	Curb Ramp Details (Revised grades to promote drainage)
184-185, 205	Cross Sections (Revised grades to promote drainage)

Added Plan Sheets	
Plan Sheet	Plan Sheet Title (brief description of why sheet was added)
13A – 13C	Paving Details (added for clarity of curb and gutter layout in field)

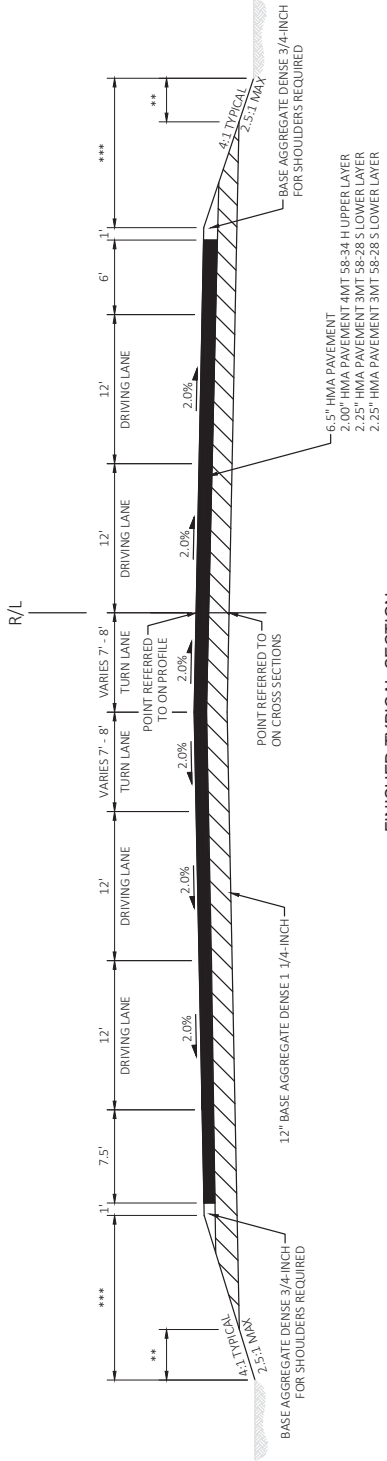
The responsibility for notifying potential subcontractors and suppliers of these changes remains with the prime contractor.

Sincerely,

*Mike Coleman*

Proposal Development Specialist  
Proposal Management Section

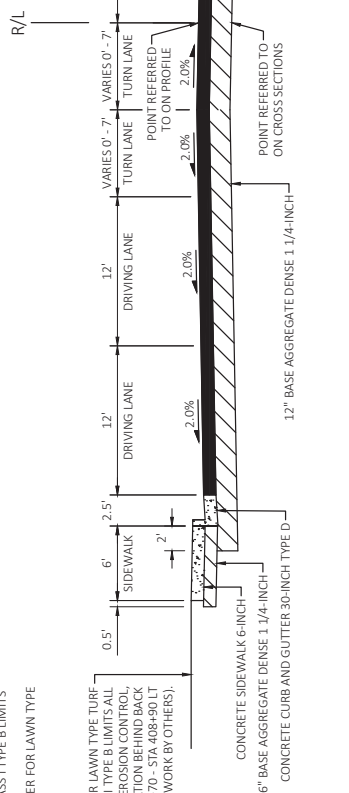
END OF ADDENDUM



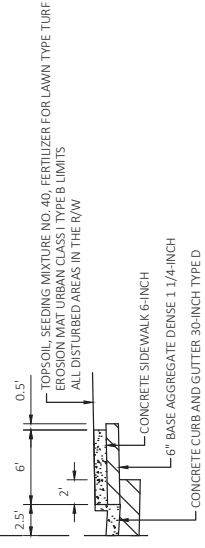
**FINISHED TYPICAL SECTION**  
STA 402+00 - STA 404+03

- \* VARIES 1.7% - 2.0% STA 407+00 - STA 411+50
- \*\* TOPSOIL AND EROSION MAT URBAN CLASS TYPE B LIMITS
- \*\*\* SEEDING MIXTURE FOR LAWN TYPE TURF LIMITS

TOPSOIL, SEEDING MIXTURE NO. 40, FERTILIZER FOR LAWN TYPE TURF - EROSION MAT URBAN CLASS TYPE B LIMITS ALL DISTURBED AREAS IN THE R/W (EROSION CONTROL, GRADING, SHAPING AND RESTORATION BEHIND BACK OF SIDEWALK BETWEEN STA 404+70 - STA 408+90 LT WORK BY OTHERS).



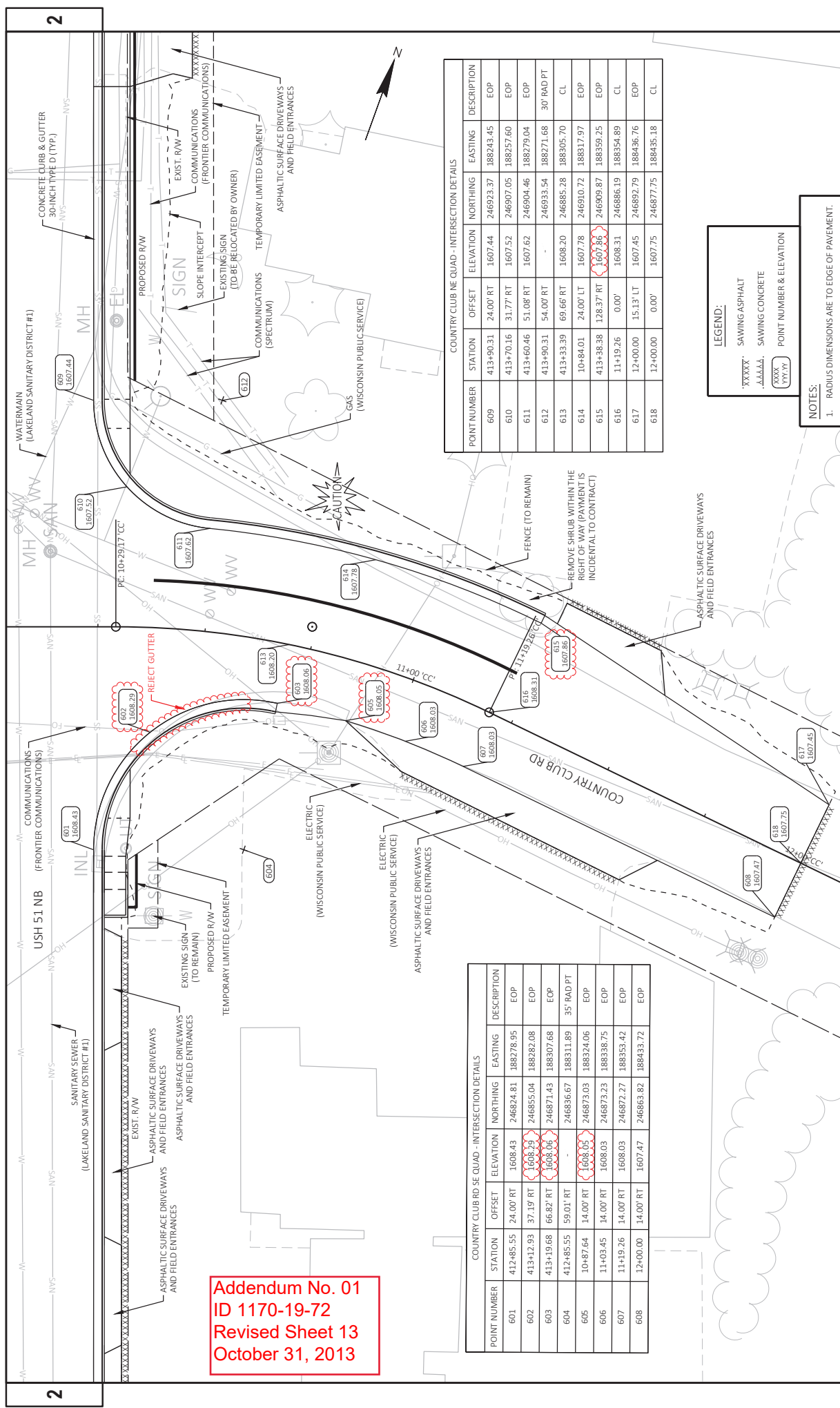
**FINISHED TYPICAL SECTION**  
STA 404+03 - STA 414+08



**PARTIAL FINISHED TYPICAL SECTION**  
STA 412+70 - STA 414+08

Addendum No. 01  
ID 1170-19-72  
Revised Sheet 6  
October 31, 2013

<b>PROJECT NO:</b> 1170-19-72	<b>COUNTY:</b> ONEIDA	<b>TYPICAL SECTIONS</b>	<b>SHEET</b> 6
<small>FILE NAME: G:\00\0093\000937\1\CADD\SHETS\PLAN\020301_TSDWG</small>	<small>HWY:</small> USH 51	<small>FLYBY:</small> SHAWN DOLENS	<small>1 IN.=30 FT.</small>
<small>DATE: 10/27/2013 7:22 AM</small>	<small>PLT DATE:</small>	<small>PLT NAME:</small>	<small>1 IN.=30 FT.</small>
<small>DATE: 10/27/2013 7:22 AM</small>	<small>PLT DATE:</small>	<small>PLT NAME:</small>	<small>1 IN.=30 FT.</small>



Addendum No. 01  
 ID 1170-19-72  
 Revised Sheet 13  
 October 31, 2013

COUNTRY CLUB NE QUAD - INTERSECTION DETAILS

POINT NUMBER	STATION	OFFSET	ELEVATION	NORTHING	EASTING	DESCRIPTION
609	413+90.31	24.00' RT	1607.44	246923.37	188243.45	EOP
610	413+70.16	31.77' RT	1607.52	246907.05	188257.60	EOP
611	413+60.46	51.08' RT	1607.62	246904.46	188279.04	EOP
612	413+90.31	54.00' RT	-	246933.54	188271.68	30' RAD PT
613	413+33.39	69.66' RT	1608.20	246885.28	188305.70	CL
614	10+84.01	24.00' LT	1607.78	246910.72	188317.97	EOP
615	413+38.38	128.37' RT	1607.86	246909.87	188359.25	EOP
616	11+19.26	0.00'	1608.31	246886.19	188354.89	CL
617	12+00.00	15.13' LT	1607.45	246892.79	188436.76	EOP
618	12+00.00	0.00'	1607.75	246877.75	188435.18	CL

COUNTRY CLUB RD SE QUAD - INTERSECTION DETAILS

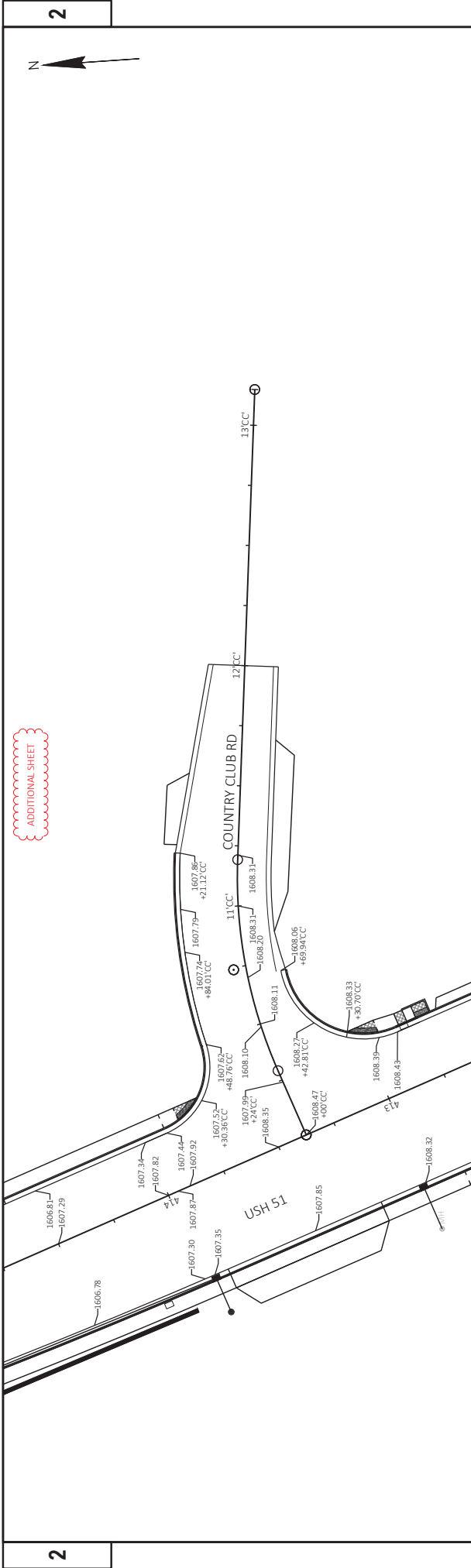
POINT NUMBER	STATION	OFFSET	ELEVATION	NORTHING	EASTING	DESCRIPTION
601	412+85.55	24.00' RT	1608.43	246824.81	188278.95	EOP
602	413+12.93	37.19' RT	1608.29	246855.04	188282.08	EOP
603	413+19.68	66.82' RT	1608.06	246871.43	188307.68	EOP
604	412+85.55	59.01' RT	1608.05	246856.67	188311.89	35' RAD PT
605	10+87.64	14.00' RT	1608.03	246873.03	188324.06	EOP
606	11+03.45	14.00' RT	1608.03	246873.23	188338.75	EOP
607	11+19.26	14.00' RT	1608.03	246872.27	188353.42	EOP
608	12+00.00	14.00' RT	1607.47	246863.82	188433.72	EOP

**LEGEND:**  
 XXXXX SAWING ASPHALT  
 A.A.A.A.A. SAWING CONCRETE  
 (XXX YY.YY) POINT NUMBER & ELEVATION

**NOTES:**  
 1. RADIUS DIMENSIONS ARE TO EDGE OF PAVEMENT.







Addendum No. 01  
 ID 1170-19-72  
 Added Sheet 13C  
 October 31, 2013

THIS SPACE INTENTIONALLY LEFT BLANK

PROJECT NO:	1170-19-72	HWY: USH 51	COUNTY: ONEIDA	PAVING DETAILS	SHEET 13C	E
FILE NAME:	G:\000093\00093711\CADD\01\02\03\PLAN\021401-D.DWG					
LAYOUT NAME:	-03					
PLOT DATE:	10/27/2013 8:01 AM					
PLOT BY:	SHAWN DOLENS					
PLOT NAME:	1 IN=40 FT					
PLOT SCALE:	1 IN=40 FT					
WISDOT/CADD/SHEET 144						

COUNTRY CLUB RD SE						
POINT NUMBER	STATION	OFFSET	ELEVATION	NORTHING	EASTING	DESCRIPTION
401	412+92.92	27.35' RT	1608.57	246832.87	188279.60	BOC
402	412+84.03	26.50' RT	1608.61	246824.23	188281.81	BOC
403	412+80.29	26.50' RT	1608.63	246820.71	188283.08	BOC
404	412+76.29	26.50' RT	1608.43	246816.94	188284.44	BOC
405	412+70.29	26.50' RT	1608.47	246811.30	188286.47	BOC
406	412+70.29	31.48' RT	1608.54	246812.99	188291.15	EDW
408	412+76.30	31.48' RT	1608.50	246818.63	188289.12	EDW
409	412+80.31	31.47' RT	1608.71	246822.41	188287.75	EDW
410	412+84.03	31.47' RT	1608.69	246825.91	188286.49	EDW
411	412+92.92	32.50' RT	1608.40	246834.62	188284.45	EDW
412	413+04.37	32.50' RT	1608.26	246845.39	188280.57	BOC
413	413+07.48	35.01' RT	1608.73	246849.17	188281.88	BOC
414	413+18.03	60.37' RT	1608.52	246867.68	188302.17	BOC
415	413+17.23	66.32' RT	1608.00	246868.95	188308.03	BOC

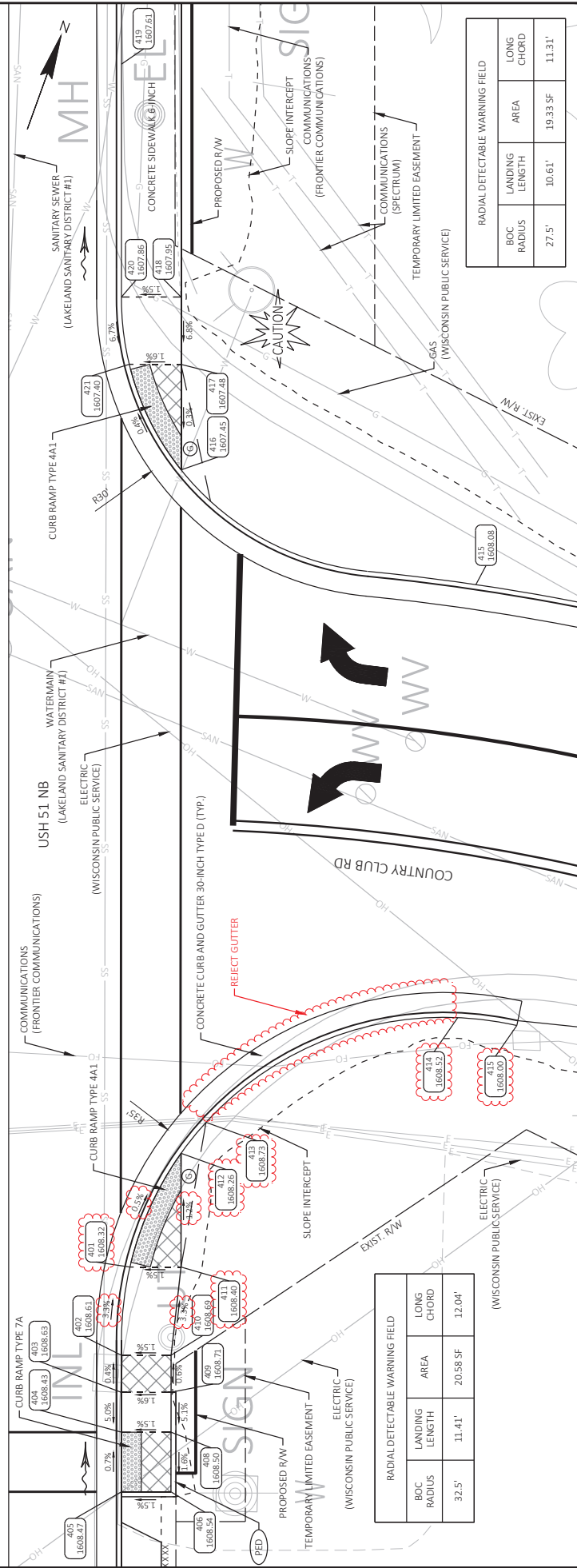
COUNTRY CLUB RD NE						
POINT NUMBER	STATION	OFFSET	ELEVATION	NORTHING	EASTING	DESCRIPTION
415	413+61.61	62.20' RT	1608.08	246909.31	188289.12	BOC
416	413+73.16	32.50' RT	1607.45	246910.12	188257.27	BOC
417	413+83.77	32.50' RT	1607.48	246920.10	188253.67	EDW
418	413+90.56	32.50' RT	1607.95	246926.49	188251.37	EDW
419	413+94.00	26.50' RT	1607.61	246946.51	188237.76	EDW
420	413+90.56	26.50' RT	1607.86	246924.45	188245.72	BOC
421	413+83.78	27.29' RT	1607.40	246918.34	188248.76	BOC

- NOTES:**
- CONTRACTOR TO FIELD VERIFY ELEVATION GRADES, SLOPES, LENGTHS AND MATCH POINTS, PRIOR TO CURB RAMP AND SIDEWALK CONSTRUCTION.
  - THE ENGINEER MAY ADJUST ELEVATIONS TO FIT FIELD CONDITIONS.
  - DASHED LINES SHOWN FOR PROPOSED SIDEWALK ARE FOR INFORMATION ONLY AND DO NOT INDICATE SEE THE STANDARD DETAIL DRAWINGS FOR COMPLETE CURB RAMP REQUIREMENTS.

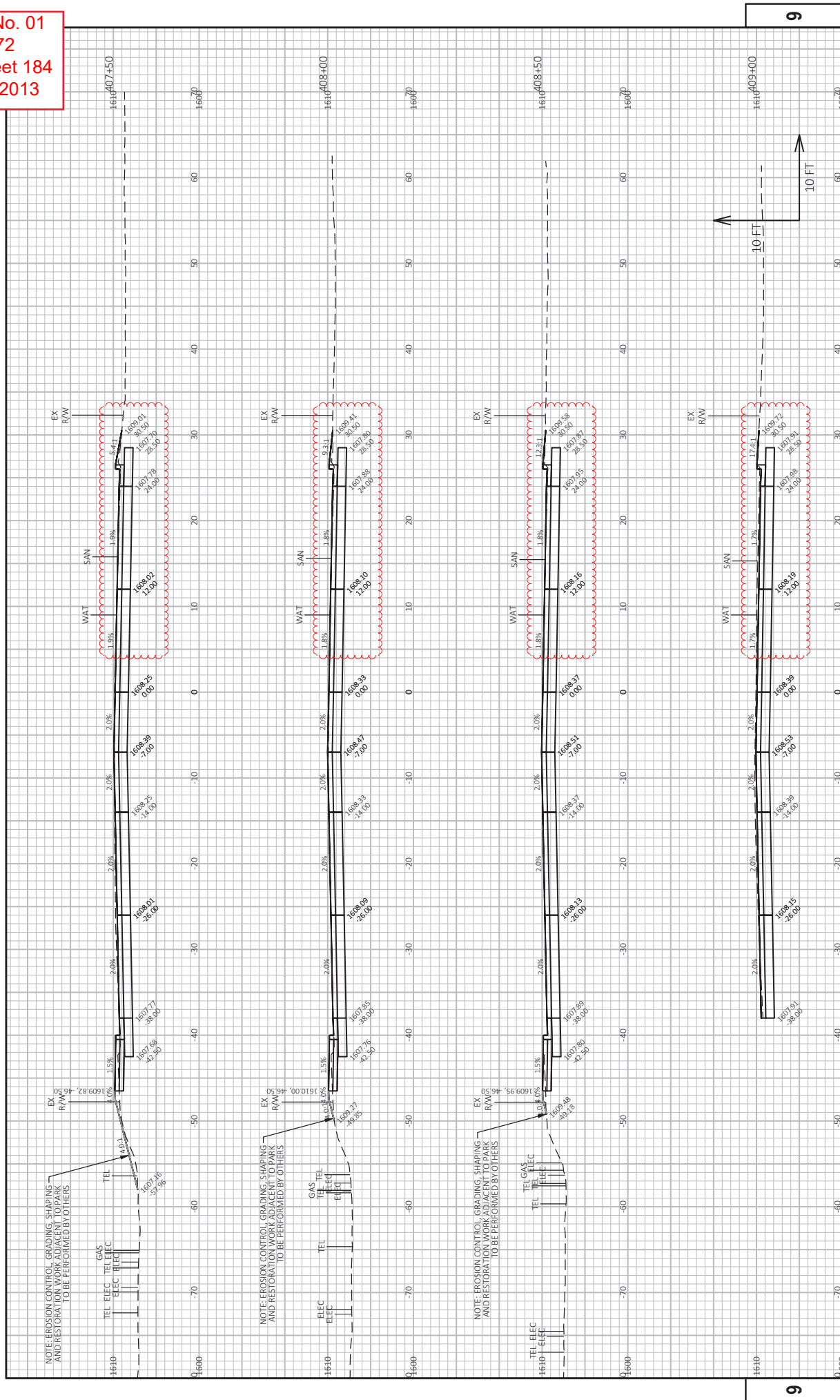
**LEGEND:**

- DETECTABLE WARNING FIELD
- LANDING AREA
- 6:1 GRADED FLARE
- 10:1 CONCRETE FLARE
- CONCRETE CURB PEDESTRIAN
- POINT NUMBER & ELEVATION

**Addendum No. 01**  
**ID 1170-19-72**  
**Revised Sheet 17**  
**October 31, 2013**



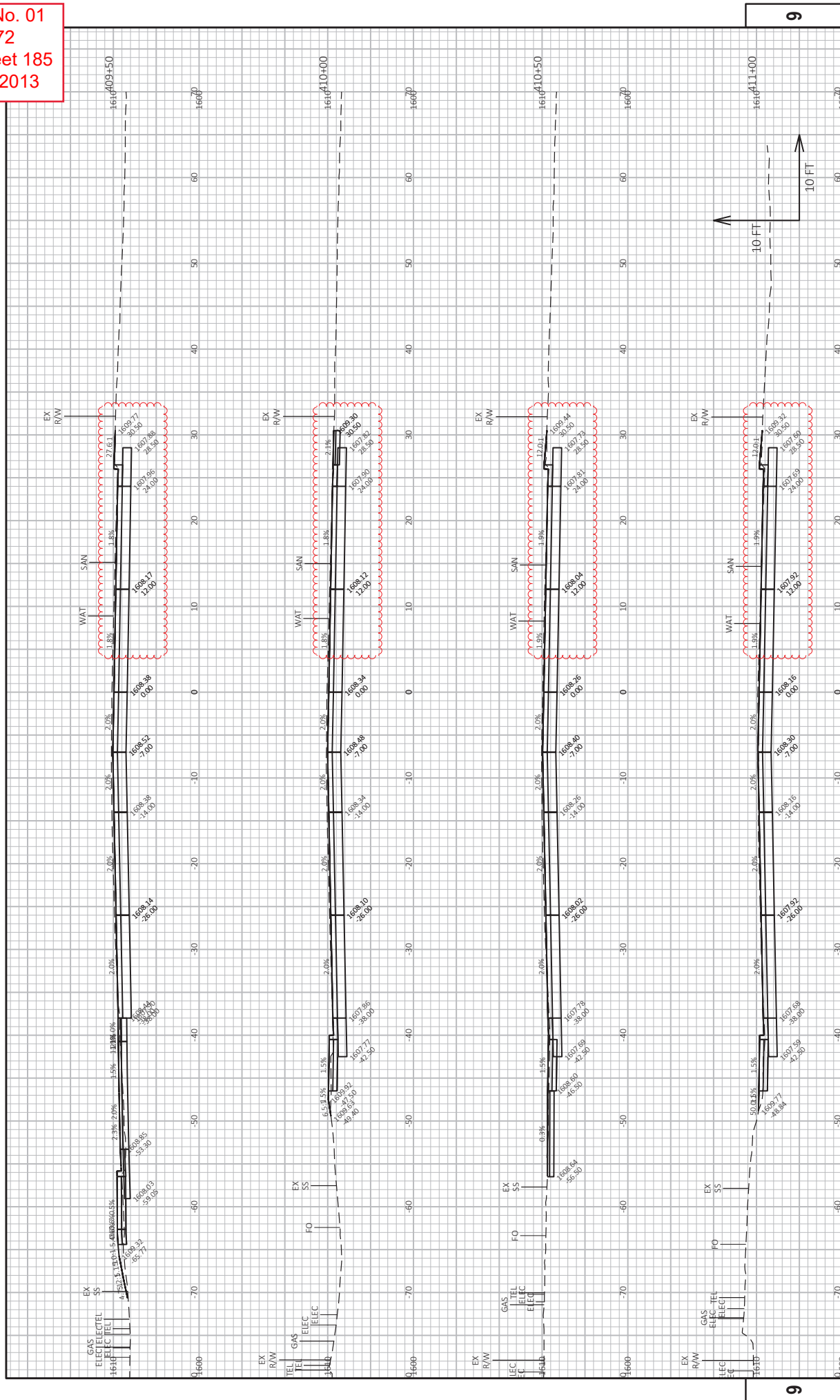
Addendum No. 01  
 ID 1170-19-72  
 Revised Sheet 184  
 October 31, 2013



PROJECT NO: 1170-19-72  
 HWY: USH 51  
 COUNTY: ONEIDA  
 CROSS SECTIONS: USH 51  
 FLOT BY: SHAWN DOLENS  
 PLOT DATE: 10/27/2013 8:14 AM  
 PLOT NAME:  
 SHEET 184  
 E



Addendum No. 01  
 ID 1170-19-72  
 Revised Sheet 185  
 October 31, 2013



PROJECT NO: 1170-19-72 HWY: USH 51 COUNTY: ONEIDA CROSS SECTIONS: USH 51 SHEET 185 E

FILE NAME: G:\00\0093\009371\CADD\SHETS\PLAN\09201-X.DWG PLOT DATE: 10/27/2013 8:14 AM PLOT NAME: SHAWN DOLENS

LAYOUT NAME: 05 PLOT SCALE: 1 IN=10 FT HORZ. / 1 IN=10 FT VERT. WISDOT/CADD/SHEET 49

