



# Wisconsin Department of Transportation

## Division of Transportation Systems Development

Bureau of Project Development  
4822 Madison Yards Way, 4<sup>th</sup> Floor South  
Madison, WI 53705

November 6, 2023

Telephone: (608) 266-1631  
Facsimile (FAX): (608) 266-8459

### NOTICE TO ALL CONTRACTORS:

**Proposal #37: 7170-00-76, WISC 2024038**  
**Wabasha – Durand**  
**STH 35 North to Pleasant Ridge Rd**  
**STH 25**  
**Buffalo & Pepin County**

### Letting of Letting Date

This is Addendum No. 01, which provides for the following:

### Special Provisions:

Added Special Provisions	
Article No.	Description
23	Grading, Shaping and Finishing Culvert Pipes and Apron Endwalls, Item SPV.0060.04

### Schedule of Items:

Revised Bid Item Quantities					
Bid Item	Item Description	Unit	Proposal Total Prior to Addendum	Proposal Quantity Change (-)	Proposal Total After Addendum
203.0100	Removing Small Culvert Pipes	EACH	10	1	11
204.0115	Removing Asphaltic Surface Butt Joints	SY	2,910	5,807	8,717
465.0120	Asphaltic Surface Driveways and Field Entrances	TON	965	417	1,382

Added Bid Item Quantities					
Bid Item	Item Description	Unit	Proposal Total Prior to Addendum	Quantity Added	Proposal Total After Addendum
520.8000	Concrete Collars for Pipe	EACH	0	1	1

522.2319	Culvert Pipe Reinforced Concrete Horizontal Elliptical Class HE-III 19x30-Inch	LF	0	10	10
522.2619	Apron Endwalls for Culvert Pipe Reinforced Concrete Horizontal Elliptical 19x30-Inch	EACH	0	1	1
524.0148	Culvert Pipe Salvaged 48-Inch	LF	0	17	17
SPV.0060.04	Grading, Shaping and Finishing Culvert Pipes and Apron Endwalls	EACH	0	3	3

**Plan Sheets:**

<b>Revised Plan Sheets</b>	
Plan Sheet	Plan Sheet Title (brief description of changes to sheet)
6	CONSTRUCTION DETAILS (Updated Butt Joint Detail for Milled Asphaltic Pavements (Profile Change) to current version)
7	CONSTRUCTION DETAILS (Updated details to reflect changes in previous page)
42	MISCELLANEOUS QUANTITIES (Quantities updated for item 204.0115 Removing Asphaltic Surface Butt Joints; Updated Removing Small Culvert Pipes quantity in the Removing Small Culvert Pipes table)
44	MISCELLANEOUS QUANTITIES (Quantities updated for item 465.0120 Asphaltic Surface Driveways and Field Entrances)
46	MISCELLANEOUS QUANTITIES (Removed table with added columns that no longer fit on sheet)
65	PLAN – BUFFALO COUNTY (Added item descriptions to culvert requiring pipe section reattachment)
66	PLAN – BUFFALO COUNTY (Added item descriptions to culvert requiring pipe section reattachment)
67	PLAN – BUFFALO COUNTY (Added item descriptions to culvert requiring partial replacement and cleaning)

<b>Added Plan Sheets</b>	
Plan Sheet	Plan Sheet Title (brief description of why sheet was added)
42A	MISCELLANEOUS QUANTITIES (Sheet added to continue updated quantities)
44A	MISCELLANEOUS QUANTITIES (Sheet added to continue updated quantities)
46A	MISCELLANEOUS QUANTITIES (Moved from sheet 46, added columns for new items to Miscellaneous Culvert Pipes table)
88A	SDD 8F2-1 (Sheet added for the addition of an elliptical pipe item)

The responsibility for notifying potential subcontractors and suppliers of these changes remains with the prime contractor.

Sincerely,

*Mike Coleman*

Proposal Development Specialist  
Proposal Management Section

**ADDENDUM NO. 01**

**7170-00-76**

**November 6, 2023**

**Special Provisions**

**23. Grading, Shaping and Finishing Culvert Pipes and Apron Endwalls, Item SPV.0060.04.**

**A Description**

Grade, Shape and Finish Culvert Pipes and Apron Endwall outside of the shoulder point as the plans show and as follows.

**B Materials**

Furnish materials conforming to the following:

Common excavation and material disposal.....	205.2
Borrow .....	208.2
Topsoil .....	625.2
Mulch .....	627.2
Erosion mat.....	628.2
Fertilizer .....	629.2
Seeding.....	630.2
Seed Watering.....	630.2

**C Construction**

Grade, shape and finish embankments slopes for apron endwalls and culvert pipes at the locations the plan show. Construct as plans show and engineer directs conforming to the following:

Common excavation and material disposal.....	205.3
Borrow .....	208.3
Topsoil .....	625.3
Mulch .....	627.3
Erosion mat.....	628.3
Fertilizer .....	629.3
Seeding.....	630.3
Seed Watering.....	630.3

**D Measurement**

The department will measure Grading, Shaping and Finishing Endwalls as a unit for each endwall or culvert end acceptably completed.

**E Payment**

The department will pay for measured quantities at the contract unit price under the following bid item:

ITEM NUMBER	DESCRIPTION	UNIT
SPV.0060.04	Grading, Shaping and Finishing Endwalls	EACH

Payment is full compensation for all borrow, topsoil, erosion mat, mulch, fertilizer, seeding, and seed watering when culvert pipes and endwalls are outside of the contract grading limits. If the work specified above falls within the contract grading limits, the department will pay separately for that work under the excavation, borrow, topsoil, erosion mat, mulch, fertilizer and seeding bid items.

**Schedule of Items**

Attached, dated November 6, 2023, are the revised Schedule of Items Pages 1 – 7.

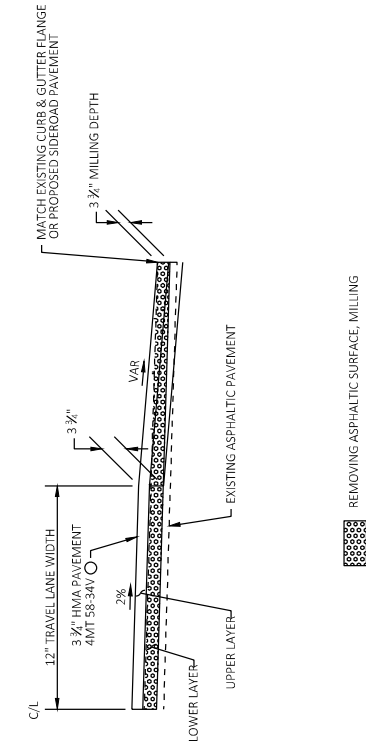
**Plan Sheets**

The following 8½ x 11-inch sheets are attached and made part of the plans for this proposal:

Revised: 6, 7, 42, 44, 46, 65, 66, and 67.

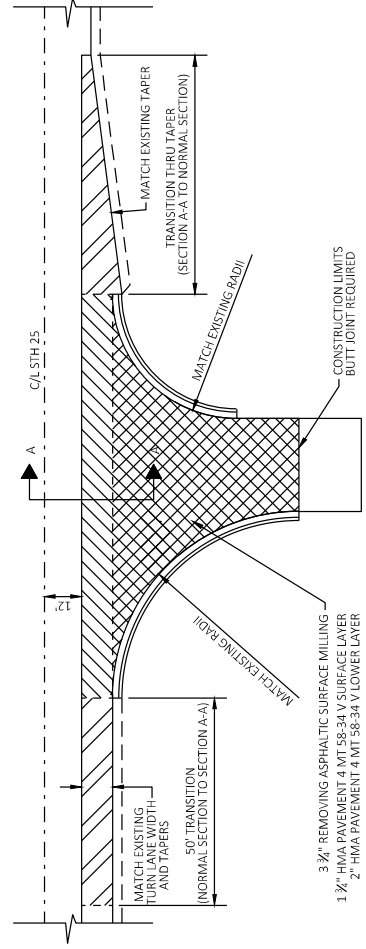
Added: 42A, 44A, 46A, and 88A.

END OF ADDENDUM



 REMOVING ASPHALTIC SURFACE, MILLING  
 SEE TYPICAL SECTIONS FOR PAVEMENT TYPE AND THICKNESS OF INDIVIDUAL LAYERS

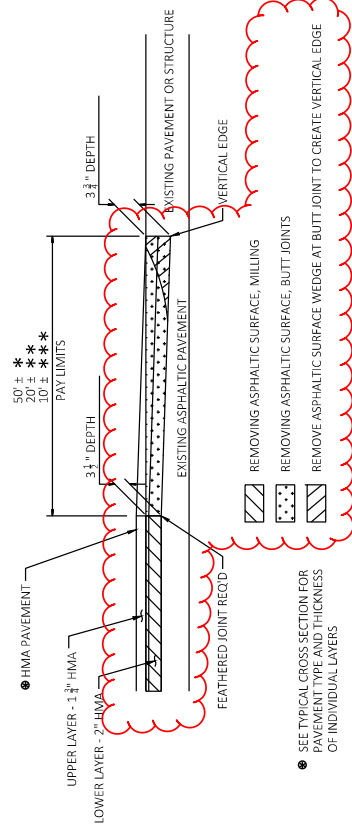
SECTION A-A



PLAN VIEW

TYPICAL SIDE ROAD DETAIL

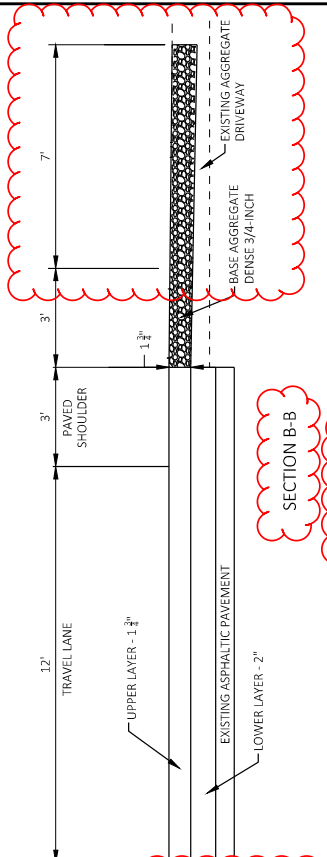
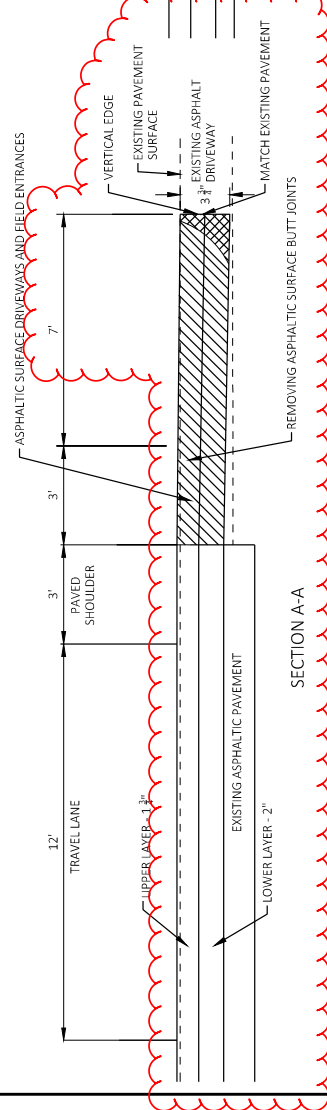
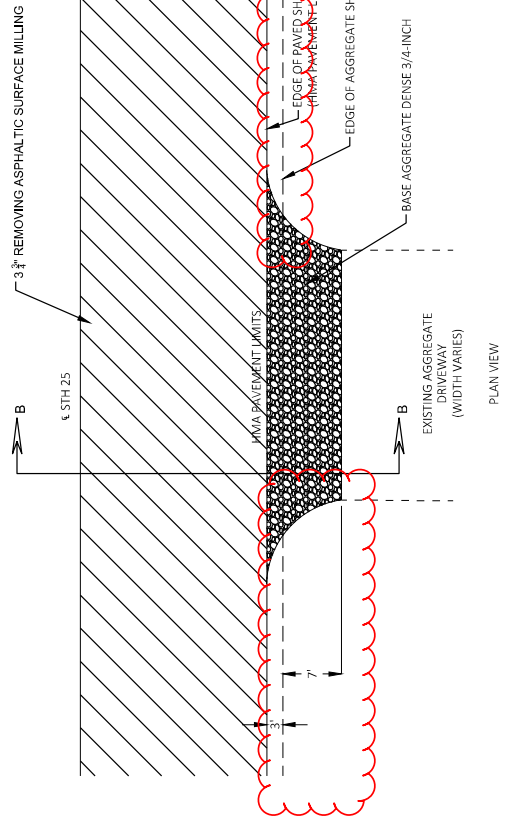
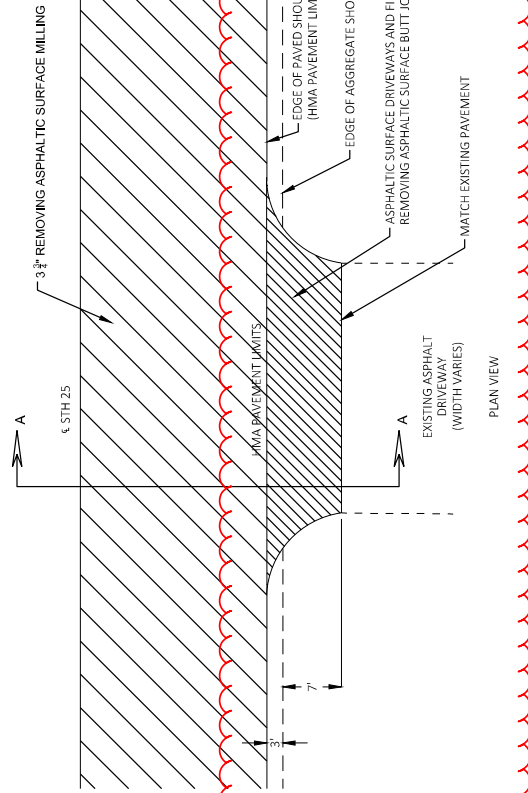
Addendum No. 01  
 ID 7170-00-76  
 Revised Sheet 6  
 November 6, 2023



 REMOVING ASPHALTIC SURFACE, MILLING  
 SEE TYPICAL CROSS SECTION FOR PAVEMENT TYPE AND THICKNESS OF INDIVIDUAL LAYERS

\* MAINLINE  
 \*\* SIDEROADS  
 \*\*\* PRIVATE ENTRANCES

BUTT JOINT DETAIL FOR MILLED ASPHALTIC PAVEMENTS (PROFILE CHANGE)



NOTE: MATCH EXISTING DRIVEWAY SURFACE AND WIDTH  
RURAL DRIVEWAY DETAIL

Addendum No. 01  
ID 7170-00-76  
Revised Sheet 7  
November 6, 2023

PROJECT NO: 7170-00-76	COUNTY: BUFFALO	CONSTRUCTION DETAILS	SHEET 7	E
FILE NAME: W:\71700076\CDS\SHETS\PLAN\021002-CD.DWG	HWY: STH 25	PLOT BY: COTTON HPPLE		
LAYOUT NAME: 021002-08		PLOT DATE: 10/31/2023 5:06 PM		

REMOVING SMALL CULVERT PIPES

203.0100	203.0220	205.0100	208.1500.S	TRANSITION LIMITS	REMARKS
REMOVING SMALL CULVERT PIPES	REMOVING STRUCTURE (60-INCH CULVERT)	EXCAVATION COMMON	TEMPORARY LANE SHIFT DURING CULVERT WORK		
CATEGORY	STATION	LOCATION	TO	FROM	
0010	260+97	STH 25	1	150	50' SOUTH
0010	261+00	STH 25	1	142	50' NORTH
0010	272+54	STH 25	1	165	24" CMCP
0010	272+58	STH 25	1	163	24" CMCP
0010	275+33	STH 25	1	152	24" CMCP
0010	275+36	STH 25	1	-	24" CMCP
0010	275+40	STH 25	1	157	24" CMCP
0010	432+81	STH 25	1	327	60" CMCP
0010	433+69	STH 25	1	327	60" CMCP
0010	584+49	STH 25	1	-	18" CMCP
0010	878+70	STH 25	1	422	50' SOUTH-50' NORTH
0010	881+38	STH 25	1	368	50' SOUTH-50' NORTH
		TOTAL 0010	11	2,373	12

PREPARE FOUNDATION FOR ASPHALTIC SHOULDERS

CATEGORY	STATION	TO	STATION	LOCATION	SYA
0010	623+37	-	625+26	STH 25 LT	2
0010	696+33	-	698+92	STH 25 RT	3
0010	761+20	-	770+24	STH 25 LT	10
0010	780+76	-	786+88	STH 25 LT	7
0010	835+01	-	840+74	STH 25 LT	6
			TOTAL 0010		28

FINISHING ROADWAY

CATEGORY	STATION	TO	STATION	LOCATION	SYA
0010	200+83	-	910+95	STH 25	1
			TOTAL 0010		1

Addendum No. 01  
 ID 7170-00-76  
 Revised Sheet 42  
 November 6, 2023

GRUBBING

201.0205	204.0220	204.0185	204.0120	REMARKS
GRUBBING	REMOVING INLETS	REMOVING MASONRY	REMOVING ASPHALTIC SURFACE	
CATEGORY	STATION	LOCATION	TO	FROM
0010	880+92	883+26	LT	3
		TOTAL 0010		3
			RT	10
		TOTAL 0010		20

REMOVING ASPHALTIC SURFACE

CATEGORY	STATION	TO	STATION	LOCATION	SY	REMARKS
0010	200+83	-	201+43	STH 25	410	MAINLINE
0010	200+83	-	315+80	STH 25	42,400	DRIVEWAY
0010	225+87	-	226+33	STH 25 RT	39	DRIVEWAY
0010	226+63	-	226+77	STH 25 RT	18	DRIVEWAY
0010	240+03	-	240+48	STH 25 LT	44	DRIVEWAY
0010	240+54	-	242+47	STH 25 RT	590	DRIVEWAY
0010	240+84	-	242+76	STH 25 LT	277	DRIVEWAY
0010	250+48	-	251+00	STH 25 LT	49	DRIVEWAY
0010	299+30	-	301+05	STH 25 RT	171	DRIVEWAY
0010	311+92	-	314+81	STH 25 RT	421	DRIVEWAY
0010	312+83	-	313+33	STH 25 LT	63	DRIVEWAY
0010	315+30	-	315+80	STH 25	199	DRIVEWAY
0010	316+33	-	316+83	STH 25	201	DRIVEWAY
0010	316+33	-	445+86	STH 25	45,300	DRIVEWAY
0010	333+99	-	336+42	STH 25 LT	39	DRIVEWAY
0010	338+26	-	338+57	STH 25 LT	21	DRIVEWAY
0010	351+80	-	352+28	STH 25 LT	43	DRIVEWAY
0010	361+75	-	362+12	STH 25 RT	28	DRIVEWAY
0010	439+38	-	440+83	STH 25 RT	539	DRIVEWAY
0010	445+35	-	445+87	STH 25	175	DRIVEWAY
0010	447+64	-	448+14	STH 25	178	DRIVEWAY
0010	447+64	-	699+85	STH 25	88,900	DRIVEWAY
0010	449+71	-	451+47	STH 25 LT	322	DRIVEWAY
0010	450+64	-	451+47	STH 25	3	DRIVEWAY
0010	471+05	-	471+40	STH 25 RT	29	DRIVEWAY
0010	473+07	-	474+27	STH 35 RT	434	DRIVEWAY
0010	513+21	-	513+57	STH 25 LT	27	DRIVEWAY
0010	513+86	-	515+17	STH 25 RT	379	DRIVEWAY
0010	522+07	-	522+33	STH 25 RT	19	DRIVEWAY
0010	523+69	-	524+01	STH 25 RT	25	DRIVEWAY
			SUBTOTAL 0010		4,740	

PROJECT NO: 7170-00-76

HWY: STH 25

COUNTY: BUFFALO & PEPIN

MISCELLANEOUS QUANTITIES

PLANT NAME:

PLOT SCALE: 1:1

SHEET: 42

Addendum No. 01  
ID 7170-00-76  
Revised Sheet 42A  
November 6, 2023

REMOVING ASPHALTIC SURFACE (CONTINUED)

CATEGORY	STATION	TO	STATION	LOCATION	204-0110		204-0115		204-0120		REMARKS
					REMOVING ASPHALTIC SURFACE	SY	REMOVING ASPHALTIC SURFACE BUTT JOINTS	SY	REMOVING ASPHALTIC SURFACE MILLING	SY	
0010	540+27	-	540+57	STH 25 LT	-	-	24	-	-	-	DRIVEWAY
0010	543+68	-	544+00	STH 25 RT	-	-	28	-	-	-	DRIVEWAY
0010	561+71	-	562+24	STH 25 RT	-	-	49	-	-	-	DRIVEWAY
0010	562+91	-	563+33	STH 25 LT	-	-	37	-	-	-	DRIVEWAY
0010	565+17	-	565+57	STH 25 RT	-	-	34	-	-	-	DRIVEWAY
0010	565+28	-	565+64	STH 25 LT	-	-	28	-	-	-	DRIVEWAY
0010	566+70	-	567+24	STH 25 LT	-	-	45	-	-	-	DRIVEWAY
0010	567+36	-	567+44	STH 25 RT	-	-	9	-	-	-	DRIVEWAY
0010	575+91	-	576+54	STH 25 LT	-	-	53	-	-	-	DRIVEWAY
0010	590+13	-	590+80	STH 25 LT	-	-	60	-	-	-	DRIVEWAY
0010	605+73	-	607+35	STH 25 LT	-	-	209	-	-	-	SIDEROAD
0010	611+26	-	611+66	STH 25 LT	-	-	32	-	-	-	DRIVEWAY
0010	612+89	-	613+35	STH 25 LT	-	-	35	-	-	-	DRIVEWAY
0010	614+03	-	614+27	STH 25 LT	-	-	17	-	-	-	DRIVEWAY
0010	616+07	-	616+50	STH 25 LT	-	-	33	-	-	-	DRIVEWAY
0010	622+81	-	623+43	STH 25	6	-	-	-	-	-	BEAMGUARD EXTENSIONS
0010	631+90	-	634+01	STH 25 RT	-	-	209	-	-	-	SIDEROAD
0010	644+86	-	645+29	STH 25 RT	-	-	37	-	-	-	DRIVEWAY
0010	653+44	-	653+75	STH 25 RT	-	-	22	-	-	-	DRIVEWAY
0010	655+59	-	655+83	STH 25 RT	-	-	17	-	-	-	DRIVEWAY
0010	657+15	-	657+41	STH 25 RT	-	-	18	-	-	-	DRIVEWAY
0010	663+64	-	664+15	STH 25 RT	-	-	42	-	-	-	DRIVEWAY
0010	665+13	-	665+73	STH 25 RT	-	-	56	-	-	-	DRIVEWAY
0010	684+36	-	686+59	STH 25 LT	-	-	399	-	-	-	SIDEROAD
0010	688+35	-	690+56	STH 25 RT	-	-	273	-	-	-	SIDEROAD
0010	698+82	-	699+40	STH 25	7	-	-	-	-	-	BEAMGUARD EXTENSIONS
0010	699+36	-	699+86	STH 25	-	-	203	-	-	-	MAINLINE
0010	700+65	-	701+15	STH 25	-	-	203	-	-	-	MAINLINE
0010	700+65	-	910+95	STH 25	-	-	-	-	75,800	-	DRIVEWAY
0010	703+77	-	704+10	STH 25 LT	-	-	33	-	-	-	DRIVEWAY
0010	707+82	-	708+07	STH 25 LT	-	-	19	-	-	-	DRIVEWAY
0010	713+01	-	713+62	STH 25 LT	-	-	53	-	-	-	DRIVEWAY
0010	724+17	-	724+73	STH 25	6	-	-	-	-	-	BEAMGUARD EXTENSIONS
0010	729+42	-	730+08	STH 25 RT	-	-	57	-	-	-	DRIVEWAY
0010	739+76	-	740+05	STH 25 LT	-	-	23	-	-	-	DRIVEWAY
0010	741+07	-	741+57	STH 25 LT	-	-	42	-	-	-	DRIVEWAY
0010	756+09	-	757+37	STH 25 RT	-	-	297	-	-	-	SIDEROAD
0010	770+24	-	770+82	STH 25	6	-	-	-	-	-	BEAMGUARD EXTENSIONS
0010	778+85	-	779+11	STH 25 RT	-	-	21	-	-	-	DRIVEWAY
0010	780+16	-	780+76	STH 25	10	-	-	-	-	-	BEAMGUARD EXTENSIONS
0010	786+88	-	787+50	STH 25	9	-	-	-	-	-	BEAMGUARD EXTENSIONS
0010	807+16	-	808+29	STH 25 RT	-	-	434	-	-	-	SIDEROAD
0010	821+02	-	821+43	STH 25 RT	-	-	32	-	-	-	DRIVEWAY
0010	832+45	-	832+93	STH 25 RT	-	-	34	-	-	-	DRIVEWAY
0010	837+23	-	837+62	STH 25 RT	-	-	29	-	-	-	DRIVEWAY
0010	838+02	-	840+20	STH 25 RT	-	-	401	-	-	-	SIDEROAD
0010	840+74	-	841+28	STH 25	6	-	-	-	-	-	BEAMGUARD EXTENSIONS
0010	846+44	-	847+04	STH 25	9	-	-	-	-	-	BEAMGUARD EXTENSIONS
0010	850+79	-	851+38	STH 25	9	-	-	-	-	-	BEAMGUARD EXTENSIONS
0010	858+98	-	859+58	STH 25	9	-	-	-	-	-	BEAMGUARD EXTENSIONS
0010	863+01	-	863+56	STH 25 LT	-	-	45	-	-	-	DRIVEWAY
0010	864+26	-	864+97	STH 25	12	-	-	-	-	-	BEAMGUARD EXTENSIONS
0010	870+03	-	870+79	STH 25	12	-	-	-	-	-	BEAMGUARD EXTENSIONS
0010	878+14	-	878+82	STH 25	9	-	-	-	-	-	BEAMGUARD EXTENSIONS
0010	894+55	-	895+16	STH 25 LT	-	-	58	-	-	-	DRIVEWAY
0010	908+78	-	909+26	STH 25 RT	-	-	40	-	-	-	SIDEROAD
0010	910+44	-	910+95	STH 25	-	-	187	-	-	-	MAINLINE
SHEET 1 SUBTOTAL 0010					3	-	4,740	-	-	-	176,600
SUBTOTAL 0010					110	-	3,977	-	-	-	75,800
TOTAL 0010					113	-	8,717	-	-	-	252,400



CATEGORY	STATION	TO	STATION	LOCATION	TACK COAT GAL	455.0605	450.4000	460.6644	465.0105	465.0110	465.0120	465.0310	465.0315	HMA ITEMS		REMARKS		
														455.0605	450.4000		460.6644	465.0105
						TON	TON	TON	TON	TON	TON	LF	SY					
0010	200+83	-	315+80	STH 25	5,940		2,328	9,310										
0010	225+87	-	226+33	STH 25 RT							9							
0010	236+53	-	236+77	STH 25 RT						4								
0010	240+03	-	240+48	STH 25 LT						10								
0010	240+54	-	242+47	STH 25 RT						124								
0010	240+84	-	242+76	STH 25 LT						59								
0010	250+48	-	251+00	STH 25 LT						11						CULVERT REPLACEMENT		
0010	260+47	-	261+55	STH 25					16							CULVERT REPLACEMENT		
0010	267+55	-	277+63	STH 25					16							CULVERT REPLACEMENT		
0010	270+28	-	280+45	STH 25					19									
0010	299+30	-	301+05	STH 25 RT						36								
0010	311+92	-	314+81	STH 25 RT						89								
0010	312+83	-	313+33	STH 25 LT						14								
0010	316+33	-	445+86	STH 25	6,340		2,490	9,960										
0010	335+99	-	336+42	STH 25 LT						9								
0010	338+26	-	338+57	STH 25 LT						5								
0010	351+80	-	352+28	STH 25 LT						10								
0010	361+75	-	362+12	STH 25 RT						6								
0010	424+27	-	424+27	STH 25 LT												CULVERT REPLACEMENT		
0010	432+76	-	432+86	STH 25					16							CULVERT REPLACEMENT		
0010	433+61	-	433+71	STH 25														
0010	439+38	-	440+83	STH 25 RT					16									
0010	447+64	-	699+85	STH 25	12,440		4,888	19,550			114							
0010	449+71	-	451+47	STH 25 LT						68								
0010	451+97	-	458+59	STH 25 LT							662							
0010	453+74	-	458+18	STH 25 RT							444							
0010	456+35	-	456+35	STH 25 LT												6		
0010	456+51	-	456+51	STH 25 RT												6		
0010	471+05	-	471+40	STH 25 RT						7								
0010	473+07	-	474+27	STH 25 RT						92								
0010	513+21	-	513+57	STH 25 LT						6								
0010	513+86	-	515+17	STH 25 RT						80								
0010	522+07	-	522+33	STH 25 RT						4								
0010	523+69	-	524+01	STH 25 RT						6								
0010	540+27	-	540+57	STH 25 LT						6								
0010	543+68	-	544+00	STH 25 RT						6								
0010	561+71	-	562+24	STH 25 RT						11								
0010	562+91	-	563+33	STH 25 LT						8								
0010	563+17	-	563+57	STH 25 RT						8								
0010	565+28	-	565+64	STH 25 LT						6								
0010	566+56	-	567+81	STH 25 RT						89								
0010	566+70	-	567+24	STH 25 LT						10								
0010	575+91	-	576+54	STH 25 LT						12								
0010	590+13	-	590+80	STH 25 LT						13								
0010	605+73	-	607+35	STH 25 LT						44								
0010	611+26	-	611+66	STH 25 LT						7								
0010	612+89	-	613+35	STH 25 LT						8								
0010	614+03	-	614+27	STH 25 LT						4								
0010	616+07	-	616+50	STH 25 LT						7								
0010	620+64	-	620+64	STH 25 LT												6		
SUBTOTAL 0010					24,720		9,706	38,820	81	0	1,002	1,106		24				
PROJECT NO: 7170-00-76													COUNTY: BUFFALO & PEPIN		MISCELLANEOUS QUANTITIES		SHEET: 44	
HWY: STH 25																	PLOT NAME:	
FILE NAME: N:\PDS\...030200_mq.ppk																	PLOT SCALE: 1:1	

Addendum No. 01  
ID 7170-00-76  
Revised Sheet 44A  
November 6, 2023

HMA ITEMS (CONTINUED)

CATEGORY	STATION	TO	STATION	LOCATION	TACK COAT GAL	455.0605	450.4000	460.6644	465.0105	465.0110	465.0120	465.0310	465.0315	REMARKS
						WMA COLD WEATHER PAVING	HMA PAVEMENT 4 MI 58-34 V	ASPHALTIC SURFACE	ASPHALTIC SURFACE PATCHING	ASPHALTIC DRIVEWAYS AND FIELD ENTRANCES	ASPHALTIC CURB	ASPHALTIC FLUMES		
						TON	TON	TON	TON	TON	LF	SY		
0010	620+68	-	620+68	STH 25 RT	-	-	-	-	-	-	-	6	-	
0010	620+69	-	622+81	STH 25 LT	-	-	-	-	-	-	212	-	-	
0010	620+71	-	622+47	STH 25 RT	-	-	-	-	-	-	177	-	-	
0010	631+90	-	634+01	STH 25 RT	-	-	-	-	-	-	-	-	-	
0010	644+86	-	645+29	STH 25 RT	-	-	-	-	-	-	-	-	-	
0010	653+44	-	653+75	STH 25 RT	-	-	-	-	-	-	-	-	-	
0010	655+59	-	655+83	STH 25 RT	-	-	-	-	-	4	-	-	-	
0010	657+15	-	657+41	STH 25 RT	-	-	-	-	-	4	-	-	-	
0010	663+64	-	664+15	STH 25 RT	-	-	-	-	-	9	-	-	-	
0010	665+13	-	665+73	STH 25 RT	-	-	-	-	-	12	-	-	-	
0010	668+63	-	668+63	STH 25 LT	-	-	-	-	-	-	124	-	-	
0010	668+67	-	669+91	STH 25 LT	-	-	-	-	-	-	-	6	-	
0010	669+95	-	669+95	STH 25 LT	-	-	-	-	-	-	-	-	6	
0010	684+36	-	686+59	STH 25 LT	-	-	-	-	-	84	-	-	-	
0010	689+35	-	690+56	STH 25 RT	-	-	-	-	-	58	-	-	-	
0010	700+65	-	910+95	STH 25	10,610	4,165	16,660	-	-	-	-	-	-	
0010	703+77	-	704+10	STH 25 LT	-	-	-	-	-	7	-	-	-	
0010	707+82	-	708+07	STH 25 LT	-	-	-	-	-	4	-	-	-	
0010	713+01	-	713+62	STH 25 LT	-	-	-	-	-	12	-	-	-	
0010	729+42	-	730+08	STH 25 RT	-	-	-	-	-	12	-	-	-	
0010	739+76	-	740+05	STH 25 LT	-	-	-	-	-	5	-	-	-	
0010	741+07	-	741+57	STH 25 LT	-	-	-	-	-	9	-	-	-	
0010	756+09	-	757+37	STH 25 RT	-	-	-	-	-	63	-	-	-	
0010	778+85	-	779+11	STH 25 RT	-	-	-	-	-	5	-	-	-	
0010	807+16	-	808+29	STH 25 RT	-	-	-	-	-	92	-	-	-	
0010	841+28	-	846+43	STH 25 LT	-	-	-	-	-	-	515	-	-	
0010	843+39	-	843+39	STH 25 LT	-	-	-	-	-	-	-	6	-	
0010	864+97	-	870+09	STH 25 LT	-	-	-	-	-	-	512	-	-	
0010	866+37	-	866+37	STH 25 LT	-	-	-	-	-	-	-	6	-	
0010	878+06	-	879+34	STH 25	-	-	-	11	-	-	-	-	-	
0010	880+74	-	882+02	STH 25	-	-	-	11	-	-	-	-	-	
0010	200+83	-	910+95	PROJECT	-	-	-	-	200	-	-	-	-	
0010	200+83	-	910+95	PROJECT	-	-	-	-	100	-	-	-	-	
SHEET SUBTOTAL 0010					24,720	9,706	38,820	81	0	1,002	1,106	24		
SUBTOTAL 0010					10,610	4,165	16,660	22	300	380	1,540	30		
TOTAL 0010					35,330	13,871	55,480	103	300	1,382	2,646	54		

MATERIAL TRANSFER VEHICLE

CATEGORY	STATION	TO	STATION	LOCATION
460.9000.5				
MATERIAL TRANSFER VEHICLE (PROJECT) (01. 7170-00-76)				
				EACH
0010	200+83	-	910+95	STH 25
				TOTAL 0010
				1
				1

MISCELLANEOUS QUANTITIES

CATEGORY	STATION	TO	STATION	LOCATION

PROJECT NO: 7170-00-76

HWY: STH 25

COUNTY: BUFFALO & PEPIN

MISCELLANEOUS QUANTITIES

SHEET: 44A

FILE NAME : N:\PDS\...030200\_mq.ppk

PLOT DATE : October 27, 2023

PLOT BY : A.R.H.

PLOT NAME :

PLOT SCALE : 1:1

Addendum No. 01  
ID 7170-00-76  
Revised Sheet 46  
November 6, 2023

MOVED CLEANING  
CULVERT PIPES  
TO SHEET 46A

RUMBLESTRIPS

CATEGORY	STATION	TO	STATION	LOCATION	465.0520		465.0560	
					ASPHALTIC	ASPHALTIC	RUMBLE STRIPS,	RUMBLE STRIPS,
					SHOULDER	CENTERLINE		
					LF	LF		
0010	200+83	-	241+44	5TH 25 L/R	8,122	-	-	-
0010	201+33	-	315+80	5TH 25	-	11,447	-	-
0010	316+33	-	445+86	5TH 25	-	12,953	-	-
0010	447+64	-	699+85	5TH 25	-	25,221	-	-
0010	700+65	-	910+95	5TH 25	-	21,030	-	-
0010	839+00	-	910+95	5TH 25 L/R	14,390	-	-	-
				TOTAL 0010	22,512	70,651		

CULVERT PIPE REINFORCED CONCRETE ITEMS

CATEGORY	STATION	LOCATION	DISCHARGE END			APRON END WALLS FOR CULVERT PIPE 24-INCH EACH	CULVERT PIPE REINFORCED CONCRETE CLASS IV 24-INCH LF	REINFORCED CONCRETE CLASS IV 36-INCH LF	CULVERT PIPE REINFORCED CONCRETE CLASS IV 60-INCH LF	APRON END WALLS FOR CULVERT PIPE REINFORCED CONCRETE 60-INCH EACH
			STA	OFFSET	ELEV					
0010	260+96	5TH 25	260+97	17.3' RT	735.21	260+94	18.5' LT	734.72	36	-
0010	261+00	5TH 25	261+01	17.1' RT	735.21	260+99	18.8' LT	734.72	36	-
0010	272+53	5TH 25	272+64	18.3' RT	740.25	272+41	20.2' LT	739.53	45	-
0010	272+58	5TH 25	272+70	18.4' RT	740.72	272+46	20.1' LT	740.31	45	-
0010	275+31	5TH 25	275+26	19.8' RT	740.25	275+37	19.9' LT	739.53	41	-
0010	275+36	5TH 25	275+31	19.8' RT	740.72	275+41	19.9' LT	740.31	41	-
0010	275+41	5TH 25	275+35	19.8' RT	740.50	275+46	20.0' LT	740.13	41	-
0010	432+82	5TH 25	432+83	23.5' RT	690.58	432+79	22.2' LT	687.61	46	2
0010	433+67	5TH 25	433+67	23.7' RT	688.35	433+66	22.0' LT	687.34	46	2
0010	878+68	5TH 25	878+61	27.5' RT	749.70	878+78	25.9' LT	742.53	56	-
0010	881+39	5TH 25	881+63	26.6' RT	742.90	881+12	26.6' LT	739.75	73	-
				TOTAL 0010		14	2	285	129	92

NOTES

- 1) STATION, OFF SETS, AND ELEVATIONS SHOWN ARE TO THE END OF THE PIPE OR EDGE OF STRUCTURE, NOT THE APRON END OF END WALLS.
- 2) JOINTS FOR THE CONCRETE PIPE SHALL BE PROVIDED AND INSTALLED AT THE APRON END WALLS AND ALL PIPE JOINTS. THE COST OF THESE TIES SHALL BE INCIDENTAL TO THE COST OF THE PIPE.

INLET ITEMS

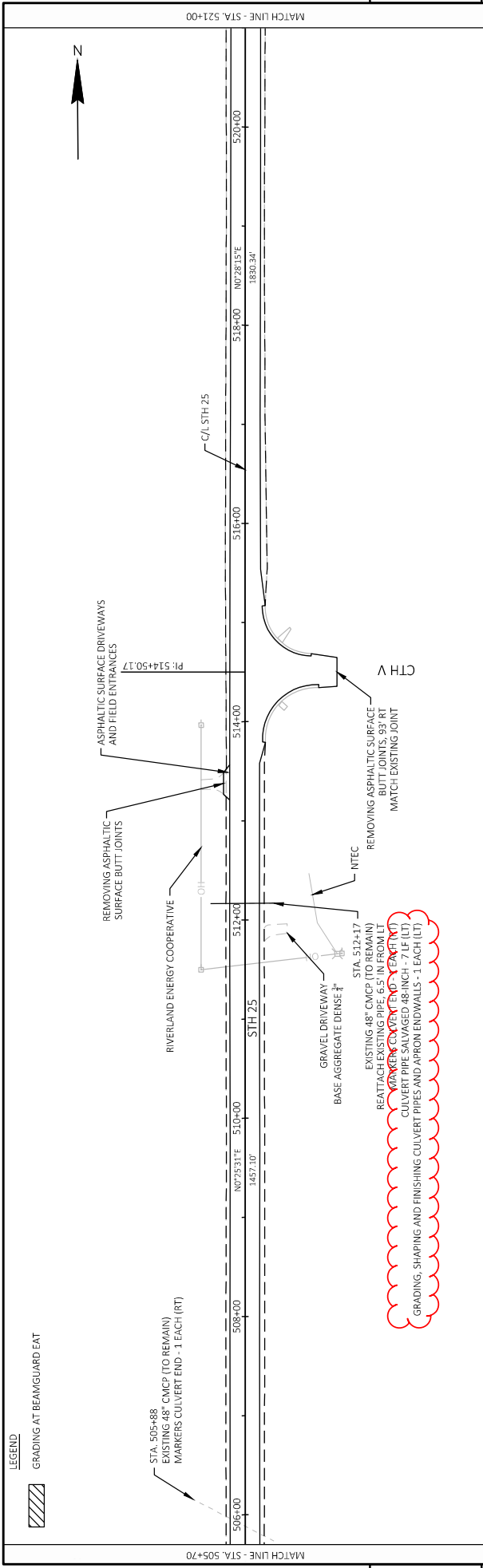
CATEGORY	STATION	LOCATION	RIM ELEV	INVERT ELEV	611.0642		COMMENTS
					INLET COVERS	INLET'S MEDIAN	
					TYPE MS	2 GRATE	
					EACH	EACH	
0010	878+61	27.5' RT	753.70	749.70	2	1	2 SLOPE INLET
0010	881+63	26.6' RT	746.90	742.90	2	1	2 SLOPE INLET
					4	2	
					TOTAL 0010		

NOTES

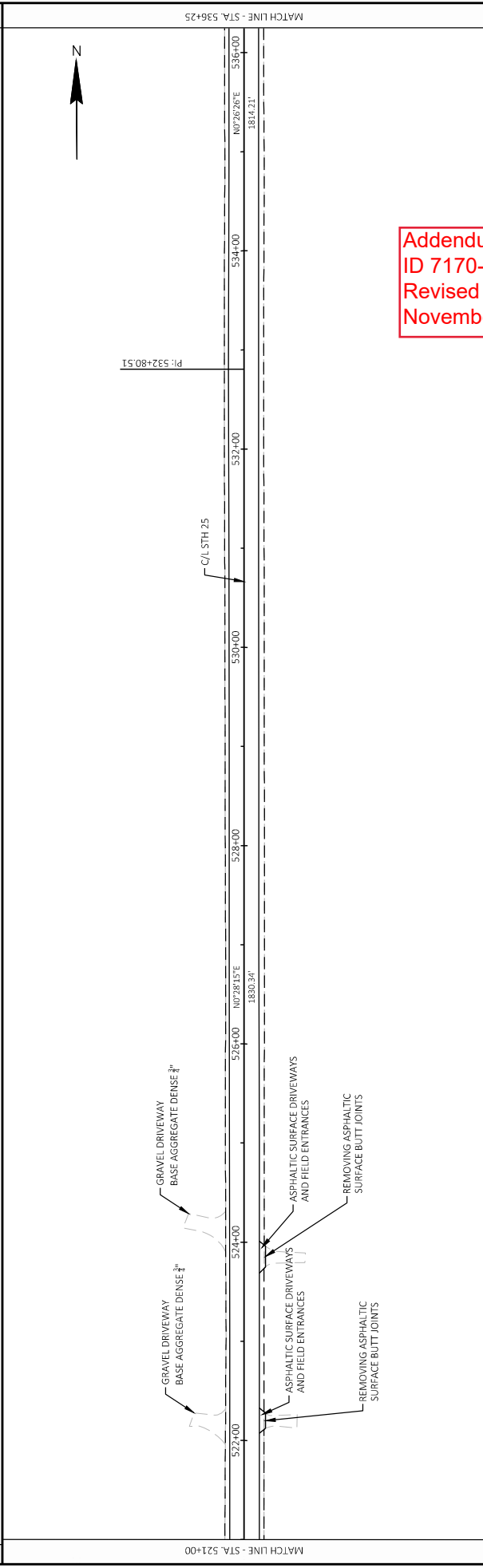
- 1) STATION AND OFF SETS ARE TO THE CENTER OF STRUCTURE.

Addendum No. 01  
ID 7170-00-76  
Revised Sheet 46A  
November 6, 2023

CATEGORY	STATION	LOCATION	520.8000	520.8700	522.2319	522.2619	524.0148	520.0060.04	REMARKS
0010	221+68	STH 25	-	1	-	-	-	-	
0010	240+36	STH 25	-	1	-	-	-	-	
0010	285+22	STH 25	-	1	-	-	-	-	
0010	296+17	STH 25	-	1	-	-	-	-	
0010	306+73	STH 25	-	1	-	-	-	-	
0010	350+20	STH 25	-	1	-	-	-	-	
0010	357+24	STH 25	-	1	-	-	-	-	
0010	376+34	STH 25	-	1	-	-	-	-	
0010	376+38	STH 25	-	1	-	-	-	-	
0010	388+66	STH 25	-	1	-	-	-	-	
0010	388+69	STH 25	-	1	-	-	-	-	
0010	398+65	STH 25	-	1	-	-	-	-	
0010	398+69	STH 25	-	1	-	-	-	-	
0010	408+58	STH 25	-	1	-	-	-	-	
0010	424+27	STH 25	-	1	-	-	-	-	
0010	438+60	STH 25	-	1	-	-	-	-	
0010	469+94	STH 25	-	1	-	-	-	-	
0010	482+20	STH 25	-	1	-	-	-	-	
0010	482+20	STH 25	-	1	-	-	-	-	
0010	512+33	STH 25 LT	-	-	-	-	7	1	REATTACH PIPE
0010	560+33	STH 25 LT	-	-	-	-	10	1	REATTACH PIPE
0010	560+33	STH 25 LT	1	10	10	10	-	1	CONNECT TO EXISTING PIPE
0010	589+35	STH 25	-	1	-	-	-	-	
0010	730+14	STH 25	-	1	-	-	-	-	
0010	739+04	STH 25	-	1	-	-	-	-	
0010	739+15	STH 25	-	1	-	-	-	-	
0010	746+59	STH 25	-	1	-	-	-	-	
0010	820+53	STH 25	-	1	-	-	-	-	
0010	886+65	STH 25	-	1	-	-	-	-	
TOTAL 0010			1	27	10	10	17	3	



5

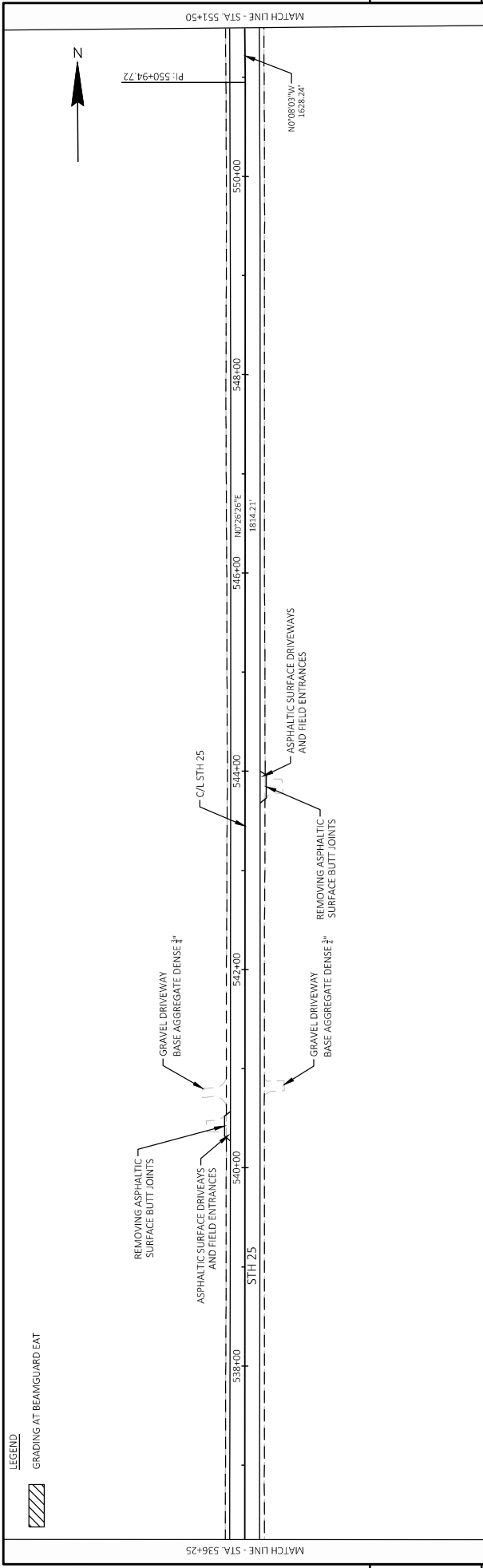


5

Addendum No. 01  
 ID 7170-00-76  
 Revised Sheet 65  
 November 6, 2023

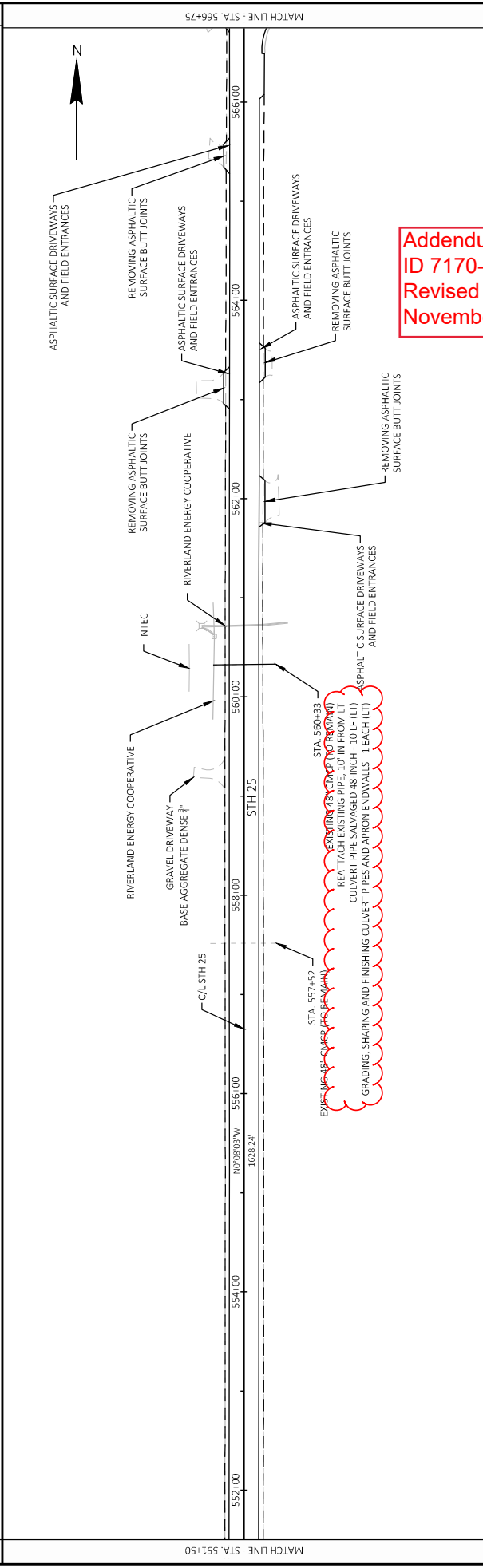
PROJECT NO: 7170-00-76	COUNTY: BUFFALO	PLAN: BUFFALO COUNTY	SHEET 65	E
FILE NAME: W:\71700076\CD\SHSHEETS\PLAN\050102-P\LDWG LAYOUT NAME - 050111-1P	PLOT DATE: 11/7/2023 5:01 PM	PLOT BY: CORDINA WOYCHK	FT	W6507\CD05 SHEET 44
HWY: STH 25	COUNTY: BUFFALO	PLAN: BUFFALO COUNTY	SHEET 65	E

**LEGEND**  
 GRADING AT BEAMGUARD EAT



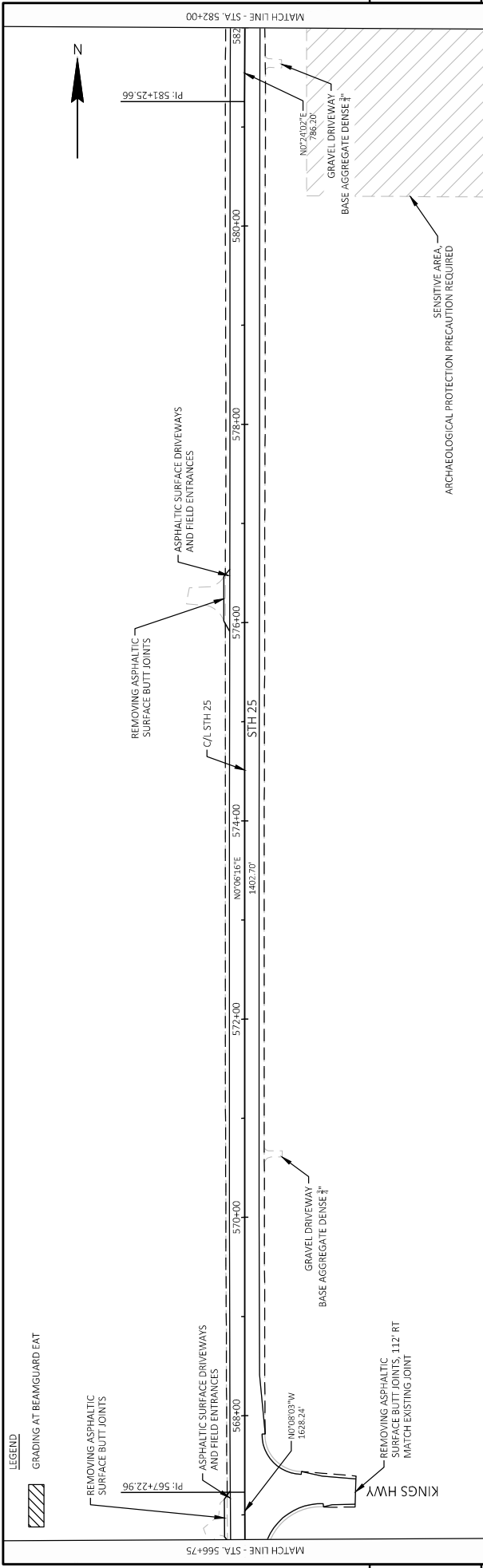
5

5

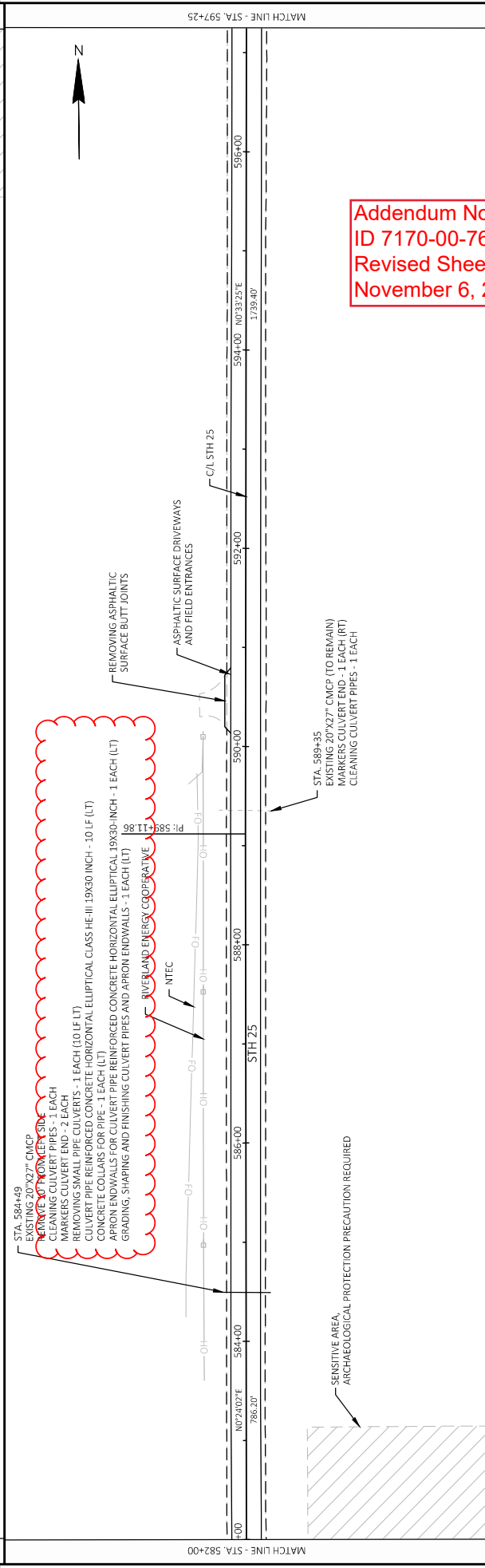


Addendum No. 01  
 ID 7170-00-76  
 Revised Sheet 66  
 November 6, 2023

<b>PROJECT NO:</b> 7170-00-76	<b>HWY:</b> STH 25	<b>COUNTY:</b> BUFFALO	<b>PLAN - BUFFALO COUNTY</b>
<small>FILE NAME: W:\71700076\CD\SHSHEEPS\PLAN\050102-P\LDWG LAYOUT NAME - 050102-01</small>	<small>PLOT DATE: 11/7/2023 5:01 PM</small>	<small>PLOT BY: CORDIA WOYCHK</small>	<small>PLOT NAME: WIS007C005 SHEET 44</small>
<b>SHEET 66</b>		<b>E</b>	



5



5

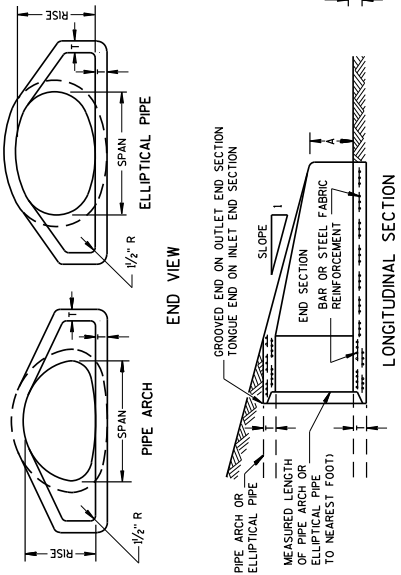
Addendum No. 01  
 ID 7170-00-76  
 Revised Sheet 67  
 November 6, 2023

STA. 584+49  
 EXISTING 20"X27" CMCP  
 MARKERS CULVERT END - 1 EACH  
 REMOVING ASPHALTIC SURFACE BUTT JOINTS - 1 EACH  
 REMOVING SMALL PIPE CULVERTS - 1 EACH (10 LF LT)  
 CULVERT PIPE REINFORCED CONCRETE HORIZONTAL ELLIPTICAL 19X30 INCH - 10 LF (LT)  
 CONCRETE COLLARS FOR PIPE - 1 EACH (LT)  
 APRON ENDWALLS FOR CULVERT PIPE REINFORCED CONCRETE HORIZONTAL ELLIPTICAL 19X30-INCH - 1 EACH (LT)  
 GRADING AND FINISHING CULVERT PIPES AND APRON ENDWALLS - 1 EACH (LT)  
 RIVERLAND ENERGY COOPERATIVE

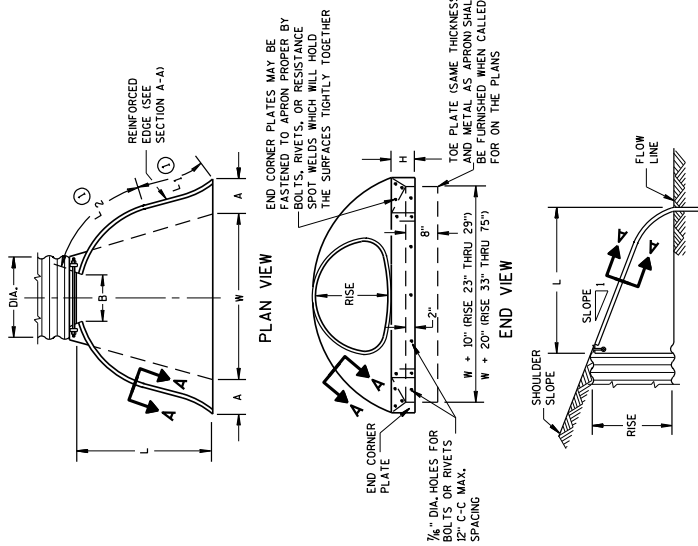
PROJECT NO: 7170-00-76	COUNTY: BUFFALO	PLAN - BUFFALO COUNTY	SHEET 67
FILE NAME: W:\717000\6\CD\SHETS\PLAN\050101.PLDWG	FLY BY: HEDI SCHWARZ	PLLOT NAME:	E
LAYOUT NAME: 050113-01	FLLOT DATE: 11/2/2023 10:05 AM	FLLOT NAME:	
	HWY: STH 25		

WIS007CADDSSHEET 44

# SDD 8F2 Apron Endwalls for Pipe Arch and Elliptical Pipe



## CONCRETE ENDWALLS



## METAL ENDWALLS

### 2- 3/4" x 1/2" CORRUGATIONS

EQUIV. DIA. (inches)	SPAN (inches)	RISE (inches)	MIN. THICK. (inches)		DIMENSIONS (inches)								APPROX. SLOPE	
			STEEL	ALUM.	A	B	H	L	L1	L2	W			
15	17	15	.064	.060	7	9	6	19	14	16	30	27/10	11 PC.	3 to 1
18	21	15	.064	.060	7	10	6	23	14	19 1/2	36	27/10	11 PC.	3 to 1
21	24	18	.064	.060	6	10	6	28	18	21 1/2	42	27/10	11 PC.	3 to 1
24	28	20	.064	.060	9	14	6	32	18	27 1/2	60	27/10	11 PC.	3 to 1
30	36	24	.079	.075	10	16	6	39	18	37 1/2	60	27/10	11 PC.	3 to 1
36	42	29	.099	.095	15	18	6	46	24	45 3/4	65	27/10	11 PC.	3 to 1
42	49	35	.109	.105	15	21	9	53	24	54 3/4	65	27/10	11 PC.	3 to 1
48	57	43	.109	.105	18	26	12	63	24	68	90	27/10	11 PC.	3 to 1
54	64	47	.109	.105	18	30	12	70	24	72 3/4	102	27/10	11 PC.	3 to 1
60	71	47	.109	.105	18	33	12	77	30	82 1/4	114	27/10	11 PC.	3 to 1
66	77	52	.109	.105	18	35	12	77	30	82 1/4	114	27/10	11 PC.	3 to 1
72	83	57	.109	.105	18	39	12	77	30	82 1/4	114	27/10	11 PC.	3 to 1

### 3" x 1" CORRUGATIONS

EQUIV. DIA. (inches)	SPAN (inches)	RISE (inches)	MIN. THICK. (inches)		DIMENSIONS (inches)								APPROX. SLOPE	
			STEEL	ALUM.	A	B	H	L	L1	L2	W			
48	53	41	.109	.105	18	26	12	63	24	72 3/4	90	27/10	12 PC.	3 to 1
54	60	46	.109	.105	18	30	12	70	30	82 1/4	102	27/10	12 PC.	3 to 1
60	66	51	.109	.105	18	33	12	77	30	82 1/4	102	27/10	12 PC.	3 to 1
66	72	55	.109	.105	18	36	12	77	30	82 1/4	102	27/10	12 PC.	3 to 1
72	81	59	.109	.105	18	39	12	77	30	82 1/4	102	27/10	12 PC.	3 to 1
78	87	63	.109	.105	18	42	12	77	30	82 1/4	102	27/10	12 PC.	3 to 1
84	95	67	.109	.105	22	38	12	77	30	82 1/4	102	27/10	12 PC.	3 to 1
90	103	71	.109	.105	22	38	12	77	30	82 1/4	102	27/10	12 PC.	3 to 1
96	112	75	.109	.105	24	40	12	77	30	82 1/4	102	27/10	12 PC.	3 to 1

NOTE: ALL SPLICES TO BE LAP RIVETED OR BOLTED. \* EXCEPT CENTER PANEL SEE GENERAL NOTES

### REINFORCED CONCRETE PIPE ARCH

EQUIV. DIA. (inches)	SPAN (inches)	RISE (inches)	DIMENSIONS (inches)								APPROX. SLOPE
			T	A	B	C	D	E			
24	29	18	3	8 1/2	39	33	72	48	3	10	1
30	36	24	3 1/2	9 1/2	50	46	96	60	3	10	1
36	44	27	4	11 1/2	60	56	120	84	3	10	1
42	51	31	4 1/2	15 1/2	60	56	96	84	3	10	1
48	58	36	5	21	60	56	96	84	3	10	1
54	65	40	5 1/2	25 1/2	60	56	96	90	3	10	1
60	73	45	6	31	60	56	96	96	3	10	1
66	80	52	7	31	60	56	96	96	3	10	1
72	88	54	8	28 1/2	83	39	99	120	2	10	1
84	102	62	8	28 1/2	83	39	99	120	2	10	1

### REINFORCED CONCRETE ELLIPTICAL PIPE

EQUIV. DIA. (inches)	SPAN (inches)	RISE (inches)	DIMENSIONS (inches)								APPROX. SLOPE
			T	A	B	C	D	E			
24	30	18	3 1/4	8 1/2	39	33	72	48	3	10	1
30	36	24	3 1/2	9 1/2	54	18	72	60	3	10	1
36	42	29	4 1/2	11 1/2	60	24	84	72	2 1/2	10	1
42	48	34	5	15 1/4	60	36	96	78	2 1/2	10	1
48	54	38	5 1/2	21	60	36	96	84	2 1/2	10	1
54	60	43	6	25 1/2	60	36	96	90	2 1/2	10	1
60	66	48	6 1/2	30	60	36	96	96	2 1/2	10	1

\*\*NOMINAL SIZE

## GENERAL NOTES

DETAILS OF CONSTRUCTION, MATERIALS AND WORKMANSHIP NOT SHOWN ON THIS DRAWING SHALL CONFORM TO THE PERTINENT REQUIREMENTS OF THE STANDARD SPECIFICATIONS AND THE APPLICABLE SPECIAL PROVISIONS.

CONCRETE APRON ENDWALLS MAY NOT BE USED WITH GALVANIZED STEEL OR PIPE ARCHES. APRON ENDWALLS SHALL BE INSTALLED ON GULCH PIPE OF THE SAME METAL.

ALL THREE PIECE STEEL APRON ENDWALLS FOR 66" X 51" PIPE ARCH AND LARGER SHALL HAVE 0.109" SIDES AND 0.109" CENTER PANELS. ALL THREE PIECE ALUMINUM APRON ENDWALLS SHALL HAVE 0.109" SIDES AND 0.109" CENTER PANELS. ALL CENTER PANELS SHALL BE GREATER THAN 20 PERCENT OF THE PIPE ARCH PERIMETER.

LAP SEAMS SHALL BE TIGHTLY JOINED BY GALVANIZED RIVETS OR BOLTS FOR STEEL UNITS AND ALUMINUM RIVETS AND BOLTS FOR ALUMINUM UNITS. REINFORCED EDGES AND CENTER PANEL SEAMS SHALL BE FURTHER REINFORCED WITH GALVANIZED STEEL OR ALUMINUM STIFFENER ANGLES. THE ANGLES SHALL BE ATTACHED BY GALVANIZED NUTS AND BOLTS FOR STEEL UNITS AND ALUMINUM NUTS AND BOLTS FOR ALUMINUM UNITS.

WHERE TWO OR MORE PIPES WITH APRON ENDWALLS ARE LAID ADJACENT TO EACH OTHER, THEY SHALL BE SEPARATED BY A DISTANCE SUFFICIENT TO PROVIDE A MINIMUM CLEARANCE OF 6 INCHES BETWEEN APRON ENDWALLS.

FOR PIPE ARCH SIZES UP TO 73" X 55" A 180° ROLLED EDGE MAY BE USED INSTEAD OF STEEL ROD REINFORCEMENT. SEE SECTION A-A.

Addendum No. 01  
ID 7170-00-76  
Revised Sheet 88A  
November 6, 2023

## APRON ENDWALLS FOR PIPE ARCH AND ELLIPTICAL PIPE

STATE OF WISCONSIN  
DEPARTMENT OF TRANSPORTATION

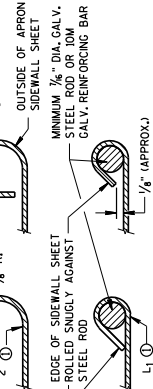
APPROVED: DATE: 11-30-24  
/s/ Rg 88A  
CHIEF ROAD ENGINEER  
P.M.A.



## CONNECTION DETAILS

NOTE: DIMPLED BAND FITS OVER OUTSIDE OF ENDWALL, AND CORRUGATED BAND FITS INSIDE ENDWALL.

## SECTION A-A



## SIDE ELEVATION







Proposal Schedule of Items

Proposal ID: 20231114037 Project(s): 7170-00-76

Federal ID(s): WISC 2024038

SECTION: 0001 Contract Items

Alt Set ID: Alt Mbr ID:

Proposal Line Number	Item ID Description	Approximate Quantity and Units	Unit Price	Bid Amount
0002	201.0205 Grubbing	3.000 STA	_____.	_____.
0004	203.0100 Removing Small Pipe Culverts	11.000 EACH	_____.	_____.
0006	203.0220 Removing Structure (structure) 01. 60-Inch Culvert	2.000 EACH	_____.	_____.
0008	204.0110 Removing Asphaltic Surface	113.000 SY	_____.	_____.
0010	204.0115 Removing Asphaltic Surface Butt Joints	8,717.000 SY	_____.	_____.
0012	204.0120 Removing Asphaltic Surface Milling	252,400.000 SY	_____.	_____.
0014	204.0165 Removing Guardrail	4,814.000 LF	_____.	_____.
0016	204.0185 Removing Masonry	20.000 CY	_____.	_____.
0018	204.0220 Removing Inlets	1.000 EACH	_____.	_____.
0020	205.0100 Excavation Common	2,373.000 CY	_____.	_____.
0022	206.5001 Cofferdams (structure) 01. C-46-3	1.000 EACH	_____.	_____.
0024	208.1500.S Temporary Lane Shift During Culvert Work	12.000 EACH	_____.	_____.
0026	211.0101 Prepare Foundation for Asphaltic Paving (project) 01. 7170-00-76	1.000 EACH	_____.	_____.
0028	211.0400 Prepare Foundation for Asphaltic Shoulders	28.000 STA	_____.	_____.
0030	213.0100 Finishing Roadway (project) 01. 7170-00-76	1.000 EACH	_____.	_____.



Proposal Schedule of Items

Proposal ID: 20231114037 Project(s): 7170-00-76

Federal ID(s): WISC 2024038

SECTION: 0001 Contract Items

Alt Set ID: Alt Mbr ID:

Proposal Line Number	Item ID Description	Approximate Quantity and Units	Unit Price	Bid Amount
0032	305.0110 Base Aggregate Dense 3/4-Inch	723.000 TON	_____.	_____.
0034	305.0120 Base Aggregate Dense 1 1/4-Inch	2,480.000 TON	_____.	_____.
0036	450.4000 HMA Cold Weather Paving	13,871.000 TON	_____.	_____.
0038	455.0605 Tack Coat	35,330.000 GAL	_____.	_____.
0040	460.0105.S HMA Percent Within Limits (PWL) Test Strip Volumetrics	1.000 EACH	_____.	_____.
0042	460.0110.S HMA Percent Within Limits (PWL) Test Strip Density	2.000 EACH	_____.	_____.
0044	460.2005 Incentive Density PWL HMA Pavement	40,100.000 DOL	1.00000	40,100.00
0046	460.2007 Incentive Density HMA Pavement Longitudinal Joints	28,270.000 DOL	1.00000	28,270.00
0048	460.2010 Incentive Air Voids HMA Pavement	55,480.000 DOL	1.00000	55,480.00
0050	460.6644 HMA Pavement 4 MT 58-34 V	55,480.000 TON	_____.	_____.
0052	460.9000.S Material Transfer Vehicle 01. 7170-00-76	1.000 EACH	_____.	_____.
0054	465.0105 Asphaltic Surface	103.000 TON	_____.	_____.
0056	465.0110 Asphaltic Surface Patching	300.000 TON	_____.	_____.
0058	465.0120 Asphaltic Surface Driveways and Field Entrances	1,382.000 TON	_____.	_____.
0060	465.0310 Asphaltic Curb	2,646.000 LF	_____.	_____.



Proposal Schedule of Items

Proposal ID: 20231114037 Project(s): 7170-00-76

Federal ID(s): WISC 2024038

SECTION: 0001 Contract Items

Alt Set ID: Alt Mbr ID:

Proposal Line Number	Item ID Description	Approximate Quantity and Units	Unit Price	Bid Amount
0062	465.0315 Asphaltic Flumes	54.000 SY	_____.	_____.
0064	465.0520 Asphaltic Rumble Strips, Shoulder	22,512.000 LF	_____.	_____.
0066	465.0560 Asphaltic Rumble Strips, Centerline	70,651.000 LF	_____.	_____.
0068	509.1500 Concrete Surface Repair	75.000 SF	_____.	_____.
0070	520.1024 Apron Endwalls for Culvert Pipe 24-Inch	14.000 EACH	_____.	_____.
0072	520.1036 Apron Endwalls for Culvert Pipe 36-Inch	2.000 EACH	_____.	_____.
0074	520.8700 Cleaning Culvert Pipes	27.000 EACH	_____.	_____.
0076	522.0424 Culvert Pipe Reinforced Concrete Class IV 24-Inch	285.000 LF	_____.	_____.
0078	522.0436 Culvert Pipe Reinforced Concrete Class IV 36-Inch	129.000 LF	_____.	_____.
0080	522.0460 Culvert Pipe Reinforced Concrete Class IV 60-Inch	92.000 LF	_____.	_____.
0082	522.1060 Apron Endwalls for Culvert Pipe Reinforced Concrete 60-Inch	4.000 EACH	_____.	_____.
0084	606.0200 Riprap Medium	39.000 CY	_____.	_____.
0086	611.0642 Inlet Covers Type MS	4.000 EACH	_____.	_____.
0088	611.3902 Inlets Median 2 Grate	2.000 EACH	_____.	_____.
0090	614.0010 Barrier System Grading Shaping Finishing	17.000 EACH	_____.	_____.



Proposal Schedule of Items

Proposal ID: 20231114037 Project(s): 7170-00-76

Federal ID(s): WISC 2024038

SECTION: 0001 Contract Items

Alt Set ID: Alt Mbr ID:

Proposal Line Number	Item ID Description	Approximate Quantity and Units	Unit Price	Bid Amount
0092	614.0305 Steel Plate Beam Guard Class A	300.000 LF	_____.	_____.
0094	614.0345 Steel Plate Beam Guard Short Radius	276.000 LF	_____.	_____.
0096	614.0370 Steel Plate Beam Guard Energy Absorbing Terminal	7.000 EACH	_____.	_____.
0098	614.0390 Steel Plate Beam Guard Short Radius Terminal	3.000 EACH	_____.	_____.
0100	614.0400 Adjusting Steel Plate Beam Guard	7,039.000 LF	_____.	_____.
0102	614.0515 Guardrail Stiffened LHW	4,106.000 LF	_____.	_____.
0104	614.0950 Replacing Guardrail Posts and Blocks	14.000 EACH	_____.	_____.
0106	614.2300 MGS Guardrail 3	100.000 LF	_____.	_____.
0108	614.2330 MGS Guardrail 3 K	3,298.000 LF	_____.	_____.
0110	614.2350 MGS Guardrail Short Radius	107.000 LF	_____.	_____.
0112	614.2610 MGS Guardrail Terminal EAT	6.000 EACH	_____.	_____.
0114	614.2630 MGS Guardrail Short Radius Terminal	2.000 EACH	_____.	_____.
0116	618.0100 Maintenance and Repair of Haul Roads (project) 01. 7170-00-76	1.000 EACH	_____.	_____.
0118	619.1000 Mobilization	1.000 EACH	_____.	_____.
0120	624.0100 Water	25.000 MGAL	_____.	_____.



Proposal Schedule of Items

Proposal ID: 20231114037 Project(s): 7170-00-76

Federal ID(s): WISC 2024038

SECTION: 0001 Contract Items

Alt Set ID: Alt Mbr ID:

Proposal Line Number	Item ID Description	Approximate Quantity and Units	Unit Price	Bid Amount
0122	625.0500 Salvaged Topsoil	3,750.000 SY	_____.	_____.
0124	628.1504 Silt Fence	3,375.000 LF	_____.	_____.
0126	628.1520 Silt Fence Maintenance	6,745.000 LF	_____.	_____.
0128	628.1905 Mobilizations Erosion Control	3.000 EACH	_____.	_____.
0130	628.1910 Mobilizations Emergency Erosion Control	3.000 EACH	_____.	_____.
0132	628.2006 Erosion Mat Urban Class I Type A	3,750.000 SY	_____.	_____.
0134	628.7005 Inlet Protection Type A	2.000 EACH	_____.	_____.
0136	628.7504 Temporary Ditch Checks	310.000 LF	_____.	_____.
0138	628.7555 Culvert Pipe Checks	273.000 EACH	_____.	_____.
0140	629.0210 Fertilizer Type B	2.900 CWT	_____.	_____.
0142	630.0120 Seeding Mixture No. 20	100.000 LB	_____.	_____.
0144	630.0175 Seeding Mixture No. 75	2.000 LB	_____.	_____.
0146	630.0400 Seeding Nurse Crop	2.000 LB	_____.	_____.
0148	630.0500 Seed Water	104.200 MGAL	_____.	_____.
0150	633.5200 Markers Culvert End	51.000 EACH	_____.	_____.
0152	642.5001 Field Office Type B	1.000 EACH	_____.	_____.



Proposal Schedule of Items

Proposal ID: 20231114037 Project(s): 7170-00-76

Federal ID(s): WISC 2024038

SECTION: 0001 Contract Items

Alt Set ID: Alt Mbr ID:

Proposal Line Number	Item ID Description	Approximate Quantity and Units	Unit Price	Bid Amount
0154	643.0300 Traffic Control Drums	330.000 DAY	_____.	_____.
0156	643.0410 Traffic Control Barricades Type II	12.000 DAY	_____.	_____.
0158	643.0900 Traffic Control Signs	3,241.000 DAY	_____.	_____.
0160	643.1050 Traffic Control Signs PCMS	14.000 DAY	_____.	_____.
0162	643.3165 Temporary Marking Line Paint 6-Inch	139,692.000 LF	_____.	_____.
0164	643.5000 Traffic Control	1.000 EACH	_____.	_____.
0166	645.0130 Geotextile Type R	156.000 SY	_____.	_____.
0168	646.2040 Marking Line Grooved Wet Ref Epoxy 6-Inch	218,472.000 LF	_____.	_____.
0170	646.4040 Marking Line Grooved Wet Ref Epoxy 10-Inch	501.000 LF	_____.	_____.
0172	646.6120 Marking Stop Line Epoxy 18-Inch	34.000 LF	_____.	_____.
0174	646.7120 Marking Diagonal Epoxy 12-Inch	30.000 LF	_____.	_____.
0176	650.6000 Construction Staking Pipe Culverts	13.000 EACH	_____.	_____.
0178	650.8000 Construction Staking Resurfacing Reference	71,600.000 LF	_____.	_____.
0180	650.9911 Construction Staking Supplemental Control (project) 01. 7170-00-76	1.000 EACH	_____.	_____.
0182	650.9920 Construction Staking Slope Stakes	5,050.000 LF	_____.	_____.



Proposal Schedule of Items

Proposal ID: 20231114037 Project(s): 7170-00-76

Federal ID(s): WISC 2024038

SECTION: 0001 Contract Items

Alt Set ID: Alt Mbr ID:

Proposal Line Number	Item ID Description	Approximate Quantity and Units	Unit Price	Bid Amount
0184	690.0150 Sawing Asphalt	1,291.000 LF	_____	_____
0186	740.0440 Incentive IRI Ride	53,520.000 DOL	1.00000	53,520.00
0188	ASP.1T0A On-the-Job Training Apprentice at \$5.00/ HR	2,400.000 HRS	5.00000	12,000.00
0190	ASP.1T0G On-the-Job Training Graduate at \$5.00/ HR	1,380.000 HRS	5.00000	6,900.00
0192	SPV.0060 Special 01. Cleaning Ditch	12.000 EACH	_____	_____
0194	SPV.0060 Special 02. Replacing Guardrail Posts and Blocks - EAT	26.000 EACH	_____	_____
0196	SPV.0060 Special 03. Steel Plate Beam Guard Connection	1.000 EACH	_____	_____
0198	SPV.0090 Special 01. Polyurethane Foam Crack or Joint Filling	23.000 LF	_____	_____
0200	SPV.0165 Special 01. Concrete Surface Repair Full-Depth	55.000 SF	_____	_____
0202	520.8000 Concrete Collars for Pipe	1.000 EACH	_____	_____
0204	522.2319 Culvert Pipe Reinforced Concrete Horizontal Elliptical Class HE-III 19x30- Inch	10.000 LF	_____	_____
0206	522.2619 Apron Endwalls for Culvert Pipe Reinforced Concrete Horizontal Elliptical 19x30-Inch	1.000 EACH	_____	_____
0208	524.0148 Culvert Pipe Salvaged 48-Inch	17.000 LF	_____	_____



Proposal Schedule of Items

Proposal ID: 20231114037 Project(s): 7170-00-76

Federal ID(s): WISC 2024038

SECTION: 0001 Contract Items

Alt Set ID: Alt Mbr ID:

Proposal Line Number	Item ID Description	Approximate Quantity and Units	Unit Price	Bid Amount
0210	SPV.0060 Special 04. Grading, Shaping, and Finishing Culvert Pipes and Apron Endwalls	3.000 EACH	_____.	_____.
		<b>Section: 0001</b>	<b>Total:</b>	_____.
			<b>Total Bid:</b>	_____.